

Product datasheet for **RG227487**

SOX6 (NM_001145819) Human Tagged ORF Clone

Product data:

Product Type:	Expression Plasmids
Product Name:	SOX6 (NM_001145819) Human Tagged ORF Clone
Tag:	TurboGFP
Symbol:	SOX6
Synonyms:	HSSOX6; SOXD; TOLCAS
Mammalian Cell Selection:	Neomycin
Vector:	pCMV6-AC-GFP (PS100010)
E. coli Selection:	Ampicillin (100 ug/mL)



[View online »](#)

ORF Nucleotide Sequence:

>RG227487 representing NM_001145819
 Red=Cloning site Blue=ORF Green=Tags(s)

TTTTGTAATACGACTCACTATAGGGCGGCCGGGAATTCGTCGACTGGATCCGGTACCGAGGAGATCTGCC
 GCC**CGCATCGCC**

ATGTCTTCCAAGCAAGCCACCTCTCCATTTGCCTGTGCAGCTGATGGAGAGGATGCAATGACCCAGGATT
 TAACCTCAAGGGAAAAGGAAGAGGGCAGTGATCAACATGTGGCCTCCCATCTGCCTCTGCACCCATAAT
 GCACAACAAACCTCACTCTGAGGAGCTACCAACACTTGTCACTACCATTCAACAAGATGCTGACTGGGAC
 AGCGTTTCTGTCATCTCAGCAAAGAATGGAATCAGAGAATAATAAGTTATGTTCCCTATATTCCTCCGAA
 ATACCTCTACCTCACCACATAAGCCTGACGAAGGGAGTCGGGACCGTGAGATAATGACCAGTGTTACTTT
 TGGAAACCCAGAGCGCCGAAAGGGAGTCTTCCCGATGTGGTGGACACTGAAACAGAAGAAGCTTGAG
 GAAATGACTCGGACTGAACAAGAGGATTCCTCCTGCATGGAAAACTACTTTCAAAGATTGGAAGGAAA
 AAATGGAAAGACTAAATACCAGTGAACCTCTTGGAGAAATTAAGGTACACCTGAGAGCCTGGCAGAAAA
 AGAACGGCAGCTCTCCACATGATTACCCAGCTGATCAGTTTACGGGAGCAGCTACTGGCAGCGCATGAT
 GAACAGAAAAAATGGCAGCGTCACAAATTGAGAAACAACGGCAGCAAAATGGACCTTGCTCGCCAACAGC
 AAGAACAGATTGCGAGACAACAGCAGCAACTTCTGCAACAGCAGCACAAAATTAATCTCCTGCGACAAACA
 GATCCAGGTTCCAGGTCACATGCCTCCGCTCATGATCCCAATTTTTCCACATGACCAGCGGACCCTGGCA
 GCAGCTGCTGCTGCCAACAGGGATTCTCTTCCCCCTGGAAATAACATACAAACCAGGTGATAACTACC
 CCGTACAGTTCATTCCATCAACAATGGCAGCTGCTGCTGCTTCTGGACTCAGCCCTTTACAGCTCCAGAA
 GGGTCACTGCTCCACCCACAAATTAACCAAAGGCTAAAGGGCCTAAGTGACCGTTTTGGCAGGAATTTG
 GACACCTTTGAACATGGTGGTGGCCACTTTACAACCAACAGATTGAGCAGCTCTATGCCGCTCAGC
 TGGCCAGCATGCAGGTGCACCTGGAGCAAAGATGCCATCAACTCCACAGCCACCAACACAGCAGGGGAA
 GGTTCTCACCTACTGGGATAAAAAATGAAAAGAGAGGGACCAGCCCTGTAACCTCAAGTTAAGGATGAAGCA
 GCAGCACAGCCTCTGAATCTCTCATCCCGACCCAAGACAGCAGAGCCTGTAAAGTCCCAACGTCTCCCA
 CCCAGAACCTTCTCCAGCCAGCAAAACCAGCCCTGTCAATCTGCCAAACAAAAGCAGCATCCCTAGCCC
 CATTGGAGGAAGCCTGGGAAGAGGATCTCTTTAGATATCCTATCTAGTCTCAACTCCCCTGCCCTTTTT
 GGGGATCAGGATACAGTGATGAAAGCCATTGAGGAGCGCGGAAGATGCGAGAGCAGATCCAGCGGGAGC
 AACAGCAGCAACAGCCACATGGTGTGACGGGAACTGTCCTCCATAAATAATATGGGGCTGAACAGCTG
 CAGGAATGAAAAGGAAAGAACCGCCTTTGAGAATTTGGGGCCCCAGTTAACGGGAAAGTCAATGAAGAT
 GAAAAACTGGGCCAGGTGTCATCGACCTTACTCGGCCAGAAGATGCAGAGGGAAGTAAAGCAATGAATG
 GCTCTGCAGCTAAACTACAGCAGTATTATTGTTGGCCAACAGGAGGTGCCACTGTGGCTGAAGCAGCAGT
 CTACAGGGACGCCCGCGCCGTGCCAGCAGCGAGCCACACATTAAGCGACCAATGAATGCATTATGGTT
 TGGGCAAGGATGAGAGGAGAAAAATCCTTCAGGCCTTCCCCGACATGCATAACTCCAACATTAGCAAAA
 TCTTAGGATCTCGCTGGAAATCAATGTCCAACCAGGAGAAGCAACCTTATTATGAAGAGCAGGCCCGGCT
 AAGCAAGATCCACTTAGAGAAGTACCAAACTATAAATACAAACCCCGACCGAAACGCACCTGCATTGTT
 GATGGCAAAAAGCTTCGGATTGGGGAGTAAAGCAACTGATGAGGTCTCGGAGACAGGAGATGAGGCAGT
 TCTTTACTGTGGGGCAACAGCCTCAGATTCCAATCACCACAGGAACAGGTGTTGTGTATCCTGGTGTAT
 CACTATGGCAACTACCACACCATCGCCTCAGATGACATCTGACTGCTCTAGCACCTCGGCCAGCCCGGAG
 CCCAGCCTCCCGGTATCCAGAGCACTTATGGTATGAAGACAGATGGCGGAAGCCTAGCTGGAAATGAAA
 TGATCAATGGAGAGGATGAAATGAAATGTATGATGACTATGAAGATGACCCCAATCAGACTATAGCAG
 TGAATGAAGCCCGGAGGCTGTCAGTGCCAAC

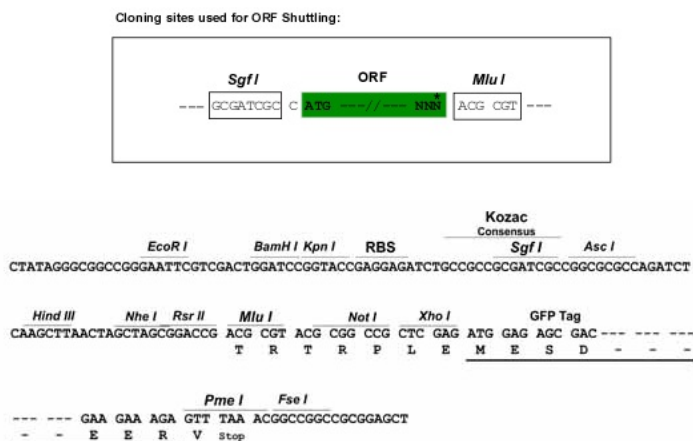
ACGGTACGCGGCCGCTCGAG - GFP Tag - GTTTAA

Protein Sequence: >RG227487 representing NM_001145819
 Red=Cloning site Green=Tags(s)

```
MSSKQATSPFACAADGEDAMTQDLTSREKEEGSDQHVASHLPLHPIMHNKPHSEELPTLVSTIQDADWD
SVLSSQQRMESENKLCSLYSFRNTSTSPHKPDEGSRDREIMTSVTFGTPERRKGLADVVDTLKQKKLE
EMTRTEQEDSSCKEKLKSKDWKEKMERLNTSELLGEIKGTPESLAEKERQLSTMITQLISLREQLLAHD
EQKKLAASQIEKQRQQMDLARQQEQEIARQQQLLQQQHKINLLQQQIQVQGHMPPLMIPIFPHDQRTLA
AAAAAQGGFLFPPGITYKPGDNYPVQFIPSTMAAAAASGLSPLQLQKGHVSHPQINQRLKGLSDRFGRNL
DTFEHGGGHSYNHKQIEQLYAAQLASMQVSPGAKMPSTPQPNTAGTVSPTGIKNEKRGTSPTVQVDEA
AAQPLNLSSRPKTAEPVKSPSTQNLFPASKTSPVNLPNKSSIPSPIGGSLGRGSSLDILSSLNSPALF
GDQDVTMKAIQEARKMREIQREQQQQPHGVDGKLSSINNMGLNSCRNEKERTRFENLGPQLTGKSNED
GKLGPGVIDLTRPEDAEGSKAMNGSAAKLQYYCWPTGGATVAEARVYRDARGRASSEPHIKRPMNAFMV
WAKDERRKILQAFDPMHNSNISILGSRWKSMSNQEKQPYEEQARLSKIHLEKYPNYKYKPRPKRTCIV
DGKCLRIGEYKQLMRSRRQEMRQFFTVGQQPQIPITTTGTGVVYPGAIMATTTTSPQMTSDCSSTSASPE
PSLPVIQSTYGMKTDGGSAGNEMINGEDEMEMYDDYEDDPKSDYSSENEAPEAVSAN
```

TRTRPLE - GFP Tag - V

Restriction Sites: Sgfl-Mlul

Cloning Scheme:


ACCN: NM_001145819

ORF Size: 2523 bp

OTI Disclaimer: The molecular sequence of this clone aligns with the gene accession number as a point of reference only. However, individual transcript sequences of the same gene can differ through naturally occurring variations (e.g. polymorphisms), each with its own valid existence. This clone is substantially in agreement with the reference, but a complete review of all prevailing variants is recommended prior to use. [More info](#)

OTI Annotation: This clone was engineered to express the complete ORF with an expression tag. Expression varies depending on the nature of the gene.

Components: The ORF clone is ion-exchange column purified and shipped in a 2D barcoded Matrix tube containing 10ug of transfection-ready, dried plasmid DNA (reconstitute with 100 ul of water).

Reconstitution Method:

1. Centrifuge at 5,000xg for 5min.
2. Carefully open the tube and add 100ul of sterile water to dissolve the DNA.
3. Close the tube and incubate for 10 minutes at room temperature.
4. Briefly vortex the tube and then do a quick spin (less than 5000xg) to concentrate the liquid at the bottom.
5. Store the suspended plasmid at -20°C. The DNA is stable for at least one year from date of shipping when stored at -20°C.

RefSeq: [NM_001145819.1](#), [NP_001139291.1](#)

RefSeq Size: 8919 bp

RefSeq ORF: 2487 bp

Locus ID: 55553

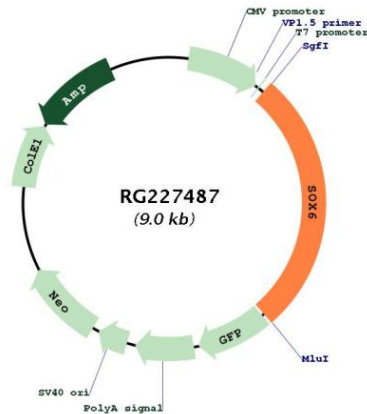
UniProt ID: [P35712](#)

Cytogenetics: 11p15.2

Protein Families: Transcription Factors

Gene Summary: This gene encodes a member of the D subfamily of sex determining region y-related transcription factors that are characterized by a conserved DNA-binding domain termed the high mobility group box and by their ability to bind the minor groove of DNA. The encoded protein is a transcriptional activator that is required for normal development of the central nervous system, chondrogenesis and maintenance of cardiac and skeletal muscle cells. The encoded protein interacts with other family members to cooperatively activate gene expression. Alternative splicing results in multiple transcript variants.[provided by RefSeq, Mar 2009]

Product images:



Circular map for RG227487