

Product datasheet for **RG227472**

STRA6 (NM_001142618) Human Tagged ORF Clone

Product data:

Product Type:	Expression Plasmids
Product Name:	STRA6 (NM_001142618) Human Tagged ORF Clone
Tag:	TurboGFP
Symbol:	STRA6
Synonyms:	MCOPCB8; MCOPS9; PP14296
Mammalian Cell Selection:	Neomycin
Vector:	pCMV6-AC-GFP (PS100010)
E. coli Selection:	Ampicillin (100 ug/mL)



[View online »](#)

ORF Nucleotide
Sequence:

>RG227472 representing NM_001142618
Red=Cloning site Blue=ORF Green=Tags(s)

TTTTGTAATACGACTCACTATAGGGCGGCCGGGAATTCGTCGACTGGATCCGGTACCGAGGAGATCTGCC
GCCGCGATCGCC

ATGTCGTCCCAGCCAGCAGGGAACCCAGACCTCCCCGGGGCCACAGAGGACTACTCCTATGGCAGCTGGT
ACATCGATGAGCCCCAGGGGGCGAGGAGCTCCAGCCAGAGGGGAAGTGCCCTCCTGCCACACCAGCAT
ACCACCCGGCCTGTACCACGCCTGCCTGGCCTCGCTGTCAATCCTTGTGTGCTGCTCCTGGCCATGCTG
GTGAGGCGCCGCCAGCTCTGGCCTGACTGTGTGCGTGGCAGGCCCGCCTGCCAGCCCTGTGGATTCT
TGGCTGGGACAGGCCCGGGCAGTGCCTGCTGCTGTTTTCATGGTCTCCTGAGCTCCCTGTGTTTGT
GCTCCCCGACGAGGACGCATTGCCCTTCTGACTCTCGCCTCAGCACCCAGCCAAGATGGGAAAAGTGA
GCTCCAAGAGGGGCTGGAAGATACTGGGACTGTTCTATTATGCTGCCCTCTACTACCCTCTGGTGCCT
GTGCCACGGCTGGCCACACAGCTGCACACCTGCTGGCAGCACGCTGTCTGGGCCACCTTGGGGTCCA
GGTCTGGCAGAGGGCAGAGTGTCCCAGGTGCCAAGATCTACAAGTACTACTCCCTGCTGGCCTCCCTG
CCTCTCCTGCTGGCCTCGGATTCTGAGCCTTTGGTACCCTGTGCAGCTGGTGAGAAGCTTCAGCCGTA
GGACAGGAGCAGGCTCCAAGGGGCTGCAGAGCAGCTACTCTGAGGAATATCTGAGGAACCTCCTTTGCAG
GAAGAAGCTGGGAAGCAGCTACCACACCTCCAAGCATGGCTTCTGTCTGGGCCCGCGTCTGCTTGAGA
CACTGCATCTACACTCCACAGCCAGGATTCCATCTCCCGTGAAGCTGGTGTCTTTCAGCTACACTGACAG
GGACGGCCATTTACCAGTGGCCCTGCTGCTGCTGGTGGGCGTGGTACCCACTATCCAGAAGGTGAGGGC
AGGGGTACCACGGATGTCTCTACCTGCTGGCCAGCTTTGGAATCGTGTCTCCGAGGACAAGCAGGAG
GTGGTGGAGCTGGTGAAGCACCATCTGTGGCTCTGGAAGTGTGCTACATCTCAGCCTTGGTCTTGTCT
GCTTACTCACCTTCTGGTCTGATGCGCTCACTGGTGACACACAGGACCAACCTTCGAGCTCTGCACCG
AGGAGCTGCCCTGGACTTGAGTCCCTTGATCGGAGTCCCATCCCTCCCGCCAAGCCATATTCTGTTGG
ATGAGCTTCAGTGCCTACCAGACAGCCTTTATCTGCCTTGGGCTCCTGGTGCAGCAGATCATCTTCTTCC
TGGGAACCACGGCCCTGGCCTTCTGGTGTCTATGCCTGTGCTCCATGGCAGGAACCTCCTGCTCTTCCG
TCCCTGGAGTCTCTGTGGCCCTTCTGGCTGACTTTGGCCCTGGCTGTGATCCTGCAGAACATGGCAGCC
CATTGGGTCTTCTGGAGACTCATGATGGACACCCACAGCTGACCAACCGGCGAGTGTCTATGCAGCCA
CCTTCTTCTCTTCCCCCTCAATGTGCTGGTGGGTGCCATGGTGGCCACCTGGCGAGTGTCTCTCTGC
CCTCTACAACGCCATCCACCTTGGCCAGATGGACCTCAGCCTGCTGCCACCGAGAGCCGCCACTCTCGAC
CCGGGCTACTACAGTACCGAACTTCTTGAAGATTGAAGTCAAGCAGTGCATCCAGCCATGACAGCCT
TCTGCTCCCTGCTCTGCAAGCGCAGAGCTCCTACCCAGGACCATGGCAGCCCCCAGGACAGCCTCAG
ACCAGGGGAGGAAGCAAGGGATGCAGCTGCTACAGACAAGGACTCCATGGCCAAGGGAGCTAGGCCC
GGGGCCAGCCCGGCAGGGCTCGCTGGGGTCTGGCCTACACGCTGCTGCACAACCAACCTGCAGGTCT
TCCGCAAGACGGCCCTGTTGGGTGCCAATGGTGCCAGCCC

ACGCGTACGCGGCCGCTCGAG - GFP Tag - GTTTAA

Protein Sequence: >RG227472 representing NM_001142618
Red=Cloning site Green=Tags(s)

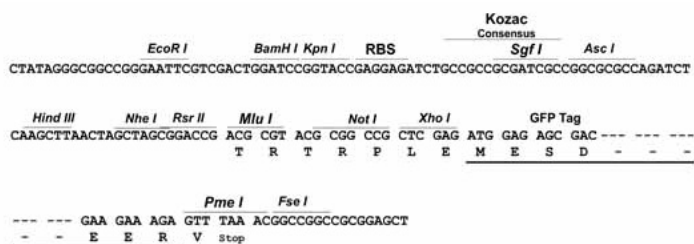
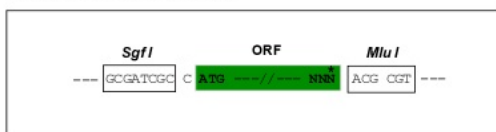
MSSQPAGNQTSPGATEDYSYGSWYIDEPQGGEEELQPEGEVPSCHTSIPPGLYHACLASLSILVLLLLAML
VRRRQLWPDCVRGRPLPSPVDFLAGDRPRAVPAAVFMVLLSSLCLLPDEDALPFLTLASAPSQDGKTE
APRGAWKILGLFYAALYYPLAACATAGHTAAHLLGSTLSWAHLGVQVWQRAECPQVPKIYKYSSLASL
PLLLGLGFLSLWYPVQLVRSFSRRTGAGSKGLQSSYSEYLRNLLCRKKLGSSYHTSKHGFLSWARVCLR
HCIYTPQPGFHLPLKLVLSATLTGTAIYQVALLLLVGVVPTIQKVRAGVTTDVSYLLASFGIVLSEDKQE
VVELVKHHLWALEVCYISALVLSCLLTFVLVLRSLVTHRTNLRALHRGAALDLSPLHRSPHPSRQAIFCW
MSFSAYQTAFICLGLLVQQIIFFLGTALAFVLMPVLHGRNLLFRSLESSWPFWLTALAVILQNMAA
HWVFLETHDGHPLTNRRLVYAATFLLFPLNLVGAMVATWRVLLSALYNAIHLGQMDLSLLPPRAATLD
PGYYTYRNLKIEVSQSHPAMTAFCSLLLQAQSLLPRTMAAPQDSL RPGEEDGMLLQTKDSMAKGARP
GASRGRARWGLAYTLLHNPTLQVFRKTALLGANGAQP

TRTRPLE - GFP Tag - V

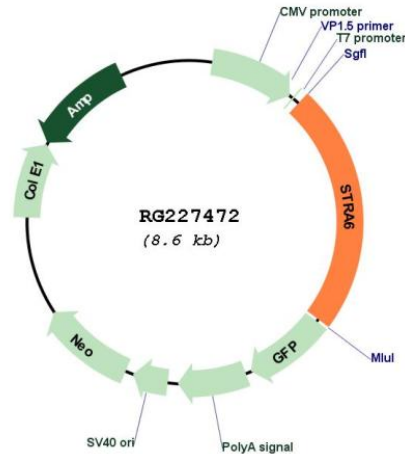
Restriction Sites: SgfI-MluI

Cloning Scheme:

Cloning sites used for ORF Shuttling:



Plasmid Map:



ACCN: NM_001142618

ORF Size: 2001 bp

OTI Disclaimer: The molecular sequence of this clone aligns with the gene accession number as a point of reference only. However, individual transcript sequences of the same gene can differ through naturally occurring variations (e.g. polymorphisms), each with its own valid existence. This clone is substantially in agreement with the reference, but a complete review of all prevailing variants is recommended prior to use. [More info](#)

OTI Annotation: This clone was engineered to express the complete ORF with an expression tag. Expression varies depending on the nature of the gene.

Components: The ORF clone is ion-exchange column purified and shipped in a 2D barcoded Matrix tube containing 10ug of transfection-ready, dried plasmid DNA (reconstitute with 100 ul of water).

Reconstitution Method:

1. Centrifuge at 5,000xg for 5min.
2. Carefully open the tube and add 100ul of sterile water to dissolve the DNA.
3. Close the tube and incubate for 10 minutes at room temperature.
4. Briefly vortex the tube and then do a quick spin (less than 5000xg) to concentrate the liquid at the bottom.
5. Store the suspended plasmid at -20°C. The DNA is stable for at least one year from date of shipping when stored at -20°C.

RefSeq: [NM_001142618.1](#), [NP_001136090.1](#)

RefSeq Size: 2848 bp

RefSeq ORF: 2004 bp

Locus ID: 64220

UniProt ID: [Q9BX79](#)

Cytogenetics: 15q24.1

Protein Families: Transmembrane

Gene Summary: The protein encoded by this gene is a membrane protein involved in the metabolism of retinol. The encoded protein acts as a receptor for retinol/retinol binding protein complexes. This protein removes the retinol from the complex and transports it across the cell membrane. Defects in this gene are a cause of syndromic microphthalmia type 9 (MCOPS9). Several transcript variants encoding a few different isoforms have been found for this gene. [provided by RefSeq, Dec 2008]