

## Product datasheet for **RG227459**

### **TMEM25 (NM\_001144036) Human Tagged ORF Clone**

#### Product data:

Product Type: Expression Plasmids  
Product Name: TMEM25 (NM\_001144036) Human Tagged ORF Clone  
Tag: TurboGFP  
Symbol: TMEM25  
Mammalian Cell Selection: Neomycin  
Vector: pCMV6-AC-GFP (PS100010)  
E. coli Selection: Ampicillin (100 ug/mL)  
ORF Nucleotide Sequence: >RG227459 representing NM\_001144036  
Red=Cloning site Blue=ORF Green=Tags(s)

TTTTGTAATACGACTCACTATAGGGCGGCCGGAATTCGTCGACTGGATCCGGTACCGAGGAGATCTGCC  
GCC**CGATCGCC**

ATGGCGCTGCCTCCAGGCCAGCCGCCCTCCGGCACACACTGCTGCTCCTGCCAGCCCTTCTGAGCTCAG  
TCAAGCCAGAGATTGCCAAGTCGGCGCCAAGTACCAGGAAGCTCAGGGCCAGGCCTCTGGTTGTCTCT  
GTTTGCCTGGTGCCTGCCAACC CGCGCCAATGTCACCTGGATCGACCAGGATGGGCCAGTGACTGTC  
AACACCTCTGACTTCTGGTGGTGGATGCGCAGAATACCCCTGGCTCACCAACCACACGGTGCAGCTGC  
AGCTCCGCAGCCTGGCACACAACCTCTCGTGGTGGCCACCAATGACGTGGGTGTACCAGTGCCTCGT  
TCCAGCCCCAGGCCCTCCCGGCACCCATCTCTGATATCAAGTGACTCCAACAACCTAAAACCTCAACAAC  
GTGCGCCTGCCACGGGAGAACATGTCCCTCCCGTCCAACCTTCAGCTCAATGACCTCACTCCAGATTCCA  
GAGCAGTAAAACAGCAGACCGGAGATGGCTCAGAACACAGCCGGCCAGAGCTTCTGGACCCGGAGCC  
CGGCGCCTCTCACCAGCCAAGGTTTCATCCGCCTCCAGTGTGGCTATATCTATCGAGTGTCCAGC  
GTGAGCAGTGATGAGATCTGGCTC

**ACGCGT**ACGCGGCCGCTCGAG - GFP Tag - GTTTAA

Protein Sequence: >RG227459 representing NM\_001144036  
Red=Cloning site Green=Tags(s)

MALPPGPAALRHTLLLLPALLSSVKPEIAQVGAKYQEAQGPGLLVVLFALVRANPPANVTWIDQDGPVTV  
NTSDFLVLDQNYPWLTNHTVQLQLRSLAHLNLSVVATNDVGVTSASLPAGPSRHPSLISSDSNNLKLNN  
VRLPRENMSLPSNLQLNDLTPDSRAVKPADRQMAQNNSRPELLDPEPGGLLTSQGFIRLPVLGYIYRVSS  
VSSDEIWL

**TRTRPLE** - GFP Tag - V

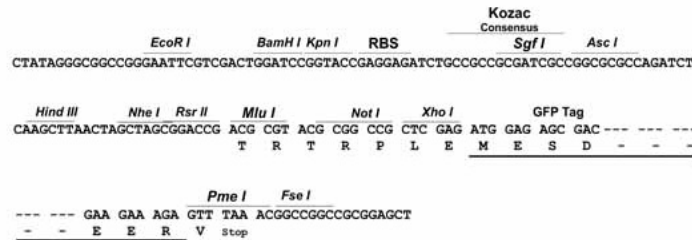
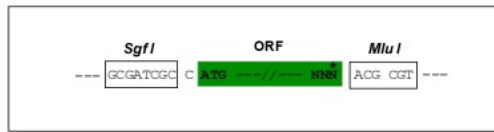


[View online »](#)

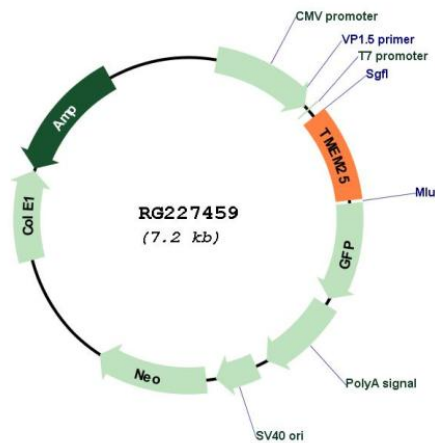
Restriction Sites: SgfI-MluI

Cloning Scheme:

Cloning sites used for ORF Shutting:



Plasmid Map:



ACCN: NM\_001144036

ORF Size: 654 bp

OTI Disclaimer: The molecular sequence of this clone aligns with the gene accession number as a point of reference only. However, individual transcript sequences of the same gene can differ through naturally occurring variations (e.g. polymorphisms), each with its own valid existence. This clone is substantially in agreement with the reference, but a complete review of all prevailing variants is recommended prior to use. [More info](#)

OTI Annotation: This clone was engineered to express the complete ORF with an expression tag. Expression varies depending on the nature of the gene.

<b>Components:</b>	The ORF clone is ion-exchange column purified and shipped in a 2D barcoded Matrix tube containing 10ug of transfection-ready, dried plasmid DNA (reconstitute with 100 ul of water).
<b>Reconstitution Method:</b>	<ol style="list-style-type: none"><li>1. Centrifuge at 5,000xg for 5min.</li><li>2. Carefully open the tube and add 100ul of sterile water to dissolve the DNA.</li><li>3. Close the tube and incubate for 10 minutes at room temperature.</li><li>4. Briefly vortex the tube and then do a quick spin (less than 5000xg) to concentrate the liquid at the bottom.</li><li>5. Store the suspended plasmid at -20°C. The DNA is stable for at least one year from date of shipping when stored at -20°C.</li></ol>
<b>RefSeq:</b>	<u>NM_001144036.2</u>
<b>RefSeq Size:</b>	2107 bp
<b>RefSeq ORF:</b>	657 bp
<b>Locus ID:</b>	84866
<b>UniProt ID:</b>	<u>Q86YD3</u>
<b>Cytogenetics:</b>	11q23.3
<b>Protein Families:</b>	Transmembrane
<b>Gene Summary:</b>	In neurons, modulates the degradation of NMDA receptor GRIN2B subunit. Plays a role in the regulation of neuronal excitability.[UniProtKB/Swiss-Prot Function]