

Product datasheet for **RG227437**

HEF1 (NEDD9) (NM_001142393) Human Tagged ORF Clone

Product data:

Product Type:	Expression Plasmids
Product Name:	HEF1 (NEDD9) (NM_001142393) Human Tagged ORF Clone
Tag:	TurboGFP
Symbol:	NEDD9
Synonyms:	CAS-L; CAS2; CASL; CASS2; HEF1
Mammalian Cell Selection:	Neomycin
Vector:	pCMV6-AC-GFP (PS100010)
E. coli Selection:	Ampicillin (100 ug/mL)



[View online »](#)

ORF Nucleotide
Sequence:

>RG227437 representing NM_001142393
Red=Cloning site Blue=ORF Green=Tags(s)

TTTTGTAATACGACTCACTATAGGGCGGCCGGGAATTCGTCGACTGGATCCGGTACCGAGGAGATCTGCC
GCC**CGGATCGCC**

ATGTGGACAAGGAATCTTATGGCAAGGGCCTTATATGACAATGTCCAGAGTGTGCCGAGGAACCTGGCCT
TTCGCAAGGGAGACATCCTGACCGTCATAGAGCAGAACACAGGGGACTGGAAGGATGGTGGCTGTGCTC
ATTACACGGTCGCAAGGCATTGTCCCAGGCAACCGGGTGAAGCTTCTGATTGGTCCCATGCAGGAGACT
GCCTCCAGTACGAGCAGCCTGCCTCTGGACTGATGCAGCAGACCTTTGGCCAACAGAAGCTCTATCAAG
TGCCAAACCCACAGGCTGCTCCCGAGACACCATCTACCAAGTCCACCTTCTACCAAAAATCAGGGAAT
TTACCAAGTCCCCACTGGCCACGGCACCAAGAACAAGAGGTATATCAGGTGCCACCATCAGTGCAGAGA
AGCATTGGGGGAACAGTGGGCCCCACGTGGGTAAAAAGGTGATAACCCCGTGAGGACAGGCCATGGCT
ACGTATACGAGTACCCATCCAGATACCAAAAGGACGTCTATGATATCCCTCCTTCTCATACCACTCAAGG
GGTATACGACATCCCTCCCTCATCAGCAAAAGGCCCTGTGTTTTTCAGTTCAGTGGGAGAGATAAAACCT
CAAGGGGTGTATGACATCCCGCCTACAAAAGGGGTATATGCCATTCGGCCCTCTGCTTGGCCGGGATGAAG
CAGGGCTTAGGGAAGAAAGACTATGACTTCCCCCTCCCATGAGACAAGCTGGAAGGCCGGACCTCAGACC
GGAGGGGGTTTATGACATTCTCCAACCTGCACCAAGCCAGCAGGGGAAGGACCTTCATGTAAAATACAAC
TGTGACATTCCAGGAGCTGCAGAACCGGTGGCTCGAAGGCACAGAGCCTGTCCCGAATCACCCACCCC
CGCAACTCGGACAGTCACTGGGCTCTCAGAACGACGCATATGATGTCCCGGAGGCGTTCAGTTTCTTGA
GCCACCAGCAGAAACAGTGAGAAAGCAAAACCCAGGAAAGGGATGGTGTATGATGTCCCTCTGCAT
AACCCGCCAGATGCTAAAGGCTCTCGGGACTTGGTGGATGGGATCAACCGATTGTCTTTCTCCAGTACAG
GCAGACCCGGAGTAACATGTCCACGTCTTCCACCTCCTCAAGGAGTCCCTCACTGTCCAGCTCCCAGC
TCAGGACAAAAGGCTCTTCTGGATCCAGACACAGCTATTGAGAGACTTCAGCGGCTCCAGCAGGCCCTT
GAGATGGGTGTCTCCAGCCTAATGGCACTGGTCACTACCGACTGGCGGTGTACGGATATATGGAAGAC
ACATCAATGAAATACGCACAGCAGTGGACAAGGTGGAGCTGTTCTGAAGGAGTACCTCCACTTTGTCAA
GGGAGCTGTTGCAATGCTGCCTGCCTCCCGAACTCATCTCCACAACAAGATGAAGCGGGAGCTGCAA
CGAGTTGAAGACTCCCACCAGATCCTGAGTCAAACAGCCATGACTTAAATGAGTGCAGCTGGTCCCTGA
ATATCTTGCCATCAACAAGCCCCAGAACAAGTGTGACGATCTGGACCGTTTGTGATGGTGGCAAAGAC
GGTGGCCGATGACGCCAAGCAGCTCACCAACCATCAACACCAACGCAGAGGCCCTCTCAGACCCGGC
CCTGGCAGCTTGCATCTGAAGAATGGGCGGAGAGCATCATGAACTCAACGGAGTACCCACACGGTGGCT
CCCAGGGACAGCTGCTGCATCCTGGTGACCACAAGGCCACAGGCCACAACAAGGCACTGCCCCAGGCCCT
GAGCAAGGAGCAGGCCCTGACTGTAGCAGCAGTGTGTTCTGAGAGGAGCTGGATGGATGACTACGAT
TACGTCCACCTACAGGTAAGGAGGAGTTTGGAGGCAACAGAAAGAGCTATTGGAAAAAGAGAATATCA
TGAAACAGAAACAAGATGCAGCTGGAACATCATCAGCTGAGCCAGTTCCAGCTGTTGGAACAAGAGATTAC
AAAGCCCGTGGAGAATGACATCTCGAAGTGAAGCCCTCTCAGAGCCTACCCACCACAAACAGTGGCGTG
AGTGCTCAGGATCGGCAGTTGCTGTGCTTCTACTATGACCAATGTGAGACCCATTTCAATTCCTTCTCA
ACGCCATTGACGCACTCTCAGTTGTGTGCTCAGCTCAGCCAGCCCCGCGAATCTTCGTGGCACACAGCAA
GTTTGTCTCCTCAGTGCACACAACTGGTGTTCATTGGAGACAGCTGACACGGCAGGTGACTGCCCAAG
GACATTGCAACAAAGTCACTGAACTCCAGCAACCAGCTCTGCGAGCAGCTCAAGACCATAGTCATGGCAA
CCAAGATGGCCGCCCTCATTACCCAGCACCAGGCCCTGCAGGAAATGGTGCACCAAGTGCAGACCT
TTCTAGAAATGCCAGCTGTTCAAGCGCTCTTGTGCTGGAGATGGCAACGTTT

ACCGTACGCGGCCGCTCGAG - GFP Tag - GTTTAA

Protein Sequence: >RG227437 representing NM_001142393
Red=Cloning site Green=Tags(s)

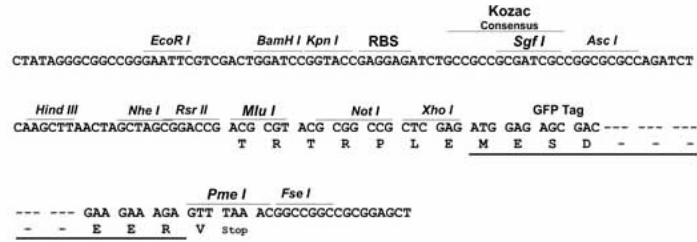
MWTRNLMARALYDNVPECAEELAFRKGDILTVIEQNTGGLEGWWLCSLHGRQGI VPGNRV KLLIGPMQET
ASSHEQPASGLMQQTFGQQKLYQVPNPQAAPRDTIYQVPPSYQNQGIYQVPTGHGTQEVEVYQVPPSVQR
SIGGTS GPHVGGK VITPVRTGHGYVVEYPSRYQKDVYDIPPSHTTQGVYDIPSSAKGPVFSVPVGEIKP
QGVYDIPPTKGVYAIPPSACRDEAGLREKDYDFPPPMRQAGRPDLRPEGVYDIPPTCTKPAGKDLHVKYN
CDIPGAAEPVARRHQSLSPNHPPPQLGQSVGSQNDAYDVPRGVQFLEPPAETSEKANPQERDGVYDVPLH
NPPDAKGSRDLDVGINRLSFSSTGSTRSNMSTSSTSSKESSLASPAQDKRFLDPDTAIERLQRLQQAL
EMGVSSLMALVTTDWRCYGYMERHINEIRTAVDKVELFLKEYLHFVKGAVANAACLPELILHNKMKRELQ
RVEDSHQILSQTSHDLNECSWSLNILAINKPQNKCDLDRFVMVAKTVPDDAKQLTTTINTNAEALFRPG
PGSLHLKNGPESIMNSTEYPHGGSQGQLLHPGDHKAQAHNKALPPGLSKEQAPDCSSSDGSESWMDDYD
YVHLQGKEEFERQQKELLEKENIMKQNKMLEHHQLSQFQLLEQEITKPVENDISKWKPSQSLPTTNSGV
SAQDRQLLCFYDQCETHFISLLNAIDALFSCVSSAQPPIRFVAHSKFVILSAHKLVFIGDTLTRQVTAQ
DIRNKVMNSSNQLCEQLKTIVMATKMAALHYPSTTALQEMVHQVTDLSRNAQLFKRSLLEMATF

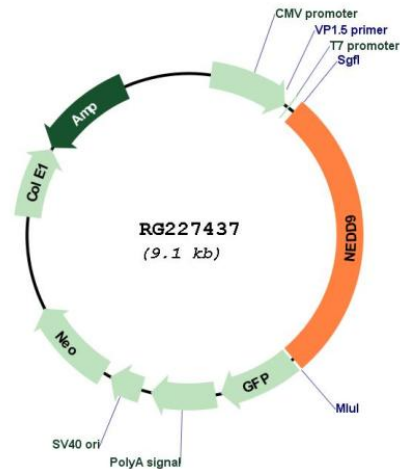
TRTRPLE - GFP Tag - V

Restriction Sites: Sgfl-MluI

Cloning Scheme:

Cloning sites used for ORF Shutting:



Plasmid Map:


ACCN: NM_001142393

ORF Size: 2502 bp

OTI Disclaimer: The molecular sequence of this clone aligns with the gene accession number as a point of reference only. However, individual transcript sequences of the same gene can differ through naturally occurring variations (e.g. polymorphisms), each with its own valid existence. This clone is substantially in agreement with the reference, but a complete review of all prevailing variants is recommended prior to use. [More info](#)

OTI Annotation: This clone was engineered to express the complete ORF with an expression tag. Expression varies depending on the nature of the gene.

Components: The ORF clone is ion-exchange column purified and shipped in a 2D barcoded Matrix tube containing 10ug of transfection-ready, dried plasmid DNA (reconstitute with 100 ul of water).

Reconstitution Method:

1. Centrifuge at 5,000xg for 5min.
2. Carefully open the tube and add 100ul of sterile water to dissolve the DNA.
3. Close the tube and incubate for 10 minutes at room temperature.
4. Briefly vortex the tube and then do a quick spin (less than 5000xg) to concentrate the liquid at the bottom.
5. Store the suspended plasmid at -20°C. The DNA is stable for at least one year from date of shipping when stored at -20°C.

RefSeq: [NM_001142393.1](#), [NP_001135865.1](#)

RefSeq Size: 4745 bp

RefSeq ORF: 2505 bp

Locus ID: 4739

UniProt ID: [Q14511](#)

Cytogenetics: 6p24.2

Gene Summary: The protein encoded by this gene is a member of the CRK-associated substrates family. Members of this family are adhesion docking molecules that mediate protein-protein interactions for signal transduction pathways. This protein is a focal adhesion protein that acts as a scaffold to regulate signaling complexes important in cell attachment, migration and invasion as well as apoptosis and the cell cycle. This protein has also been reported to have a role in cancer metastasis. Alternative splicing results in multiple transcript variants. [provided by RefSeq, Aug 2012]