

## Product datasheet for **RG227435**

### **DAXX (NM\_001141970) Human Tagged ORF Clone**

#### **Product data:**

Product Type:	Expression Plasmids
Product Name:	DAXX (NM_001141970) Human Tagged ORF Clone
Tag:	TurboGFP
Symbol:	DAXX
Synonyms:	BING2; DAP6; EAP1; SMIM40
Mammalian Cell Selection:	Neomycin
Vector:	pCMV6-AC-GFP (PS100010)
E. coli Selection:	Ampicillin (100 ug/mL)



[View online »](#)

ORF Nucleotide  
Sequence:

>RG227435 representing NM\_001141970  
Red=Cloning site Blue=ORF Green=Tags(s)

TTTTGTAATACGACTCACTATAGGGCGGCCGGGAATTCGTCGACTGGATCCGGTACCGAGGAGATCTGCC  
GCCGCGATCGCC

ATGCGAGGTTCTGAGAATTGCGGCGAGGGTTCGCTCGAGAGACGGTTTCTGAGCATCATCGTGCTGGATG  
ATGATGACGAAGATGAAGCAGCTGCTCAGCCAGGGCCCTCCACCCACTCCCAATGCGGCCTCACCTGG  
GGCAGAAGCCCTAGCTCCTCTGAGCCTCATGGGGCCAGAGGAAGCAGTAGTTCGGGCGGCAAGAAATGC  
TACAAGCTGGAGAATGAGAAGCTGTTTCAAGAGTTCCTTGAACCTTTGTAAGATGCAGACAGCAGACCACC  
CTGAGGTGGTCCCATTCTCTATAACCGGCAGCAACGTGCCACTCTCTGTTTTTGGCCTCGGCGGAGTT  
CTGCAACATCCTCTAGGGTCTGTCTCGGGCCGAGCCGGCCAGCCAAGCTCTATGTCTACATCAAT  
GAGCTCTGACTGTTCTCAAGGCCACTCAGCCAAAAAGAAGCTGAACCTGGCCCTGCCGCCACCCT  
CCAATGAGCCCTCTGGGAATAACCTCCACACACCTCTCCTTGGACCCACAAATGCTGAAAACACTGC  
CTCTCAGTCTCAAGGACCCGTGGTTCCCGGCGCAGATCCAGCGTTTGGAGCAGCTGCTGGCGCTCTAT  
GTGGCAGAGATCCGGCGCTGCAGGAAAAGGAGTTGGATCTCTCAGAATTGGATGACCCAGACTCCGCAT  
ACCTGCAGGAGGCACGGTTGAAGCGTAAGCTGATCCGCCTCTTTGGGCGACTATGTGAGCTGAAAGACTG  
CTTTCACTGACCGGCCGTGTCATAGAGCAGCGCATCCCCACCGTGGCACCCGCTACCCAGAGGTTAAC  
AGGCGCATTGAGCGGCTCATCAACAAGCCAGGGCCTGATACCTTCCCTGACTATGGGGATGTGCTTCGGG  
CTGTAGAGAAGGCAGCTGCCCGACACAGCCTTGGCCTCCCCGACAGCAGCTCCAGCTCATGGCTCAGGA  
TGCCTTCCGAGATGTGGGCATCAGGTTACAGGAGCGACGTACCTCGATCTCATCAACTTTGGCTGC  
CACCTCACAGATGACTATAGCCAGGCGTTGACCCTGCACTATCAGATCCTGTGTGGCCCGGCGCCTTC  
GGGAAAACCGGAGTTTGGCCATGAGTCGGCTGGATGAGGTCATCTCCAAATATGCAATGTTGCAAGACAA  
AAGTGAGGAGGGCGAGAGAAAAAGAGAAGAGCTCGGCTCCAAGGCACCTCTCCCACTCTGCAGACACC  
CCCGAAGCCTCCTTGATTCTGGTGAGGGCCCTAGTGAATGGCATCCAGGGGTGCCCTCTGCCTCCA  
GAGCTGAGACAGATGACGAAGACGATGAGGAGAGTGATGAGGAAGAGGAGGAGGAGGAGGAAGAAGAAGA  
GGAGGAGGCCACAGATTCTGAAGAGGAGGAGGATCTGGAACAGATGCAGGAGGGTCAGGAGGATGATGAA  
GAGGAGGACGAAGAGGAAGAAGCAGCAGCAGGTAAGATGGAGACAAGAGCCCCATGTCTCACTACAGA  
TCTCAATGAAAAGAACCTGGAACCTGGCAAACAGATCAGCAGATCTTCAGGGGAGCAGAAAACAAAGG  
ACGCATAGTGCACCATCGTTACTGTGAGAAGAACCCTGGCCCCCTCCAGCATAGATGCTGAAAGCAAT  
GGAGAACAGCCTGAGGAGCTGACCCTGGAGGAAGAAAGCCCTGTGTCTCAGCTCTTTGAGCTAGAGATTG  
AAGCTTTGCCCTGGATACCCCTTCTCTGTGGAGACGGACATTTCTCTTCCAGGAAGCAATCAGAGGA  
GCCCTTACCCTGTCTTAGAGAATGGAGCAGGCATGGTCTCTTCTACTTCTTCAATGGAGGCGTCTCT  
CCTCACAACCTGGGGAGATTCTGGTCCCCCTGCAAAAAATCTCGGAAGGAGAAGAAGCAACAGGATCAG  
GGCCATTAGGAAACAGCTATGTGGAAAGGCAAAGGTCAGTGATGAGAAGAATGGGAAAAAGATATGTAC  
CCTGCCAGCCACCTTCCCCCTGGCTTCTTGGCCCCAGTTGCTGATTCCTCCACGAGGGTGGACTCT  
CCCAGCCATGGCTGGTGACCAGCTCCCTCTGCATCCCTTCTCCAGCCCGGCTGTCCAAACCCCCATT  
CACAGCCTCCTCGGCTGGTACTTGCAAGACAAGTGTGGCCACACAATGCGATCCAGAAGAGATCATCGT  
GCTCTCAGACTTGAT

ACGCGTACGCGGCCGCTCGAG - GFP Tag - GTTTAA

Protein Sequence: >RG227435 representing NM\_001141970  
 Red=Cloning site Green=Tags(s)

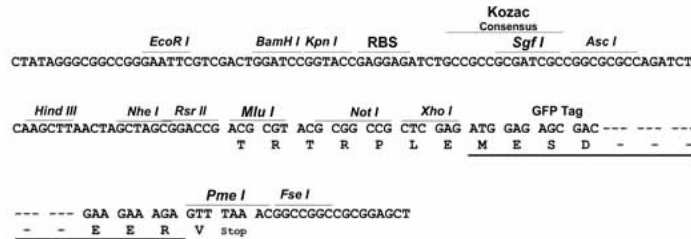
MRGSENCGEGRLERRFLSIIIVLDDDDDEDEAAAQPGPSHPLPNAASPGAEAPSSSEPHGARGSSSSGGKKC  
 YKLENEKLFEEFLELCKMQTADHPEVVPFLYNRQQRASLFLASAEFCNILSRVLSRARSRAKL VYYIN  
 ELCTVLKAHSAKKLNLA PAATTSNEPSGNPPHTLSLDPTNAENTASQSPRTRGSRRIQRLEQLLALY  
 VAEIRRLQEKELDLSELDDPSAYLQEARLKRKLI RLFGR LCELKDCSSLTGRVIEQRIPYRGTRYPEVN  
 RRIERL INKPGPDTFPDYGDVLR AVEKAAARHSLGLPRQQLQLMAQDAFRDVGIRLQERRHLDLIYNFGC  
 HLTDDYRPGVDPALSDPVLARLRNRS LAMSRLDEVI SKYAMLQDKSEEGEKRRARLQGTSSHSADT  
 PEASLDSGEGPSGMASQGCPSASRAETDDEDDEESDEEEEEEEEEEEATDSEEEEELEQMGEQEDDE  
 EEEEEAAAGKDGKSPMSSLQISNEKNLEPGKQISRSSGEQQNKGRIVSPSLLSEEPLAPSSIDAESN  
 GEQPEEL TLEESPVSQLFELEIEALPLDTPSSVETDISSSRKQSEEPFTTVLENGAGMVSTSFNGGVS  
 PHNWGDSGPPCKKSRKEKQTGSGPLGNSYVERQRSVHEKNGKICTLPSPSPLASLAPVADSSTRVDS  
 PSHGLVTSLLCIPSPARLSQTPHSQPPRPGTCKTSVATQCDPEEIIVLSDS

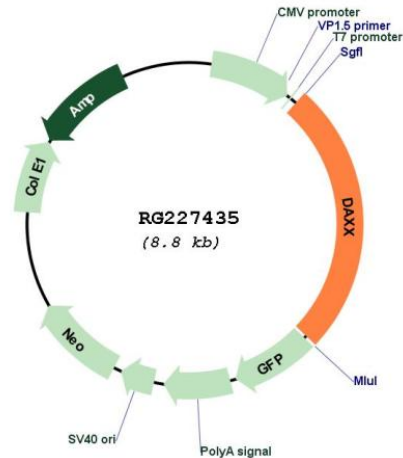
TRTRPLE - GFP Tag - V

Restriction Sites: SgfI-MluI

Cloning Scheme:

Cloning sites used for ORF Shuttling:



**Plasmid Map:**


**ACCN:** NM\_001141970

**ORF Size:** 2256 bp

**OTI Disclaimer:** The molecular sequence of this clone aligns with the gene accession number as a point of reference only. However, individual transcript sequences of the same gene can differ through naturally occurring variations (e.g. polymorphisms), each with its own valid existence. This clone is substantially in agreement with the reference, but a complete review of all prevailing variants is recommended prior to use. [More info](#)

**OTI Annotation:** This clone was engineered to express the complete ORF with an expression tag. Expression varies depending on the nature of the gene.

**Components:** The ORF clone is ion-exchange column purified and shipped in a 2D barcoded Matrix tube containing 10ug of transfection-ready, dried plasmid DNA (reconstitute with 100 ul of water).

**Reconstitution Method:**

1. Centrifuge at 5,000xg for 5min.
2. Carefully open the tube and add 100ul of sterile water to dissolve the DNA.
3. Close the tube and incubate for 10 minutes at room temperature.
4. Briefly vortex the tube and then do a quick spin (less than 5000xg) to concentrate the liquid at the bottom.
5. Store the suspended plasmid at -20°C. The DNA is stable for at least one year from date of shipping when stored at -20°C.

**RefSeq:** [NM\\_001141970.2](#)

**RefSeq Size:** 2563 bp

**RefSeq ORF:** 2259 bp

**Locus ID:** 1616

<b>Cytogenetics:</b>	6p21.32
<b>Protein Families:</b>	Druggable Genome, Stem cell - Pluripotency, Transcription Factors
<b>Protein Pathways:</b>	Amyotrophic lateral sclerosis (ALS), MAPK signaling pathway
<b>Gene Summary:</b>	<p>This gene encodes a multifunctional protein that resides in multiple locations in the nucleus and in the cytoplasm. It interacts with a wide variety of proteins, such as apoptosis antigen Fas, centromere protein C, and transcription factor erythroblastosis virus E26 oncogene homolog 1. In the nucleus, the encoded protein functions as a potent transcription repressor that binds to sumoylated transcription factors. Its repression can be relieved by the sequestration of this protein into promyelocytic leukemia nuclear bodies or nucleoli. This protein also associates with centromeres in G2 phase. In the cytoplasm, the encoded protein may function to regulate apoptosis. The subcellular localization and function of this protein are modulated by post-translational modifications, including sumoylation, phosphorylation and polyubiquitination. Alternative splicing results in multiple transcript variants. [provided by RefSeq, Nov 2008]</p>