

Product datasheet for **RG227428**

NGLY1 (NM_001145294) Human Tagged ORF Clone

Product data:

Product Type:	Expression Plasmids
Product Name:	NGLY1 (NM_001145294) Human Tagged ORF Clone
Tag:	TurboGFP
Symbol:	NGLY1
Synonyms:	CDDG; CDG1V; PNG-1; PNG1; PNGase
Mammalian Cell Selection:	Neomycin
Vector:	pCMV6-AC-GFP (PS100010)
E. coli Selection:	Ampicillin (100 ug/mL)



[View online »](#)

ORF Nucleotide Sequence:

>RG227428 representing NM_001145294
 Red=Cloning site Blue=ORF Green=Tags(s)

TTTTGTAATACGACTCACTATAGGGCGGCCGGAATTCGTCGACTGGATCCGGTACCGAGGAGATCTGCC
 GCC**CGCATCGCC**

ATGAGAAACCCTAATGATGAAAAATATAGATCCATCCGGATTGAAACACAGCCTTTTCTACTAGACTCT
 TGCTGTGAGAGGAGCTGTTGAATGTTTATTTGAAATGGCTTTGAAAGAGGGAGAAACACATCTCATCTT
 TCCTAAAAAGCTTCAGTGGAGCAGCTGCAAAAAATTCGTGACCTGATTGCCATAGAGAGAAGTAGCAGA
 CTGGATGGCTCAAATAAGAGCCACAAAGTAAAGTCATCTCAGCAACCTGCAGCCAGTACCCAGCTTCCTA
 CAACACCATCTTCAAATCCCAGTGGGTTAAACCAGCACACAAGGAACCGTCAAGGGCAGTCATCAGATCC
 ACCATCTGCTTCAACGGTTGCTGCTGACTCAGCCATTCTAGAAGTTCTTCAGTCCAACATTCAGCATGTG
 CTGGTCTATGAAAATCCTGCTCTCAGGAGAAAGCGTTGGCTTGATTCCGGTCCAAGAATAAAAAAGGA
 AATCACAAGAAAAGTTATCGAGAGCTAGAAAATGGATAAAGGTATCAATATAAGTGATGAGGATTTTCT
 TTTGCTGGAGCTTTTGCAGTGGTTAAGGAAGAATTTTTTCACTGGTGAATAACGTTTTGTGCAGCAAA
 TGTGGTGGACAGACTAGGTCTAGAGATAGATCATTACTGCCAGTGATGATGAGCTGAAGTGGGGTGCAA
 AGGAAGTGAAGATCATTACTGTGATGCCTGCCAGTTCAGCAATCGATTCCAAGATATAATAACCCCTGA
 GAACTTTTGGAAACAAGATGTGGACGGTGTGGCGAGTGGGCCAATTGTTTTACTGTGCTGCCGAGCT
 GTAGGGTTTGAAGCTCGCTATGTTTGGGATTACACAGACCATGTCTGGACAGAAGTCTATTCTCCTTCTC
 AGCAGCGGTGGCTGCACTGTGATGCATGTGAAGATGTCTGTGACAAGCCACTCCTTATGAAATAGGATG
 GGGCAAGAAGCTTTCCTATGTCATAGCATTTCAAAAGATGAGGTAGTTGATGCACTTGGCGATATTCC
 TGCAACATGAAGAGGTGATTGCCAGAAGAACTAAGGTTAAAGAAGCATTACTTCGAGACACTATAATG
 GGCTTAATAAGCAGAGGCAACTGTTTTTGTGCAAAAACAGAAGGAAAGAAGCTTCCAGAGGATAATTGT
 GGAGCTTGTGAAATTTATATCTCCAAAACCCCTAAACCTGGAGAACTTGGGGGAAGAATATCTGGGTCA
 GTGGCTTGGAGAGTAGCCCGAGGTGAAATGGGTCTACAGAGAAAAGAAACCTTGTATTCCCTGTGAAA
 ATGAGAAGATTTCTAAACAGCTCCACCTTTGTTACAATATTGTGAAAGATCGTTATGTTGAGTTTCAAA
 TAACAATCAAACATTTCTGGATGGGAGAATGGCGTGTGGAAAATGGAATCTATATTCAGAAAAGTTGAA
 ACAGACTGGCACATGGTATATTTGGCCGAAAGGAAGGATCATCTTTGCTTATATTTCTGGAAGTTTGG
 AGTGTGGTCACTGGCCTAAAAGTAGATAGCATTCTATTAGAACAAGTAGTCAAACCTTTTCACTGCG
 AACAGTAGAATGGAATTGCATCTGATACAGCACAAGTAGAACTGACAGGCGATAACAGTCTTCACTCC
 TATGCTGATTTTCTGGTCCACTGAAGTTATTTTGAAGCAGAATTAAGCAGAGGAGATGGTATGTCG
 CTTGGCAACACCCAGCTGTTAGACAAGCTTAAATGACCATGAAGAAAATTGTTTGGAGATAATTAT
 AAAATTCAGTGACCTT

ACGCGTACGCGGCCGCTCGAG - GFP Tag - GTTTAA

Protein Sequence:

>RG227428 representing NM_001145294
 Red=Cloning site Green=Tags(s)

MRPNDEKYRSIRIGNTAFSTRLLPVRGAVECLFEMGFEEGETHLIFPKASVEQLQKIRDLIAIERSR
 LDGSNKSCHKVSSQPPAASTQLPTTPSSNPSGLNQHTRNRQGSDDPPSASTVAADSAILEVLQSNIQHV
 LYYENPALQEALACIPVQELKRKSQEKLSRARKLDKGINISDEDFLLLELLHWFKEEFFHWVNNVLCCK
 CGGQTRSRRSLLPSDELKWKAKEVEDHYCDACQFSNRFPYNNPEKLLLETRCGRCGEWANCFTLCCRA
 VGFERYVWDYTDHVWTEVYSPSQQRWLHCDACEDVCDKPLLYEIGWGKKLSYVIAFSKDEVVDVTWRY
 CKHEEVIARRTKVKEALLRDTINGLNKQRQLFLSENRRKELLQRIIVELVEFISPKTPKPGELGGRI
 SGVAVRVARVARGEMGLQRKETFIPCENEKISKQLHLCYNIKVDYVYVSNNNQTIISGWENGVWKMESIFR
 KVE TDWHMYYLARKEGSSFAYISWKFECGSVGLKVDSISIRTSSQTFQTGTVEWKLRSDTAQVELTGD
 NSLHLS YADFSGATEVILEAELSRGDDVAWQHTQLFRQSLNDHEENCLEIIKFSDL

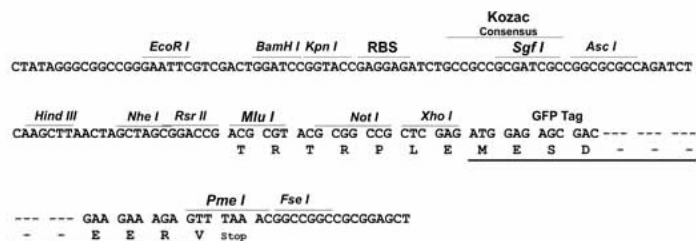
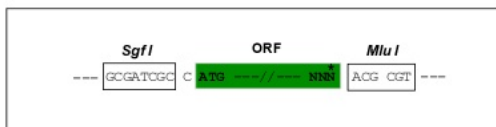
TRTRPLE - GFP Tag - V

Restriction Sites:

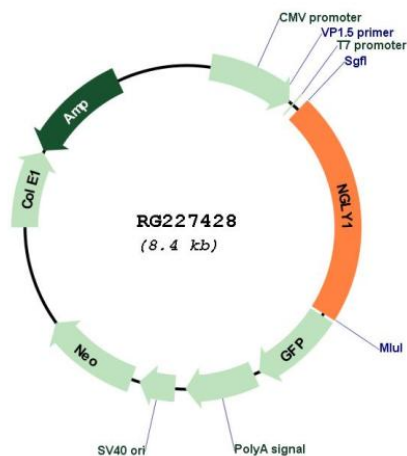
Sgfl-MluI

Cloning Scheme:

Cloning sites used for ORF Shutting:



Plasmid Map:



ACCN: NM_001145294
 ORF Size: 1836 bp

OTI Disclaimer:	The molecular sequence of this clone aligns with the gene accession number as a point of reference only. However, individual transcript sequences of the same gene can differ through naturally occurring variations (e.g. polymorphisms), each with its own valid existence. This clone is substantially in agreement with the reference, but a complete review of all prevailing variants is recommended prior to use. More info
OTI Annotation:	This clone was engineered to express the complete ORF with an expression tag. Expression varies depending on the nature of the gene.
Components:	The ORF clone is ion-exchange column purified and shipped in a 2D barcoded Matrix tube containing 10ug of transfection-ready, dried plasmid DNA (reconstitute with 100 ul of water).
Reconstitution Method:	<ol style="list-style-type: none">1. Centrifuge at 5,000xg for 5min.2. Carefully open the tube and add 100ul of sterile water to dissolve the DNA.3. Close the tube and incubate for 10 minutes at room temperature.4. Briefly vortex the tube and then do a quick spin (less than 5000xg) to concentrate the liquid at the bottom.5. Store the suspended plasmid at -20°C. The DNA is stable for at least one year from date of shipping when stored at -20°C.
RefSeq:	NM_001145294.1 , NP_001138766.1
RefSeq Size:	2539 bp
RefSeq ORF:	1839 bp
Locus ID:	55768
UniProt ID:	Q96IV0
Cytogenetics:	3p24.2
Gene Summary:	This gene encodes an enzyme that catalyzes hydrolysis of an N(4)-(acetyl-beta-D-glucosaminy) asparagine residue to N-acetyl-beta-D-glucosaminyamine and a peptide containing an aspartate residue. The encoded enzyme may play a role in the proteasome-mediated degradation of misfolded glycoproteins. Multiple transcript variants encoding different isoforms have been found for this gene.[provided by RefSeq, Feb 2009]