

Product datasheet for **RG227421**

SLITRK2 (NM_001144004) Human Tagged ORF Clone

Product data:

Product Type:	Expression Plasmids
Product Name:	SLITRK2 (NM_001144004) Human Tagged ORF Clone
Tag:	TurboGFP
Symbol:	SLITRK2
Synonyms:	CXorf1; CXorf2; SLITL1; TMEM257
Mammalian Cell Selection:	Neomycin
Vector:	pCMV6-AC-GFP (PS100010)
E. coli Selection:	Ampicillin (100 ug/mL)



[View online »](#)

ORF Nucleotide Sequence:

>RG227421 representing NM_001144004
 Red=Cloning site Blue=ORF Green=Tags(s)

TTTTGTAATACGACTCACTATAGGGCGGCCGGGAATTCGTCGACTGGATCCGGTACCGAGGAGATCTGCC
 GCC**CGGATCGCC**

ATGCTGAGCGCGCTTTGGTTCCCTCAGTGTGTTAACCGTGGCCGGGATCTTACAGACAGAGAGTCGAAAA
 CTGCCAAAGACATTTGCAAGATCCGCTGTCTGTGCGAAGAAAAGGAAAAGTACTGAATATCAACTGTGA
 GAACAAAGGATTTACAACAGTTAGCCTGTCCAGCCCCCAGTATCGAATCTATCAGCTTTTTCTCAAT
 GGAACCTCTTGACAAGACTGTATCCAAACGAATTTGTCAATTACTCCAACGCGGTGACTCTTACCTAG
 GTAACAACGGGTTACAGGAGATCCGAACGGGGCATTCACTGGCCTGAAAACCTCTCAAAGACTGCATCT
 CAACAACAACAAGCTTGAGATATTGAGGGAGGACACCTTCTAGGCTGGAGAGCCTGGAGTATCTCCAG
 GCCGACTACAATTACATCAGTGCATCGAGGCTGGGGCATTCAAGCAACTTAACAAGCTCAAAGTGTCTCA
 TCCTGAATGACAACCTTCTGCTTCTACTGCCAGCAATGTGTTCCGCTTTGTCTGCTGACCCACTTAGA
 CCTCAGGGGGAATAGGCTAAAAGTAATGCCTTTTGTGGCGTCTTGAACATATTGGAGGGATCATGGAG
 ATTCAGCTGGAGGAAAATCCATGGAATTGCACTTGTGACTTACTTCTCTCAAGGCTGGCTAGACACCA
 TAACTGTTTTTGTGGGAGAGATTGTCTGTGAGACTCCCTTTAGGTTGCATGGGAAAAGACGTGACCCAGCT
 GACCAGGCAAGACCTCTGTCCCAGAAAAGTGCCAGTGATTCCAGTCAGAGGGGAGCCATGCTGACACC
 CACGTCCAAGGCTGTCACTACAATGAATCCTGCTCTCAACCCAACAGGGCTCCGAAAGCCAGCCGGC
 CGCCAAAATGAGAAATCGTCCAACCTCTCGAGTACTGTGTCAAAGGACAGGCAAAGTTTTGGACCCAT
 CATGGTGTACCAGACCAAGTCTCCTGTGCCTCTCACCTGTCCAGCAGCTGTGTCTGCACCTCTCAGAGC
 TCAGACAATGGTCTGAATGTAACCTGCCAAGAAAGGAAGTTCATAATATCTCTGACCTGCAGCCAAAAC
 CGACCAGTCCAAGAAACTCTACCTAACAGGGAACCTATCTTCAAACCTGTCTATAAAGATGACCTTTAGA
 ATACAGTTCTTTGGACTTACTGCACTTAGGAAACAACAGGATTGCAGTCATTCAGGAAGGTGCCTTTACA
 AACCTGACCAGTTTACGCAGACTTTATCTGAATGGCAATTACCTTGAAGTGTGTACCTTCTATGTTTG
 ATGGACTGCAGAGCTTGAATATCTCTATTTAGAGTATAATGTCATTAAGGAAATTAAGCCTCTGACCTT
 TGATGCTTTGATTAACCTACAGTACTGTTTCTGAACAACAACCTTCTTCGGTCTTACCTGATAATATA
 TTTGGGGGACGGCCCTAACAGGCTGAATCTGAGAAACAACCTTTTCTCACCTGCCCGTAAAGGGG
 TTCTGGATCAGCTCCCGCTTTCATCCAGATAGATCTGCAGGAGAACCCCTGGGACTGTACCTGTGACAT
 CATGGGCTGAAAGACTGGACAGAACATGCCAATTCCTGTGCATTAATGAGGTGACTTGCGAATCT
 CCTGCTAAGCATGCAGGGGAGATACTAAAATTTCTGGGGAGGAGGCTATCTGTCCAGACAGCCAAACT
 TGTGAGATGGAACCGTCTGTCAATGAATCACAATACAGACACACCTCGGTGCTTAGTGTGTCTCTAG
 TTCTATCTGAACTACACACTGAAGTTCACCTGTCTGTCTTAATTCTGGGATTGCTTGTGTTTTCATC
 TTATCTGTCTGTTTTGGGGCTGGTTTATTCGTCTTTGTCTTGAACGCCGAAAGGGAGTGCCGAGCGTTC
 CCAGGAATACCAACAACCTTAGACGTAAGCTCCTTTCAATTACAGTATGGGTCTTACAACACTGAGACTCA
 CGATAAAACAGACGGCCATGTCTACAATATACCCCCACCTGTGGGTGAGATGTGCAAAAACCCATC
 TACATGCAGAAGGAAGGAGACCCAGTAGCCTATTACCGAAACCTGCAAGAGTTGAGCTATAGCAACCTGG
 AGGAGAAAAAAGAAGAGCCAGCCACACCTGCTTACACAATAAGTGCCACTGAGCTGCTAGAAAAGCAGGC
 CACACCAAGAGAGCCTGAGCTGCTGTATCAAAATATTGCTGAGCGAGTCAAGGAACTTCCAGCCAGGC
 CTAGTCCACTATAACTTTTGTACCTTACCTAAAAGGCAGTTTGCCCTTCTATGAATCTCGACGCCAAA
 ACCAAGACAGAATCAATAAAACCGTTTTATATGGAACCTCCAGGAAATGCTTTGTGGGGCAGTCAAACC
 CAACCACCTTTACTGCAAGCTAAGCCGAATCAGAACCAGGACTACCTCGAAGTTCTGAAAAACAACT
 GCAATCAGTCAGCTG

ACGGTACGCGGCCGCTCGAG - GFP Tag - GTTTAA

Protein Sequence: >RG227421 representing NM_001144004
Red=Cloning site Green=Tags(s)

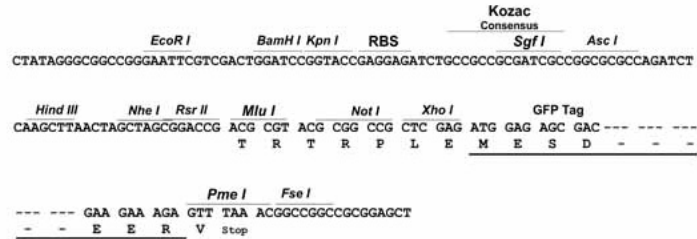
MLSGVWFLSVLTVAGILQTESRKTAKDICKIRCLCEEKENVLNINCENKGFTTVSLLQPPQYRIYQLFLN
GNLLTRLYPNEFVNYSNAVTLHLGNGLQEIRTGAFSGLKTLKRLHLNNKLEILREDTFLGLESLEYLQ
ADYNYISAIEAGAFSKLNKLVILNDNLLLSPSNVFRFVLLTHLDLRGNRLKVMPFAGVLEHIGGIME
IQLEENPWNCTCDLLPLKAWLDTITVFVGEIVCETPFRLHGKDVTQLTRQDLCPRKSADSSQRGSHADT
HVQRLSPTMNPALNPTRAPKASRPPKMRNRPTPRVTVSKDRQSFPIMVYQTKSPVPLTCPSSCVCTSQS
SDNGLNVNCQERKFTNISDLQPKPTSPKKLYLTGNYLQTVYKNDLLEYSSLDLLHLGNNRIAVIQEAGFT
NLTSRRLYLNGNYLEVLPSMFDGLQSLQYLLEYNVIKEIKPLTFDALINLQLLFLNNNLLRSLPDNI
FGGTALTRLNLRNNHFSHLPVKGVLQPAFIQIDLQENPWDCTCDIMGLKDWTEHANSPIINEVTCES
PAKHAGEILKFLGREAIKPDSPNLSDGTVLSMNHNTDTPRSLSVSPSSPELHTEVPLSVLILGLLVVFI
LSVCFGAGLFFVFLKRRKGVPSVPRNTNNDVSSFQYQYGSYNTETHDKTDGHVYNYIPPPVGMQCNPI
YMQKEGDPVAYYRNLEQFYSYNLEEKKEEPATPAYTISATELLEKQATPREPELLYQNI AERVKELPSAG
LVHYNFCTLPKRQFAPSYESRRQNQDRINKTVLYGTPRCKFVGQSKPNHPLLQAKPQSEPDYLEVLEKQT
AISQL

TRTRPLE - GFP Tag - V

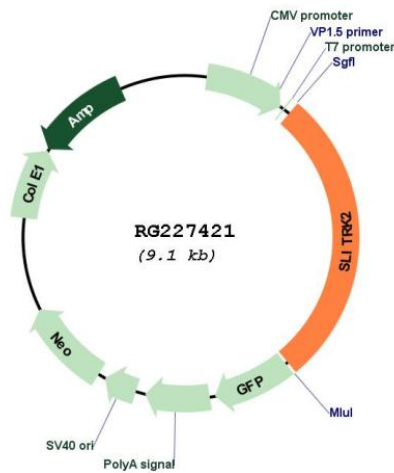
Restriction Sites: Sgfl-MluI

Cloning Scheme:

Cloning sites used for ORF Shuttling:



Plasmid Map:



ACCN:	NM_001144004
ORF Size:	2535 bp
OTI Disclaimer:	The molecular sequence of this clone aligns with the gene accession number as a point of reference only. However, individual transcript sequences of the same gene can differ through naturally occurring variations (e.g. polymorphisms), each with its own valid existence. This clone is substantially in agreement with the reference, but a complete review of all prevailing variants is recommended prior to use. More info
OTI Annotation:	This clone was engineered to express the complete ORF with an expression tag. Expression varies depending on the nature of the gene.
Components:	The ORF clone is ion-exchange column purified and shipped in a 2D barcoded Matrix tube containing 10ug of transfection-ready, dried plasmid DNA (reconstitute with 100 ul of water).
Reconstitution Method:	<ol style="list-style-type: none">1. Centrifuge at 5,000xg for 5min.2. Carefully open the tube and add 100ul of sterile water to dissolve the DNA.3. Close the tube and incubate for 10 minutes at room temperature.4. Briefly vortex the tube and then do a quick spin (less than 5000xg) to concentrate the liquid at the bottom.5. Store the suspended plasmid at -20°C. The DNA is stable for at least one year from date of shipping when stored at -20°C.
RefSeq:	NM_001144004.3
RefSeq Size:	3922 bp
RefSeq ORF:	2538 bp
Locus ID:	84631
UniProt ID:	Q9H156
Cytogenetics:	Xq27.3
Protein Families:	Transmembrane
Gene Summary:	This gene encodes an integral membrane protein that contains two N-terminal leucine-rich repeats domains and contains C-terminal regions similar to neurotrophin receptors. The encoded protein may play a role in modulating neurite activity. Alternatively spliced transcript variants encoding the same protein have been described.[provided by RefSeq, Feb 2010]