

Product datasheet for **RG227418**

KIAA0427 (CTIF) (NM_001142397) Human Tagged ORF Clone

Product data:

| | |
|---------------------------|---|
| Product Type: | Expression Plasmids |
| Product Name: | KIAA0427 (CTIF) (NM_001142397) Human Tagged ORF Clone |
| Tag: | TurboGFP |
| Symbol: | CTIF |
| Synonyms: | Gm672; KIAA0427 |
| Mammalian Cell Selection: | Neomycin |
| Vector: | pCMV6-AC-GFP (PS100010) |
| E. coli Selection: | Ampicillin (100 ug/mL) |



[View online »](#)

ORF Nucleotide Sequence:

>RG227418 representing NM_001142397
 Red=Cloning site Blue=ORF Green=Tags(s)

TTTTGTAATACGACTCACTATAGGGCGGCCGGAATTCGTCGACTGGATCCGGTACCGAGGAGATCTGCC
 GCC**CGGATCGCC**

ATGAAAACTCCTCTGCAGCATCAGCCTCCTCGGAGGCAGGGAGCAGCCGCTCCCAGGAGATCGAGGAGC
 TGGAGCGCTTCATCGACAGCTACGTGCTGGAGTACCAGGTGCAGGGGCTGCTGGCTGACAAGACGGAGGG
 TGATGGCGAGAGCGAGAGACCCAGTCCCACATCTCCAGTGGACAGCGGACTGCAGCGAACCGCTGGAC
 AGCAGCTGTTCTCTCCCGAGGGCGAGCCCCCACAGCAGAATGGCAGCAAAGACAACCTCTGGACA
 TGCTGGGCACGGACATCTGGGCGCCAACACCTTCGATTCTCAGTGGTCCACCTGGGACCTGCAGCC
 GAAAAAGCTGGACTTCACCCAGTCCACCAGTCCGACACACGCCAACAGCAGCCCTGCCACACATC
 GACCGCAAGGGTGTGGCAAAGGAAGTGAAGATGGGATGGCATCAACCTGAATGACATCGAGAAGG
 TCCTTCCAGCCTGGCAGGGCTACCACCCGATGCCCATGAAGTGGAGATCGCACACCAAGAAGCTGTT
 CCGCAGGAGGAGAAATGATCGAAGCGGCAGCAGAGACCTCCGGGGGCAACAAGCCCCAACAGCATGGT
 GACCACAGCCAGGCAGTGCCAAACACAACAGGGACCACCAGAAATCCTACCAGGGGGGCTCAGCACCC
 ACCCTCAGGGAGGCCACTCACCATGGCTACAGCCAGAACCAGCGCTGGCACCATGGCAACATGAAGCA
 CCCACCAGGCGACAAGGGGGAGGCAGGCGCACACCCGAATGCCAAAGAGACCATGACCATCGAGAACCCA
 AAAGTGGAGGACTGCAGGGGACACCGGGCACAGCAGCCTTGAGGCCCGCCGACGCCCTGACACCCTGG
 CCCCAGTGGCTTCTGAGCGGCTGCCCCACAGCAGTCAAGGGGGCCAGAGGTTGAGACAAAACGTAAGA
 CAGTATTTCCCGAGCGCATCGGGAGCGGCCAAAATACCCTGCTCCAGTCTTCAAAGACAGACTG
 CGCGCAAGGCTAAAGAAAAGTACCGGATGAAGTGGCGTGGAGACGACCACTCCCAGCAGAACAAGA
 TGGACAAGCTGATCGAGATCCTGAACAGCATGCGGAACAACAGCAGCGACGTGGACACCAAGCTCACC
 CTTTCATGGAGGAGGCCAGAACTCCACCAACTCCGAGGAGATGCTGGGCGAGATCGTGCCACAATCTAC
 CAGAAGGCTGTGTCGACCGCAGCTTCGCCTTCCAGCTGCCAAGCTCTGCGACAAGATGCGCTCTTTA
 TGGTGGAGGGGACCAAGTCCGGAGCCTGCTCCTCAACATGCTGCAGAAGGACTTACCGTGCAGGAGGA
 GCTGCAGCAGCAGGACGTGGAGCGCTGGCTGGCTTTCACCTTCTGTGCGAGGTCTTCGGCACCATG
 CGCAGCAGCACAGGCGAGCCCTCCGTGTGCTCGTGTGCCCATCTACACCTGCCTCAGGGAGCTTTGC
 AATCTCAGGATGTGAAGGAAGATGCTGTCCTTTGCTGCTATGGAGCTGCAGAGTACAGGCCGGCTGCT
 GGAGGAACAGCTGCCTGAGATGATGACAGAGCTCCTGGCCAGCGCACGGGACAAGATGCTGTGCCCTCG
 GAGTCCATGCTGACCCGGTCTGCTCCTAGAGGTCATCGAGCTCCACGCTAACAGCTGGAACCCCTGTA
 CGCCCCCATCACGCAGTACTACAACAGAACCATCCAGAACTGACAGCC

ACGCGTACGCGGCCGCTCGAG - GFP Tag - GTTTAA

Protein Sequence:

>RG227418 representing NM_001142397
 Red=Cloning site Green=Tags(s)

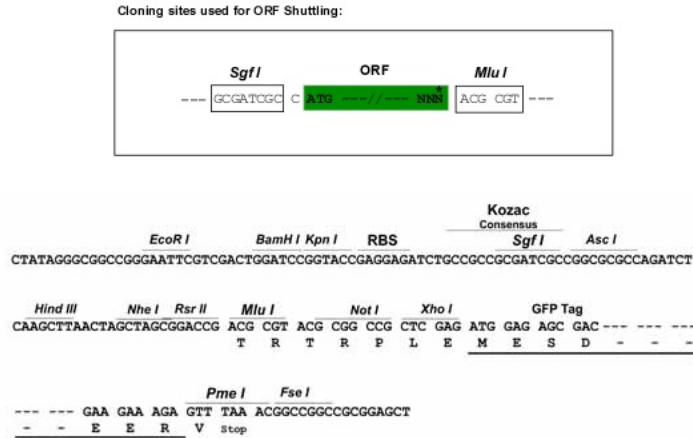
MENSSAASASSEAGSSRSQIEELERFIDSYVLEYQVQGLLADKTEGDGESERTQSHISQWTADCSEPLD
 SCSFSRGRAPPQNGSKDNSLMLGTDIWAANTFDSFSGATWDLQPEKLDFTQFHRKVRHTPKQPLPHI
 DREGCGKGLLEDGGINLNDIEKVLPAWQGYHMPHEVEIAHTKKLFRRRNRDRRQQRPPGGNKPQQHG
 DHQPGSAKHNRDHQKSYQGSAPHSGRPTHGYSQNRWVHGNMKHPPGDKGEAGAHNAKETMTIENP
 KLEDTAGDTGHSSLEAPRSPDTLAPVASERLPPQQSGGPEVETKRKDSILPERIGERPKITLLQSSKDRL
 RRRLEKEVPDEVAVETTTQQNKMDKLEIILNSMRNNSDVTDLTTFMEEAQNSTNSEMLGEIVRTIY
 QKAVSDRSFAFTAALKCDKMALFMVEGTFKFRSLLLNLQKDFTVREELQQQDVERWLGFIITFLCEVFGTM
 RSSTGEPFRVLVCPITYCLRELLQSQDVKEDAVLCCSMELQSTGRLLLEQLPEMTELLASARDKMLCPS
 ESMLTRSLLLEVIELHANSWNPLTPPITQYYNRTIQKLTAA

TRTRPLE - GFP Tag - V

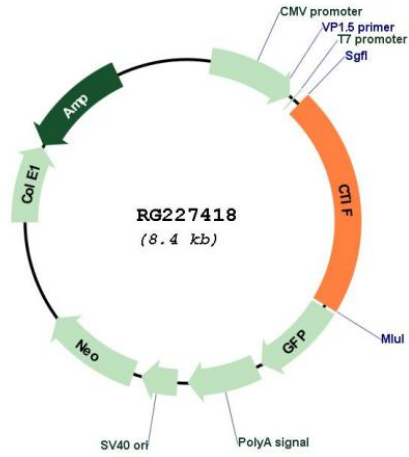
Restriction Sites:

SgfI-MluI

Cloning Scheme:



Plasmid Map:



ACCN: NM_001142397

ORF Size: 1800 bp

| | |
|-------------------------------|---|
| OTI Disclaimer: | The molecular sequence of this clone aligns with the gene accession number as a point of reference only. However, individual transcript sequences of the same gene can differ through naturally occurring variations (e.g. polymorphisms), each with its own valid existence. This clone is substantially in agreement with the reference, but a complete review of all prevailing variants is recommended prior to use. More info |
| OTI Annotation: | This clone was engineered to express the complete ORF with an expression tag. Expression varies depending on the nature of the gene. |
| Components: | The ORF clone is ion-exchange column purified and shipped in a 2D barcoded Matrix tube containing 10ug of transfection-ready, dried plasmid DNA (reconstitute with 100 ul of water). |
| Reconstitution Method: | <ol style="list-style-type: none">1. Centrifuge at 5,000xg for 5min.2. Carefully open the tube and add 100ul of sterile water to dissolve the DNA.3. Close the tube and incubate for 10 minutes at room temperature.4. Briefly vortex the tube and then do a quick spin (less than 5000xg) to concentrate the liquid at the bottom.5. Store the suspended plasmid at -20°C. The DNA is stable for at least one year from date of shipping when stored at -20°C. |
| RefSeq: | NM_001142397.2 |
| RefSeq Size: | 5828 bp |
| RefSeq ORF: | 1803 bp |
| Locus ID: | 9811 |
| UniProt ID: | O43310 |
| Cytogenetics: | 18q21.1 |
| Gene Summary: | CTIF is a component of the CBP80 (NCBP1; MIM 600469)/CBP20 (NCBP2; MIM 605133) translation initiation complex that binds cotranscriptionally to the cap end of nascent mRNA. The CBP80/CBP20 complex is involved in a simultaneous editing and translation step that recognizes premature termination codons (PTCs) in mRNAs and directs PTC-containing mRNAs toward nonsense-mediated decay (NMD). On mRNAs without PTCs, the CBP80/CBP20 complex is replaced with cytoplasmic mRNA cap-binding proteins, including EIF4G (MIM 600495), and steady-state translation of the mRNAs resumes in the cytoplasm (Kim et al., 2009 [PubMed 19648179]).[supplied by OMIM, Dec 2009] |