

Product datasheet for **RG227386**

DENN (MADD) (NM_001135944) Human Tagged ORF Clone

Product data:

Product Type:	Expression Plasmids
Product Name:	DENN (MADD) (NM_001135944) Human Tagged ORF Clone
Tag:	TurboGFP
Symbol:	MADD
Synonyms:	DEEAH; DENN; IG20; NEDDISH; RAB3GEP; RabGEF
Mammalian Cell Selection:	Neomycin
Vector:	pCMV6-AC-GFP (PS100010)
E. coli Selection:	Ampicillin (100 ug/mL)
ORF Nucleotide Sequence:	>RG227386 representing NM_001135944 Red=Cloning site Blue=ORF Green=Tags(s)

TTTTGTAATACGACTCACTATAGGGCGCCGGGAATTCGTCGACTGGATCCGGTACCGAGGAGATCTGCC
GCC**CGATCGCC**

ATGGTGCAAAAGAAGAAGTTCTGTCTCGGTTACTTGACTATCTAGTGATCGTAGGGCCAGGCACCCGA
GCAGTGATAGCGTGGCCAGACTCTGAATTGCTACGGCGATACCCCTTGGAGGATCACACTGAGTTTCC
CCTGCCCCAGATGTAGTGTCTTCTGCCAGCCGAGGGTGCCTGAGCGTGGCGCAGCGCGCATGAGC
CTTCGGGATGATACCTCTTTGTCTTACCCTCACTGACAAGGACTGGAGTACGCGATATGGCATCT
GTGTTAACTTCTACCGCTCCTTCCAAAAGCGAATCTCTAAGGAGAAGGGGAAGTGGGGCAGGGTCCCC
TGGGAAGGAAGGAACCCATGCCACCTGTGCCTCAGAAGAGGGTGGCACTGAGAGCTCAGAGAGTGGCTCA
TCCTGCAGCCTCTCAGTGTGACTCTACCCCTGATGTGAACAGTCTCCTCGGGCAAACGCCGGGCCA
AGGCGGGGAGCCGCTCCCGCAACAGTACTCTCACGTCCCTGTGCGTGTGCTCAGCCACTACCCCTTCTTCTC
CACCTTCCGAGAGTGTGTATACTCTCAAGCGCTGGTGGACTGCTGTAGTGAGCGCTTCTGGGCAAG
AACTGGGCATCCCTCGAGGCGTACAAAGGACACCATGTGGCGGATCTTACTGGATCGCTGCTGGTAG
AGGAGAAGTCAAGTGCCTTCTGCATGACCTTCGAGAGATTGAGGCTGGATCTATCGATTGCTGCGCTC
CCCAGTACCCGTCTTGGCAGAAGCGAGTAGACATCGAGTCTACCCCAAGAGCTCCAGCCAGCTCTG
ACCTTTGCTCTTCCAGACCCATCTCGATTACCCCTAGTGGATTTCCCACTGCACCTTCCCTGGAACCTC
TAGGTGTGGACGCTGTCTCCAGGTGCTAACCTGCATTCTGTTAGAGCACAAGGTGGTGTACAGTCCCG
AGACTACAATGCACTCTCCATGTCTGTGATGGCATTCTGGCAATGATCTACCCACTGGAGTATATGTTT
CCTGTCATCCCGCTGCTACCCACCTGCATGGCATCAGCAGAGCAGCTGCTGTTGGCTCCAACCCCGTACA
TCATTGGGGTTCCTGCCAGCTTCTTCTCTACAACTGGACTTCAAAATGCCTGATGATGTATGGCTAGT
GGATCTGGACAGCAATAGGGTATTGCCCCACCAATGCAGAAGTGTGCCTATCCTGCCAGAACCAGAA
TCACTAGAGCTGAAAAAGCATTTAAAGCAGGCCTTGGCCAGCATGAGTCTCAACACCCAGCCCATCTCA
ATCTGGAGAAATTCATGAGGGCCAGGAGATCCCCCTTCTTGGGAAGGCTTCTAATGACCTGCAGTC
CACACCGTCCACTGAATCAACCCACTCATCTATGGCAATGATGTGGATTCTGTGGATGTTGCAACCAGG



[View online »](#)

GTTGCCATGGTACGGTTCTTCAATTCCGCCAACGTGCTGCAGGGATTTTCAGATGCACACGCGTACCCTGC
 GCCTCTTTCCTCGGCCTGTGGTAGCTTTTCAAGCTGGCTCCTTTCTAGCCTCACGTCCCCGGCAGACTCC
 TTTTGCCGAGAAATTGGCCAGGACTCAGGCTGTGGAGTACTTTGGGGAATGGATCCTTAACCCACCAAC
 TATGCCTTTCAGCGAATTCACAACAATATGTTTGTATCCAGCCCTGATTGGTGACAAGCCAAAGTGGTATG
 CTCATCAGCTGCAGCCTATCCACTATCGCGTCTATGACAGCAATCCCAGCTGGCTGAGGCCCTGAGTGT
 ACCACCAGAGCGGACTCTGACTCCGAACCTACTGATGATAGTGGCAGTGATAGTATGGATTATGACGAT
 TCAAGCTCTTCTACTCCTCCCTTGGTGACTTTGTGTCAGTGAATGATGAAATGTGACATTAATGGTGATA
 CTCCCAATGTGGACCCTCTGACACATGCAGCACTGGGGGATGCCAGCGAGGTGGAGATTGACGAGCTGCA
 GAATCAGAAGGAAGCAGAAGAGCCTGGCCAGACAGTGAGAACTCTCAGGAAAACCCCCACTGCGCTCC
 AGCTCTAGCACCACAGCCAGCAGCAGCCCCAGCACTGTCTACACGGAGCCAACTCTGAACCTGCTGACT
 CTACGGAGATGGATGATAAGGCAGCAGTAGGCGTCTCCAAGCCCCCTCCCTCCGTGCCTCCAGCATTGG
 CAAATCGAACGTGGACAGACGTAGGCAGAAATGGAGAGGGGGCTCAAAGCTGCTGCGGCCAACAGC
 TTGAGACTGGCAAGTACTCAGATGCAGAGTCACTCTCGGGCAAGCTCTCCAACTCCACCGTCTCCA
 ACACCAGCACCAGGGCTTCGGGGGCATCATGTCTTTGCCAGCAGCCTCTATCGGAACCACAGTACCAG
 CTTTCAGTCTTTCAAACCTCACACTGCCACCAAAGGTGCCGAGAGAAGGCCACGCCCTTCCCCAGTCTG
 AAAGGAAACAGGAGGGCGTTAGTGGATCAGAAGTCATCTGTCTTAACACAGCCCAACAGTGAAAAGAG
 AACCTCCATCACCCAGGGTCGATCCAGCAATTCTAGTGAGAACCAGCAGTTCCTGAAGGAGGTGGTGCA
 CAGCGTCTGGACGGCCAGGGAGTTGGCTGGCTCAACATGAAAAAGGTGCGCCGGCTGCTGGAGAGCGAG
 CAGCTGCGAGTCTTTGTCTGAGCAAGCTGAACCCGATGGTGCAGTCAAGGACGATGCCCGGCAGGACA
 TCATCCCGGATGTGGAGATCAGTCGGAAGGTGTACAAGGGAATGTTAGACCTCCTCAAGTGTACAGTCT
 CAGCTTGGAGCAGTCTATGCCACGCGGGTCTGGGTGGCATGCCAGCATCTTTGGGCTTTTGGAGATT
 GCCCAGACCCACTACTATAGTAAAGAACCAGACAAGCGGAAGAGAAGTCCAACAGAAAGTGTAAATCCC
 CAGTTGGCAAGGATCCTGGCCTAGTGGCGGGGGACCCAAAGGCTATGGCACAAGTGTAGAGTTCCACA
 ACTGGGACCTCGGGCACCAAGTGCACAGGAAAGGGTCCCTAAGGAACTGGACACCAAGATTTAAAGGAA
 GAAAAATTTATAGCATCTATTGGCCTGAAGTAATCAAACCTGTCTTTGACCTTGGTGAGACAGAGGAGA
 AAAAGTCCAGATCAGCGCAGACAGTGGTGTGAGCCTGACGTCTAGTTCCAGAGGACTGATCAAGACTC
 TGTCTCGGCGTGTGAGTCCAGCTGTTATGATCCGCAGCTCAAGTCAGGATTCTGAAGTGTGATAGTCTCT
 GGAGAGACCCTTGGAGCTGACAGTACTTGGAGCAATGCAGGTGATGGACCAGGTGGCGAGGGCAGTG
 TTCACCTGGCAAGCTCTCGGGCACTTTGTCTGATAGTGAATTTGAGACCACTCTGCCACAAGCACCAT
 CTTTGGTAAAGCCACAGCTTGAAGCCAAGCATAAAGGAGAAGCTGGCAGGCAGCCCATTCGACTTCT
 GAAGATGTGAGCCAGCGAGTCTATCTCTATGAGGGACTCTAGGCAAAGCGTTCCTACTTTATGGGACC
 AAATGCAATTCTGGGAAGATGCCTTCTTAGATGCTGTGATGTTGGAGAGAGAAGGGATGGGTATGGACCA
 GGGTCCCCAGGAAATGATCGACAGGTACCTGTCCCTTGGAGAACATGACCAGGAGCGCTGGAAGATGAT
 GAAGATCGCTTGTGGCCACACTTCTGCACAACCTCATCTCCTACATGCTGCTGATGAAGGTAATAAGA
 ATGACATCCGCAAGAAGGTGAGGCGCCTAATGGGAAAGTCGCACATTGGGCTTGTGTACAGCCAGCAAT
 CAATGAGGTGCTTGTATCAGCTGGCGAACCTGAATGGACGCGATCTCTCTATCTGGTCCAGTGGCAGCCGG
 CACATGAAGAAGCAGACATTTGTGGTACATGCAGGACAGATACAACCGGAGATATCTTTTTCATGGAGG
 TGTGCGATGACTGTGTGGTGTTCGTAGTAAATCGGAACAGTGTATGAGCGCTGGTGGTACGAGAAGCT
 CATCAACATGACCTACTGTCCCAAGACGAAGGTGTGTCTTGTGGCGTAGAAATGGCTCTGAGACCCAG
 CTCACAAAGTTCTATACTAAAAAGTGTGGGAGCTGTACTACTGTGTGAAGGACAGCATGGAGCGCGCTG
 CCGCCCGACAGCAAAGCATCAAACCCGGACCTGAATTGGGTGGCGAGTTCCTGTGCAGGACCTGAAGAC
 TGGTGAGGGTGGCCTGCTGCAGGTGACCCTGGAAGGATCAACCTCAAATTCATGCACAATCAGGTTTTTC
 ATAGAGCTGAATCACATTAATAAGTGAATACAGTTTCGAGGCGTCTTTGTCTGGAGGAATTTGTTCTCTG
 AAATTAAGAAGTGGTGTGAGCCACAAGTACAAGACCAATGGCCACGAAATCTGCTACTCCGATTATG
 TCTCTTCTGACGTGGTGCAGTTCATAGCAGTGAAGGAGATCTCAGAACCCCGCCCGGCTGTCTCT
 AGC

AGCGGACCGACGCGTACGCGGCCGCTCGAG - GFP Tag - GTTTAA

Protein Sequence: >RG227386 representing NM_001135944
 Red=Cloning site Green=Tags(s)

```

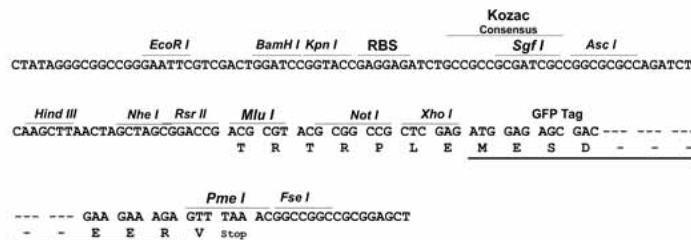
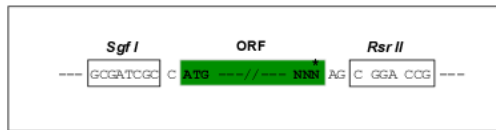
MVQKKKFCPRLLDYLVIIGARHPSSDSVAQTPELLRRYPLEDHTEFFLPPDVVFFCQPEGCLSVRQRMS
LRDDTSFVFTLTDKDTGVTRYGICVNFYRSFQKRISKEKEGGAGSRGKEGTHATCASEEGGTESSESGS
SLQPLSADSTPDVNQSPRGKRRAKAGSRSRNSTLTLSCVL SHYPPFFSTFRECLYTLKRLVDCCSERLLGK
KLGIPRGVQRDTMWRIFTGSLLVEEKSSALLHDLREIEAWIYRLLRSPVPVSGQKRVDIEVLPQELQPAL
TFALPDPSPRFTLVDFPLHLPLELLGVDAQLQVLT CILLEHKVVQLSRDYNALSMSVMAFVAMIYPLEYMF
PVIPLLPCTMASAEQLLLAPTPYIIGVPASFFLYKLDKMPDDVWLVDLDSNRVIAPTNAEVLPIPEPE
SLELKKHLKQALASMSLNTQPILNLEKFHEGQEIPLLLGRPSNDLQSTPSTEFNLIYGNVDVSDVATR
VAMVRRFNSANVLQGFQMHTRTLRLFPRPVVAFQAGSFLASRPRQTPFAEKLARTQAVEYFGEWILNPTN
YAFQRIHNNMFDPALIGDKPKWYAHQLQPIHYRVYDSNSQLAEALSVPPERDSDEPTDSDSGSDSMDYDD
SSSSYSSLGDFVSEMMKCDINGDTPNVDPLTHAALGDASEVEIDELQNQKEAEEP GPDSSENSQENPLRS
SSSTTASSPSTVIHGANSEPADSTEMDDKAAVGVSKPLPSVPPSIGKSNVDRRQAEIGEGAQKLLRPN
LRLASDSDAE SDRASSPNSTVSNSTSTEGFGGIMSFASSLYRNHSTSFSLSNLTLPTKGAREKATPFPSL
KGNRRALVDQKSSVIKHSPTVKREPPSPQGRSSNSSENQQFLKEVVHVSVDGQGVWLNMMKVRRLLESE
QLRVFVLSKLNRMVQSEDDARQDIIPDVEISRKVKYKMLDLLKCTVL SLEQSYAHAGLGGMASIFGLLEI
AQTHYYSKEPDKRKRSPTESVNTPVGKDPGLAGRGDPKAMAQLRVPQLGPRASATGKGPKELDTRSLKE
ENFIASIGPEVIKPVFDLGETEEKKSQISADSGVSLTSSSQRDQDSVIGVSPAVMIRSSSQDSEVSNS
GETLGADSDLSSNAGDGPGGEGSVHLASSRGTLS DSEIETNSATSTIFGKAHSLKPSIKELAGSPIRTS
EDVSRVYLYEGLLGKERSTLWDQMFWEDAF L DAVMLEREGMGMDQGPQEMIDRYLSLGEHDRKLEDD
EDRLLATLLHNLISYMLLMKVNKNDIRKKVRRLMGKSHIGLVYSQQINEVLDQLANLNGRDL SIWSSGSR
HMKKQTFVVHAGTDTNGDIFFMVVCDDCVLRSNIGTVYERWWYEKLINMTYCPKTKVLCWRRNGSETQ
LNKFYTKKRELYYCVKDSMERAARQSQSIKPGPEL GGEFPVQDLKTGEGGLLQVTLLEGINLKFMHNQVF
IELNHIKKCNTRVGVFVLEEFVPEIKEVVS HKYKTPMAHEICYSVLC LFSYVAAVHSSEEDLRTPPRPVS
S
  
```

SGPTRTRRLE - GFP Tag - V

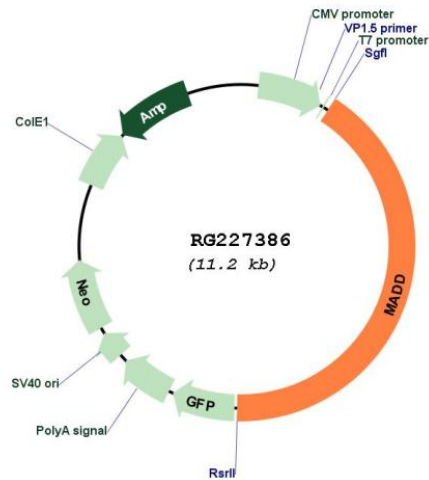
Restriction Sites: SgfI-RsrII

Cloning Scheme:

Cloning sites used for ORF Shuttling:



Plasmid Map:



ACCN: NM_001135944

ORF Size: 4623 bp

OTI Disclaimer: The molecular sequence of this clone aligns with the gene accession number as a point of reference only. However, individual transcript sequences of the same gene can differ through naturally occurring variations (e.g. polymorphisms), each with its own valid existence. This clone is substantially in agreement with the reference, but a complete review of all prevailing variants is recommended prior to use. [More info](#)

OTI Annotation: This clone was engineered to express the complete ORF with an expression tag. Expression varies depending on the nature of the gene.

Components: The ORF clone is ion-exchange column purified and shipped in a 2D barcoded Matrix tube containing 10ug of transfection-ready, dried plasmid DNA (reconstitute with 100 ul of water).

Reconstitution Method:

1. Centrifuge at 5,000xg for 5min.
2. Carefully open the tube and add 100ul of sterile water to dissolve the DNA.
3. Close the tube and incubate for 10 minutes at room temperature.
4. Briefly vortex the tube and then do a quick spin (less than 5000xg) to concentrate the liquid at the bottom.
5. Store the suspended plasmid at -20°C. The DNA is stable for at least one year from date of shipping when stored at -20°C.

RefSeq:	<u>NM_001135944.1, NP_001129416.1</u>
RefSeq Size:	5713 bp
RefSeq ORF:	4626 bp
Locus ID:	8567
UniProt ID:	<u>Q8WYG6</u>
Cytogenetics:	11p11.2
Protein Families:	Druggable Genome
Gene Summary:	<p>Tumor necrosis factor alpha (TNF-alpha) is a signaling molecule that interacts with one of two receptors on cells targeted for apoptosis. The apoptotic signal is transduced inside these cells by cytoplasmic adaptor proteins. The protein encoded by this gene is a death domain-containing adaptor protein that interacts with the death domain of TNF-alpha receptor 1 to activate mitogen-activated protein kinase (MAPK) and propagate the apoptotic signal. It is membrane-bound and expressed at a higher level in neoplastic cells than in normal cells. Several transcript variants encoding different isoforms have been described for this gene. [provided by RefSeq, Jul 2008]</p>