

## Product datasheet for **RG227380**

### **PALM3 (NM\_001145028) Human Tagged ORF Clone**

#### **Product data:**

Product Type:	Expression Plasmids
Product Name:	PALM3 (NM_001145028) Human Tagged ORF Clone
Tag:	TurboGFP
Symbol:	PALM3
Mammalian Cell Selection:	Neomycin
Vector:	pCMV6-AC-GFP (PS100010)
E. coli Selection:	Ampicillin (100 ug/mL)



[View online »](#)

ORF Nucleotide  
Sequence:

>RG227380 representing NM\_001145028  
Red=Cloning site Blue=ORF Green=Tags(s)

TTTTGTAATACGACTCACTATAGGGCGGCCGGGAATTCGTCGACTGGATCCGGTACCGAGGAGATCTGCC  
GCC**CGGATCGCC**

ATGGCGGAGAGCTCCCTCTACCGCAGCGGCTAGAAGTCATCGCTGAGAAGCGGGCGGCTGCAGGAGGAGA  
TCCGCGCCGCGCGCCGGGAGGTGGAGGAGGAGAACTCCGCGTGGAGCGTCTCAAGAGGAAGTCTCTCCG  
GGAACGTTGGCTAATGGATGGGGCAGCTGCAGTCCAGGCCATCCGAAGACCCACCTCGAAGGACCC  
CAGTCACCCGAGGGCCAGGCTCAGGCCGAATCCGGAACCTGGAAGACAGTTTGTTCACACTCCAGTCCC  
AGCTGCAACTGTTGCAAAGTGCTTCCACAGGTGCCAGCACAAGCCCTCAGGCAGGCCAGCTGGCGCAG  
ACAGGGTCACCGTCTCTCTCCAGTCCATTGTCGAGGCAGGTTCTGTAGGCCAGACTGATCTGAACAAG  
AGAGCCTCCCTGCCGGCTGGACTAGTGGGCACGCCTCCAGAGTCCCCTCTGAGCCCAGGGAGGATGTCT  
TGGGGTTTCTGCCAGGCCGAGGCAGGTCCCCGGGGCAGCAGGAGACTCCTCAGAAGCCAATGGCCCATG  
CCCCAGCCCCATCCCCTCCAGAGCAGGGGCTAAGTCAGAGGGCAGTCCATCCGAAGGGCGGGTGGGT  
GAGGCCAAAGGAGGGGGCGTGGTGTGGTGTGGGAAGGGCTGAGGGCCACAGAGGACTGTGCCACAG  
GGCCACGGGCCCGAGCTGGAGGCTAAGGTGGAGGAAGTGGTGTGGAAGCCATCGGAGACAGGAAGGG  
AGCTGGTAGCCTGGAGCTCCCGGCTGGGTGAAGGAGGACAGGGGCATCGTGGAGGTGGTCTGGGAGGGG  
GTGGGTGGCAGTATGCAGAGGCCATGGGGGAGATAGGCAGGGTCCCTGAGGTCGTGCAGACTAGCTCGC  
CTAGGCTCCAGGAGAGATTAGAGGCAGCAGCTTCATAGAAGGGGAAGATGTGCCCCAGGGCAGCCCTGA  
GGGTGATGGGCAGGGAGGCTCTGGAGGAGAGGAGGATCCTTCATTTGGGTGGAGAGTGAACCTCAGT  
GAAGAGTGGGAGGAGTGTCTGGTGGAGGGTTGGAAGGGCCGAGGTGGCAGGGAGGGAGAGAGAGATG  
AAAGCCCCTGGGGCCGAGGGGCAAGACGGGAGGAGCGAGGAGACCTGGGAGGCAGAGAAGAGAAA  
AGCGGAAGAATCCATGGGAATAGGAAGTGAAGAAAAGCCAGGGACAGGGAGGGATGAAGCGGAGATGTCA  
CCAGTGGTAGAGAGGAAAGGAGGAGAGAAGAAGTTGGAGCTGGAGAGCAGAGGAAGTGCAGAAAAGCTGG  
GAACAGAGAGGGAAGGAGGTGAGGAACCACTGGGCATAGAGAGAAAAGTTGAGGGACATTTGAGGGCAGA  
GAAGGAAGGAGATGAGGAAAAGCGAGGGGAGAGGAGGAGGAGTGAAGAACCATTGGGAGTAGAGAAG  
AAAGGAGGTGAGGAAGAGCCAGAGGCAACCAAGAACCACTGGAGGCAGAGAGAAAAGGGAGGGGAGGAGA  
CACTGGAGGCAGAGAAAAGGGGAGGTGAGGAATCATTGGAGACAGAGAAGACCAAGGGACGGAGGGAGA  
TCTGAATCTAGAACAAGGTCTAGGGAAGGAAGTGAATCCAGGCAGAGGAGATGAATGAGGCAGGGCCT  
CCCCTTAGGCTAACACGGAGACAAGGCCAGAGAAGGAAGGACCCAGCCCAGGAGAAGCCAGTAGGAG  
CCCTGGAGGAGGAAGGAGTGAAGCCCCAAACCGCTGCTGAGGGCCAAGGCCCTTGGGGGATGCCACACC  
TCTTCTGGCAGAGACCCAGCCCAGAGCAGCCCGCCGAATGCCAGCCTGCTTCAAGGGGAGGGGCC  
AGCGCAAACCCAGTGCCACCTGTGCCACCTACGCGCCTGCCCGGCAGCCTGAGCCATCTGCCCCCA  
CCGAGGGTGAAGAGGCAAGTGGCCCTAAGCAAAAGACGTGCCAGTGTGTGCGGTCATG

**ACGCGT**ACGCGGGCCGCTCGAG - GFP Tag - GTTTAA

**Protein Sequence:** >RG227380 representing NM\_001145028  
Red=Cloning site Green=Tags(s)

MAESSLYRQRLEVIAEKRRQLQEEIRAARREVEEELRVERLKRKSLRERWLMDGAAAVPEPSEDPTSKDP  
 QSPGQQAQARIRNLEDSLFTLQSQLQLLSASTGAQHKPSGRPSWRRQGHRPLSQSIVEAGSVGQTDLNK  
 RASLPAGLVGTTPPEPSPREDVLFGLPGPRQVPGAAGDSSEANGPCPSPIPTPEQGLSQRAPVSEGRVG  
 EAKGGGVVSVVWEGLRATEDCATGATGPELEAKVEEVVLEAIGDRKGAGSLELPAWVKEDRGIVEVVWEG  
 VGGSDAEAMGEIGRVPEVVQTSSPRLQERLEAAAASIEGEDVPQGSPEGDGQGGSGGEEGFSFIWVERVTL  
 EEWEELLVEGLEPVEVAGRERGDDESPLGAEAKTGGGEETWEAEKRKAEE SMGIGSSEEKPGTGRDEAEMS  
 PVVERKGGKLELESRGSAEKLGTEREGGEEPLGIERKVEGHLRAEKEGDEEKRAEEEEVEEPLGVEK  
 KGGEEPEATKEPLEAERKGGEELEAEKRGGEESLETEKTQGTGDLNLEQGSREGSESQAEMNEAGP  
 PLEANTETRPEKEGPQPEKPVGALEEEVGPQTAAEQGGLGDATPLLAETPAPEQPAECQPLLQGE  
 SANPSAHPVPTYAPARQPEPSAPTEGEEASGPKQKTCQCCAVM

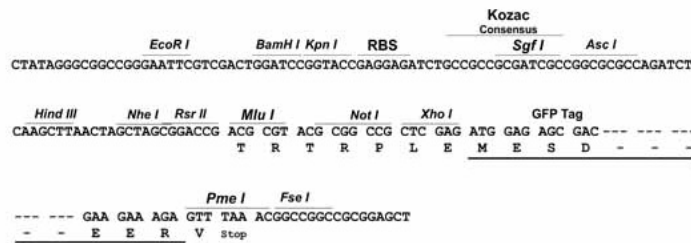
TRTRPLE - GFP Tag - V

**Restriction Sites:**

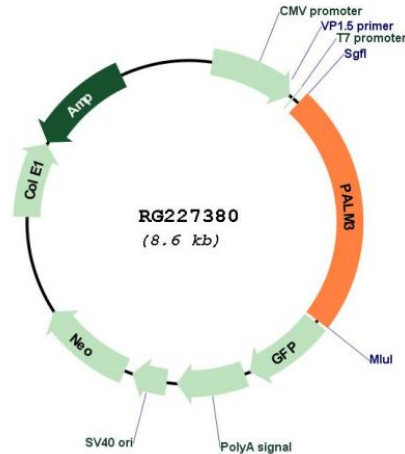
SgfI-MluI

**Cloning Scheme:**

Cloning sites used for ORF Shuttling:



## Plasmid Map:



ACCN: NM\_001145028

ORF Size: 2019 bp

OTI Disclaimer: The molecular sequence of this clone aligns with the gene accession number as a point of reference only. However, individual transcript sequences of the same gene can differ through naturally occurring variations (e.g. polymorphisms), each with its own valid existence. This clone is substantially in agreement with the reference, but a complete review of all prevailing variants is recommended prior to use. [More info](#)

OTI Annotation: This clone was engineered to express the complete ORF with an expression tag. Expression varies depending on the nature of the gene.

Components: The ORF clone is ion-exchange column purified and shipped in a 2D barcoded Matrix tube containing 10ug of transfection-ready, dried plasmid DNA (reconstitute with 100 ul of water).

Reconstitution Method:

1. Centrifuge at 5,000xg for 5min.
2. Carefully open the tube and add 100ul of sterile water to dissolve the DNA.
3. Close the tube and incubate for 10 minutes at room temperature.
4. Briefly vortex the tube and then do a quick spin (less than 5000xg) to concentrate the liquid at the bottom.
5. Store the suspended plasmid at -20°C. The DNA is stable for at least one year from date of shipping when stored at -20°C.

RefSeq: [NM\\_001145028.1](#), [NP\\_001138500.1](#)  
RefSeq Size: 2260 bp  
RefSeq ORF: 2067 bp  
Locus ID: 342979  
UniProt ID: [A6NDB9](#)  
Cytogenetics: 19p13.12  
Gene Summary: ATP-binding protein, which may act as a adapter in the Toll-like receptor (TLR) signaling.  
[UniProtKB/Swiss-Prot Function]