

Product datasheet for **RG227375**

TMEM25 (NM_001144034) Human Tagged ORF Clone

Product data:

Product Type: Expression Plasmids
Product Name: TMEM25 (NM_001144034) Human Tagged ORF Clone
Tag: TurboGFP
Symbol: TMEM25
Mammalian Cell Selection: Neomycin
Vector: pCMV6-AC-GFP (PS100010)
E. coli Selection: Ampicillin (100 ug/mL)
ORF Nucleotide Sequence: >RG227375 representing NM_001144034
Red=Cloning site Blue=ORF Green=Tags(s)

TTTTGTAATACGACTCACTATAGGGCGGCCGGAATTCGTCGACTGGATCCGGTACCGAGGAGATCTGCC
GCC**CGATCGCC**

ATGGCGCTGCCTCCAGGCCAGCCGCCCTCCGGCACACTGCTGCTCCTGCCAGCCCTTCTGAGCTCAG
GTTGGGGGAGTTGGAGCCACAAATAGATGGTCAGACCTGGGCTGAGCGGGCACTTCGGGAGAATGAACG
CCACGCCCTTCACTGCCGGTGGCAGGGGGCCCTGGCACCCCAAGATTGGCCTGGTATCTGGATGGACAG
CTGCAGGAGGCCAGCACCTCAAGACTGCTGAGCGTGGGAGGGGAGGCCTTCTCTGGAGGCCAGCACCT
TCACTGTCACTGCCATCGGGCCAGCATGAGCTCAACTGCTCTCTGCAGGACCCAGAAGTGGCCGATC
AGCCAACGCCTCTGTATCCTTAATGTGAATCAAGCCAGAGATTGCCCAAGTCGGCGCCAAGTACCAG
GAAGCTCAGGGCCAGGCCTCCTGGTTGTCTGTTTGGCCCTGGTGCCTGCAACCCGCGCCAATGTCA
CCTGGATCGACCAGGATGGGCCAGTACTGTCAACACCTCTGACTTCTGGTGTGGATGCGCAGAATA
CCCCTGGCTCACCAACCACCGTGCAGCTGCAGCTCCGAGCCCTGGCACACAACCTCTCGGTGGTGGCC
ACCAATGACGTGGGTGTACCAGTGCCTCGCTCCAGCCCAAGGCCCTCCCGGCACCCATCTCTGATAT
CAAGTACTCCAACAACCTAAACTCAACAACGTGCGCCTGCCACGGGAGAACATGTCCCTCCCGTCCAA
CCTTCAGCTCAATGACCTCACTCCAGATTCCAGAGCAGTAAACCAGCAGACCGGCAGATGGCTCAGAAC
AACAGCCGGCCAGAGCTTCTGGACCCGAGCCCGCGGCCTCCTCACCAGCCGAGTTTCATCCGCCTCC
CAGTGTGGGCTATATCTATCGAGTGTCCAGCGTGCAGTGCAGTGCAGTGCAGTGCAGTGCAGTGCAGT

ACGCGTACGCGGCCGCTCGAG - GFP Tag - GTTTAA



[View online »](#)

Protein Sequence: >RG227375 representing NM_001144034
 Red=Cloning site Green=Tags(s)

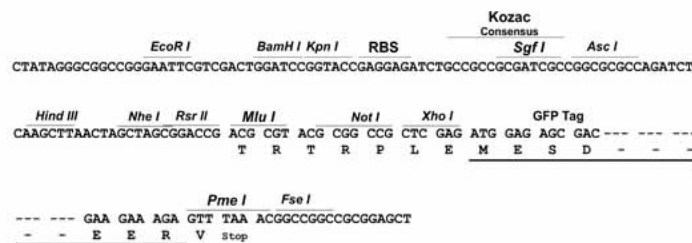
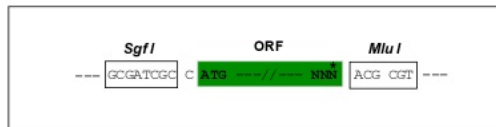
MALPPGPAALRHTLLLLPALLSSGWGELEPQIDGQTTWAERALRENERHAFTRVAGGPGTPRLAWYLDGQ
 LQEASTSRLLSVGGAEFSGGTSTFTVTAHRAQHELNCSLQDPRSGRSANASVILNVQFKPEIAQVGAKYQ
 EAQGPGLLVVLFALVRANPPANVTWIDQDGPVTVNTSDFLVLDAQNYPWLTNHTVQLQLRSLAHNLSVVA
 TNDVGVTSASLPAPGSPRHPSLISSDSNLKLNNVRLPRENMSLPSNLQLNDLTPDSRAVKPADRQMAQN
 NSRPELLDPEPGLLTSRGFIRLPVLYIYRVSSVSSDEIWL

TRTRPLE - GFP Tag - V

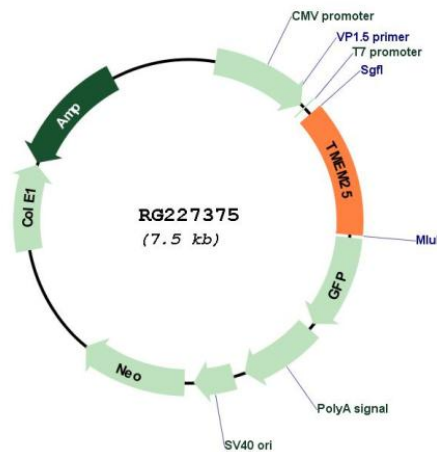
Restriction Sites: SgfI-MluI

Cloning Scheme:

Cloning sites used for ORF Shutting:



Plasmid Map:



ACCN: NM_001144034

ORF Size: 966 bp

OTI Disclaimer:	<p>Due to the inherent nature of this plasmid, standard methods to replicate additional amounts of DNA in E. coli are highly likely to result in mutations and/or rearrangements. Therefore, OriGene does not guarantee the capability to replicate this plasmid DNA. Additional amounts of DNA can be purchased from OriGene with batch-specific, full-sequence verification at a reduced cost. Please contact our customer care team at custsupport@origene.com or by calling 301.340.3188 option 3 for pricing and delivery.</p> <p>The molecular sequence of this clone aligns with the gene accession number as a point of reference only. However, individual transcript sequences of the same gene can differ through naturally occurring variations (e.g. polymorphisms), each with its own valid existence. This clone is substantially in agreement with the reference, but a complete review of all prevailing variants is recommended prior to use. More info</p>
OTI Annotation:	<p>This clone was engineered to express the complete ORF with an expression tag. Expression varies depending on the nature of the gene.</p>
Components:	<p>The ORF clone is ion-exchange column purified and shipped in a 2D barcoded Matrix tube containing 10ug of transfection-ready, dried plasmid DNA (reconstitute with 100 ul of water).</p>
Reconstitution Method:	<ol style="list-style-type: none">1. Centrifuge at 5,000xg for 5min.2. Carefully open the tube and add 100ul of sterile water to dissolve the DNA.3. Close the tube and incubate for 10 minutes at room temperature.4. Briefly vortex the tube and then do a quick spin (less than 5000xg) to concentrate the liquid at the bottom.5. Store the suspended plasmid at -20°C. The DNA is stable for at least one year from date of shipping when stored at -20°C.
RefSeq:	<p>NM_001144034.1, NP_001137506.1</p>
RefSeq Size:	<p>2419 bp</p>
RefSeq ORF:	<p>969 bp</p>
Locus ID:	<p>84866</p>
UniProt ID:	<p>Q86YD3</p>
Cytogenetics:	<p>11q23.3</p>
Protein Families:	<p>Transmembrane</p>
Gene Summary:	<p>In neurons, modulates the degradation of NMDA receptor GRIN2B subunit. Plays a role in the regulation of neuronal excitability.[UniProtKB/Swiss-Prot Function]</p>