

Product datasheet for **RG227357**

NCR3 (NM_001145466) Human Tagged ORF Clone

Product data:

Product Type: Expression Plasmids
Product Name: NCR3 (NM_001145466) Human Tagged ORF Clone
Tag: TurboGFP
Symbol: NCR3
Synonyms: 1C7; CD337; LY117; MALS; NKp30
Mammalian Cell Selection: Neomycin
Vector: pCMV6-AC-GFP (PS100010)
E. coli Selection: Ampicillin (100 ug/mL)
ORF Nucleotide Sequence: >RG227357 representing NM_001145466
Red=Cloning site **Blue**=ORF **Green**=Tags(s)

TTTTGTAATACGACTCACTATAGGGCGGCCGGAATTCGTCGACTGGATCCGGTACCGAGGAGATCTGCC
GCC**CGATCGCC**

ATGGCCTGGATGCTGTTGCTCATCTTGATCATGGTCCATCCAGGATCCTGTGCTCTCTGGGTGTCCAGC
CCCCTGAGATTCGTACCCTGGAAGGATCCTCTGCCTTCTGCCCTGTCTTCAATGCCAGCAAGGGAG
ACTGGCCATTGGCTCCGTCACGTGGTCCGAGATGAGGTGGTCCAGGGAAGGAGGTGAGGAATGGAACC
CCAGAGTTCAGGGCCGCTGGCCCCACTTGTCTTCCCGTTTCTCCATGACCACCAGGCTGAGCTGC
ACATCCGGGACGTGCGAGGCCATGACGCCAGCATCTACGTGTGCAGAGTGGAGGTGCTGGGCCTTGGTGT
CGGGACAGGGAATGGGACTCGGCTGGTGGTGGAGAAAGAACATCCTCAGCTAGGGGCTGGTACAGTCTCT
CTCCTTCGGGCTGGATTCTATGCTGTGACGCTTCTCTGTGGCCGTGGGCAGCACCGTCTATTACCAGG
GCAAAATGCCAAATCTACTCTCTCCGATTCCCCCAACTC

ACGCGTACGCGGCCGCTCGAG - GFP Tag - GTTTAA

Protein Sequence: >RG227357 representing NM_001145466
Red=Cloning site **Green**=Tags(s)

MAWMLLLILIMVHPGSCALWVSQPPEIRTLEGSSAFLPCSFNASQGR LAIGSVTWFRDEVVPGKEVRNGT
PEFRGRLAPLASSRFLHDHQAEHLHIRDVRGHDASIIYVCRVEVLGLGVGTGNGTRLVVEKEHPQLGAGTVL
LLRAGFYAVSFLSVAVGSTVYYQGYAKSTLSGFPQL

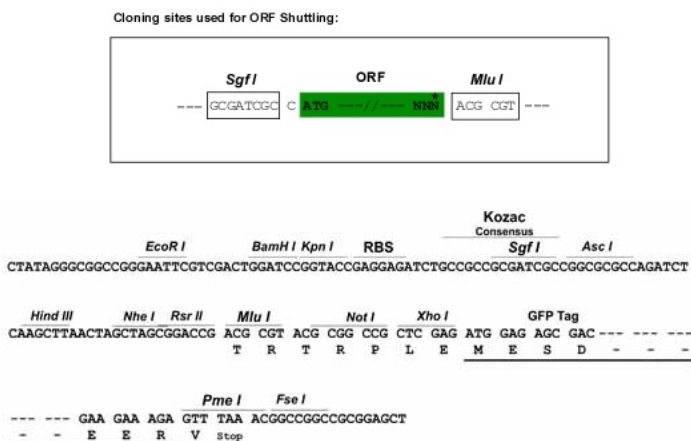
TRTRPLE - GFP Tag - V

Restriction Sites: Sgfl-MluI

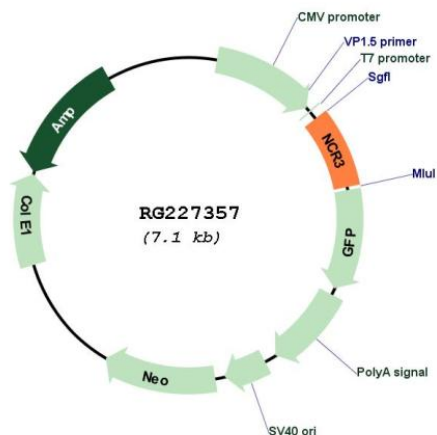


[View online »](#)

Cloning Scheme:



Plasmid Map:



ACCN: NM_001145466

ORF Size: 531 bp

OTI Disclaimer: The molecular sequence of this clone aligns with the gene accession number as a point of reference only. However, individual transcript sequences of the same gene can differ through naturally occurring variations (e.g. polymorphisms), each with its own valid existence. This clone is substantially in agreement with the reference, but a complete review of all prevailing variants is recommended prior to use. [More info](#)

OTI Annotation: This clone was engineered to express the complete ORF with an expression tag. Expression varies depending on the nature of the gene.

| | |
|-------------------------------|---|
| Components: | The ORF clone is ion-exchange column purified and shipped in a 2D barcoded Matrix tube containing 10ug of transfection-ready, dried plasmid DNA (reconstitute with 100 ul of water). |
| Reconstitution Method: | <ol style="list-style-type: none">1. Centrifuge at 5,000xg for 5min.2. Carefully open the tube and add 100ul of sterile water to dissolve the DNA.3. Close the tube and incubate for 10 minutes at room temperature.4. Briefly vortex the tube and then do a quick spin (less than 5000xg) to concentrate the liquid at the bottom.5. Store the suspended plasmid at -20°C. The DNA is stable for at least one year from date of shipping when stored at -20°C. |
| RefSeq: | <u>NM_001145466.2</u> |
| RefSeq Size: | 1109 bp |
| RefSeq ORF: | 534 bp |
| Locus ID: | 259197 |
| UniProt ID: | <u>O14931</u> |
| Cytogenetics: | 6p21.33 |
| Protein Families: | Druggable Genome, ES Cell Differentiation/IPS |
| Protein Pathways: | Natural killer cell mediated cytotoxicity |
| Gene Summary: | The protein encoded by this gene is a natural cytotoxicity receptor (NCR) that may aid NK cells in the lysis of tumor cells. The encoded protein interacts with CD3-zeta (CD247), a T-cell receptor. A single nucleotide polymorphism in the 5' untranslated region of this gene has been associated with mild malaria susceptibility. Three transcript variants encoding different isoforms have been found for this gene.[provided by RefSeq, May 2010] |