

## Product datasheet for **RG227340**

### Prickle (PRICKLE1) (NM\_001144883) Human Tagged ORF Clone

#### Product data:

Product Type:	Expression Plasmids
Product Name:	Prickle (PRICKLE1) (NM_001144883) Human Tagged ORF Clone
Tag:	TurboGFP
Symbol:	PRICKLE1
Synonyms:	EPM1B; RILP
Mammalian Cell Selection:	Neomycin
Vector:	pCMV6-AC-GFP (PS100010)
E. coli Selection:	Ampicillin (100 ug/mL)



[View online »](#)

**ORF Nucleotide Sequence:**

>RG227340 representing NM\_001144883  
 Red=Cloning site Blue=ORF Green=Tags(s)

TTTTGTAATACGACTCACTATAGGGCGGCCGGGAATTCGTCGACTGGATCCGGTACCGAGGAGATCTGCC  
 GCC**GCGATCGCC**

ATGCCTTTGGAGATGGAGCCCAAGATGAGCAAAGTGGCCTTTGGCTGTCAGAGAAGTTCCACATCAGATG  
 ATGACTCTGGCTGTCATTGGAGAGTACGCCTGGGTCCCCCGGCCTGAGACCAGAGCAGATCCAGCT  
 CTATTTTGCTTGCTTACCAGAGGAAAAAGTTCTTACGTTAACAGCCCCGGAGAGAAGCATCGGATTA  
 CAGCTTTTGTACCAGTTACCACCACATGATAATGAGGTACGGTATTGCCAGTCTTTGAGTGAAGAGGAGA  
 AAAAAGAGTTGCAGGTGTTCAAGTCTCAGCGGAAGAAAGAAGCACTGGGAAGAGGAACAATTAAGCTTCT  
 GTCCAGAGCAGTCATGCATGCTGTGTGAGCAGTGTGGTTTGAAGATAAATGGAGGTGAAGTTGCAGTG  
 TTCGCCTCCCGTCCGGCCCTGGTGTGTCTGGCACCCATCCTGTTTTGTCTGTTTACAGTGAATGAGC  
 TGCTGGTCGACCTCATCTATTTTATCAGGATGGAAAAATCACTGTGGCAGGCACCATGCAGAAGTCT  
 CAAACCACGGTGTCTCAGCATGTGACGAGATAATTTTGTCTGATGAGTGCACAGAAGCTGAGGGTCCCAT  
 TGGCACATGAAACACTTCTGCTGCCTTGTGTAACGGTCTGGGAGGACAGAGGTATATCATGAAGG  
 ACGGCCGCCCTTCTGCTGTGGCTGTTTTGAGTCTCTCTATGCGGAGTACTGTGAAACCTGTGGGAAACA  
 TATTGGTGTGGACCATGCACAGATGACCTATGACGGGCAGCACTGGCACGCCACGGAAGCCTGCTTTTCT  
 TGTGCCAGTGTAAAGCCTCTTTGTTGGGATGTCCCTTCCCTCCAAACAGGGTCAAGTTACTGCTCAA  
 AAACGTGCAGTCTTGGTGAAGACGTCCATGCCTCTGATTCTTCCGACTCTGCATTTCACTCAGCTCGATC  
 AAGAGACTCCCGAAGAAGTGTCCGAATGGGCAAGAGCAGCCGGTCAAGCAGATCAGTGTAGACAGTCTCTC  
 CTCTTATCGCCTGCTCTGAACAAGTTTCTGGCCTCTCAGGCAATGCTGATGACACCCCTTTCTCGAA  
 AATTGGATGATCTGAGTCTCCAGACAAGGAACAAGTTTTGCCAGTGAAGAATTTTGGAAAGCCAGAT  
 AGAGCAGGAAACTCCAGAAGACCCTGAAGAATGGGCTGATCATGAAGATTATATGACGCAGCTCCTCCTC  
 AAGTTTGGTGATAAAAAGCCTCTTTCAGCCACAGCCCAATGAGATGGATATTTCGAGCCAGTGAAGTCTGGA  
 TATCTGATAACATGGTTAAAAGTAAAGCCGAGTTAAAGCAAAATAACCAGAGCCTTGCAAGTAAAAAATA  
 CCAGTCTGATATGTACTGGGCACAGTCAACAAGATGGACTGGGCGATTCTGCTTATGGCAGCCACCCAGGC  
 CCTGCAAGCAGTAGAAGGCTTCCAGGAATTGGAAGTGGACCATGGGCTTCCAGGTATAATCATGATGAAA  
 CACAGTGGTATGAAGATCCCTGGAGTGTCTGTCAGACCTGAAACCAGAGCAAAGTGTCCGGGATTCGAT  
 GGATTCTTTGGCATTGTCCAATATCACAGGGGCTTCGGTGGATGGAGAAAACAAGCCAAGGCCATCATTG  
 TATTCTCTGCAAAATTTGAGGAGATGGAAACAGAAGATTGTGAGAAGATGAGCAATATGGGAACCTTGA  
 ACTCTTCCATGCTGCACAGGAGTGCAGAGTCTTAAAGAGTCTAAGTTCAGAGTTGTGTCCAGAGAAAAT  
 CCTGCCTGAAGAGAAGCCAGTACATCTGCCAGTGTCTCAGAAGGTCCAAGTCTCAATCCAGACCCAGCAG  
 GTCAAGTTTTCTGATGATGTCATTGACAATGGGAATGACATTGAAATCCGGCAGCCTCCGATGAGTG  
 AAAGGACTCGGAGACGCTTACAATTTGAAGAGAGGGGATCCAGGTCTCATCACACCACCCGCCGGAG  
 AAGTAGAAAGTCCCGCTCCGACAATGCCCTGAATCTTGTACAGAAAGAAAATACTCTCCAAGGACAGA  
 CTGCGGCTGTACACCCCGATAACTATGAGAAATTTATACAGAATAAAAGTGCACAGGATCCAAGCAT  
 ACATCCAGAATGCTGATCTCTACGGACAGTACGCCATGCCACTCCGATTATGGCCTGCAGAACCCAGG  
 AATGAATCGGTTTCTGGACTCTACGGCAGGATGATGATTCCTGGTGTCTTCTCTCTCTCTCTCTCTCT  
 GACTCGGAAGAAGAAGGATATTTCTTGGACAACCAATCCCTCAACCCCGCCACAGAGATTTTGCCTACT  
 ATACAGATGACCTTTCTAGTCCACCATCTGCACTTCCACCCCTCAGTTTGGTCCAGAGGACAACAAAATC  
 CAAGAAGAAAAAGGGACACAAGGGCAAAAATTGTATTATTCT

AG**GCGACCG**ACGCGTACGCGGCCGCTCGAG - GFP Tag - GTTTAA

**Protein Sequence:** >RG227340 representing NM\_001144883  
 Red=Cloning site Green=Tags(s)

```

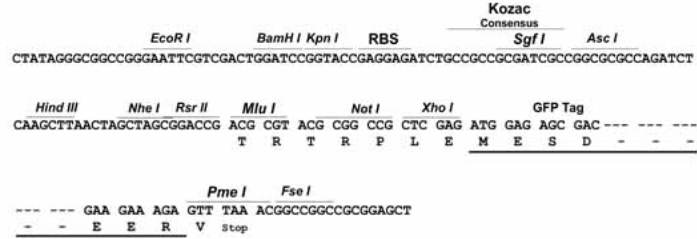
MPLEMEPKMSKLAFGCQRSSTSDDDSGCALEEYAWVPPGLRPEQIQLYFACLPEEKVPYVNSPGEKHKRIK
QLLYQLPPHDNEVRYCQSLSEEEKKELQVFSQRKKEALGRGTIKLLSRAVMHAVCEQCGLKINGGEVAV
FASRAGPGVCWHPSCFVCFNELLVDLIYFYQDGKIHCGRHHAEELLKPRCSACDEIIFADECTEAEGRH
WHMKHFCCLECEETVLGGQRYIMKDGRPFCCGCFESLYAEYCETCGEHIGVDHAQMTYDGGHWHATEACFS
CAQCKASLLGCPFLPKQGQIYCSKTCSLGEDVHASDSSDAFQSARSRDSRRSVRMGKSSRSADQCRQSL
LLSPALNYKFPGLSGNADDTLSRKLDDLSDLRQGTSFASEEFWKGRVEQETPEDPEEWADHEDYMTQLLL
KFGDKSLFQPQPNEMDIRASEHWISDNMVKSKTELKQNNQSLASKKYQSDMYWAQSQDGLGDSAYGSHPG
PASSRRLQELEDHGASGYNHDETQWYEDSLECLSDLKPEQSVRDSMDSLALSNITGASVDGENKPRPSL
YSLQNFEEMETEDCEKMSNMGTLNSSMLHRSAESLKSLSSELCEKILPEEKPVHLPVLRRSKKSQSRPQQ
VKFSDDIVDNGNYDIEIRQPPMSERTRRRVYNFEERGSRSHHRRRRSRKSRSDNALNLVTERKYSKDR
LRLYTPDNYEKFIQNKSAIEIQAYIQNADLYGQYAHATSDYGLQNPGMNRFGLYGEDDDSWCSSSSSSS
DSEEEGYFLGQPIQPRPQRFAYYTDDLSSPPSALPTPQFGQRTTKSKKKKGHKGNKNCIIS
  
```

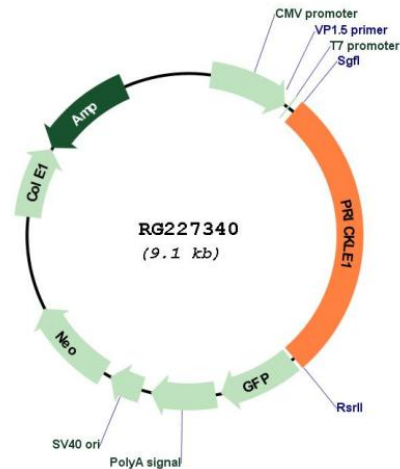
SGPTRRRLE - GFP Tag - V

**Restriction Sites:** Sgfl-RsrII

Cloning Scheme:

Cloning sites used for ORF Shuttling:



**Plasmid Map:**


**ACCN:** NM\_001144883

**ORF Size:** 2493 bp

**OTI Disclaimer:** The molecular sequence of this clone aligns with the gene accession number as a point of reference only. However, individual transcript sequences of the same gene can differ through naturally occurring variations (e.g. polymorphisms), each with its own valid existence. This clone is substantially in agreement with the reference, but a complete review of all prevailing variants is recommended prior to use. [More info](#)

**OTI Annotation:** This clone was engineered to express the complete ORF with an expression tag. Expression varies depending on the nature of the gene.

**Components:** The ORF clone is ion-exchange column purified and shipped in a 2D barcoded Matrix tube containing 10ug of transfection-ready, dried plasmid DNA (reconstitute with 100 ul of water).

**Reconstitution Method:**

1. Centrifuge at 5,000xg for 5min.
2. Carefully open the tube and add 100ul of sterile water to dissolve the DNA.
3. Close the tube and incubate for 10 minutes at room temperature.
4. Briefly vortex the tube and then do a quick spin (less than 5000xg) to concentrate the liquid at the bottom.
5. Store the suspended plasmid at -20°C. The DNA is stable for at least one year from date of shipping when stored at -20°C.

**RefSeq:** [NM\\_001144883.2](#)

**RefSeq Size:** 4250 bp

**RefSeq ORF:** 2496 bp

**Locus ID:** 144165

**UniProt ID:** [Q96MT3](#)

**Cytogenetics:** 12q12

**Protein Families:** Druggable Genome

**Protein Pathways:** Wnt signaling pathway

**Gene Summary:** This gene encodes a nuclear receptor that may be a negative regulator of the Wnt/beta-catenin signaling pathway. The encoded protein localizes to the nuclear membrane and has been implicated in the nuclear trafficking of the transcription repressors REST/NRSF and REST4. Mutations in this gene have been linked to progressive myoclonus epilepsy. Alternate splicing results in multiple transcript variants. A pseudogene of this gene is found on chromosome 3. [provided by RefSeq, Sep 2009]