

Product datasheet for **RG227319**

TTC39A (NM_001144832) Human Tagged ORF Clone

Product data:

Product Type:	Expression Plasmids
Product Name:	TTC39A (NM_001144832) Human Tagged ORF Clone
Tag:	TurboGFP
Symbol:	TTC39A
Synonyms:	C1orf34; DEME-6
Mammalian Cell Selection:	Neomycin
Vector:	pCMV6-AC-GFP (PS100010)
E. coli Selection:	Ampicillin (100 ug/mL)



[View online »](#)

ORF Nucleotide Sequence:

>RG227319 representing NM_001144832
 Red=Cloning site Blue=ORF Green=Tags(s)

TTTTGTAATACGACTCACTATAGGGCGGCCGGAATTCGTCGACTGGATCCGGTACCGAGGAGATCTGCC
 GCC**CGCATCGCC**

ATGGCCTTTCTGACCACCTGGAAGGAGGCGGCCTCCGGAAAAGCGACCGCAGGACTCCTGAGAGCAGCC
 TCCATGAGGCCCTGGACCAGTGCATGACCGCCCTGGACCTCTTCTCACCAACCAGTTCTCAGAAGCACT
 CAGCTACCTCAAGCCCAGAACCAAGGAAAGCATGTACCACTCACTGACATATGCCACCATCCTGGAGATG
 CAGGCCATGATGACCTTTGACCCTCAGGACATCCTGCTTGCCGGCAACATGATGAAGGAGGCACAGATGC
 TGTGTCAGAGGCACCGGAGGAAGTCTTCTGTAACAGATTCTTCCAGCAGCCTGGTGAACCGCCCCACGCT
 GGGCCAATTCACTGAAGAGGAAATCCACGCTGAGGTCTGCTATGCAGAGTGCCTGCTGCAGCGAGCAGCC
 CTGACCTTCTGCAGGACGAGAATGGTGAAGTTCATCAAAGGCGGCATCAAAGTTCGAAACAGCTACC
 AGACCTACAAGGAGCTGGACAGCCTTGTTCAGTCTCACAACTGCAAGGGTGAAGAACCCCGCACTT
 TGAAGGAGGAGTGAAGCTTGGTGTAGGGCCTTCAACCTGACACTGTCCATGCTTCTACTAGGATCCTG
 AGGCTGTTGGAGTTTGTGGGGTTTTTCAGGAAACAAGACTATGGGCTGCTGCAGCTGGAGGAGGGAGCGT
 CAGGGCACAGCTTCCGCTCTGTGCTCTGTGTCATGCTCCTGCTGTGCTACCAACACCTTCTCACCTTCGT
 GCTCGGTACTGGGAACGTCAACATCGAGGAGGCCGAGAAGCTCTTGAAGCCCTACCTGAACCGGTACCCT
 AAGGGTGCCATCTTCTGTTCTTTGACAGGGAGGATTGAAGTCATTAAGGCAACATTGATGCAGCCATCC
 GGCGTTTCGAGGAGTGTGTGAGGCCACGACGACTGGAAGCAGTTCCACCACATGTGCTACTGGGAGCT
 GATGTGGTGTTCACCTACAAGGCCAGTGAAGATGTCTACTTCTACGCCACCTGCTCAGCAAGGAG
 AACTGCTGGTCCAAGGCCACCTACATTTACATGAAGGCCGCTACCTCAGCATGTTTGGGAAGGAGGACC
 ACAAGCCGTTCCGGGACGACGAAGTGAATTATTTTCGAGCTGTGCCAGGCCTGAAGCTCAAGATTGCTGG
 GAAATCTCTACCCACAGAGAAGTTTGCCATCCGGAAGTCCCGGCCGCTACTTCTCCTCCAACCCTATCTCG
 CTGCCAGTGCCTGCTCTGAAATGATGTACATCTGGAACGGCTACGCCGTGATTGGGAAGCAGCCGAAAC
 TCACGGATGGGATACTTGAGATTACTAAGGCTGAAGAGATGCTGGAGAAAGGCCAGAGAACGAGTA
 CTCAGTGGATGACGAGTCTTGGTGAATTGTTGAAAGGCCTGTGCTGAAATACCTGGGCCGTGCCAG
 GAGGCCGAGGAGAAATTTAGGAGCATCTGCCAATGAAAAGAAGATTAATATGACCACTACTTGATCC
 CAAACGCCCTGCTGGAGCTGGCCCTGCTGCTTATGGAGCAAGACAGAAACGAAGAGGCCATCAAATTTT
 GGAATCTGCCAAGCAAACACTACAAGAATTACTCCATGGAGTCAAGGACACACTTTCGAATCCAGGCAGCC
 AACTCCAAGCCAAGTCTTCCCTAGAGAACAGCAGCAGATCCATGGTCTCATCAGTGCCTTG

ACGCGTACGCGGCCGCTCGAG – GFP Tag – GTTTAA

Protein Sequence:

>RG227319 representing NM_001144832
 Red=Cloning site Green=Tags(s)

MAFLTTWKEAASGKSDRRTPESLHEALDQCMTALDLFLTNQFSEALSYLKPRTKESMYHSLTYATILEM
 QAMMTFDPQDILLAGNMKEAQMCLCQRHRRKSSVTDSFSSLVNRPTLGQFTEEEIHAEVCYAECLLQRAA
 LTFLQDENMVSFIKGGIKVRNSYQTYKELDSLQSSQYCKGENHPHFEGGVKLGVGAFNLTL SMLPTRIL
 RLLEFVFGSGNKDYGLLQLEEGASGHSFRSVLCVMLLLCYHTFLTFVLGTGNVNIIEAEKLLKPYLNRYR
 KGAIFFLAGRIEVIKGNIDAAIRRFEECEAQHQHWQFHMMCYWELMWCFTYKQWKMYSFYADLLSKE
 NCWSKATYIYMKAAYLSMFGKEDHKPFGDDEVELFRAVPLKLLIAGKSLPTEKFAIRKSRRYFSSNPIS
 LPVPALEMMYIWNKYAVIGKQPKLTDGILEIITKAEEMLEKGPENEYSVDDECLVKLLKGLCLKYLGRVQ
 EAEENFRSISANEKKIKYDHYLIPNALLELALLLMEQDRNEEAIKLLES AKQNYKNYSMESRTHFRIQAA
 TLQAKSSLENSRSMVSSVSL

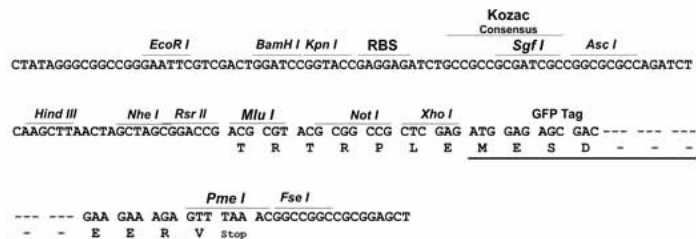
TRTRPLE – GFP Tag – V

Restriction Sites:

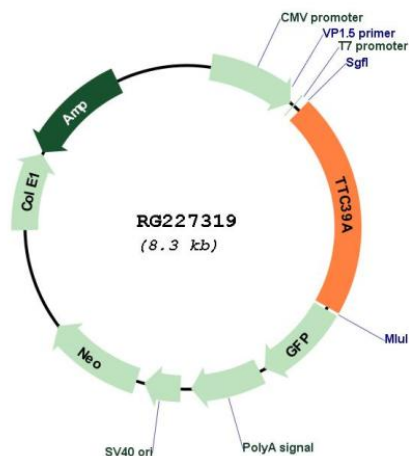
Sgfl-MluI

Cloning Scheme:

Cloning sites used for ORF Shutting:



Plasmid Map:



ACCN: NM_001144832

ORF Size: 1743 bp

OTI Disclaimer:	The molecular sequence of this clone aligns with the gene accession number as a point of reference only. However, individual transcript sequences of the same gene can differ through naturally occurring variations (e.g. polymorphisms), each with its own valid existence. This clone is substantially in agreement with the reference, but a complete review of all prevailing variants is recommended prior to use. More info
OTI Annotation:	This clone was engineered to express the complete ORF with an expression tag. Expression varies depending on the nature of the gene.
Components:	The ORF clone is ion-exchange column purified and shipped in a 2D barcoded Matrix tube containing 10ug of transfection-ready, dried plasmid DNA (reconstitute with 100 ul of water).
Reconstitution Method:	<ol style="list-style-type: none">1. Centrifuge at 5,000xg for 5min.2. Carefully open the tube and add 100ul of sterile water to dissolve the DNA.3. Close the tube and incubate for 10 minutes at room temperature.4. Briefly vortex the tube and then do a quick spin (less than 5000xg) to concentrate the liquid at the bottom.5. Store the suspended plasmid at -20°C. The DNA is stable for at least one year from date of shipping when stored at -20°C.
RefSeq:	NM_001144832.2 , NP_001138304.1
RefSeq Size:	2733 bp
RefSeq ORF:	1746 bp
Locus ID:	22996
UniProt ID:	Q5SRH9
Cytogenetics:	1p32.3