

## Product datasheet for **RG227317**

### FGF1 (NM\_001144892) Human Tagged ORF Clone

#### Product data:

**Product Type:** Expression Plasmids  
**Product Name:** FGF1 (NM\_001144892) Human Tagged ORF Clone  
**Tag:** TurboGFP  
**Symbol:** FGF1  
**Synonyms:** AFGF; ECGF; ECGF-beta; ECGFA; ECGFB; FGF-1; FGF-alpha; FGFA; GLIO703; HBGF-1; HBGF1  
**Mammalian Cell Selection:** Neomycin  
**Vector:** pCMV6-AC-GFP (PS100010)  
**E. coli Selection:** Ampicillin (100 ug/mL)  
**ORF Nucleotide Sequence:** >RG227317 representing NM\_001144892  
 Red=Cloning site Blue=ORF Green=Tags(s)

TTTTGTAATACGACTCACTATAGGGCGGCCGGAATTCGTCGACTGGATCCGGTACCGAGGAGATCTGCC  
GCC**CGATCGCC**

ATGGCTGAAGGGGAAATCACCACCTTCACAGCCCTGACCGAGAAGTTAATCTGCCTCCAGGAATTACA  
AGAAGCCCAAACCTCTACTGTAGCAACGGGGGCCACTTCTGAGGATCCTCCGGATGGCACAGTGGA  
TGGGACAAGGGACAGGAGCGACCAGCACATTAGCTGCAGCTCAGTCCGAAAGCGTGGGGGAGGTGTAT  
ATAAAGAGTACCGAGACTGGCCAGTACTGGCCATGGACACCGACGGGCTTTTATACGGCTCACAGACAC  
CAAATGAGGAATGTTTGTCTGAAAGGCTGGAGGAGAACCATTACAACACCTATATATCCAAGAAGCA  
TGCAAGAGAAGAATTGGTTTGTTCCTCAAGAAGTGGAGCTGCAAACGCGGTCTCGGACTCACTAT  
GGCCAGAAAGCAATCTTGTCTCCCTGCCAGTCTCTTCTGAT

**ACGCGT**ACGCGGCCGCTCGAG - GFP Tag - GTTTAA

**Protein Sequence:** >RG227317 representing NM\_001144892  
 Red=Cloning site Green=Tags(s)

MAEGEITTFALTEKFNLPNGYKPKLLYCSNGGHFLRILPDGTVDGTRDRSDQHILQLLSAESVGEVY  
IKSTETGQYLAMDTDGLLYGSQTPNEECLFLERLEENHYNTYISKKHAENWVGLKKNKSGCKRGRPTHY  
GQKAILFLPLPVSSD

**TRTRPLE** - GFP Tag - V

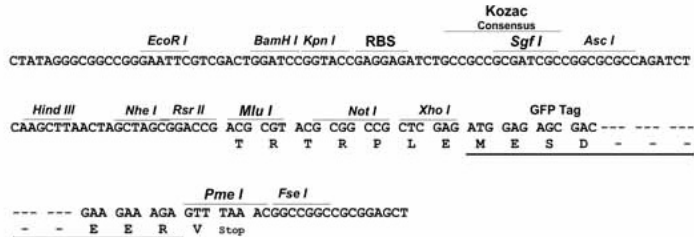
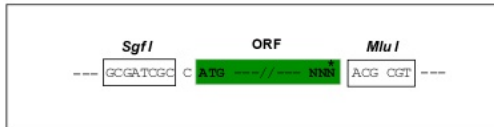
**Restriction Sites:** Sgfl-MluI



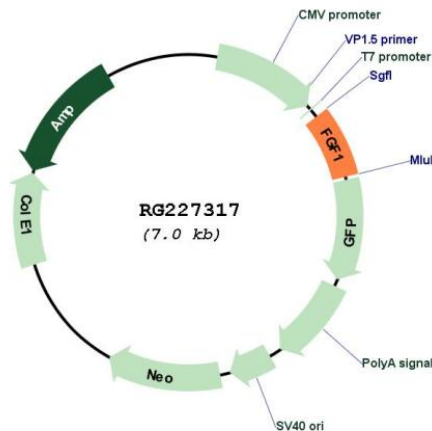
[View online »](#)

**Cloning Scheme:**

Cloning sites used for ORF Shutting:



**Plasmid Map:**



**ACCN:** NM\_001144892

**ORF Size:** 465 bp

**OTI Disclaimer:** The molecular sequence of this clone aligns with the gene accession number as a point of reference only. However, individual transcript sequences of the same gene can differ through naturally occurring variations (e.g. polymorphisms), each with its own valid existence. This clone is substantially in agreement with the reference, but a complete review of all prevailing variants is recommended prior to use. [More info](#)

**OTI Annotation:** This clone was engineered to express the complete ORF with an expression tag. Expression varies depending on the nature of the gene.

|                               |   |
|-------------------------------|---|
| <b>Components:</b>            | The ORF clone is ion-exchange column purified and shipped in a 2D barcoded Matrix tube containing 10ug of transfection-ready, dried plasmid DNA (reconstitute with 100 ul of water).  |
| <b>Reconstitution Method:</b> | <ol style="list-style-type: none"><li>1. Centrifuge at 5,000xg for 5min.</li><li>2. Carefully open the tube and add 100ul of sterile water to dissolve the DNA.</li><li>3. Close the tube and incubate for 10 minutes at room temperature.</li><li>4. Briefly vortex the tube and then do a quick spin (less than 5000xg) to concentrate the liquid at the bottom.</li><li>5. Store the suspended plasmid at -20°C. The DNA is stable for at least one year from date of shipping when stored at -20°C.</li></ol>   |
| <b>RefSeq:</b>                | <a href="#">NM_001144892.3</a>  |
| <b>RefSeq Size:</b>           | 3669 bp   |
| <b>RefSeq ORF:</b>            | 468 bp  |
| <b>Locus ID:</b>              | 2246  |
| <b>UniProt ID:</b>            | <a href="#">P05230</a>  |
| <b>Cytogenetics:</b>          | 5q31.3  |
| <b>Protein Families:</b>      | Druggable Genome, Secreted Protein  |
| <b>Protein Pathways:</b>      | MAPK signaling pathway, Melanoma, Pathways in cancer, Regulation of actin cytoskeleton  |
| <b>Gene Summary:</b>          | The protein encoded by this gene is a member of the fibroblast growth factor (FGF) family. FGF family members possess broad mitogenic and cell survival activities, and are involved in a variety of biological processes, including embryonic development, cell growth, morphogenesis, tissue repair, tumor growth and invasion. This protein functions as a modifier of endothelial cell migration and proliferation, as well as an angiogenic factor. It acts as a mitogen for a variety of mesoderm- and neuroectoderm-derived cells in vitro, thus is thought to be involved in organogenesis. Multiple alternatively spliced variants encoding different isoforms have been described. [provided by RefSeq, Jan 2009] |