

Product datasheet for **RG227291**

TCHP (NM_001143852) Human Tagged ORF Clone

Product data:

Product Type:	Expression Plasmids
Product Name:	TCHP (NM_001143852) Human Tagged ORF Clone
Tag:	TurboGFP
Symbol:	TCHP
Synonyms:	TpMs
Mammalian Cell Selection:	Neomycin
Vector:	pCMV6-AC-GFP (PS100010)
E. coli Selection:	Ampicillin (100 ug/mL)



[View online »](#)

ORF Nucleotide Sequence:

>RG227291 representing NM_001143852
 Red=Cloning site Blue=ORF Green=Tags(s)

TTTTGTAATACGACTCACTATAGGGCGGCCGGGAATTCGTCGACTGGATCCGGTACCGAGGAGATCTGCC
 GCC**GCGATCGCC**

ATGGCGCTCCCGACGCTGCCGTCTACTGGTGCAGCCAGCAGCGCCTGAATCAGCAGCTAGCACGACAGC
 GAGAGCAGGAGGCCGGCTTCGGCAGCAGTGGGAGCAGAACAGCCGTTACTTCAGGATGTCTGACATCTG
 CAGCTCCAAACAGGCAGAATGGAGCTCTAAAACCTCTACCAGCGGAGCATGCATGCCTATCAGCGGGAG
 AAGATGAAGGAGGAGAAGAGGAGGAGTCTGGAGGCCGACGGGAAAAGCTCAGGCAGCTCATGCAGGAGG
 AGCAGGACCTGCTGGCCAGAGAAGTGGAGGAGCTGAGGCTGAGCATGAACTTGCAGGAAAAGAAGAATCCG
 GGAGCAGCACGGGAAGCTGAAATCAGCCAAAGAAGAGCAGAGGAAACTGATTGCTGAACAACTTTTGTAC
 GAACACTGGAAAAAGAACAACCCGAACTTCGAGAGATGGAGCTGGACCTTACCAGAAGCATGTCGTAA
 ACTCTTGGGAAAATGCAGAAAAGAAGAAAAAACAGCAAGAAGCCACCGCAGAGCAAGAGAACAACCGGTA
 TGAATGAATATGAAAGGGCCGAAGGGAGGCGCTAGAAAGGATGAAAGCTGAAGAGGAGAGGAGGCGAG
 CTGGAGGACAAGCTCCAGGCCGAGGCACTGCTGCAACAGATGGAGGAGCTGAAGCTGAAGGAGGTGGAGG
 CGACAAACTAAAGAAGGAGCAGGAGAATCTGTTGAAGCAGCGGTGGGAGCTAGAGAGGCTGGAGGAAGA
 GCGAAAGCAGATGGAAGCCTTCCGGCAGAAGGCAGAGCTGGGCGTTCCTTGGAGACATCAGTATAACGCT
 CAACTCAGCAGACGCACACAGCAGATCCAAGAGGAGCTGGAGGCAGACAGGCGGATCCTGCAGGCCCTCC
 TCGAGAAGGAGGACGAGAGCCAGCGCCTCCACCTGGCCAGGCGGGAGCAGGTGATGGCCGATGTGGCCTG
 GATGAAGCAGGCCATTGAGGAGCAGCTGCAGCTGGAGCGGGCGGGAGGAGCTGCAGATGCTGCTG
 AGGGAGGAGGCCAAGGAGATGTGGAAAAGAGAGAGGCAGAGTGGGCCGAGAGCGCAGCGCACGGGACA
 GACTGATGAGCGAGTTCTGACAGGGAGACAACAGCAAAATACAAGAGAAGATTGAGCAGAACCAGCGGC
 ACAAGAGGAATCCCTGAAACACAGGGAGCAACTTATTCGAAATCTTGAGGAGGTGAGAGAGTTGGCTCGT
 CGCGAGAAAAGAGGAGTGAAGAGCTGAAATCGGCCAGGAAGCAGGAGCTGGAAGCCAGGTTGCAGAGC
 GCCGGCTGCAGGCATGGGAAGCAGACCAGCAGGAGGAGGAAGAGGAGGAGGCCCGCGGGTTCGAGCA
 GCTCTCAGATGCCCTGCTGCAGCAGGAGGCGGAGACTATGGCTGAGCAGGGCTACCGGCCTAAGCCTTAC
 GGACATCCAAAATTGCTTGAAC

ACGCGTACGCGGCCGCTCGAG - GFP Tag - GTTTAA

Protein Sequence:

>RG227291 representing NM_001143852
 Red=Cloning site Green=Tags(s)

MALPTLPSYWCSQQLRNQQLARQREARLRQQWEQNSRYFRMSDICSSKQAEWSSKTSYQRSMHAYQRE
 KMKEEKRRSLEARREKLRLMQEEQDLLARELEELRLSMNLQERRIREQHGLKLSAKEEQRKLIAEQLLY
 EHWKKNPKLREMEDLHQKHVNSWEMQKEEKKQEQEATAEQENKRYENEYERARREALERMKAEEERRQ
 LEDKLQAEALLQQMEELKLKEVEATKLKKEQENLLQRWELERLEEERKQMEAFRQKAEGRFLRHQYNA
 QLSRRTQQIQEELADRRLQALLEKEDESQRLHLARREQVMADVAVMMQAIIEEQLQLERAREAELQMLL
 REEAKEMWEKREAEWARERSARDRLMSEVLTGRQQIQEKEIQNRRAQEESESLKHREQLIRNLEEVRELAR
 REKEESEKLSARKQEAQVAERRLQAWADQQEEEEEEARRVEQLSDALLQQAETMAEQGYRPKPY
 GHPKIAWN

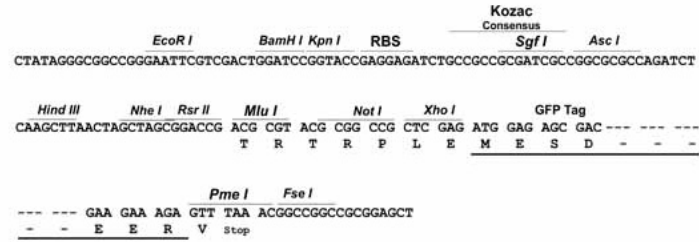
TRTRPLE - GFP Tag - V

Restriction Sites:

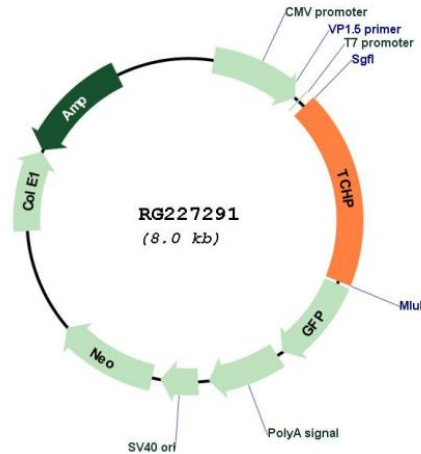
Sgfl-MluI

Cloning Scheme:

Cloning sites used for ORF Shutting:



Plasmid Map:



ACCN: NM_001143852

ORF Size: 1494 bp

OTI Disclaimer: The molecular sequence of this clone aligns with the gene accession number as a point of reference only. However, individual transcript sequences of the same gene can differ through naturally occurring variations (e.g. polymorphisms), each with its own valid existence. This clone is substantially in agreement with the reference, but a complete review of all prevailing variants is recommended prior to use. [More info](#)

OTI Annotation: This clone was engineered to express the complete ORF with an expression tag. Expression varies depending on the nature of the gene.

Components: The ORF clone is ion-exchange column purified and shipped in a 2D barcoded Matrix tube containing 10ug of transfection-ready, dried plasmid DNA (reconstitute with 100 ul of water).

Reconstitution Method:

1. Centrifuge at 5,000xg for 5min.
2. Carefully open the tube and add 100ul of sterile water to dissolve the DNA.
3. Close the tube and incubate for 10 minutes at room temperature.
4. Briefly vortex the tube and then do a quick spin (less than 5000xg) to concentrate the liquid at the bottom.
5. Store the suspended plasmid at -20°C. The DNA is stable for at least one year from date of shipping when stored at -20°C.

RefSeq: [NM_001143852.2](#)

RefSeq Size: 3111 bp

RefSeq ORF: 1497 bp

Locus ID: 84260

UniProt ID: [Q9BT92](#)

Cytogenetics: 12q24.11

Gene Summary: Tumor suppressor which has the ability to inhibit cell growth and be pro-apoptotic during cell stress. Inhibits cell growth in bladder and prostate cancer cells by a down-regulation of HSPB1 by inhibiting its phosphorylation. May act as a 'capping' or 'branching' protein for keratin filaments in the cell periphery. May regulate K8/K18 filament and desmosome organization mainly at the apical or peripheral regions of simple epithelial cells (PubMed:15731013, PubMed:18931701). Is a negative regulator of ciliogenesis (PubMed:25270598).[UniProtKB/Swiss-Prot Function]