

Product datasheet for **RG227262**

CPT1B (NM_001145135) Human Tagged ORF Clone

Product data:

Product Type:	Expression Plasmids
Product Name:	CPT1B (NM_001145135) Human Tagged ORF Clone
Tag:	TurboGFP
Symbol:	CPT1B
Synonyms:	CPT1-M; CPT1M; CPTI; CPTI-M; M-CPT1; MCCPT1; MCPT1
Mammalian Cell Selection:	Neomycin
Vector:	pCMV6-AC-GFP (PS100010)
E. coli Selection:	Ampicillin (100 ug/mL)



[View online »](#)

ORF Nucleotide
Sequence:

>RG227262 representing NM_001145135
Red=Cloning site Blue=ORF Green=Tags(s)

TTTTGTAATACGACTCACTATAGGGCGGCCGGGAATTCGTCGACTGGATCCGGTACCGAGGAGATCTGCC
GCC**CGGATCGCC**

ATGGCGGAAGCTCACCAGGCCGTGGCCTTCCAGTTCACGGTGACCCAGACGGGGTCGACTTCCGGCTCA
GTCGGGAGGCCCTGAAACACGTCTACCTGTCTGGGATCAACTCCTGGAAGAAACGCCTGATCCGCATCAA
GAATGGCATCCTCAGGGCGTGTACCCTGGCAGCCCCACCAGCTGGCTGGTCGTCATCATGGCAACAGTG
GGTTCTCTCTTCTGCAACGTGGACATCTCCTTGGGGCTGGTCAGTTGCATCCAGAGATGCCTCCCTCAGG
GGTGTGGCCCTACCAGACCCCGCAGACCCGGGCACTTCTCAGCATGGCCATCTTCTCCACGGGCGTCTG
GGTGACGGGCATCTTCTTCCGCCAAACCTGAAGTCTTCTCTGCTACCATGGGTGGATGTTTGAG
ATGCATGGCAAGACCAGCAACTTGACCAGGATCTGGGCTATGTGTATCCGCCTTCTATCCAGCCGGCACC
CTATGCTCTACAGCTTCCAGACATCTCTGCCAAGCTTCTGTGCCAGGGTGTGAGCCACAATTCAGCG
GTACCTAGAGTCTGTGCGCCCTTGTGGATGATGAGGAATATTACCGCATGGAGTTGCTGGCCAAAGAA
TTCCAGGACAAGACTGCCCCAGGCTGCAGAAATACCTGGTGCTCAAGTCATGGTGGGCAAGTAACATATG
TGAGTGACTGGTGGGAAGAGTACATCTACCTTCGAGGCAGGAGCCCTCTCATGGTGAACAGCAACTATTA
TGTGATGGACCTTGTGCTCATCAAGAATACAGACGTGCAGGCAGCCCGCCTGGGAAAACATCATCCACGCC
ATGATCATGTATCGCCGTAACCTGGACCGTGAAGAAATCAAGCCTGTGATGGCACTGGGCATAGTGCCTA
TGTGCTCTACCAGATGGAGGGGATGTTCAACACCACTCGGATCCCGGGCAAGGACACAGATGTGCTACA
GCACCTCTCAGACAGCCGGCAGTGGCTGTCTACCACAAGGGACGCTTCTTCAAGCTGTGGCTCTATGAG
GGCGCCCGTCTGCTCAAGCCTCAGGATCTGGAGATGCAGTTCAGAGGATCCTGGACGACCCCTCCCCAC
CTCAGCCTGGGGAGGAGAAGCTGGCAGCCCTCACTGCAGGAGGAAGGGTGGAGTGGGCGCAGGCACGCCA
GGCCTTCTTAGCTCTGGAAGAATAAGGCTGCCTTGGAGGCCATCGAGCGTGCCGCTTCTTCTGTCGCC
CTGGATGAGGAATCCTACTCTATGACCCGAAGATGAGGCCAGCCTCAGCCTCTATGGCAAGGCCCTGC
TACATGGCAACTGCTACAACAGGTGGTTTGACAAATCCTTCACTCTCATTTCTTCAAGAATGGCCAGTT
GGGTCTCAATGCAGAGCATGCGTGGGCAGATGCTCCCATATTGGGCACCTCTGGGAGTTTGTCTGGGC
ACAGACAGCTTCCACCTGGGCTACACGGAGACCGGGCACTGCCTGGGCAAACCGAACCTGCGCTCGCAC
CTCCTACACGGCTGCAGTGGGACATTCAAAACAGTGCCAGGCGGTATCGAGAGTTCTACCAGGTGGC
CAAGGCGTTGGCAGACGACGTGGAGTTGACTGCTTCCAGTTCCTGCCCTTGGCAAAGGCCTCATCAAG
AAGTGCCGGACCAGCCCTGATGCCTTTGTGAGATCGCGCTGCAGCTGGCTCACTCCGGGACAGGGGTA
AGTTCTGCTGACCTATGAGGCCTCAATGACCAGAATGTTCCGGGAGGGACGGACTGAGACTGTGCGTTC
CTGTACCAGCGAGTCCACAGCCTTTGTGCAAGCCATGATGGAGGGGTCCACACAAAAGCAGACCTGCGA
GATCTCTTCCAGAAGGCTGCTAAGAAGCACCAGAATATGTACCGCCTGGCCATGACCGGGGACGGGATCG
ACAGGCACCTCTTCTGCCTTACTTGGTCTCCAAGTACCTAGGAGTCAGCTCTCCTTCTTCTGCTGAGGT
GCTCTCGGAACCTGGCGTCTCTCCACCAGCCAGATCCCCAATCCCAGATCCGCATGTTCCGACCCAGAG
CAGCACCCCAATCACCTGGGCGCTGGAGGTGGCTTGGCCCTGTAGCAGATGATGGCTATGGAGTTTCT
ACATGATTGCAGGCGAGAACACGATCTTCTTCCACATCTCCAGCAAGTTCTCAAGCTCAGAGACGAAACGC
CCAGCGCTTGGAAACCACATCCGCAAAGCCCTGCTGGACATTGCTGATCTTTTCAAGTTCCCAAGGCC
TACAGC

ACGCGTACGCGGCCGCTCGAG - GFP Tag - GTTTAA

Protein Sequence: >RG227262 representing NM_001145135
 Red=Cloning site Green=Tags(s)

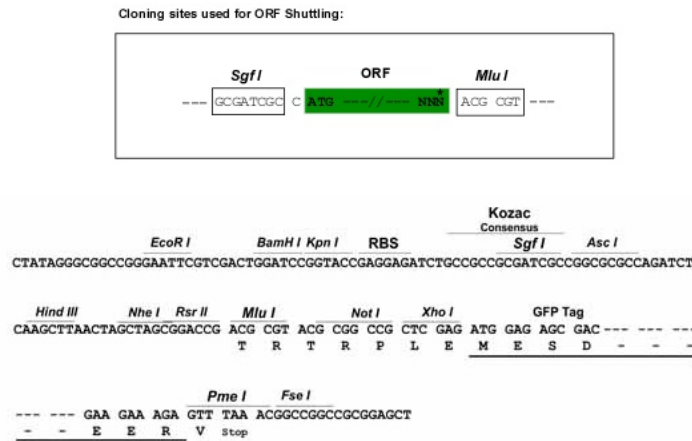
```

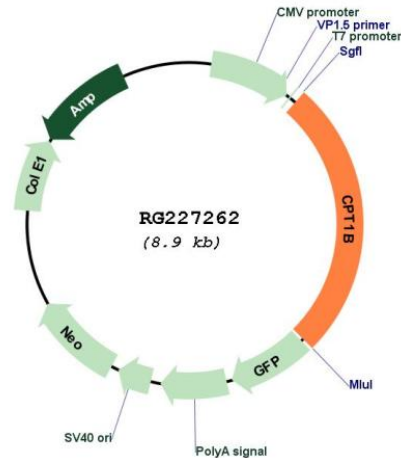
MAEAHQAVAFQFTVTPDGVDFRLSREALKHVYLSGINSWKKRLIRIKNGILRGVYPGSPTSWLVVIMATV
GSSF CNVDISLGLVSCIQRCLPQCGPYQTPQTRALLSMAIFSTGVWVTGIFFFRQTLKLLLCYHGWMFE
MHGKTSNLTRIWAMCIRLLSSRHPMLYSFQTSLPKLPVPRVSATIQRYLESVRPLLDDEEYYRMELLAKE
FQDKTAPRLQKYLVLKSWWASNYVSDWWEYIYLRGRSPLMVNSNYVMDLVLIKNTDVQAARLGNIIHA
MIMYRRKLDREEIKPVMALGIVPMCSYQMEGMFNTRIPGKDTDVLQHLSDSRHVAVYHKGRFFKLWLYE
GARLLKPQDLEMQFQRILDDPSPQPGEKLAALTAGGRVEWAQARQAFFSSGKNKAALAEIERAAFFVA
LDEESYSYDPEDEASLSLYGKALLHGNCYNRWFDKSFTLISFKNGQLGLNAEHAWADAPIIGHLWEFVLG
TDSFHLGYTETGHCLGKPNPALAPPTRLQWDIPKQCQAVIESSYQVAKALADDVELYCFQFLPFQGLIK
KCRTSPDAFVQIALQLAHRDRGKFCLEYEASMRMFREGRTETVRSCTSESTAFVQAMMEGSHTKADLR
DLFQKAAKKHQNMRYLAMTGAGIDRHLFCLYLVS KYLGVSSPFLAEVLSEPWRLSTSQIPQSQIRMFDP
E QHPNHLGAGGGFPGVADDGYGVSYMIAGENTIFFHISSKFSSE TNAQRFGNHIRKALLDIADLFQVPKA
YS
  
```

TRTRPLE - GFP Tag - V

Restriction Sites: SgfI-MluI

Cloning Scheme:



Plasmid Map:


ACCN: NM_001145135

ORF Size: 2316 bp

OTI Disclaimer: The molecular sequence of this clone aligns with the gene accession number as a point of reference only. However, individual transcript sequences of the same gene can differ through naturally occurring variations (e.g. polymorphisms), each with its own valid existence. This clone is substantially in agreement with the reference, but a complete review of all prevailing variants is recommended prior to use. [More info](#)

OTI Annotation: This clone was engineered to express the complete ORF with an expression tag. Expression varies depending on the nature of the gene.

Components: The ORF clone is ion-exchange column purified and shipped in a 2D barcoded Matrix tube containing 10ug of transfection-ready, dried plasmid DNA (reconstitute with 100 ul of water).

Reconstitution Method:

1. Centrifuge at 5,000xg for 5min.
2. Carefully open the tube and add 100ul of sterile water to dissolve the DNA.
3. Close the tube and incubate for 10 minutes at room temperature.
4. Briefly vortex the tube and then do a quick spin (less than 5000xg) to concentrate the liquid at the bottom.
5. Store the suspended plasmid at -20°C. The DNA is stable for at least one year from date of shipping when stored at -20°C.

RefSeq: [NM_001145135.1](#), [NP_001138607.1](#)

RefSeq Size: 2697 bp

RefSeq ORF: 2319 bp

Locus ID: 1375

UniProt ID: [Q92523](#)

Cytogenetics: 22q13.33

Protein Families:	Druggable Genome, Transmembrane
Protein Pathways:	Adipocytokine signaling pathway, Fatty acid metabolism, PPAR signaling pathway
Gene Summary:	The protein encoded by this gene, a member of the carnitine/choline acetyltransferase family, is the rate-controlling enzyme of the long-chain fatty acid beta-oxidation pathway in muscle mitochondria. This enzyme is required for the net transport of long-chain fatty acyl-CoAs from the cytoplasm into the mitochondria. Multiple transcript variants encoding different isoforms have been found for this gene, and read-through transcripts are expressed from the upstream locus that include exons from this gene. [provided by RefSeq, Jun 2009]