

Product datasheet for **RG227229**

SLC25A44 (NM_001135672) Human Tagged ORF Clone

Product data:

Product Type: Expression Plasmids
Product Name: SLC25A44 (NM_001135672) Human Tagged ORF Clone
Tag: TurboGFP
Symbol: SLC25A44
Synonyms: FLJ90431; KIAA0446; OTTHUMP00000016580; RP11-54H19.3; solute carrier family 25, member 44
Mammalian Cell Selection: Neomycin
Vector: pCMV6-AC-GFP (PS100010)
E. coli Selection: Ampicillin (100 ug/mL)
ORF Nucleotide Sequence: >RG227229 representing NM_001135672
Red=Cloning site **Blue**=ORF **Green**=Tags(s)

TTTTGTAATACGACTCACTATAGGGCGGCCGGAATTCGTCGACTGGATCCGGTACCGAGGAGATCTGCC
GCC**CGATCGCC**

ATGGAGGACAAACGCAACATCCAGATCATCGAGTGGGAACACCTGGACAAGAAGAAGTTCTACGTGTTTG
GTGTGGCAATGACAATGATGATCCGTGTGAGTGTCTACCCATTCACCCTCATCCGCACCCGGTTGCAAGT
TCAGAAGGGGAAGAGCCTCTACCATGGACCTTCGATGCCTTCATCAAGATCCTGCAGGCTGATGGACTT
CGCGGCTTCTATCGAGGCTATGTGGCTTACTGCTTACCTATATCCAAACAGTGTCTGCTGGTGGCCCT
TCTATCACTTCTATGCAGAGCAGCTCTCCTACCTGTGTCCTAAGGAGTGCCCTCACATTGTCTTTCAAGC
TGTCTCGGGCCCTGGCTGCAGCCACTGCCTCCATCCTACCAATCCCATGGATGTCATACGAACCCGT
GTGCAGGTTGAGGCAAGAACTCCATCATCCTGACCTTCAGACAGCTGATGGCAGAAGAAGGCCCTTGGG
GCCTCATGAAGGCCCTCTCGGCCAGAATCATCTCAGCCACACCTCCACCATTGTATTGTGGTGGGCTA
TGAGAGCCTCAAGAAACTCAGCCTCCGACTGAGCTGGTGGACTCGAGACTGG

ACGCGTACGCGGCCGCTCGAG - GFP Tag - GTTTAA

Protein Sequence: >RG227229 representing NM_001135672
Red=Cloning site **Green**=Tags(s)

MEDKRNIQIIWEHLDKKKFYVFGVAMTMMIRVSVYPFTLIRTRLQVQKGSLYHGTFDAFIKILQADGL
RGFYRGYVASLLTYIPNSAVWWPFYHFYAEQLSYLCPKECPHIVFQAVSGPLAAATASILTNPMDVIRTR
VQVEGKNSIILTFRQLMAEEGPWGLMKLSARIISATPSTIVIVVGYESLKKLSLRPELVDSRHW

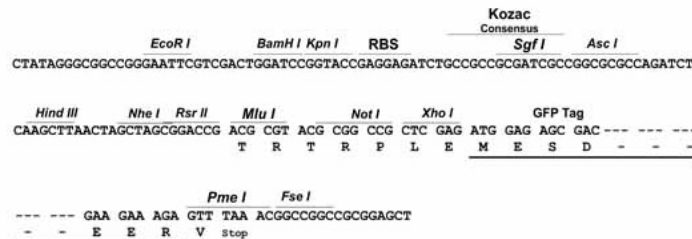
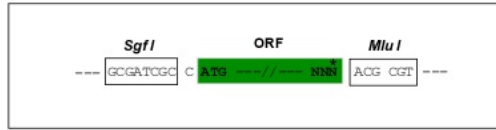
TRTRPLE - GFP Tag - V



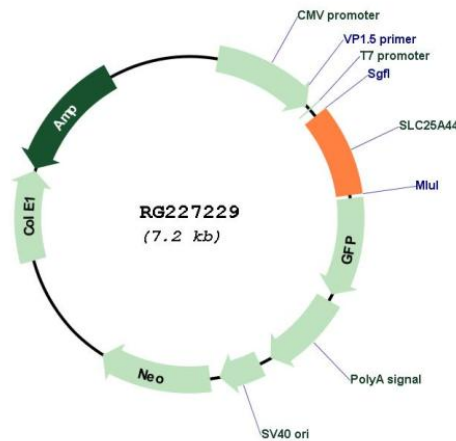
Restriction Sites: SgfI-MluI

Cloning Scheme:

Cloning sites used for ORF Shuttling:



Plasmid Map:



ACCN: NM_001135672

ORF Size: 615 bp

OTI Disclaimer: The molecular sequence of this clone aligns with the gene accession number as a point of reference only. However, individual transcript sequences of the same gene can differ through naturally occurring variations (e.g. polymorphisms), each with its own valid existence. This clone is substantially in agreement with the reference, but a complete review of all prevailing variants is recommended prior to use. [More info](#)

OTI Annotation: This clone was engineered to express the complete ORF with an expression tag. Expression varies depending on the nature of the gene.

Components:	The ORF clone is ion-exchange column purified and shipped in a 2D barcoded Matrix tube containing 10ug of transfection-ready, dried plasmid DNA (reconstitute with 100 ul of water).
Reconstitution Method:	<ol style="list-style-type: none">1. Centrifuge at 5,000xg for 5min.2. Carefully open the tube and add 100ul of sterile water to dissolve the DNA.3. Close the tube and incubate for 10 minutes at room temperature.4. Briefly vortex the tube and then do a quick spin (less than 5000xg) to concentrate the liquid at the bottom.5. Store the suspended plasmid at -20°C. The DNA is stable for at least one year from date of shipping when stored at -20°C.
RefSeq:	<u>NM_001135672.1, NP_001129144.1</u>
RefSeq Size:	3326 bp
RefSeq ORF:	617 bp
Locus ID:	9673
Cytogenetics:	1q22
Protein Families:	Druggable Genome, Transmembrane
Gene Summary:	SLC25A44 belongs to the SLC25 family of mitochondrial carrier proteins (Haitina et al., 2006 [PubMed 16949250]).[supplied by OMIM, Mar 2008]