

Product datasheet for **RG227225**

MTRES1 (NM_001142470) Human Tagged ORF Clone

Product data:

Product Type:	Expression Plasmids
Product Name:	MTRES1 (NM_001142470) Human Tagged ORF Clone
Tag:	TurboGFP
Symbol:	MTRES1
Synonyms:	C6orf203; HSPC230; PRED31
Mammalian Cell Selection:	Neomycin
Vector:	pCMV6-AC-GFP (PS100010)
E. coli Selection:	Ampicillin (100 ug/mL)
ORF Nucleotide Sequence:	>RG227225 representing NM_001142470 Red=Cloning site Blue=ORF Green=Tags(s)

TTTTGTAATACGACTCACTATAGGGCGCCGGGAATTCGTCGACTGGATCCGGTACCGAGGAGATCTGCC
GCC**CGATCGCC**

ATGATTAAAGCGCCATGGCTATGGCTAGTGTTAAATTGCTTGCCGGTGTTTAAGAAAGCCAGATGCCT
GGATTGGACTCTGGGGTGTCTCCGAGGGACACCTTCATCATAAACTCTGTACTTCTGGAATCGATA
CTTGATTTTTCTAGTACCAAGTTACGTGCACCAAATTATAAACTTTTTATAATTTTTCTCACTG
AGACTCCCAGGGCTTTACTATCTCCAGAATGTATTTTCCTTTTCCGTAAGACTCAAAAGTAATATA
GGTCTACAAAATCTACTAAAAGTCTCTGCAAAAAGTAGATGAAGAGGACTCTGATGAAGAAAGCCATCA
TGATGAGATGAGTGAGCAGGAAGAGGAGCTTGAGGATGATCCTACTGTAGTCAAAAATATAAAGACCTG
GAAAAAGCAGTTCAGTCTTTTCGGTATGATGTTGTCTGAAGACGGGGCTAGATATTGGGAGAAAACAAAG
TGAAGATGCTTTCTACAAAGGTGAACCTCAGGCTGAATGAGGAAAAATTATGGAAGAAAAGCAGAACGGT
GAAAGTGGGAGATACATTGGATCTTCTCATTGGAGAGGATAAAGAAGCAGGAACAGAGACAGTTATGCGG
ATTCTTTGAAAAAGTGTTTGAAGAGAAGACTGAAAGTAAAAATACAGAGTGGTGTACGGCGGTGGA
AAAGTTAAAGTTGCCTAAGAAGAGAATGTCTAAA

ACGCGTACGCGGCCGCTCGAG - GFP Tag - GTTTAA



[View online »](#)

Protein Sequence: >RG227225 representing NM_001142470
Red=Cloning site Green=Tags(s)

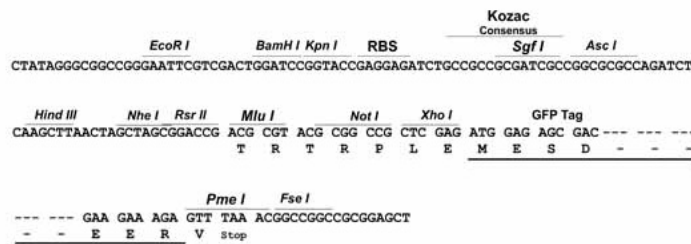
MIISAMAMASVKLLAGVLRKPDAWIGLWGVLRGTPSSYKLCISWNRYLYFSSTKLRAPNYKTLFYNIIFSL
 RLPGLLLSPECIFPFSVRLKSNIRSTKSTKKSLLQKVDDEEDSDEESHHEMSEQEELEDPTVVKNYKDL
 EKAVQSFYRDVVLKTGLDIGRNKVEDAFYKGLRLNEEKLWKSRTVKVGDITLDLLIGEDKEAGTETVMR
 ILLKKVFEEKTESEKYRVVLRWRKSLKLPKKRMSK

TRTRPLE - GFP Tag - V

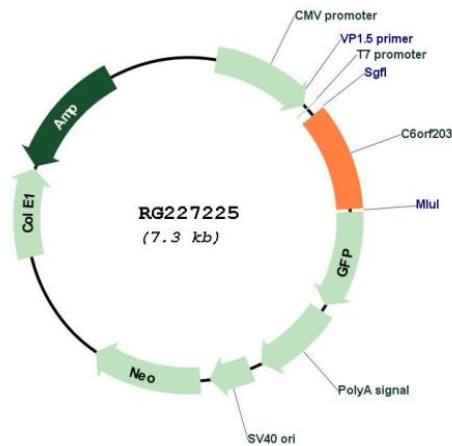
Restriction Sites: SgfI-MluI

Cloning Scheme:

Cloning sites used for ORF Shutting:



Plasmid Map:



ACCN: NM_001142470

ORF Size: 735 bp

OTI Disclaimer:	The molecular sequence of this clone aligns with the gene accession number as a point of reference only. However, individual transcript sequences of the same gene can differ through naturally occurring variations (e.g. polymorphisms), each with its own valid existence. This clone is substantially in agreement with the reference, but a complete review of all prevailing variants is recommended prior to use. More info
OTI Annotation:	This clone was engineered to express the complete ORF with an expression tag. Expression varies depending on the nature of the gene.
Components:	The ORF clone is ion-exchange column purified and shipped in a 2D barcoded Matrix tube containing 10ug of transfection-ready, dried plasmid DNA (reconstitute with 100 ul of water).
Reconstitution Method:	<ol style="list-style-type: none">1. Centrifuge at 5,000xg for 5min.2. Carefully open the tube and add 100ul of sterile water to dissolve the DNA.3. Close the tube and incubate for 10 minutes at room temperature.4. Briefly vortex the tube and then do a quick spin (less than 5000xg) to concentrate the liquid at the bottom.5. Store the suspended plasmid at -20°C. The DNA is stable for at least one year from date of shipping when stored at -20°C.
RefSeq:	NM_001142470.3
RefSeq Size:	1525 bp
RefSeq ORF:	738 bp
Locus ID:	51250
UniProt ID:	Q9P0P8
Cytogenetics:	6q21
Gene Summary:	Mitochondrial RNA-binding protein involved in mitochondrial transcription regulation. Functions as a protective factor to maintain proper mitochondrial RNA level during stress. Acts at the transcription level and its protective function depends on its RNA binding ability. [UniProtKB/Swiss-Prot Function]