

## Product datasheet for **RG227216**

### **PPIAL4C (NM\_001135789) Human Tagged ORF Clone**

#### Product data:

**Product Type:** Expression Plasmids  
**Product Name:** PPIAL4C (NM\_001135789) Human Tagged ORF Clone  
**Tag:** TurboGFP  
**Symbol:** PPIAL4C  
**Synonyms:** COAS-2  
**Mammalian Cell Selection:** Neomycin  
**Vector:** pCMV6-AC-GFP (PS100010)  
**E. coli Selection:** Ampicillin (100 ug/mL)  
**ORF Nucleotide Sequence:** >RG227216 representing NM\_001135789  
Red=Cloning site Blue=ORF Green=Tags(s)

TTTTGTAATACGACTCACTATAGGGCGCCGGGAATTCGTCGACTGGATCCGGTACCGAGGAGATCTGCC  
GCC**CGGATCGCC**

ATGGTCAACTCCGTCGTCTTTTTGACATCACCGTCGACGGCAAGCCCTTGGGCCGATCTCCATCAAAC  
TGTTTGCAGACAAGATTCTAAAGACAGCGGAAACTTTCGTGCTCTGAGACTGGAGAGAAAGGATTTTCG  
TTATAAGGGTTCCTGCTTTCACAGAATTATCCAGGGTTATGTGTCAGGGTGGTACTTACACGCCAT  
AATGGCACTGGTACAAGTCCATCTATGGGGAGAAATTTGATGATGAGAACCTCATCCGAAAGCATAACG  
GTTCTGGCATCTTGCCATGGCAAATGCTGGACCAACACAAATGGTTCCAGTTTTTCATCTGTGCTGC  
CAAGACTGAGTGGTTGGATGGCAAGCATGTGGCCTTTGGCAAGGTGAAAGAACGTGTGAATATTGTGGAA  
GCCATGGAGCACTTTGGGTACAGGAATAGCAAGACCAGCAAGAAGATCACCATTGCTGACTGTGGACAAT  
TC

**ACGCGT**ACGCGGCCGCTCGAG - GFP Tag - GTTTAA

**Protein Sequence:** >RG227216 representing NM\_001135789  
Red=Cloning site Green=Tags(s)

MVNSVVFDDITVDGKPLGRISIKLFADKILKTAENFRALSTGEKGFYKGSFCFHRIIPGFMCQGGDFTRH  
NGTGDKSIYGEKFDENLIRKHTGSGILSMANAGPNTNGSQFFICAAKTEWLDGKHVAFGKVKERVNIVE  
AMEHFYRNSKTSKKITIAIDCGQF

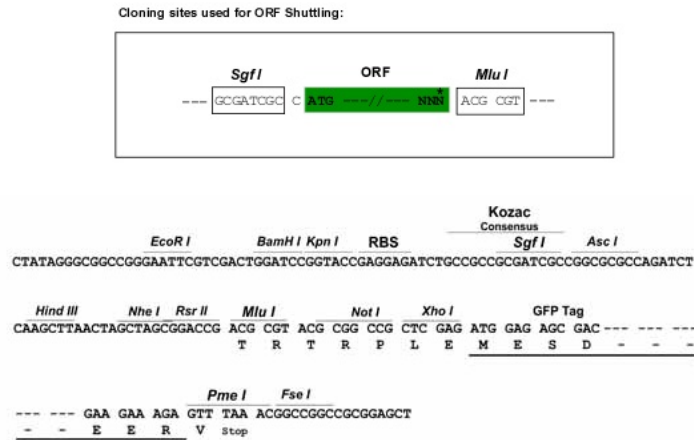
**TRTRPLE** - GFP Tag - V

**Restriction Sites:** Sgfl-MluI

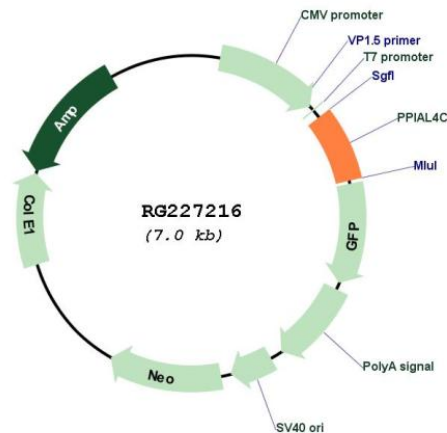


[View online »](#)

Cloning Scheme:



Plasmid Map:



ACCN: NM\_001135789

ORF Size: 492 bp

OTI Disclaimer: The molecular sequence of this clone aligns with the gene accession number as a point of reference only. However, individual transcript sequences of the same gene can differ through naturally occurring variations (e.g. polymorphisms), each with its own valid existence. This clone is substantially in agreement with the reference, but a complete review of all prevailing variants is recommended prior to use. [More info](#)

OTI Annotation: This clone was engineered to express the complete ORF with an expression tag. Expression varies depending on the nature of the gene.

<b>Components:</b>	The ORF clone is ion-exchange column purified and shipped in a 2D barcoded Matrix tube containing 10ug of transfection-ready, dried plasmid DNA (reconstitute with 100 ul of water).
<b>Reconstitution Method:</b>	<ol style="list-style-type: none"><li>1. Centrifuge at 5,000xg for 5min.</li><li>2. Carefully open the tube and add 100ul of sterile water to dissolve the DNA.</li><li>3. Close the tube and incubate for 10 minutes at room temperature.</li><li>4. Briefly vortex the tube and then do a quick spin (less than 5000xg) to concentrate the liquid at the bottom.</li><li>5. Store the suspended plasmid at -20°C. The DNA is stable for at least one year from date of shipping when stored at -20°C.</li></ol>
<b>RefSeq:</b>	<u><a href="#">NM_001135789.2</a></u>
<b>RefSeq Size:</b>	3854 bp
<b>RefSeq ORF:</b>	495 bp
<b>Locus ID:</b>	653598
<b>UniProt ID:</b>	<u><a href="#">A0A0B4J2A2</a></u>
<b>Cytogenetics:</b>	1q21.2
<b>Gene Summary:</b>	PPIases accelerate the folding of proteins. It catalyzes the cis-trans isomerization of proline imidic peptide bonds in oligopeptides (By similarity).[UniProtKB/Swiss-Prot Function]