

## Product datasheet for **RG227214**

### MEF2B (NM\_001145785) Human Tagged ORF Clone

#### Product data:

**Product Type:** Expression Plasmids  
**Product Name:** MEF2B (NM\_001145785) Human Tagged ORF Clone  
**Tag:** TurboGFP  
**Symbol:** MEF2B  
**Synonyms:** RSRFR2  
**Mammalian Cell Selection:** Neomycin  
**Vector:** pCMV6-AC-GFP (PS100010)  
**E. coli Selection:** Ampicillin (100 ug/mL)  
**ORF Nucleotide Sequence:** >RG227214 representing NM\_001145785  
Red=Cloning site Blue=ORF Green=Tags(s)

TTTTGTAATACGACTCACTATAGGGCGCCGGGAATTCGTCGACTGGATCCGGTACCGAGGAGATCTGCC  
GCC**CGATCGCC**

ATGGGGAGGAAAAAATCCAGATCTCCCGCATCTGGACCAAAGGAATCGGCAGGTGACGTTACCAAGC  
GGAAGTTCGGGCTGATGAAGAAGGCCTATGAGCTGAGCGTGCTCTGTGACTGTGAGATAGCCCTCATCAT  
CTTCAACAGCGCCAACCGCCTCTCCAGTATGCCAGCACGGACATGGACCGTGTGCTGCTGAAGTACACA  
GAGTACAGCGAGCCCCACGAGAGCCGACCAACTGACATCCTCGAGACGCTGAAGCGGAGGGGATTG  
GCCTCGATGGGCCAGAGCTGGAGCCGGATGAAGGGCCTGAGGAGCCAGGAGAGAAGTTTCGGAGGCTGGC  
AGGCGAAGGGGGTGATCCGGCCTTGCCCGACCCCGGCTGTATCCTGCAGCTCCTGCTATGCCAGCCCA  
GATGTGGTATACGGGCCCTTACCGCCACCAAGGCTGTGACCCAGTGGGCTTGGGGAAGCACTGCCCGCC  
AGAGCCGCCCATCTCCCTTCCGACCAGCAGCCCCAAAGCCGGGCCCCAGGCCTGGTGCACCCTCTCTT  
CTCACCAAGCCACCTCACCAGCAAGACACCACCCCACTGTACCTGCCGACGGAAGGGCGGAGGTGAGAC  
CTGCCTGGTGGCCTGGCTGGGCCCGAGGGGACTAAACACCTCCAGAAGCCTCTACAGTGGCCTGCAGA  
ACCCCTGCTCCACTGCAACTCCCGGACCCCACTGGGGAGCTTCCCTTCTCCCGGAGGCCCCCAAGA  
ATATGGCCTGGGAGACCCTCCACCGCCCCCTGGCTTGTTCAGCCCCCACTGGCCCCCTGGCAGGCC  
TCGAGGGGTGATGGCCCCCGCGTGTCTCCAGCCAGTGGGGCCGAAGCCTGGGCGAGGAGGGTC  
CCCCAACCCGCGCGCCTCCCGCCGACCCCACTCAAGTCAAGTCTGAGCGCCTCTCTCCGGCCCC  
CGGGGGCCCCGGCGACTTTCCTAAGACCTTCCCTATCCCTTGCTCCTCGCCCGTCCCTGGCAGAGCCT  
CTGCGGCTGGGCCCGCCTGCGCCGGCTGCCCTTGGCCGACGGCTGGCCCCGG

**ACGCGT**ACGCGGCCGCTCGAG - GFP Tag - GTTTAA



[View online »](#)

**Protein Sequence:** >RG227214 representing NM\_001145785  
 Red=Cloning site Green=Tags(s)

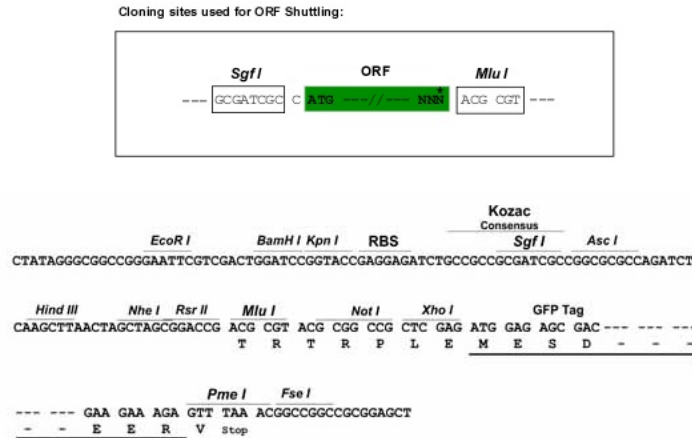
MGRKKIQISRILDQRNRQVTFTRKRFGLMKKAYELSVLCDCEIALIIFNSANRLFQYASTMDRVLKKT  
 EYSEPHESRTNDILETLKRRGIGLDGPELEPDEGPEEPGEKFRRLAGEGGDPALPRPRL YPAAPAMPSP  
 DVVYGALPPPDCPSGLGEALPAQSRSPFRPAAPKAGPPGLVHPLFSPSHLTSKTPPPL YLPTEGRRSD  
 LPGGLAGPRGGLNTRSRLYSLQNPCSTATPGPPLGSFPFLPGGPPEYGLGDP PPPPGLLQPPTLAPWQP  
 SRGDGPPAVSSQPSGGRSLGEEGPTRGASPTTPVSIKSERLSPAPGGPGDFPKTFYPYLLLLARSLAEP  
 LRPGPALRRLPLADGWPR

TRTRPLE - GFP Tag - V

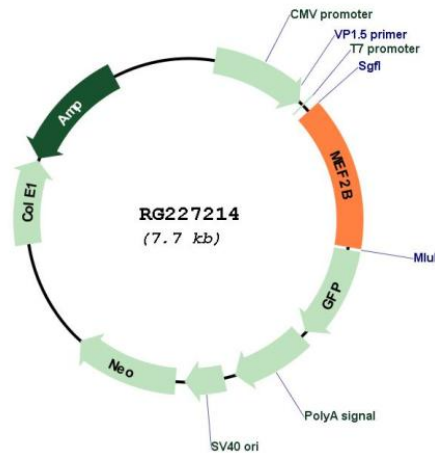
**Restriction Sites:**

SgfI-MluI

**Cloning Scheme:**



**Plasmid Map:**



**ACCN:**

NM\_001145785

<b>ORF Size:</b>	1104 bp
<b>OTI Disclaimer:</b>	<p>Due to the inherent nature of this plasmid, standard methods to replicate additional amounts of DNA in E. coli are highly likely to result in mutations and/or rearrangements. Therefore, OriGene does not guarantee the capability to replicate this plasmid DNA. Additional amounts of DNA can be purchased from OriGene with batch-specific, full-sequence verification at a reduced cost. Please contact our customer care team at <a href="mailto:custsupport@origene.com">custsupport@origene.com</a> or by calling 301.340.3188 option 3 for pricing and delivery.</p> <p>The molecular sequence of this clone aligns with the gene accession number as a point of reference only. However, individual transcript sequences of the same gene can differ through naturally occurring variations (e.g. polymorphisms), each with its own valid existence. This clone is substantially in agreement with the reference, but a complete review of all prevailing variants is recommended prior to use. <a href="#">More info</a></p>
<b>OTI Annotation:</b>	This clone was engineered to express the complete ORF with an expression tag. Expression varies depending on the nature of the gene.
<b>Components:</b>	The ORF clone is ion-exchange column purified and shipped in a 2D barcoded Matrix tube containing 10ug of transfection-ready, dried plasmid DNA (reconstitute with 100 ul of water).
<b>Reconstitution Method:</b>	<ol style="list-style-type: none"> <li>1. Centrifuge at 5,000xg for 5min.</li> <li>2. Carefully open the tube and add 100ul of sterile water to dissolve the DNA.</li> <li>3. Close the tube and incubate for 10 minutes at room temperature.</li> <li>4. Briefly vortex the tube and then do a quick spin (less than 5000xg) to concentrate the liquid at the bottom.</li> <li>5. Store the suspended plasmid at -20°C. The DNA is stable for at least one year from date of shipping when stored at -20°C.</li> </ol>
<b>RefSeq:</b>	<a href="#">NM_001145785.2</a>
<b>RefSeq Size:</b>	1472 bp
<b>RefSeq ORF:</b>	1107 bp
<b>Locus ID:</b>	100271849
<b>UniProt ID:</b>	<a href="#">Q02080</a>
<b>Cytogenetics:</b>	19p13.11
<b>Gene Summary:</b>	<p>The product of this gene is a member of the MADS/MEF2 family of DNA binding proteins. The protein is thought to regulate gene expression, including expression of the smooth muscle myosin heavy chain gene. This region undergoes considerable alternative splicing, with transcripts supporting two non-overlapping loci (GeneID 729991 and 100271849) as well as numerous read-through transcripts that span both loci (annotated as GeneID 4207). Several isoforms of this protein are expressed from either this locus or from some of the read-through transcripts annotated on GeneID 4207. [provided by RefSeq, Jan 2014]</p>