

## Product datasheet for **RG227213**

### DENN (MADD) (NM\_001135943) Human Tagged ORF Clone

#### Product data:

Product Type:	Expression Plasmids
Product Name:	DENN (MADD) (NM_001135943) Human Tagged ORF Clone
Tag:	TurboGFP
Symbol:	MADD
Synonyms:	DEEAH; DENN; IG20; NEDDISH; RAB3GEP; RabGEF
Mammalian Cell Selection:	Neomycin
Vector:	pCMV6-AC-GFP (PS100010)
E. coli Selection:	Ampicillin (100 ug/mL)
ORF Nucleotide Sequence:	>RG227213 representing NM_001135943 Red=Cloning site Blue=ORF Green=Tags(s)

TTTTGTAATACGACTCACTATAGGGCGCCGGGAATTCGTCGACTGGATCCGGTACCGAGGAGATCTGCC  
GCC**CGATCGCC**

ATGGTGCAAAAGAAGAAGTTCTGTCTCGGTTACTTGACTATCTAGTGATCGTAGGGCCAGGCACCCGA  
GCAGTGATAGCGTGGCCAGACTCTGAATTGCTACGGCGATACCCCTTGGAGGATCACACTGAGTTTCC  
CCTGCCCCAGATGTAGTGTCTTCTGCCAGCCGAGGGTGCCTGAGCGTGGCAGCGGCGCATGAGC  
CTTCGGGATGATACCTCTTTGTCTTACCCTCACTGACAAGGACTGGAGTACGCGATATGGCATCT  
GTGTTAACTTCTACCGCTCCTTCCAAAAGCGAATCTCTAAGGAGAAGGGGAAGGTGGGGCAGGGTCCCC  
TGGGAAGGAAGGAACCCATGCCACCTGTGCCTCAGAAGAGGGTGGCACTGAGAGCTCAGAGAGTGGCTCA  
TCCTGCAGCCTCTCAGTGTGACTCTACCCCTGATGTGAACCAGTCTCCTCGGGGCAAACGCCGGGCA  
AGGCGGGGAGCCGCTCCCGCAACAGTACTCTCACGTCCCTGTGCGTGTCTAGCCACTACCCCTTCTTCTC  
CACCTTCCGAGAGTGTGTATACTCTCAAGCGCTGGTGGACTGCTGTAGTGAGCGCTTCTGGGCAAG  
AACTGGGCATCCCTCGAGGCGTACAAAGGGACACCATGTGGCGGATCTTACTGGATCGCTGTGGTAG  
AGGAGAAGTCAAGTGCCTTCTGCATGACCTTCGAGAGATTGAGGCTGGATCTATCGATTGCTGCGCTC  
CCCAGTACCCGTCTCTGGCAGAAGCGAGTAGACATCGAGTCTACCCCAAGAGCTCCAGCCAGCTCTG  
ACCTTTGCTCTTCCAGACCCATCTCGATTACCCCTAGTGGATTTCCCACTGCACCTTCCCTGGAACCTC  
TAGGTGTGGACGCTGTCTCCAGGTGCTAACCTGCATTCTGTTAGAGCACAAGGTGGTGTACAGTCCCG  
AGACTACAATGCACTCTCCATGTCTGTGATGGCATTCTGGCAATGATCTACCCACTGGAATATATGTTT  
CCTGTCATCCCGCTGCTACCCACCTGCATGGCATCAGCAGAGCAGCTGCTGTTGGCTCCAACCCCGTACA  
TCATTGGGGTTCCTGCCAGCTTCTTCTCTACAACTGGACTTCAAAATGCCTGATGATGTATGGCTAGT  
GGATCTGGACAGCAATAGGGTATTGCCCCACCAATGCAGAAGTGTGCCTATCCTGCCAGAACCAGAA  
TCACTAGAGCTGAAAAAGCATTTAAAGCAGGCCTTGGCCAGCATGAGTCTCAACACCCAGCCCATCTCA  
ATCTGGAGAAATTCATGAGGGCCAGGAGATCCCCCTTCTTGGGAAGGCTTCTAATGACCTGCAGTC  
CACACCGTCCACTGAATCAACCCACTCATCTATGGCAATGATGTGGATTCTGTGGATGTTGCAACCAGG



GTTGCCATGGTACGGTTCTTCAATTCCGCCAACGTGCTGCAGGGATTTTCAGATGCACACGCGTACCCTGC  
GCCTCTTTCCTCGGCCTGTGGTAGCTTTTCAAGCTGGCTCCTTTCTAGCCTCACGTCCCCGGCAGACTCC  
TTTTGCCGAGAAATTGGCCAGGACTCAGGCTGTGGAGTACTTTGGGGAATGGATCCTTAACCCACCAAC  
TATGCCTTTCAGCGAATTCACAACAATATGTTTGTATCCAGCCCTGATTGGTGACAAGCCAAAGTGGTATG  
CTCATCAGCTGCAGCCTATCCACTATCGCGTCTATGACAGCAATCCCAGCTGGCTGAGGCCCTGAGTGT  
ACCACCAGAGCGGACTCTGACTCCGAACCTACTGATGATAGTGGCAGTGATAGTATGGATTATGACGAT  
TCAAGCTCTTCTACTCCTCCCTTGGTGACTTTGTGCAAGTAAATGATGAAATGTGACATTAATGGTGATA  
CTCCCAATGTGGACCCTCTGACACATGCAGCACTGGGGGATGCCAGCGAGGTGGAGATTGACGAGCTGCA  
GAATCAGAAGGAAGCAGAAGAGCCTGGCCAGACAGTGAGAACTCTCAGGAAAACACCCACTGCGCTCC  
AGCTCTAGCACCACAGCCAGCAGCAGCCCCAGCACTGTATCCACGGAGCCAACTCTGAACCTGCTGACT  
CTACGGAGATGGATGATAAGGCAGCAGTAGGCGTCTCCAAGCCCCCTCCTTCCGTGCCTCCAGCATTGG  
CAAATCGAACGTGGACAGACGTAGGCAGAAAATTGGAGAGGGGGCTCAAAGCTGCTGCGGCCAACAGC  
TTGAGACTGGCAAGTACTCAGATGCAGAGTCACTCTCGGGCAAGCTCCCAACTCCACCGTCTCCA  
ACACCAGCACCAGGGCTTCGGGGGCATCATGTCTTTGCCAGCAGCCTCTATCGGAACCACAGTACCAG  
CTTCAGTCTTTCAAACCTCACACTGCCACCAAAGGTGCCGAGAGAAGGCCACGCCCTTCCCAGTCTG  
AAAGGAAACAGGAGGGCGTTAGTGGATCAGAAGTCATCTGTCTTAACACAGCCCAACAGTGAAAAGAG  
AACCTCCATACCCCCAGGGTCGATCCAGCAATTCTAGTGAGAACCAGCAGTTCCTGAAGGAGGTGGTGCA  
CAGCGTCTGGACGGCCAGGGAGTTGGCTGGCTCAACATGAAAAGGTGCGCGGGCTGCTGGAGAGCGAG  
CAGCTGCGAGTCTTTGTCTGAGCAAGCTGAACCCGATGGTGCAGTCAAGGACGATGCCCGCAGGACA  
TCATCCCGGATGTGGAGATCAGTCGGAAGGTGTACAAGGGAATGTTAGACCTCCTCAAGTGTACAGTCT  
CAGCTTGAGCAGTCTATGCCACGCGGGTCTGGGTGGCATGCCAGCATCTTTGGGTTTTTGGAGATT  
GCCAGACCCACTACTATAGTAAAGAACCAGACAAGCGGAAGAGAAGTCCAACAGAAAGTGTAAATCCC  
CAGTTGGCAAGGATCCTGGCCTAGCTGGCGGGGGACCCAAAGGCTATGGCACAAGTGGAGTTCCACA  
ACTGGGACCTCGGGCACCAAGTGCACAGGAAAGGGTCTTAAGGAACTGGACACCAAGAAGTTTAAAGGAA  
GAAAATTTTATAGCATCTATTGGCCTGAAGTAATCAAACCTGTCTTTGACCTTGGTGAGACAGAGGAGA  
AAAAGTCCAGATCAGCGCAGACAGTGGTGTGAGCCTGACGTCTAGTTCCAGAGGACTGATCAAGACTC  
TGTCTCGGCGTGTGAGTCCAGCTGTTATGATCCGCAGCTCAAGTCAGGATTCTGAAGTTAGACCCTGAGT  
AATAGCTCTGGAGAGACCCTTGGAGCTGACAGTACTTGGAGCAGCAATGCAGGTGATGGACCAGGTGGCG  
AGGGCAGTGTTCACCTGGCAAGCTCTCGGGCACTTTGTCTGATAGTAAAATTGAGACCAACTCTGCCAC  
AAGCACTATCTTTGGTAAAGCCACAGCTTGAAGCCAAGCATAAAGGAGAAGCTGGCAGGACGCCCCATT  
CGTACTTCTGAAGATGTGAGCCAGCGAGTCTATCTCTATGAGGGACTCCTAGGCAAGAGCGTTCTACTT  
TATGGGACCAAAATGCAATTCTGGGAAGATGCCTTCTTAGATGCTGTGATGTTGGAGAGAGAAGGGATGGG  
TATGGACCAGGGTCCCCAGGAAATGATCGACAGGTACCTGTCCCTTGGAGAACATGACCGGAAGCGCCTG  
GAAGATGATGAAGATCGCTTGTGGCCACACTTCTGCACAACCTCATCTCTACATGCTGCTGATGAAGG  
TAAATAAGAAATGACATCCGCAAGAAGGTGAGGCGCCTAATGGGAAAGTGCACATTGGGCTTGTGTACAG  
CCAGCAAAATCAATGAGGTGCTTGTGATCAGCTGGCGAACCTGAATGGACGCGATCTCTATCTGGTCCAGT  
GGCAGCCGGCAGATGAAGAAGCAGACATTTGTGGTACATGCAGGGACAGATACAAACGGAGATATCTTTT  
TCATGGAGGTGTGCGATGACTGTGTGGTGTTCGTAAGTAAATCGGAACAGTGTATGAGCGCTGGTGGTA  
CGAGAAGCTCATCAACATGACCTACTGTCCCAAGACGAAGGTGTTGTGCTTGTGGCGTGAAGTGGCTCT  
GAGACCCAGCTCAACAAGTCTATACTAAAAAGTGTGGGAGCTGTACTACTGTGTGAAGGACAGCATGG  
AGCGCGCTGCCGCCGACAGCAAAGCATCAAACCCGACCTGAATTGGGTGGCGAGTTCCCTGTGACGGA  
CCTGAAGACTGGTGGGGTGGCCTGCTGCAGGTGACCCTGGAAGGGATCAACCTCAAATTCATGCACAAAT  
CAGGTTTTTCATAGAGCTGAATCACATTAAGAAAGTGAATACAGTTCGAGGCGTCTTTGTCTGGAGGAAT  
TTGTTCTGAAATTAAGAAGTGGTGGCCACAAGTACAAGACCAATGGCCCAGAAATCTGCTACTC  
CGTATTATGTCTTCTCGTACGTGGCTGCAGTTCATAGCAGTGAGGAAGATCTCAGAACCCCGCCCGG  
CCTGTCTTAGC

AGCGGACCGACGCGTACGCGGCCGCTCGAG - GFP Tag - GTTTAA

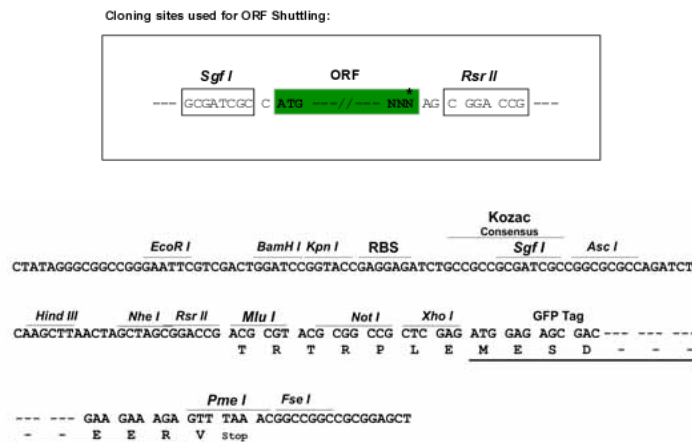
**Protein Sequence:** >RG227213 representing NM\_001135943  
 Red=Cloning site Green=Tags(s)

MVQKKKFCPRLLDYLVIIGARHPSSDSVAQTPELLRRYPLEDHTEFFLPPDVVFFCQPEGCLSVRQRMS  
 LRDDTSFVFTLTDKDTGVTRYGICVNFYRSFQKRISKEKGGGAGSRGKEGTHATCASEEGGTESSESGS  
 SLQPLSADSTPDVNQSPRGKRRAKAGSRSRNSTLTLSCVL SHYPPFFSTFRECLYTLKRLVDCCSERLLGK  
 KLGIPRGVQRDTMWRIFTGSLLEVEKSSALLHDLREIEAWIYRLLRSPVPVSGQKRVDIEVLPQELQPAL  
 TFALPDPSPRFTLVDFPLHLPLELLGVDAQLVLTCLLLEHKVVLQSRDYNALSMSVMAFVAMIYPLEYMF  
 PVIPLLPCTMASAEQLLLAPTPYIIGVPASFFLYKLDKMPDDVWLVDLDSNRVIAPTNAEVLPIPEPE  
 SLELKKHLKQALASMSLNTQPILNLEKFHEGQEIPLLLGRPSNDLQSTPSTEFNLIYGNVDVSDVATR  
 VAMVRRFNSANVLQGFQMHTRTLRLFPRPVVAFQAGSFLASRPRQTPFAEKLARTQAVEYFGEWILNPTN  
 YAFQRIHNNMFDPALIGDKPKWYAHQLQPIHYRVYDSNSQLAEALSVPPERDSDEPTDSSGSDSMDYDD  
 SSSSYSSLGDFVSEMMKCDINGDTPNVDPLTHAALGDASEVEIDELQNQKEAEEPGPDSSENSQENTPLRS  
 SSSTTASSPSTVIHGANSEPADSTEMDDKAAVGVSKPLPSVPPSIGKSNVDRRQAEIGEGAQKLLRPN  
 LRLASDSDAESDRASSPNSTVSNSTSTEGFGGIMSFASSLYRNHSTSFSLSNLTLPTKGAREKATPFPSL  
 KGNRRALVDQKSSVIKHSPTVKREPPSPQGRSSNSSENQQFLKEVVHSLVDGQGVWLNMMKVRGLLESE  
 QLRVFLSKLNRMVQSEDDARQDIIPDVEISRKYKGMDDLKCTVLSLEQSYAHAGLGGMASIFGFLEI  
 AQTHYYSKEPDKRKRSPTESVNTPVGKDPGLAGRGDPKAMAQLRVPQLGPRASATGKGPKELDTRSLKE  
 ENFIASIGPEVIKPVFDLGETEEKKSQISADSGVSLTSSSQRTDQDSVIGVSPAVMIRSSSQDSEVSTVS  
 NSSGETLGADSDLSSNAGDGGGEGSVHLASSRGTLDSEIETNSATSTIFGKAHSLKPSIKEKLAGSPI  
 RTSEDEVSRVYL YEGLLGKERSTLWDQMFWEDAFLDVMLEREGMGMDQGPQEMIDRYLSLGEHDRKRL  
 EDDEDRLATLLHNLISYMLLMKVNKNDIRKKVRRMLMGKSHIGLVYSQQINEVLDQLANLNGRDL SIWSS  
 GSRHMKKQTFVVHAGDTNGDIFFMVEVDCDVLRSNIGTVYERWYWEKLNIMTYCPKTKVLCWRRRNGS  
 ETQLNKFYTKKRELYYCVKDSMERAARQQSIKPGPELGGFPVQDLKTGEGGLLQVTLEGINKFMHN  
 QVFIELNHIKKCNVIRGVFVLEEFVPEIKEVVSHPYKTPMAHEICYSVLCVLSYVAVHSSSEDLRTPPR  
 PVSS

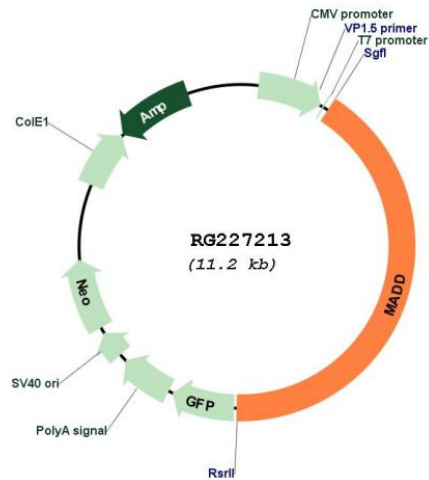
SGPTRTRRLE - GFP Tag - V

**Restriction Sites:** SgfI-RsrII

**Cloning Scheme:**



## Plasmid Map:



**ACCN:** NM\_001135943

**ORF Size:** 4632 bp

**OTI Disclaimer:** The molecular sequence of this clone aligns with the gene accession number as a point of reference only. However, individual transcript sequences of the same gene can differ through naturally occurring variations (e.g. polymorphisms), each with its own valid existence. This clone is substantially in agreement with the reference, but a complete review of all prevailing variants is recommended prior to use. [More info](#)

**OTI Annotation:** This clone was engineered to express the complete ORF with an expression tag. Expression varies depending on the nature of the gene.

**Components:** The ORF clone is ion-exchange column purified and shipped in a 2D barcoded Matrix tube containing 10ug of transfection-ready, dried plasmid DNA (reconstitute with 100 ul of water).

**Reconstitution Method:**

1. Centrifuge at 5,000xg for 5min.
2. Carefully open the tube and add 100ul of sterile water to dissolve the DNA.
3. Close the tube and incubate for 10 minutes at room temperature.
4. Briefly vortex the tube and then do a quick spin (less than 5000xg) to concentrate the liquid at the bottom.
5. Store the suspended plasmid at -20°C. The DNA is stable for at least one year from date of shipping when stored at -20°C.

RefSeq: [NM\\_001135943.1](#), [NP\\_001129415.1](#)

RefSeq Size: 5746 bp

RefSeq ORF: 4635 bp

Locus ID: 8567

UniProt ID: [Q8WXG6](#)

Cytogenetics: 11p11.2

Protein Families: Druggable Genome

**Gene Summary:** Tumor necrosis factor alpha (TNF-alpha) is a signaling molecule that interacts with one of two receptors on cells targeted for apoptosis. The apoptotic signal is transduced inside these cells by cytoplasmic adaptor proteins. The protein encoded by this gene is a death domain-containing adaptor protein that interacts with the death domain of TNF-alpha receptor 1 to activate mitogen-activated protein kinase (MAPK) and propagate the apoptotic signal. It is membrane-bound and expressed at a higher level in neoplastic cells than in normal cells. Several transcript variants encoding different isoforms have been described for this gene. [provided by RefSeq, Jul 2008]