

## Product datasheet for **RG227202**

### **XPR1 (NM\_001135669) Human Tagged ORF Clone**

#### **Product data:**

Product Type:	Expression Plasmids
Product Name:	XPR1 (NM_001135669) Human Tagged ORF Clone
Tag:	TurboGFP
Symbol:	XPR1
Synonyms:	IBGC6; SLC53A1; SYG1; X3
Mammalian Cell Selection:	Neomycin
Vector:	pCMV6-AC-GFP (PS100010)
E. coli Selection:	Ampicillin (100 ug/mL)



[View online »](#)

**ORF Nucleotide Sequence:**

>RG227202 representing NM\_001135669  
 Red=Cloning site Blue=ORF Green=Tags(s)

TTTTGTAATACGACTCACTATAGGGCGGCCGGAATTCGTCGACTGGATCCGGTACCGAGGAGATCTGCC  
 GCC**CGGATCGCC**

ATGAAGTTCGCCGAGCACCTCTCCGCGCACATCACTCCCGAGTGGAGGAAGCAATACATCCAGTATGAGG  
 CTTTCAAGGATATGCTGTATTCAGCTCAGGACCAGGCACCTTCTGTGGAAGTTACAGATGAGGACACAGT  
 AAAGAGGTATTTTCCAAGTTTGAAGAGAAGTTTTTCCAACCTGTGAAAAAGAAGTTGCCAAAATCAAC  
 ACATTTTATTCAGAGAAGCTCGCAGAGGCTCAGCGCAGGTTTGTACTACACTTCAGAATGAGCTTCAGTCAT  
 CACTGGATGCACAGAAAGAAAGCACTGGTGTACTACGCTGCGACAACGCAGAAAGCCAGTCTTCCACTT  
 GTCCCATGAGGAACGTGTCCAACATAGAAATATTAAGACCTTAACTGGCCTTCAGTGAGTTCTACCTC  
 AGTCTAATCCTGCTGCAGAACTATCAGAATCTGAATTTACAGGGTTTCGAAAAATCCTGAAAAAGCATG  
 ACAAGATCCTGGAACATCTCGTGGAGCAGATTGGCGAGTGGCTCACGTAGAGGTGGCCCCATTTATAC  
 ATGCAAGAAAATCAACCAGCTTATCTCTGAAACTGAGGCTGTAGTGACCAATGAAGTTGAAGATGGTGAC  
 AGACAAAAGGCTATGAAGCGTTTACGTGTCCCCCTTTGGGAGCTGCTCAGCCTGCACCAGCATGGACTA  
 CTTTTAGAGTTGGCCTATTTTGTGGAATATTCATTGTAAGTATTACCTTGTGCTTGGCCGTGTATT  
 TAAACTTGAAACAGATAGAAGTATATGGCCCTTGATAAGAATCTATCGGGGTGGCTTTCTTCTGATTGAA  
 TTCCTTTTCTACTGGGCATCAACACGTATGGTTGGAGACAGGCTGGAGTAAACCATGACTCATCTTTG  
 AACTTAATCCGAGAAGCAATTTGTCTCATCAACATCTCTTTGAGATTGCTGGATTCTCGGGATATTGTG  
 GTGCCTGAGCCTTCTGGCATGCTTCTTTGCTCCAATTAGTGTATCCCCACATATGTGTATCCACTTGCC  
 CTTTATGGATTTATGGTTTTCTCTTATCAACCCACCAAACTTTCTACTATAAATCCCGTTTTGGC  
 TGCTTAAACTGCTGTTTCGAGTATTTACAGCCCCCTTCCATAAGGTAGGCTTTGCTGATTCTGGCTGGC  
 GGATCAGCTGAACAGCCTGTCACTGATACTGATGGACCTGGAATATATGATCTGCTTCTACAGTTTGGAG  
 CTCAAATGGGATGAAAGTAAAGGCTGTTGCCAATAATTCAGAAGAACGAGGTCCTCGGACACTATGG  
 TGTCTTTTACCTGTGGATTGTCTTTTATATCATCAGTTCCTGCTATACCCTCATCTGGGATCTCAAGT  
 GGACTGGGGTCTCTCGATAAGAATGCTGGAGAGAACACTTTCTCCGGGAAGAGATTGTATACCCCAA  
 AAAGCCTACTACTACTGTGCCATAATAGAGGATGTGATTCTGCGCTTTGCTTGGACTATCCAAATCTCGA  
 TTACCTCTACAACCTTTGTGCTCATTCTGGGACATCATTGCTACTGTCTTTGCCCCACTTGAGGTTTT  
 CCGGCGATTTGTGTGAACTTCTCCGCTGGAGAATGAACATCTGAATAACTGTGGTGAATCCCGTGT  
 GTGCGGGACATCTCTGTGCCCCCTGAACGCAGATGATCAGACTCTCCTAGAACAGATGATGGACCAGG  
 ATGATGGGGTACGAAACGCCAGAAGAATCGGTATGGAAGTACAACCAGAGCATATCCCTGCGCCGGCC  
 TCGCCTCGCTTCAATCCAAGGCTCGTGACACTAAGGTATTGATAGAAGACACAGATGATGAAGCTAAC  
 ACT

**ACGCGT**ACGCGGCCGCTCGAG – GFP Tag – GTTTAA

**Protein Sequence:**

>RG227202 representing NM\_001135669  
 Red=Cloning site Green=Tags(s)

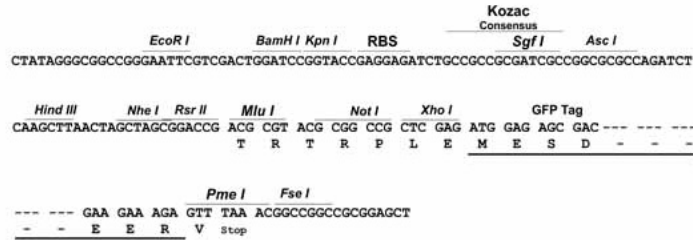
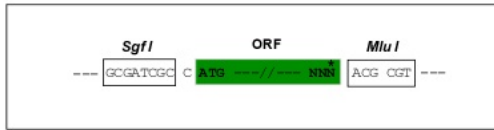
MKFAEHLSAHITPEWRKQYIQYEAFKDMLYSAQDQAPSVEVTDEDTVKRYFAKFEKFFQTCEKELAKIN  
 TFYSEKLAEARRFATLQNELQSSLDAQKESTGVTTLRQRKPVFHL SHEERVQHRNIKDLKAFSEFYI  
 SLILLQNYQNLNFTGFRKILKHKDKILETSRGADWRVAHVEVAPFYTCCKINQLISETEAVVTNELEDG  
 RQKAMKRLRVPPLGAAQPAPAWTFRVGLFCGIFIVLNITLVLA AVFKLETDRSIWPLIRIYRGGFLIE  
 FLFLLGINTYGWRQAGVNHVLI FELNPRSNLSHQHLFEIAGFLGILWCLL LACFFAPISVIPTYVYPLA  
 LYGMVFFLINPKTFYKSRFLLKLLFRVFTAPFHKVGFADFWLADQLNSLSVILMDLEYMICYFYLE  
 LKWDESKGLLPNNSEERGHSDTMVFFYLWIVFYIISSCYTLIWDLKMDWGLFDKNAGENTFLREEIYYPQ  
 KAYYYCAIIEDVILRFAWTIQISITSTLLPHSGDIIATVFAPLEVFRFVWNFFRLENEHLNCCGEFRA  
 VRDISVAPLNADDQTLLEQMQDDGVRNRQKNRSWKYNQSI SLRRPRLASQSKARDTKVLIEDTDEAN  
 T

**TRTRPLE** – GFP Tag – V

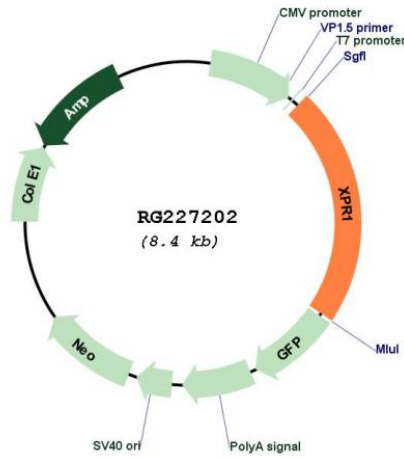
Restriction Sites: SgfI-MluI

Cloning Scheme:

Cloning sites used for ORF Shutting:



Plasmid Map:



ACCN: NM\_001135669

ORF Size: 1893 bp

<b>OTI Disclaimer:</b>	<p>Due to the inherent nature of this plasmid, standard methods to replicate additional amounts of DNA in E. coli are highly likely to result in mutations and/or rearrangements. Therefore, OriGene does not guarantee the capability to replicate this plasmid DNA. Additional amounts of DNA can be purchased from OriGene with batch-specific, full-sequence verification at a reduced cost. Please contact our customer care team at <a href="mailto:custsupport@origene.com">custsupport@origene.com</a> or by calling 301.340.3188 option 3 for pricing and delivery.</p> <p>The molecular sequence of this clone aligns with the gene accession number as a point of reference only. However, individual transcript sequences of the same gene can differ through naturally occurring variations (e.g. polymorphisms), each with its own valid existence. This clone is substantially in agreement with the reference, but a complete review of all prevailing variants is recommended prior to use. <a href="#">More info</a></p>
<b>OTI Annotation:</b>	<p>This clone was engineered to express the complete ORF with an expression tag. Expression varies depending on the nature of the gene.</p>
<b>Components:</b>	<p>The ORF clone is ion-exchange column purified and shipped in a 2D barcoded Matrix tube containing 10ug of transfection-ready, dried plasmid DNA (reconstitute with 100 ul of water).</p>
<b>Reconstitution Method:</b>	<ol style="list-style-type: none"><li>1. Centrifuge at 5,000xg for 5min.</li><li>2. Carefully open the tube and add 100ul of sterile water to dissolve the DNA.</li><li>3. Close the tube and incubate for 10 minutes at room temperature.</li><li>4. Briefly vortex the tube and then do a quick spin (less than 5000xg) to concentrate the liquid at the bottom.</li><li>5. Store the suspended plasmid at -20°C. The DNA is stable for at least one year from date of shipping when stored at -20°C.</li></ol>
<b>RefSeq:</b>	<a href="#">NM_001135669.2</a>
<b>RefSeq Size:</b>	8305 bp
<b>RefSeq ORF:</b>	1896 bp
<b>Locus ID:</b>	9213
<b>UniProt ID:</b>	<a href="#">Q9UBH6</a>
<b>Cytogenetics:</b>	1q25.3
<b>Protein Families:</b>	Druggable Genome, Transmembrane
<b>Gene Summary:</b>	<p>The protein encoded by this gene is a receptor for the xenotropic and polytropic classes of murine leukemia viruses. The encoded protein is involved in phosphate homeostasis by mediating phosphate export from the cell. Defects in this gene have been associated with idiopathic basal ganglia calcification-6. [provided by RefSeq, Jun 2016]</p>