

Product datasheet for **RG227171**

PCDH15 (NM_001142772) Human Tagged ORF Clone

Product data:

Product Type:	Expression Plasmids
Product Name:	PCDH15 (NM_001142772) Human Tagged ORF Clone
Tag:	TurboGFP
Symbol:	PCDH15
Synonyms:	CDHR15; DFNB23; USH1F
Mammalian Cell Selection:	Neomycin
Vector:	pCMV6-AC-GFP (PS100010)
E. coli Selection:	Ampicillin (100 ug/mL)
ORF Nucleotide Sequence:	>RG227171 representing NM_001142772 Red=Cloning site Blue=ORF Green=Tags(s)

TTTTGTAATACGACTCACTATAGGGCGGCCGGAATTCGTCGACTGGATCCGGTACCGAGGAGATCTGCC
GCC**CGATCGCC**

ATGTTTCGACAGTTTTATCTCTGGACATGTTTAGCTTCAGGGATCATCCTGGGCTCTCTTTGAAATCT
GCTTGGGCCAGTATGATGATGATTGCAAAGTAGCTAGGGGAGGACCACCAGCTACCATAGTTGCTATTGA
TGAAGAAAGTCGGAATGGTACAATTCTGGTGGACAACATGCTGATCAAAGGGACTGCTGGAGGACCAGAC
CCCACCATAGAAGTTCTTTAAAGGATAATGTGGATTACTGGGTGTTGATGGATCCTGTTAAGCAAATGC
TTTTCTGAACAGCACCGGAAGAGTTCTGGATAGAGATCCACCGATGAACATACTCCATTGTGGTGCA
GGTCCAGTGCATCAACAAAAAGTGGGCACTATTATCTACCATGAAGTGGCAATAGTGGTGAAGACAGG
AATGACAACCTCACCCACTTTCAAGCATGAAAGCTACTATGCCACAGTGAATGAGCTCACTCCAGTTGGTA
CCACAATATTCACAGGATTTTCAGGAGACAATGGAGCTACAGATATAGATGATGGACCAATGGACAGAT
AGAGTATGTTATTCAGTATAATCCAGATGATCCGACATCCAATGACACCTTTGAAATTCCTTAATGTTG
ACTGGAATATAGTGTTAAGGAAGAGGCTCAACTATGAAGATAAGACTCGCTACTTTGTCATAATCCAAG
CTAATGACCGTGCCAAAATCTGAATGAGAGGCGAACCACCACCACCTCTCACAGTGGATGTTCTGGA
TGGAGATGACTTGGTCCAATGTTTCTTCTTGTGCTTGTGCCAAACTCGTGATTGCCGTCACCTC
ACTTATCAAGCTGCCATACCTGAGTTGAGAATCCGGAAGAAGTGAACCCATTATTGTTACGCCACCA
TCCAAGCATTGATCAGGACCGGAATATTCAACCGCCATCAGATAGGCCAGGAATCCTCTATTCCATCCT
TGTGGGACTCCTGAGGATTACCCACGATTTTTCCATATGCATCCTAGGACAGCAGAAGTTAGTCTCCTG
GAGCCAGTAAACAGAGACTTTCACCAGAAATTTGATTTGGTTATTAAGGCTGAACAAGACAATGGTCATC
CTCTTCTGCCTTTGCCGGTCTACACATGAAATACTGGATGAAAACAATCAAAGTCCATATTTTACAAT
GCCAGTTATCAAGGCTATATCCTGGAATCTGCCCGAGTGGGAGCAACCATTTCCGACAGTCTCAATTTG
ACTTCACCTTTAAGAATAGTAGCTCTGGACAAGGACATAGAAGATACAAAAGACCAGAGCTTACCTTTT
TTCTGAATGACTACACCTCAGTCTTCCCGTACACAGACTGGTATTACTCGCTACCTCACCTTACTTCA
ACCAGTGGACAGGAAGAAGCAAACTTACACCTTTTCGATAACAGCATTGATGGTGTACAAGAAAGT



GAGCCAGTCATCGTCAATATTC AAGTGTGGATGCAAATGATAACACGCCAACCTTCCCTGAAATATCCT
ATGATGTGTATGTTTATACAGACATGAGACCTGGGGACAGTGTACATACAGCTCACTGCAGTCGACGCAGA
CGAAGGGTCAAATGGGGAGATCACATATGAAATCCTTGTGGGGCTCAGGGAGACTTCATCATCAATAAA
ACAACAGGGCTTATCACCATCGCTCCAGGGGTGGAATGATAGTCGGGGGACTTACGCACTCACGGTCC
AAGCAGCGGATAATGCTCCTCCTGCAGAGCGAAGGAACCCATCTGCAGTGTGTATTTGAAGTGCCTCC
ACCAAATAATCAAAGCCCTCCTCGCTCCACAGCTGATGTATAGCCTTGAAATAGTGAAGCCATGAGG
GTTGGTGTGTTTTATTAATCTACAGGCAACTGATCGAGAGGGAGACTCAATAACATATGCCATGGA
ATGGAGATCCTCAGAGAGTTTTTAAATCTTTCAGAAACCAGGGGATTCTAACCTTAGGGAAGCACTGGA
CAGGGAAAGCACTGATCGCTACATTCTGATCATCACAGCTTCAGATGGCAGGCCAGATGGGACCTCAACT
GCCACAGTAAACATAGTGGTGACAGATGTCAATGACAATGCTCCAGTGTGGATCCTTATCTGCCAAGAA
ATTTATCTGTGGTGAAGAAGAAGCCAATGCCTTTGTGGGTCAAGTAAAAGCAACAGACCCTGATGCTGG
AATAAATGGTCAAGTGCAGTACAGTTTGGGTAACCTTAAATCTTTTTTCGATCACATCCAATGGGAGC
ATTTACACAGCAGTGAAGCTTAAACAGAGAAGTCAGGGACTACTATGAACTGTTGTTGTGGCAACAGATG
GAGCAGTACACCCTCGTCATTCAACTCTAACCTTGGCCATCAAGGTTTTGGACATTGATGATAACAGTCC
TGTGTTACCAATTCAACATACACTGCTCTGTTGAAGAGAATTTGCCAGCTGGGACTACCATCCTTCAA
ATAGAGGGCAAAGATGTCGACCTTGGAGCAAATGTGCTTACCGGATAAGAAAGCCAGAAGTGAAGCACT
TTTTTGCACTACATCCATTTACAGGAGAACTATCGCTTTTAAGGAGTTTAGATTATGAGGCAATTTCCAGA
CCAAGAAGCAAGTACACTTTTCTGGTAGAGGCCCTTGTATTTATGGAACAATGCCACCTGGTATTGCT
ACTGTCACAGTGAATGTAAGGATATGAATGATTATCCTCCTGCTTTAGTAAACGAATATACAAAGGGA
TGGTGGCTCCGGATGCAGTCAAGGGTACACCTATCACACAGTTTATGCTGAAGATGCAGACCCTCCTGG
ATTACCTGCAAGTCGTGTGAGGTATAGAGTAGATGTACAGTTTCTTACCCTGCCAGTATTTTTGAA
GTGGAAGAAGATTCTGGAAGAGTAAACACGAGTCAATCTTAAATGAAGAACCTACAACAATTTTTAAGT
TGGTGGTGGTTGCTTTTGTGATGATGGGGAGCCTGTGATGCCAGCAGTCCACAGTGAAGATTCTTGTCTT
ACATCCTGGTGAGATCCCACGCTTACACAGGAGGAATATAGACCTCCTCCAGTAAAGTAACTTGGCCACC
AAAGGGACCATGTTGGTGAATTTCTGCTGCTGCCATTAATCAAAGTATTGTGTACTCCATTGTTTCAG
GAAATGAAGAAGATACATTTGGAATTAATAACATCACAGGTGTTATCTATGTGAATGGACCTCTGGATTA
TGAGACCAGGACAAGCTATGTACTTCGAGTCCAAGCTGATTCCTGGAAGTGGTCTTGGCAATCTCCGA
GTTCTTCAAAGCAATACAGCTAAAGTATACATTTGAGATTGAGGATGAAAATAATCATCCCCAGTGT
TTCAGAAAAAATCTACATCGGAGGTGTATCTGAAGATGCAAGAATGTTTACTTCTGACTCAGAGTGAA
GGCTACTGATAAAGATACTGGCAATTATAGTGTACATGGCCTACAGACTCATAATACCACCAATTAAGAG
GGAAAAGAAGGATTTGTAGTGGAAACATATACAGGGCTTATCAAACCTGCTATGCTCTTCCATAATATGA
GGAGATCCTACTTCAAGTTTCAAGTTATTGCAACTGACGACTATGGGAAGGGACTGAGCGGCAAAGCCGA
TGTAATCGTCTCCGTTGGTCAATCAGCTGGATATGCAAGTCAATGTTTCCAATGTGCTCCTACTCTAGTG
GAAAAAAGATAGAAGATCTTACAGAGATCTTGGATCGCTATGTTGAGGAACAAATCCTGGTGCCAAGG
TCGTAGTGGAGTCCATTGGAGCTCGCCGGCATGGAGATGCCTTTTCCCTAGAAGATTACACCAATGTGA
CTTGACTGTCTATGCAATTGACCCCAAACCAACAGAGCCATCGATAGAATGAGCTTTTTAAATTTTTG
GATGGCAAACACTTGTATCAATAAAGACTTTCAGCCGATTATGGGGAAGGAGGACGCATTCTGGAGA
TCCGGACTCCAGAGGCAGTGACCAGCATTAAAAAGAGAGGAGAAAGTCTAGGATACACAGAAGGGGCCTT
GTTGGCTCTGGCCTTCAATCATCCTCTGCTGCATTCTGCCATCTTGGTGGTTTTGGTCACTACAGA
CAGTTTTAAAGTACGTCAAGCTGAGTGTACAAGACTGCACGAATTCAGGCCGATTACCCGCGGCTAAAC
CAGCAGTGCCGGCTCCTGCACCAGTGGCAGCGCCCCGCGCCGCGCCCTCCGCCAGGTGCGCATCT
CTATGAAGAACTTGGAGACAGCTCAATGCATAAGTATGAAATGCCTCAATATGGGAGTCGCCGTCGATTG
TTACCACCAGCTGGACAGGAGGAATATGGTGAAGTGGTGGTGAAGCTGAGGAAGAATATGAGGAGGAAG
AGTGGGCAAGAAAAAGAATGATCAAGTTAGTTGTTGATCGAGAGTATGAAACCAGCTCAACTGGAGAAGA
CAGTGTCTCCTGAATGTCAGAGAAACCGTCTTACCATCCTAGTATCCACAGTAATATCAACGGCAATATA
TATATTGCACAGAATGGTCTGTGGTGAGAACCCGCGCTGCCTCACGGACAACCTAAAAGTTGCTT
CCCCTGTTGACTGGGAGGGCCCTTAAAGAACTAGACAAGTTGGCAGTGACACATGAGGAGAATGTACC
TCTGAACACATTATCAAAGGGGCCATTTTCTACTGAAAAAATGAATGCAAGACCAACTCTGGTTACATTT
GCCCTTGGCCTGTGGGACTGACAATACAGCGGTGAAGCCACTAAGGAACAGGCTGAAAAGCACAGTTG
AACAGGAGTCCATGATTGACAGTAAGAACATCAAGGAGGCTTTGGAATTTATAGTGACCACACACAGTC
TGATGATGAAGAGCTTTGGATGGGCCCTTGAACAACCTCCATATACCAATGACAAAACCTG

ACGCGTACGCGGCCGCTCGAG - GFP Tag - GTTTAA

Protein Sequence:

>RG227171 representing NM_001142772
 Red=Cloning site Green=Tags(s)

MFRQFYLWTLASGIILGSLFEICLGQYDDDKLARGGPPATIVAIDEE SRNGTILVDNMLIKGTAGGPD
 PTIELSLKDNVDYWLMDPVKQMLFLNSTGRVLRDPPMNIHSIVVQVCINKKVGTTIIYHEVRIVVRDR
 NDNSPFKHESYATVNELTPVGTITFTGFSGDNGATDIDDGPNQIEYVIQYNPDPTSNDTFEIPLML
 TGNIVLRKRLNYEDKTRYFVIIQANDRAQNLNERRTTTTLTVDVLGDGDLGPMFLPCVLPNTRDCRPL
 TYQAAIPELRTPEELNPIIVTPPIQAIDQDRNIQPPSDRPGILYSILVGTPEDYPRFFHMHPRTAELSL
 EPVNRDFHQKFDLVIAEQDNGHPLPAFAGLHIEILDENNQSPYFTMPSYQGYILESAPVGATISDSLNL
 TSPLRIVALDKDIEDTKDPELHLFLNDYTSVFTVTQTGITRYL TLLQPDVREEQQTTFYSITAFDGVQES
 EPVIVNIQVMDANDNPTTFPEISYDVVYVYDMRPGDSVIQLTAVDADEGSNGEITYEILVGAQGFINK
 TTGLITIA PGVEMIVGRTYALTVAADNAPPAERRNSICTVYIEVLPNNQSPPRFPQLMYSLEISEAMR
 VGAVLLNLQATDREGDSITYAIEGNDPQRVFNLSETTGILTLGKALDRESTDRYILIIITASDGRPDGTST
 ATVINIVYVTDVNDNAPVFDPPYLPRLNSVVEEANA FVGQVKATDPDAGINGQVHYSLGNFNFRITSNGS
 IYTAVKLNREVRDYELVVVATDGAVHPRHSTLTLAIKVL DIDDNSPVFTNSTYTVLVEENLPAGTTILQ
 IEAKDVLGANVSYRIRSPVKHFFALHPFTGELSLRSLDYEAFPDQEASITFLVEAFDIYGTMPGIA
 TVTVIVKDMNDYPPVFSKRIYKGMVAPDAVKGTPITTVYAEDADPPGLPASRVRYRVDVQFPYPASIFE
 VEEDSGRIVITRVNLNEEPTTIFKLVVAFDDGEPVMSSATVKILV LHPGEIPRFQEEYRPPVSELAT
 KGTMVGVISAAAINQSI VYSIVSGNEEDTFGINNITGVIYVNGPLDYETRTSYVLRVQADSLEVLANLR
 VPSKSNTAKVYIEIQDENNHPPVFQKKFYIGGVSE DARMFTSVLRVKATDKDTGNYSVMAYRLIIPPIKE
 GKEGFVVEYTGLIK TAML FHNMRRSYFKFQVIATDDY GKGKSGKADVLVS VVNQLDMQVIVSNVPTLV
 EKKIEDLTEILDRYVQE QIPGAKVVVESIGARRHGDAF SLEDYTKCDLTVY AIDPQTNRAIDRNELFKFL
 DGKLLDINKDFQPYGEGGRILEIRTPEAVTSIKKRGESLGYTEGALLALAFIIILCCIPAILVVLVSYR
 QFKVRAECTKTARIQAALPAKPAVPAPAPVAAPPPPPPPG AHLYEELGDSSMHK YEMPQYGSRRRL
 LPPAQEEYGEVGEAE EEEEEEWARKRMIKL VVDREYETSSTGEDSAPECQRNRLHHPHSIHSNINGNI
 YIAQNGSVVRRRACLTDNLKVASPVRLGGPFKKL DKLAVTHEENVLNTLSKGPFS TEKMNRPTLVTF
 APCPVGTDNTAVKPLRNRLKSTVEQESMIDSKNIKEAL EHFSDHTQSDDEELWMPWNHLHIPMTKL

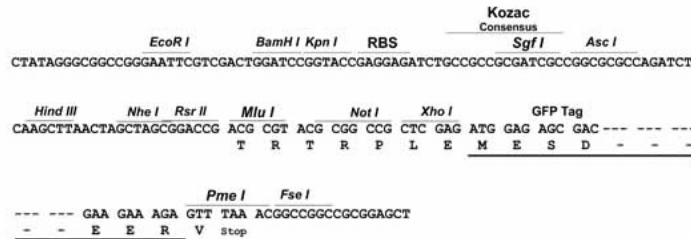
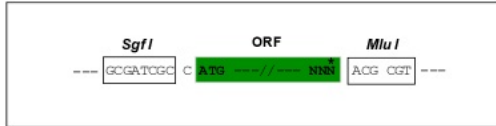
TRTRPLE - GFP Tag - V

Restriction Sites:

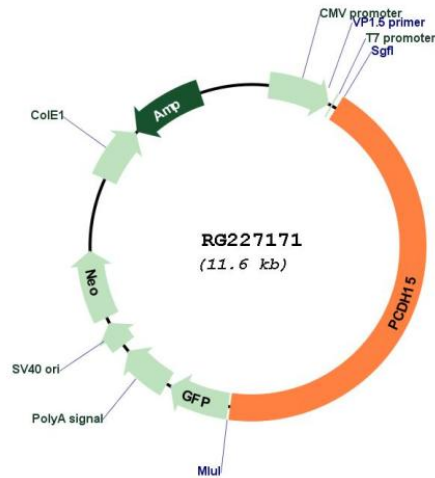
Sgfl-MluI

Cloning Scheme:

Cloning sites used for ORF Shutting:



Plasmid Map:



ACCN: NM_001142772

ORF Size: 5031 bp

OTI Disclaimer: The molecular sequence of this clone aligns with the gene accession number as a point of reference only. However, individual transcript sequences of the same gene can differ through naturally occurring variations (e.g. polymorphisms), each with its own valid existence. This clone is substantially in agreement with the reference, but a complete review of all prevailing variants is recommended prior to use. [More info](#)

OTI Annotation: This clone was engineered to express the complete ORF with an expression tag. Expression varies depending on the nature of the gene.

Components: The ORF clone is ion-exchange column purified and shipped in a 2D barcoded Matrix tube containing 10ug of transfection-ready, dried plasmid DNA (reconstitute with 100 ul of water).

Reconstitution Method:

1. Centrifuge at 5,000xg for 5min.
2. Carefully open the tube and add 100ul of sterile water to dissolve the DNA.
3. Close the tube and incubate for 10 minutes at room temperature.
4. Briefly vortex the tube and then do a quick spin (less than 5000xg) to concentrate the liquid at the bottom.
5. Store the suspended plasmid at -20°C. The DNA is stable for at least one year from date of shipping when stored at -20°C.

RefSeq: [NM_001142772.2](#)

RefSeq Size: 9237 bp

RefSeq ORF: 5034 bp

Locus ID: 65217

Cytogenetics: 10q21.1

Protein Families: Druggable Genome, Transmembrane

Gene Summary: This gene is a member of the cadherin superfamily. Family members encode integral membrane proteins that mediate calcium-dependent cell-cell adhesion. It plays an essential role in maintenance of normal retinal and cochlear function. Mutations in this gene result in hearing loss and Usher Syndrome Type IF (USH1F). Extensive alternative splicing resulting in multiple isoforms has been observed in the mouse ortholog. Similar alternatively spliced transcripts are inferred to occur in human, and additional variants are likely to occur. [provided by RefSeq, Dec 2008]