

Product datasheet for **RG227134**

Glucose Transporter 5 GLUT5 (SLC2A5) (NM_001135585) Human Tagged ORF Clone

Product data:

| | |
|---------------------------|--|
| Product Type: | Expression Plasmids |
| Product Name: | Glucose Transporter 5 GLUT5 (SLC2A5) (NM_001135585) Human Tagged ORF Clone |
| Tag: | TurboGFP |
| Symbol: | Glucose Transporter 5 GLUT5 |
| Synonyms: | GLUT-5; GLUT5 |
| Mammalian Cell Selection: | Neomycin |
| Vector: | pCMV6-AC-GFP (PS100010) |
| E. coli Selection: | Ampicillin (100 ug/mL) |
| ORF Nucleotide Sequence: | >RG227134 representing NM_001135585 Red=Cloning site Blue=ORF Green=Tags(s) |

TTTTGTAATACGACTCACTATAGGGCGGCCGGAATTCGTCGACTGGATCCGGTACCGAGGAGATCTGCC
GCC**CGATCGCC**

ATGGAGCAACAGGATCAGAGCATGAAGGAAGGGAGGCTGACGCTTGTGCTTGCCCTGGCAACCCTGATAG
CTGCCTTTGGGTCATCCTTCCAGTATGGGTACAACGTGGCTGCTGCAACTCCCCAGCACTGCTCATGCA
ACAATTTACAATGAGACTTACTATGGTAGGACCGGTGAATTCATGGAAGACTTCCCCTTGACGTTGCTG
TGGTCTGTAACCGTGTCCATGTTCCATTTGGAGGTTTATCGGATCCCTCCTGGTCGGCCCTTGGTGA
ATAAATTTGGCAGAAAAGGGCCTTGCTGTTCAACAACATATTTCTATCGTGCCTGCGATCTTAATGGG
ATGCAGCAGAGTCGCCACATCATTTGAGCTTATCATTATTTCCAGACTTTTGGTGGGAATATGTGCAGGT
GTATCTTCCAACGTGGTCCCCATGTACTTAGGGGAGCTGGCCCCAAAAACCTGCGGGGGGCTCTCGGGG
TGGTGCCCCAGCTCTTCACTGTTGGCATCCTTGTGGCCAGATCTTTGGTCTTCGGAATCTCCTTGC
AAACGTAGATGGTGAGTTCAGGACATCTCGGGAGCACCCACCCTTACCCTACCCCTTGGCCCCCTC
CTTGTGTTCAAAGCCACCACAGGACAGGACTTTCTGCACTGGTCTTTTAACAGGCTGGATGT
CCTTGGGGGGCCCATCTGTCCCGAGCCAACA

ACGCGTACGCGGCCGCTCGAG - GFP Tag - GTTTAA



[View online »](#)

Protein Sequence: >RG227134 representing NM_001135585
 Red=Cloning site Green=Tags(s)

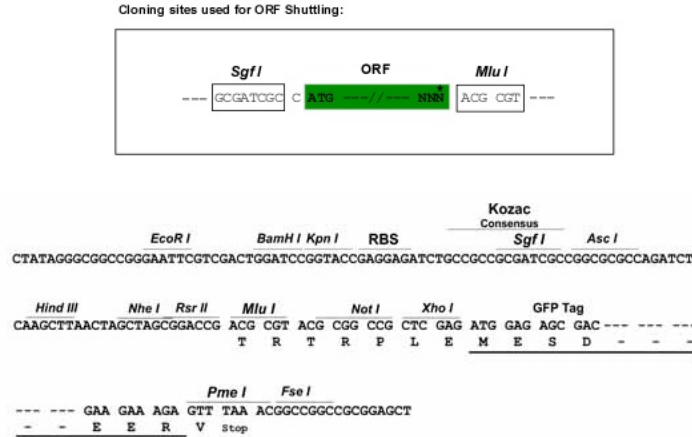
MEQQDQSMKEGRLTLVLALATLIAAFGSSFQYGYNVAAVNSPALLMQQFYNETYYGRTGEFMEDFPLTLL
 WSVTVSMFPFGGFIGSLLVGPLVNKFRKGALLFNNIFSIVPAILMGCSRVSFELIIISRLLVGICAG
 VSSNVVPMYLGELAPKNLRGALGVVPQLFITVGIQIFGLRNLNLANVDGEFRTSREHPHPFTTTLGPL
 LVFQSHHHRTGLSADWSLLTGWMSLGGPSCPEPT

TRTRPLE - GFP Tag - V

Chromatograms: https://cdn.origene.com/chromatograms/ja1878_e07.zip

Restriction Sites: SgfI-MluI

Cloning Scheme:



ACCN: NM_001135585

ORF Size: 732 bp

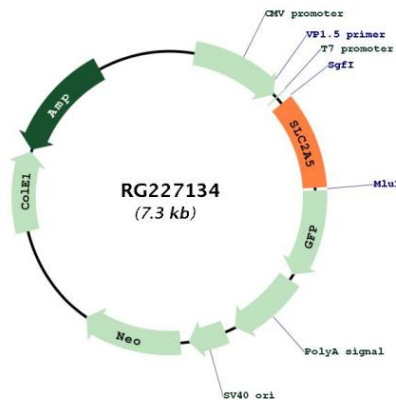
OTI Disclaimer: Due to the inherent nature of this plasmid, standard methods to replicate additional amounts of DNA in E. coli are highly likely to result in mutations and/or rearrangements. Therefore, OriGene does not guarantee the capability to replicate this plasmid DNA. Additional amounts of DNA can be purchased from OriGene with batch-specific, full-sequence verification at a reduced cost. Please contact our customer care team at custsupport@origene.com or by calling 301.340.3188 option 3 for pricing and delivery.

The molecular sequence of this clone aligns with the gene accession number as a point of reference only. However, individual transcript sequences of the same gene can differ through naturally occurring variations (e.g. polymorphisms), each with its own valid existence. This clone is substantially in agreement with the reference, but a complete review of all prevailing variants is recommended prior to use. [More info](#)

OTI Annotation: This clone was engineered to express the complete ORF with an expression tag. Expression varies depending on the nature of the gene.

- Components:** The ORF clone is ion-exchange column purified and shipped in a 2D barcoded Matrix tube containing 10ug of transfection-ready, dried plasmid DNA (reconstitute with 100 ul of water).
- Reconstitution Method:**
1. Centrifuge at 5,000xg for 5min.
 2. Carefully open the tube and add 100ul of sterile water to dissolve the DNA.
 3. Close the tube and incubate for 10 minutes at room temperature.
 4. Briefly vortex the tube and then do a quick spin (less than 5000xg) to concentrate the liquid at the bottom.
 5. Store the suspended plasmid at -20°C. The DNA is stable for at least one year from date of shipping when stored at -20°C.
- RefSeq:** [NM_001135585.2](#)
- RefSeq Size:** 1280 bp
- RefSeq ORF:** 735 bp
- Locus ID:** 6518
- UniProt ID:** [P22732](#)
- Cytogenetics:** 1p36.23
- Protein Families:** Transmembrane
- Gene Summary:** The protein encoded by this gene is a fructose transporter responsible for fructose uptake by the small intestine. The encoded protein also is necessary for the increase in blood pressure due to high dietary fructose consumption. [provided by RefSeq, Jun 2016]

Product images:



Circular map for RG227134