

Product datasheet for **RG227126**

TOM1 (NM_001135729) Human Tagged ORF Clone

Product data:

Product Type:	Expression Plasmids
Product Name:	TOM1 (NM_001135729) Human Tagged ORF Clone
Tag:	TurboGFP
Symbol:	TOM1
Mammalian Cell Selection:	Neomycin
Vector:	pCMV6-AC-GFP (PS100010)
E. coli Selection:	Ampicillin (100 ug/mL)



[View online »](#)

ORF Nucleotide Sequence:

>RG227126 representing NM_001135729
 Red=Cloning site Blue=ORF Green=Tags(s)

TTTTGTAATACGACTCACTATAGGGCGGCCGGAATTCGTCGACTGGATCCGGTACCGAGGAGATCTGCC
 GCC**CGATCGCC**

ATGGACTTTCTCCTGGGAACCCGTTCCAGTCTCCAGTGGGACAGCGCATCGAGAAAGCCACAGATGGT
 CCCTGCAGAGCGAGGACTGGGCCCTCAACATGGAGATCTGCGACATCATCAACGAGACGGAGGAAGTCC
 CAAAGATGCCCTCCGAGCAGTAAAGAAGAGAATCGTGGGAATAAGAACTTCCACGAGGTGATGCTGGT
 CTCACAGTCTTAGAAACCTGTGTCAAGAACTGCGGGCACCCTCCACGTGCTGGTGGCCAGCCAGGACT
 TCGTGGAGAGTGTGCTGGTGGAGACCATCTGCCAAGAACAACCCACCCACCATCGTGCATGACAAAGT
 GCTCAACCTCATCCAGTCTGGGCTGACGCGTCCGCGAGCTCGCCGATCTGACAGGTGTGGTACCATC
 TATGAGGACCTGCGGAGGAAAGGCTGGAGTCCCATGACTGACCTGGACATGCTGTACCCATCCACA
 CACCCAGAGGACCGTGTCAACTCAGAGACACAATCAGGACAGGATTCTGTGGGACTGACTCCAGCCA
 GCAAGAGGACTCTGGCCAGCATGTGCCCTCTGCCCGCCCGCCATACTCTCCGGTGACACGCCATA
 GCACCAACCCCGAACAGATTGGGAAGCTGCGCAGTGAGCTGGAGATGGTGGTGGGAACGTGAGGGTGA
 TGTCCGAGATGCTGACGGAGCTGGTGCCACCCAGGCCGAGCCCGAGACCTGGAGCTGTGCAGGAGCT
 CAACCGCACGTGCCGAGCCATGCAGCAGCGGTCTGGAGCTCATCCCTCAGATCGCAATGAGCAGCTG
 ACAGAGGAGCTGCTCATCGTCAATGACAATCTCAACAATGTGTTCTGCGCCATGAACGGTTTGAACGGT
 TCCGAACAGGCCAGACCACCAAGGCCCAAGTGGGCGGAGCCGCGAGCTGACCTGATCGACATGGGCC
 TGACCCAGCAGCCACCGCAACCTCTATCCAGCTGGCAGGAATGAACCTGGGCTCCAGCAGTGTGAGA
 GCTGGCCTGCAGTCTCTGGAGGCTCTGGTCCAGTGGAAAGATGAGTTTGACATGTTTGGCTGACACGGG
 GCAGCTACTGGCTGACCAACGGAAGAGTAAAATACGAAGCCCAAGCAACAGCAGCGCTGGCTGG
 AGCCCTGGACGCCCGGACGAGCAGACTGGCGCATCCAGTCAACCCAGGCTGCCTCATGGAGGACATC
 GAGCAGTGGCTGTCCACTGACGTGGTAATGATGCGGAAGAGCCTAAGGGGGTACCAGCGAAGGTAAT
 TTGACAAATTCCTGGAAGAACGGGCCAAAGCCGCGGACCGATTGCCAACCTCTCCAGCCCTCAGCTGA
 GGGGCCCCGGTCCCCATCTGGCCAGCGCCCGGAAGAAGCCAGGAGAAAGATGATGACATGCTG
 TTTGCCTTA

ACGGGCCGCTCGAG – GFP Tag – GTTTAA

Protein Sequence:

>RG227126 representing NM_001135729
 Red=Cloning site Green=Tags(s)

MDFLLGNPFSSPVGQRIEKATDGSLSQEDWALNMEICDIINETEEGPKDALRAVKKRIVGNKNFHEVMLA
 LTVLETCVKNCGHRFHVLVASQDFVESVLVRTILPKNNPPTIVHDKVLNLIQSWADAFRSPDLTGVVTI
 YEDLRRKGLEFPMTDLMLSPIHTPQRTVFNSETQSGQDSVGTDSQQEDSGQHAAPLPAPPILSGDTPI
 APTPEQIGKLRSELEMVSGNVRVMSEMLTEL VPTQAEPADLELLQELNRTCRAQQRVLELIPQIANEQL
 TEELLIVNDLNNVFLRHERFERFRGTGTTKAPSEAEPADLIDMGPDPAATGNLSSQLAGMNLGSSSVR
 AGLQSLASGRLEDFDMFALTRGSSLADQRKEVKYEAPQATDGLAGALDARQQSTGAIPVTAQCLMEDI
 EQWLSTDVGNDAEEPQVTSSEKFKDFLEERAKAADRLPNLSSPSAEGPPGPPSGPAPRKKTQEKDDML
 FAL

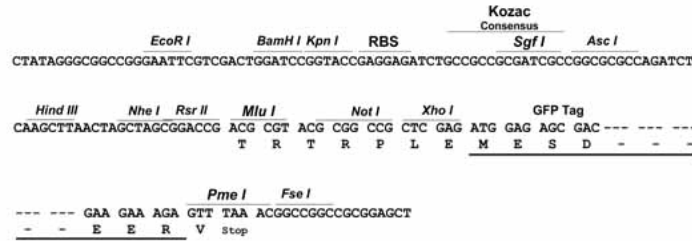
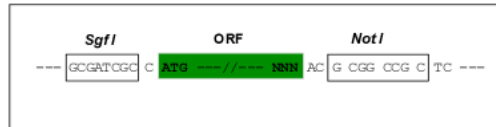
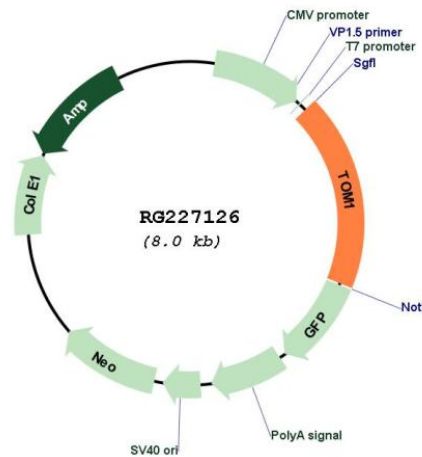
TRPLE – GFP Tag – V

Restriction Sites:

Sgfl-NotI

Cloning Scheme:

Cloning sites used for ORF Shuttling:


Plasmid Map:

ACCN: NM_001135729

ORF Size: 1482 bp

OTI Disclaimer: The molecular sequence of this clone aligns with the gene accession number as a point of reference only. However, individual transcript sequences of the same gene can differ through naturally occurring variations (e.g. polymorphisms), each with its own valid existence. This clone is substantially in agreement with the reference, but a complete review of all prevailing variants is recommended prior to use. [More info](#)
OTI Annotation: This clone was engineered to express the complete ORF with an expression tag. Expression varies depending on the nature of the gene.

Components: The ORF clone is ion-exchange column purified and shipped in a 2D barcoded Matrix tube containing 10ug of transfection-ready, dried plasmid DNA (reconstitute with 100 ul of water).

Reconstitution Method:	<ol style="list-style-type: none">1. Centrifuge at 5,000xg for 5min.2. Carefully open the tube and add 100ul of sterile water to dissolve the DNA.3. Close the tube and incubate for 10 minutes at room temperature.4. Briefly vortex the tube and then do a quick spin (less than 5000xg) to concentrate the liquid at the bottom.5. Store the suspended plasmid at -20°C. The DNA is stable for at least one year from date of shipping when stored at -20°C.
RefSeq:	<u>NM_001135729.1</u> , <u>NP_001129201.1</u>
RefSeq Size:	2326 bp
RefSeq ORF:	1383 bp
Locus ID:	10043
UniProt ID:	<u>O60784</u>
Cytogenetics:	22q12.3
Protein Families:	Druggable Genome
Gene Summary:	This gene was identified as a target of the v-myb oncogene. The encoded protein shares its N-terminal domain in common with proteins associated with vesicular trafficking at the endosome. It is recruited to the endosomes by its interaction with endofin. Several alternatively spliced transcript variants encoding different isoforms have been found for this gene. [provided by RefSeq, Oct 2008]