

Product datasheet for **RG227119**

RAD54 (RAD54L) (NM_001142548) Human Tagged ORF Clone

Product data:

| | |
|---------------------------|--|
| Product Type: | Expression Plasmids |
| Product Name: | RAD54 (RAD54L) (NM_001142548) Human Tagged ORF Clone |
| Tag: | TurboGFP |
| Symbol: | RAD54L |
| Synonyms: | hHR54; HR54; hRAD54; RAD54A |
| Mammalian Cell Selection: | Neomycin |
| Vector: | pCMV6-AC-GFP (PS100010) |
| E. coli Selection: | Ampicillin (100 ug/mL) |



[View online »](#)

ORF Nucleotide Sequence:

>RG227119 representing NM_001142548
 Red=Cloning site Blue=ORF Green=Tags(s)

TTTTGTAATACGACTCACTATAGGGCGGCCGGAATTCGTCGACTGGATCCGGTACCGAGGAGATCTGCC
 GCC**CGGATCGCC**

ATGAGGAGGAGCTTGGCTCCCAGCCAGCTGGCCAAGAGAAAACCTGAAGGCAGGTCTGTGATGATGAAG
 ACTGGCAACCTGGCCTAGTGACTCCTAGGAAACGAAATCCAGCAGTGAGACCCAGATCCAGGAGTGTTT
 CCTGTCTCCTTTTCGAAACCTTTGAGTCAGCTAACCAATCAACCACCTTGTCTGGACAGCAGTCAGCAT
 GAAGCATTTATTGAAGCATTGTCAAAGCCTTTCAAAGTCCCCATTCCAAATTATCAAGGTCCTCTGG
 GCTCTCGAGCATTGGGCCTGAAAAGGGCTGGGGTCCGCCGGGCCCTCCATGACCCCTGGAAAAAGATGC
 CTTGGTTCTGTATGAGCCTCCCCGCTGAGCGCTCATGACCAGCTGAAGCTTGACAAGGAGAAAACCTCT
 GTCATGTGGTTGTTGACCCTATTCTCAGTAAGGTTTTGCGGCCTCATCAGAGAGAGGGAGTGAAATTCC
 TGTGGGAGTGTGCACCAGTCGGCGCATCCCTGGCAGCCATGGTGCATCATGGTGATGAGATGGGCCCT
 AGGAAAGACGCTGCAGTGCATCACATTGATGTGGACACTTTACGCCAGAGTCCAGAGTGAAGCCAGAA
 ATTGACAAGGCAGTGGTGGTGTGCCTTCCAGCCTGGTGAAGAAGTGGTACAATGAGGTTGGGAAATGGC
 TCGGAGGGAGGATCCAACCTCTGGCCATCGATGGAGGATCTAAGGATGAAATAGACCAAAAAGCTGGAAAG
 ATTCATGAACCAGCGTGGAGCCAGGGTGTCTTCTCCCATCCTCATATTTCTATGAGACCTTCCGCCTT
 CATGTTGGAGTCTCCAGAAAGGAAGTGTGGTCTGGTCAATGTGACGAGGGACACAGGCTCAAGAAGT
 CTGAGAATCAGACTTACCAAGCCCTGGACAGCTTGAACACCAGCCGGCGGGTGTCTATCTCCGAACTCC
 CATCCAGAATGATCTGCTTGAGTATTTAGCTTGGTACATTTTGTAAATCCGGCATCCTAGGGACTGCC
 CATGAATCAAGAAGCATTGTAATTGCAATTTGAAGGGTGCAGACGCTGCTGCTAGTGAGGCAGACA
 GGCAGCTAGGAGAGGAGCGGCTGCGGGAGCTCACCAGCATTGTGAATAGATGCCTGATACGGAGGACTTC
 TGATATCCTTTCTAAATATCTGCCTGTGAAGATTGAGCAGGTCGTTTGTGTAGGCTGACACCCCTTCAG
 ACTGAGTTATACAAGAGTCTTCTGAGACAAGCCAAACCGCAGAAGAATTGCTTGAGGGCAAGATGAGTG
 TGTCTTCCCTTTCTCCATCACCTCGCTAAAGAAGCTTTGTAATCATCCAGCTCTAATCTATGATAAGTG
 TGTGGAAGAGGAGGATGGCTTTGTGGTGCCTGGACCTTCCCTCCTGGTTACAGCTCTAAGGCCCTG
 GAGCCCCAGCTGTCAGGTAAGATGCTGGTCTGGATTATATTCTGGCGGTGACCCGAAGCCGTAGCAGTG
 ACAAGTAGTGTGGTGTGAATTACACCAGACTTTGGATCTCTTTGAGAAGCTGTGCCGTGCCCGAAG
 GTACTTATACGTCGCCCTGGATGGCAGCATGTCCATTAAGAAGCGAGCCAAGGTTGTAGAACGCTTCAAT
 AGTCCATCGAGCCCTGACTTTGTCTTCATGCTGAGCAGCAAAGCTGGGGCTGTGGCCTCAATCTCATTG
 GGGCTAACCGGCTGGTCAATGTTGACCCTGACTGGAACCCAGCCAATGATGAACAAGCCATGGCCCGGT
 CTGGCGAGATGGTCAAAAGAAGACTTGCTATATCTACCGCTGCTGTCTGCAGGGACCATTGAGGAGAAG
 ATCTTCCAGCGTCAGAGCCACAAGAAGGCACTGAGCAGCTGTGTGGTGGATGAGGAGCAGGATGTAGAGC
 GCCACTTCTCTGGGCGAGTTGAAGGAGCTGTTATCCTGGATGAAGCTAGCCTCAGTGACACACATGA
 CAGGTTGCACTGCCGACGTTGTGTCAACAGCCGTGATCCGGCCACCCCTGATGGTTCTGACTGCACT
 TCAGACCTGGCAGGGTGAACCACTGCACTGATAAGTGGGGCTCCGGGATGAGGTACTCCAGGCTGCCT
 GGGATGCTGCCTCACTGCTATCACCTTCGCTTCCACCAGCGTTCTCATGAGGAGCAGCGGGCCCTCCG
 C

ACGCGTACGCGGCCGCTCGAG – GFP Tag – GTTTAA

Protein Sequence: >RG227119 representing NM_001142548
 Red=Cloning site Green=Tags(s)

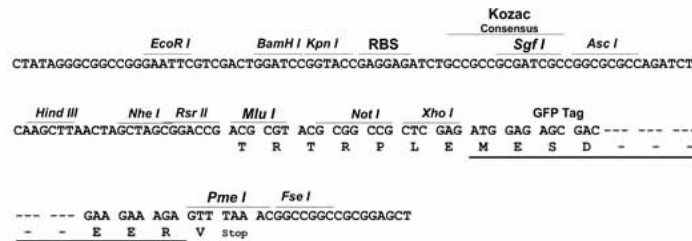
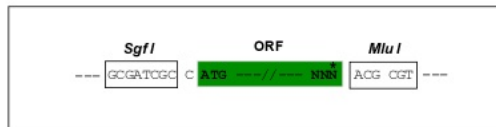
MRRSLAPSQLAKRKPEGRSCDDEDWQPGLVTPRKRKSSSETQIQECFLSPFRKPLSQLTNQPPCLDSSQH
 EAFIRSILSKPFKVPINPYQGPLGSRALGLKRAGVRRALHDPLEKDALVLYEPPPLSAHDQLKLDKEKLP
 VHVVDPIILSKVLRPHQREGVKFLWECVTSRRIPGSHGCIMADEMGLGKTLQCITLMWTLRLRQSPECKPE
 IDKAVVVSPPSSLVKNWYNEVGKWLGGRIQPLAIDGGSKDEIDQKLEGFMNQRGARVSSPILIIISYETFRL
 HVGVLQKGSVGLVICDEGHRLKNSNQTYQALDSLNTSRRVLIISGTPIQNDLLEYFSLVHFVNSGILGTA
 HEFKKHFEPLILKGRDAAASEADRQLGEERLRELTISIVNRLIRRTSDILSKYLPVKIEQVVCRLTPLQ
 TELYKRFRLQAKPAEELLE GKMSVSSLSITSLKLCNHPALIYDKVEEEDGFVGDLDLFPFGYSSKAL
 EPQLSGKMLVLDYILAVTRSRSSDKVVLVSNTQTLDLFEKLCRARRYL YVRLDGTMSIKKRAKVVERFN
 SPSSPDFVFM LSSKAGGCGLN LIGANRLVMFDPDWN PANDEQAMARVWRDGGKTCYIYRLLSAGTIEEK
 IFQRQSHKKALSSCVDEEQDVERHFSLGELKELFILDEASLSDTHDRLHCRRCVNSRQIRPPP DGDSDCT
 SLAGWNHCTDKWGLRDEVLQAAWDAASTAITVFVHQRSHEEQRGLR

TRTRPLE - GFP Tag - V

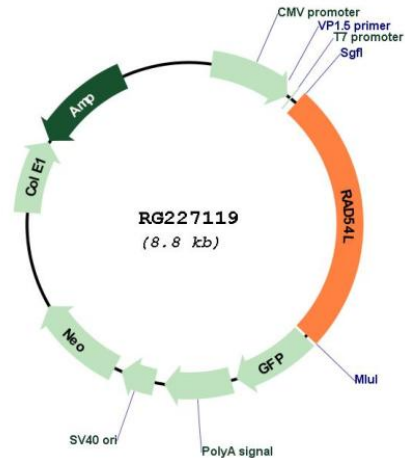
Restriction Sites: SgfI-MluI

Cloning Scheme:

Cloning sites used for ORF Shutting:



Plasmid Map:



ACCN: NM_001142548

ORF Size: 2241 bp

OTI Disclaimer: The molecular sequence of this clone aligns with the gene accession number as a point of reference only. However, individual transcript sequences of the same gene can differ through naturally occurring variations (e.g. polymorphisms), each with its own valid existence. This clone is substantially in agreement with the reference, but a complete review of all prevailing variants is recommended prior to use. [More info](#)

OTI Annotation: This clone was engineered to express the complete ORF with an expression tag. Expression varies depending on the nature of the gene.

Components: The ORF clone is ion-exchange column purified and shipped in a 2D barcoded Matrix tube containing 10ug of transfection-ready, dried plasmid DNA (reconstitute with 100 ul of water).

Reconstitution Method:

1. Centrifuge at 5,000xg for 5min.
2. Carefully open the tube and add 100ul of sterile water to dissolve the DNA.
3. Close the tube and incubate for 10 minutes at room temperature.
4. Briefly vortex the tube and then do a quick spin (less than 5000xg) to concentrate the liquid at the bottom.
5. Store the suspended plasmid at -20°C. The DNA is stable for at least one year from date of shipping when stored at -20°C.

RefSeq: [NM_001142548.1](#), [NP_001136020.1](#)

RefSeq Size: 2567 bp

RefSeq ORF: 2244 bp

Locus ID: 8438

UniProt ID: [Q92698](#)

Cytogenetics: 1p34.1

Protein Families: Druggable Genome, Stem cell - Pluripotency

Protein Pathways: Homologous recombination

Gene Summary: The protein encoded by this gene belongs to the DEAD-like helicase superfamily, and shares similarity with *Saccharomyces cerevisiae* Rad54, a protein known to be involved in the homologous recombination and repair of DNA. This protein has been shown to play a role in homologous recombination related repair of DNA double-strand breaks. The binding of this protein to double-strand DNA induces a DNA topological change, which is thought to facilitate homologous DNA pairing, and stimulate DNA recombination. Alternative splicing results in multiple transcript variants encoding the same protein.[provided by RefSeq, Dec 2008]