

Product datasheet for **RG227096**

PCDH15 (NM_001142771) Human Tagged ORF Clone

Product data:

Product Type:	Expression Plasmids
Product Name:	PCDH15 (NM_001142771) Human Tagged ORF Clone
Tag:	TurboGFP
Symbol:	PCDH15
Synonyms:	CDHR15; DFNB23; USH1F
Mammalian Cell Selection:	Neomycin
Vector:	pCMV6-AC-GFP (PS100010)
E. coli Selection:	Ampicillin (100 ug/mL)
ORF Nucleotide Sequence:	>RG227096 representing NM_001142771 Red=Cloning site Blue=ORF Green=Tags(s)

TTTTGTAATACGACTCACTATAGGGCGGCCGGAATTCGTCGACTGGATCCGGTACCGAGGAGATCTGCC
GCC**CGATCGCC**

ATGTTTCGACAGTTTTATCTCTGGACATGTTTAGCTTCAGGGATCATCCTGGGCTCTCTTTGAAATCT
GCTTGGGCCAGTATGATGATGACTGGCAATATGAGGATTGCAAACAGCTAGGGGAGGACCACCAGCTAC
CATAGTTGCTATTGATGAAGAAAGTCGGAATGGTACAATTCTGGTGGACAACATGCTGATCAAAGGGACT
GCTGGAGGACCAGACCCACCATAGAATTTCTTTAAAGGATAATGTGGATTACTGGGTGTTGATGGATC
CTGTTAAGCAAATGCTTTTCTGAACAGCACCGGAAGAGTTCTGGATAGAGATCCACCGATGAACATACA
CTCCATTGTGGTGCAGGTCCAGTGCATCAACAAAAAGTGGGCACTATTATCTACCATGAAGTGCGAATA
GTGGTGAGAGACAGGAATGACAACCTACCCACTTTCAAGCATGAAAGCTACTATGCCACAGTGAATGAGC
TCACTCCAGTTGGTACCACAATATTCACAGGATTTTCAGGAGACAATGGAGCTACAGATATAGATGATGG
ACCAATGGACAGATAGAGTATGTTATTCAGTATAATCCAGATGATCCGACATCCAATGACACCTTTGAA
ATCCCAATGTTGACTGGAAATATAGTGTTAAGGAAGAGGCTCAACTATGAAGATAAGACTCGCTACT
TTGTCATAATCCAAGCTAATGACCGTGCCAAAATCTGAATGAGAGGCGAACCACCACCACCTCTCAC
AGTGGATGTTCTGGATGGAGATGACTTGGGTCCAATGTTTCTTCTTGTCTCTGTGCCAACACTCGT
GATTGCCGTCCACTCACTTATCAAGCTGCCATACCTGAGTTGAGAATCCGGAAGAAGTGAACCCCATTA
TTGTTACGCCACCAATCCAAGCCATTGATCAGGACCGGAATATCAACCGCCATCAGATAGGCCAGGAAT
CCTCTATTCCATCCTTGTGGGACTCCTGAGGATTACCCACGATTTTCCATATGCATCCTAGGACAGCA
GAACTTAGTCTCCTGGAGCCAGTAAACAGAGACTTTCACCAGAAATTTGATTTGGTTATTAAGGCTGAAC
AAGACAATGGTCATCCTCTTCTGCCTTTGCCGGTCTACACATTGAAATACTGGATGAAAACAATCAAAG
TCCATATTTTACAATGCCAGTTATCAAGGCTATATCCTGGAATCTGCCCACTGGGAGCAACCATTTCCG
GACAGTCTCAATTTGACTTCACCTTTAAGAATAGTAGCTCTGGACAAGGACATAGAAGATACAAAAGACC
CAGAGCTTCACTTTTCTGAATGACTACACCTCAGTCTTACCCTCACACAGACTGGTATTACTCGCTA
CCTCACCTTACTCAACAGTGGACAGGAAGAAGACAGCAAACCTTACACCTTTTCGATAACAGCATTGAT



[View online >](#)

GGTGTAACAAGAAAGTGAGCCAGTCATCGTCAATATTCAAGTGATGGATGCAAATGATAACACGCCAACCT
 TCCCTGAAATATCCTATGATGTGTATGTTTATACAGACATGAGACCTGGGGACAGTGTACATACAGCTCAC
 TGCAGTCGACGCAGACGAAGGGTCAAAATGGGGAGATCACATATGAAATCCTTGTTGGGGCTCAGGGAGAC
 TTCATCATCAATAAAACAACAGGGCTTATCACCATCGTCCAGGGGTGAAATGATAGTCGGGGCGGACTT
 ACGCACTACGGTCCAAGCAGCGGATAATGCTCCTCCTGCAGAGCGAAGGAACTCCATCTGCACTGTGTA
 TATTGAAGTGCTCCACCAATAATCAAAGCCCTCCTCGCTTCCCACAGCTGATGATAGCCTTGAATTA
 AGTGAAGCCATGAGGGTTGGTGTGTTTTATTAATCTACAGGCAACTGATCGAGAGGGAGACTCAATAA
 CATATGCCATTGAGAATGGAGATCCTCAGAGAGTTTTTAATCTTTCAGAAACCACGGGGATTCTAACCTT
 AGGGAAAGCACTGGACAGGGAAAGCACTGATCGTACATTCTGATCATCACAGCTTCAGATGGCAGGCCA
 GATGGGACCTCAACTGCCACAGTAAACATAGTGGTGACAGATGTCAATGACAATGCTCCAGTGTTTGATC
 CTTATCTGCCAAGAAATTTATCTGTGGTGAAGAAGAAGCCAATGCCTTTGTGGGTCAAGTAAAAGCAAC
 AGACCCTGATGCTGGAATAAATGGTCAAGTGCCTACAGTTTGGGTAACTTAATAATCTTTTTCGTATC
 ACATCCAATGGGAGCATTACACAGCAGTGAAGCTTAAACAGAGAAGTCAGGGACTACTATGAACTGTTG
 TTGTGGCAACAGATGGAGCAGTACACCCTCGTCATTCAACTCTAACCTTGGCCATCAAGTTTTGGACAT
 TGATGATAACAGTCTGTGTTCCCAATCAACATACACTGTCTTGTGAAGAGAAATTTGCCAGCTGGG
 ACTACCATCCTTCAAATAGAGGGCAAAGATGTCGACCTTGGAGCAAATGTGTCTTACCGGATAAGAAGCC
 CAGAAGTGAAGCACTTTTTTGCCTACATCCATTTACAGGAGAATATCGCTTTAAGGAGTTTAGATTA
 TGAGGCATTTCCAGACCAAGAAGCAAGTATCACTTTTCTGGTAGAGGCCCTTGTATTTATGGAACAATG
 CCACCTGGTATTGCTACTGTACAGTGATTGTAAGGATATGAATGATTATCCTCCTGTCTTTAGTAAAC
 GAATATACAAAGGGATGGTGGCTCCGGATGCAGTCAAGGGTACACCTATCACAACAGTTTATGCTGAAGA
 TGCAGACCCTCCTGGATTACCTGCAAGTCGTGTGAGGTATAGAGTAGATGTACAGTTTCTTACCCT
 GCCAGTATTTTTGAAGTGAAGAAGATTCTGGAAGAGTAATAACACGAGTCAATCTAATGAAGAACCTA
 CAACAATTTTTAAGTTGGTGGTGGTGGTGGTGGTGGTGGTGGTGGTGGTGGTGGTGGTGGTGGTGGT
 GAAGATTCTGTCTTACATCCTGGTGGATCCACGCTTACACAGGAGGAATATAGACCTCCTCCAGTA
 AGTGAAGTGGCCACAAAGGGACCATGGTGGTGAATTTCTGCTGCTGCCATTAAATCAAAGTATTGTGT
 ACTCCATTGTTTCAGGAAATGAAGAAGATACATTTGGAATTAATAACATCACAGGTGTTATCTATGTGAA
 TGGACCTCTGGATTATGAGACCAGGACAAGCTATGTACTCGAGTCCAAGCTGATTCCTGGAAAGTGGTC
 CTTGCCAATCTCCGAGTTCCTTCAAAAAGCAATACAGCTAAAGTATACATTGAGATTGAGGATGAAAATA
 ATCATCCCCAGTGTTCAGAAAAAATTTACATCGGAGGTGATCTGAAGATGCAAGAATGTTTACTTC
 TGTACTCAGAGTGAAGGCTACTGATAAAGATACTGGCAATATAGTGTGTCATGGCCTACAGACTCATAATA
 CCACCAATTAAGAGGGAAAAGAAGGATTTGTAGTGGAAACATATACAGGGCTTATCAAACCTGCTATGC
 TCTTCCATAATATGAGGAGATCCTACTTCAAGTTTCAAGTATTGCAACTGACGACTATGGGAAGGGACT
 GAGCGGCAAAGCCGATGTACTCGTCTCCGTGGTCAATCAGCTGGATATGCAAGTCATTGTTTCCAATGTG
 CCTCCTACTCTAGTGGAAAAAAGATAGAAGATCTTACAGAGATCTTGGATCGCTATGTTTCAGGAACAAA
 TTCTGGTGGCAAGGTCGTAGTGGAGTCCATTGGAGCTCGCCGGCATGGAGATGCCTTTTCCCTAGAAGA
 TTACACCAAAATGTGACTGTACTGTCTATGCAATTGACCCCAAACCAACAGGCCATCGATAGAAATGAG
 CTTTTTAAATTTTTGGATGGCAAACACTTGTATCAATAAAGACTTTTCCAGCCGATTATGGGGAAGGAG
 GACGCATTTCTGGAGATCCGGACTCCAGAGGCAGTGACCAGCATTAAAAAGAGAGGAGAAAGTCTAGGATA
 CACAGAAGGGCCCTTGTGGCTCTGGCCTTCATCATCCTCTGCTGCATTCTGCCATCTTGGTGGTT
 TTGGTCAGCTACAGACAGTTTTAAAGTACGTCAAGCTGAGTGTACAAAGACTGCACGAATTCAGCCGCAT
 TACCCGCGGCTAAACCAGCAGTCCGGCTCCTGCACCAGTGGCAGCGCCCCGCCCGCCGCGCCTCC
 GCCAGGTGCGCATCTCTATGAAGAACTTGAGACAGCTCAATGCATAAGTATGAAATGCCTCAATATGGG
 AGTCGCGCTCGATTGTTACCACCAGCTGGACAGGAGGAATATGGTGAAGTGGTGGTGAAGCTGAGGAAG
 AATATGAGGAGGAAGAGTGGCAAGAAAAAGAATGATCAAGTTAGTTGTTGATCGAGAGTATGAAACCG
 CTCAACTGGAGAAGACAGTGTCTCTGAATGTGAGAGAAACCGTCTTACCATCCTAGTATCCACAGTAAT
 ATCAACGGCAATATATATTGCACAGAATGGTCTGTGGTGAGAACCCGCGTGCCTGCCTCACGGACA
 ACTTAAAAGTTGCTTCCCCTGTTGACTGGGAGGGCCCTTAAAGAACTAGACAAGTTGGCAGTGACACA
 TGAGGAGAATGTACCTCTGAACACATTATCAAAGGGGCCATTTTCTACTGAAAAAATGAATGCAAGACCA
 ACTCTGTTACATTTGCCCTTGCCTGTGGGGACTGACAATACAGCGGTGAAGCCACTAAGGAACAGGC
 TGAAAAGCACAGTTGAACAGGAGTCCATGATTGACAGTAAAGAATCAAGGAGGCTTTGGAATTTCATAG
 TGACCACACAGTCTGATGATGAAGAGCTTTGGATGGGCCCCTGGAACAACCTCCATATACCAATGACA
 AAAC TG

ACGCGTACGCGGCCGCTCGAG - GFP Tag - GTTTAA

Protein Sequence:

>RG227096 representing NM_001142771
 Red=Cloning site Green=Tags(s)

MFRQFYLWTLASGIILGSLFEICLGQYDDDWQYEDCKLARGGPPATIVAIDEESRNGTILVDNMLIKGT
 AGGPDPTIELSLKDNVDYWLMDPVKQMLFLNSTGRVLDPRPPMNIHSIVVQVQCINKKVGTTIYHEVRI
 VVRDRNDNSPTFKHESYATVNELTPVGTTFITGFSGDNGATDIDDGPNQIEYVIQYNPDPTSNDTFE
 IPLMLTGNIVLRKRLNYEDKTRYFVVIQANDRAQNLNERRTTTTLTVDVLGDGDLGPMFLPCVLPNTR
 DCRPLTYQAAIPELRTPEELNPIIVTPIQAIQDRNIQPPSDRPGILYSILVGTPEYPRFFHMHPRTA
 ELSLLEPVNRDFHQKFDLVIAEQDNGHPLPAFAGLHIEILDENNQSPYFTMPSYQGYILESAPVGATIS
 DSLNLTSPLRIVALDKDIEDTKDPELHLFLNDYTSVFTVTQTGITRYLTLQPVDREEQQTYTFSITAFD
 GVQSEPVIVNIQVMDANDNTPTFPEISYDVVYVYTDMPRGDSVIQLTAVDADEGSNGEITYEILVGAQGD
 FIINKTTGLITIAPGVEMIVGRYALTVAADNAPPAERRNSICTVYIEVLPPNNQSPFRPQLMYSLEI
 SEAMRVGAVLLNLQATDREGDSITYAIENGDPQRVFNLSETTGILTLGKALDRESTDRYILIIITASDGRP
 DGTSTATVNIIVTVDVNDAPVFDPYLPRNLSVVEEENAFVGVQKATDPDAGINGQVHYSLGNFNLFRI
 TSNNGSIYAVKLNREVRDYYELVVVATDGAVHPRHSTLTLAIKVLIDDNSPVFTNSTYTVLVEENLPAG
 TTILQIEAKDVLGANVSYRIRSPVKKHFFALHPFTGELSLRSLDYEAFPDQEASITFLVEAFDIYGTM
 PPGIATVTVIVKDMNDYPPVFSKRIYKGMVAPDAVKGTPITTVYAEDADPPGLPASRVRYRVDVQFPYP
 ASIFEVEEDSGRVITRVNLNEEPTTIFKLVVAFDDGEPVMSSSATVKILVLPGEIPRFTQEEYRPPPV
 SELATKGTVMGVISAAAINQSIYVSIYSGNEEDTFGINNITGVIYVNGPLDYETRTSYVLRVQADSLEVV
 LANLRVPSKSNKAVYIEIQDENNHPPVQKQFYIGGVSEDAFMFTSVLRVKATDKDTGNYVMAYRLII
 PPIKEGKEGFVVETYTGLIKTAMLFHNMRRSYFKFQVIATDDYKGLSGKADVLVSVVNQLDMQVIVSNV
 PPTLVEKKIEDLTEILDYVQEIPGAKVVVESIGARRHGDAFSLDYTKCDLTVYAIDPQTNRAIDRNE
 LFKFLDGKLLDINKDFQPYGEGGRILEIRTPEAVTSIKKRGESLGYTEGALLALAFIIILCCIPAILVV
 LVSYRQKFKVQAECTKTARIQAALPAKPAVPAPAPVAAPPPPPPPGPAHLYEELGDSSMHKYEYMPQYG
 SRRRLPPAGQEEYGEVVGEEAEYEEYEWARKRMIKLVVDREYETSSTGEDSAPECQRNRLHHSIHSN
 INGNIIYAQNGSVVRTRRACLTDNLKVASPVRLGGPFKLDKLAVTHEENVPLNTLSKGGPFSTEKMNARP
 TLVTFAPCPVGTDNTAVKPLRNRLKSTVEQESMIDSKNIKEALEFHSHTQSDDEELWMPGNLHHPMT
 KL

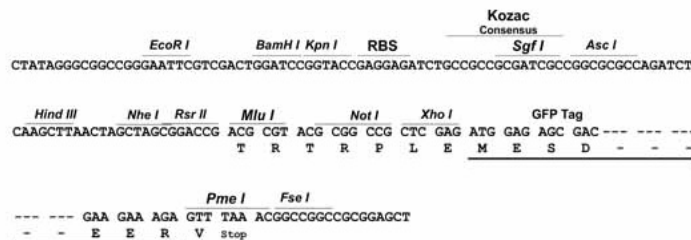
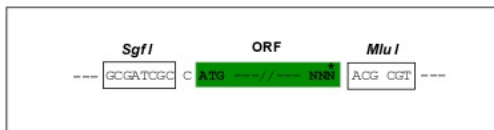
TRTRPLE - GFP Tag - V

Restriction Sites:

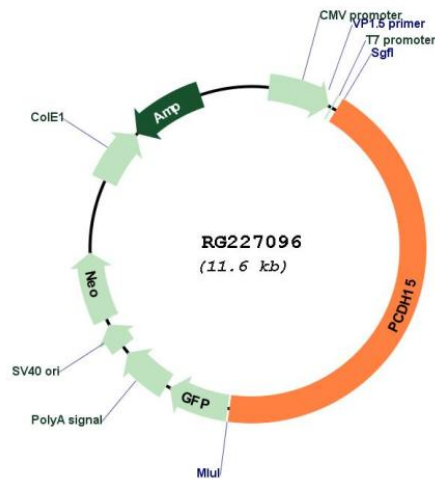
SgfI-MluI

Cloning Scheme:

Cloning sites used for ORF Shuttling:



Plasmid Map:



ACCN: NM_001142771

ORF Size: 5046 bp

OTI Disclaimer: The molecular sequence of this clone aligns with the gene accession number as a point of reference only. However, individual transcript sequences of the same gene can differ through naturally occurring variations (e.g. polymorphisms), each with its own valid existence. This clone is substantially in agreement with the reference, but a complete review of all prevailing variants is recommended prior to use. [More info](#)

OTI Annotation: This clone was engineered to express the complete ORF with an expression tag. Expression varies depending on the nature of the gene.

Components:	The ORF clone is ion-exchange column purified and shipped in a 2D barcoded Matrix tube containing 10ug of transfection-ready, dried plasmid DNA (reconstitute with 100 ul of water).
Reconstitution Method:	<ol style="list-style-type: none">1. Centrifuge at 5,000xg for 5min.2. Carefully open the tube and add 100ul of sterile water to dissolve the DNA.3. Close the tube and incubate for 10 minutes at room temperature.4. Briefly vortex the tube and then do a quick spin (less than 5000xg) to concentrate the liquid at the bottom.5. Store the suspended plasmid at -20°C. The DNA is stable for at least one year from date of shipping when stored at -20°C.
RefSeq:	<u>NM_001142771.2</u>
RefSeq Size:	9252 bp
RefSeq ORF:	5049 bp
Locus ID:	65217
Cytogenetics:	10q21.1
Protein Families:	Druggable Genome, Transmembrane
Gene Summary:	<p>This gene is a member of the cadherin superfamily. Family members encode integral membrane proteins that mediate calcium-dependent cell-cell adhesion. It plays an essential role in maintenance of normal retinal and cochlear function. Mutations in this gene result in hearing loss and Usher Syndrome Type IF (USH1F). Extensive alternative splicing resulting in multiple isoforms has been observed in the mouse ortholog. Similar alternatively spliced transcripts are inferred to occur in human, and additional variants are likely to occur. [provided by RefSeq, Dec 2008]</p>