

Product datasheet for **RG227067**

BHLHB9 (NM_001142530) Human Tagged ORF Clone

Product data:

Product Type:	Expression Plasmids
Product Name:	BHLHB9 (NM_001142530) Human Tagged ORF Clone
Tag:	TurboGFP
Symbol:	BHLHB9
Synonyms:	GASP3; p60TRP
Mammalian Cell Selection:	Neomycin
Vector:	pCMV6-AC-GFP (PS100010)
E. coli Selection:	Ampicillin (100 ug/mL)



[View online »](#)

ORF Nucleotide Sequence:

>RG227067 representing NM_001142530
 Red=Cloning site Blue=ORF Green=Tags(s)

TTTTGTAATACGACTCACTATAGGGCGGCCGGAATTCGTCGACTGGATCCGGTACCGAGGAGATCTGCC
 GCC**CGGATCGCC**

ATGGCTGGGACTAAGAATAAGACAAGAGCCAGGCCAAAAGCTGAAAAAAGGCTGCTATACAAGCTAAAG
 CTGGAGCAGAGAGGGAGGCTACTGGTGTGTTAGGCCTGTAGCCAAGACCAGGGCCAAAGCAAAGCCAA
 GACAGGGTCTAAGACAGATGCAGTAGCAGAGATGAAGGCAGTGTCTAAGAACAAGGTTGTTGCTGAGACG
 AAGGAAGGAGCTCTGTCAGAGCCTAAGACTCTGGGCAAAGCCATGGGAGATTTCACTCCCAAGGCTGGGA
 ATGAGTCCACCAGCTCCACATGTAAAAATGAGGCTGGTACTGATGCCTGGTTCTGGGCTGGGGAAGAGGC
 CACTATCAATTCCTGGTCTGGAATGGAGAAGAGGCTGGTAATAGTTTCAGCACTAAGAATGATAAACCT
 GAAATTTGGTGGCCAGGCTGTGCTGAGGAGTTGGAACCTGCGGCTGGGGCCGATTGCAAACCTAGGTCAG
 GGGCTGAGGAGGAGGAGGAAGAGAATGTTATTGGGAAGTGGTTTTGGGAAGGAGATGATACTAGTTTTGA
 CCCTAATCCTAAACCTGTGAGCAGGATAGTTAAGCCTCAGCCTGTGTATGAAATTAATGAAAAAATAGG
 CCCAAGGACTGGTCTGAGGTAATCTGGCCCAATGCCCTGCTGTAACCTCAGCTGTGTTAGGATTTA
 GATCACAGGCACCATCTGAGGCAAGCCCTCCTTCATATATTGTTCTGGCCTCCGCTGAAGAAAATGCCTG
 TTCTTTGCCTGTGGCAACAGCTTGCCGCCCTTCTAGGAACACTCGCTCATGCTCACAGCCTATCCCTGAG
 TGTCTGTTTTGATTCTGACCCCTGCATCCAGACCATAGATGAGATTAGACGTCAAATCAGGATCAGGGAGG
 TAAATGGGATTAAGCCATTTGCTTGTCTTGCAAAATGGAATGCTATATGGATTCTGAGGAATTTGAAAA
 ACTTGTAGCTTACTTAAGTCAACTACTGATCCTCTTATTCATAAAAATAGCACGGATTGCAATGGGTGTC
 CATAATGTTCACCCATTTGCCCAAGAGTTTATTAACGAAGTAGGTGTAGTACACTTATTGAAAGCTTGC
 TCAGTTTTCTTCCCCTGAAATGAGAAAAAGACTGTAATTAAGTCTGAAATCCTCCTTCTGGGGATGAAAG
 ACAACGCAAAAATGAATTAACATGTTAAGCATATGTGTAAGAAACCATGTCATTTCTTTGAACTACCG
 GGACAGCAATCTGGATTAAGATACTAGGACAAGTACTGACTACTGATTTTGTCCATCACTACATTGTTGCCA
 ATTAAGTTTTCAGAGCTTTTCCATTTGCTGTCTCAGGAAATGCAAAAACAGAAATCTTGTTTTGAAGT
 ACTTTTAAATATGCTGAAAATCCAAGTGCAGCCAGAGACATGATCAATATGAAGGCATTGGCAGCATTAA
 AAAGTCACTTTAACCAGAAAGAGGCAAAAGCCAACTTGTAGTGGTGTGGCCATTTTATTAACATAA
 AGGAGCATATCAGAAAAGGCTCAATTGTAGTTGTTGATCACTTGAGTTATAATACACTCATGGCCATTTT
 CAGGGAAGTTAAGAGATTATTGAAACAATG

ACGCGTACGCGGCCGCTCGAG - GFP Tag - GTTTAA

Protein Sequence:

>RG227067 representing NM_001142530
 Red=Cloning site Green=Tags(s)

MAGTKNKTRAQAKTEKKAIIQAKAGAEREATGVVVRPAKTRAKAKAKTGSKTDVAEMKAVSKNKVVAET
 KEGALSEPRTLKAMGDFTPKAGNESTSSCKNEAGTDAFWWAGEEATINSWFWNGEEAGNSFSTKNDKP
 EIGAQVCAEELEPAAGADCKPRSGAEENVIWNWFWEGDDTSFDPNPKPVSRIKVPQPVYIEINEKNR
 PKDWSEVTIWPNAVTPAVLGFERSQAPSEASPPSYIVLASAEENACSLPVATACRPSRNRSCSQPIPE
 CRFDSQPCIQTIDEIRRQIRIREVNGIKPFACPKMECYMDEEFKLVSLKSTTDPLIHKIARIAMGV
 HNVHPFAQEFINEVGVVTLIESLLSFPSPMRKKTIVITLNPPSGDERQRKIELHVHKMCKETMSFPLNSP
 GQQSGLKILGQLTTDFVHHYIVANYFSELFHLLSSGNCKTRNLVLKLLNMSNPNTAARDMINMKALAAAL
 KLIFNQKEAKANLVSGVAIFINIKHIRKGSIVVDHLSYNTLMAIFREVKEIIEIM

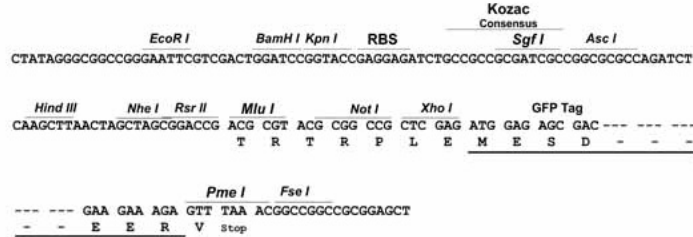
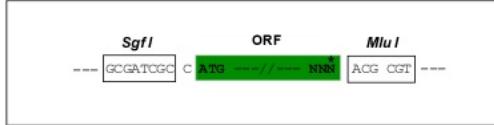
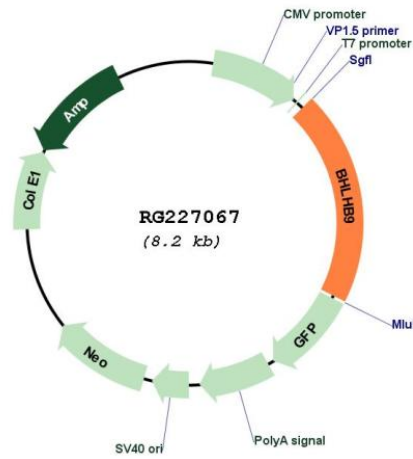
TRTRPLE - GFP Tag - V

Restriction Sites:

Sgfl-MluI

Cloning Scheme:

Cloning sites used for ORF Shutting:


Plasmid Map:


ACCN:	NM_001142530
ORF Size:	1641 bp
OTI Disclaimer:	The molecular sequence of this clone aligns with the gene accession number as a point of reference only. However, individual transcript sequences of the same gene can differ through naturally occurring variations (e.g. polymorphisms), each with its own valid existence. This clone is substantially in agreement with the reference, but a complete review of all prevailing variants is recommended prior to use. More info
OTI Annotation:	This clone was engineered to express the complete ORF with an expression tag. Expression varies depending on the nature of the gene.
Components:	The ORF clone is ion-exchange column purified and shipped in a 2D barcoded Matrix tube containing 10ug of transfection-ready, dried plasmid DNA (reconstitute with 100 ul of water).
Reconstitution Method:	<ol style="list-style-type: none">1. Centrifuge at 5,000xg for 5min.2. Carefully open the tube and add 100ul of sterile water to dissolve the DNA.3. Close the tube and incubate for 10 minutes at room temperature.4. Briefly vortex the tube and then do a quick spin (less than 5000xg) to concentrate the liquid at the bottom.5. Store the suspended plasmid at -20°C. The DNA is stable for at least one year from date of shipping when stored at -20°C.
RefSeq:	NM_001142530.1 , NP_001136002.1
RefSeq Size:	3953 bp
RefSeq ORF:	1644 bp
Locus ID:	80823
UniProt ID:	Q6PI77
Cytogenetics:	Xq22.1
Gene Summary:	This gene is a member of a gene family which encodes proteins with a basic helix-loop-helix domain. Other members of this gene family encode proteins which function as transcription factors, either enhancing or inhibiting transcription depending on the activity of other DNA binding proteins. The coding region of this gene is located entirely within the terminal exon. The encoded protein may be involved in the survival of neurons (PMID: 15034937). Multiple alternatively spliced variants, encoding the same protein, have been identified. [provided by RefSeq, Sep 2011]