

Product datasheet for **RG227037**

POTEC (NM_001137671) Human Tagged ORF Clone

Product data:

| | |
|---------------------------|---|
| Product Type: | Expression Plasmids |
| Product Name: | POTEC (NM_001137671) Human Tagged ORF Clone |
| Tag: | TurboGFP |
| Symbol: | POTEC |
| Synonyms: | A26B2; CT104.6; POTE-18; POTE18 |
| Mammalian Cell Selection: | Neomycin |
| Vector: | pCMV6-AC-GFP (PS100010) |
| E. coli Selection: | Ampicillin (100 ug/mL) |



[View online »](#)

ORF Nucleotide Sequence:

>RG227037 representing NM_001137671
 Red=Cloning site Blue=ORF Green=Tags(s)

TTTTGTAATACGACTCACTATAGGGCGGCCGGAATTCGTCGACTGGATCCGGTACCGAGGAGATCTGCC
 GCC**GCGATCGCC**

ATGGTGACTGAGTTTGTCAATGCCCGCTGCCTCTGCTGTGAAGAAGCCATTTCATCTCAGGAGCAAGA
 TGGCAAGTGGTTTACCACCGCTTCCCCTGCTGCAAGGGGAGCGCAAGAGCAACATGGCACTTCTGG
 AGACCACGACGACTCCTTTATGAAGATGCTCAGGAGCAAGATGGCAAGTGTGCCACCACTGCTTCCCC
 TGCTGCAGGGGAGCGGCACGAGCAACGTGGGCACTTCTGGAGACCATGACAACCTTTTATGAAGACGC
 TCAGGAGCAAGATGGCAAGTGGTGTCTGCTGCTTCCCCTGCTGCAGGGGAGCGCAAGAGCAACGT
 GGGCGCTTGGGGAGACTACGACGACAGCGCCTTCATGGAGCCGAGGTACCACGTCCGTCGAGAAGATCTG
 GACAAGCTCCACAGAGCTGCCTGGTGGGTAAAGTCCCCAGAAAGGATCTCATCGTCATGCTCAGGGACA
 CGGACATGAACAAGAGGGACAAGCAAAAAGAGGACTGCTCTACATTTGGCCTCTGCCAATGAAAATTCAGA
 AGTAGTACAACCTCTGCTGGACAGACGATGCACTTAATGTCTTGACAACAAAAAAGGACAGCTCTG
 ATAAAGGCCGTACAATGCCAGGAAGATGAATGTGTGTTAATGTTGCTGGAACATGGCGCTGATCAAATA
 TTCCAGATGAGTATGAAATACCACTCTACACTATGCTGTCCACAATGAAGATAAATTAATGGCCAAAGC
 ACTGCTCTTATATGGTGTGATATTGAATCAAAAAACAAGTGTGGCCTCACACCACTTTTCTTGGCGTA
 CATGAACAAAAACAGCAAGTGGTGAATTTTTAATCAAGAAAAAGCTAATTTAATGCACCTTGATAGAT
 ATGGAAGAAGTCCCTCATACTTGTGTATGTTGTGGATCAGCAAGTATAGTCAATCTTCTCCTTGAGCA
 AAATGTTGATGTATCTTCAAGATCTATCTGGACAGACGGCCAGAGAGTATGCTGTTTCTAGTCATCAT
 CATGTAATTTGTGAATTACTTTCTGACTATAAAGAAAAACAGATGCTAAAAATCTCTTCTGAAAAACGCA
 ATCCAGAACAAAGACTTAAAGCTAACATCAGAGGAAGAGTACAAAGGCTTAAAGTCAGTAAAAATAGCCA
 GCCAGAGAAAATGTCTCAAGAACCAGAAAATAAATAGGACTGTGATAGAGAGGTTGAAGAAGAAAATAAAG
 AAGCATGGAAGTAACTCTGTGGATTACCAAAAACTGACTAATGGTGCCAGTGTGGCAATGGTGTGATG
 ATGGATTAATCCACAAAGGAGGAGCAGAAAACTGAAAAACAGCAATTTCTGACACTGAGAATGAAGA
 GTATCACAGTGACGAACAAAATGATACCCGAAACAACCTTCTGAAGAACAGAACTGGAATATCACAA
 GATGAGATTCTGACTAATAAACAAAAGCAGATAGAAGTGGCTGAAAAGAAAATGAATTCTGAGCTTTCTC
 TTAGTCATAAGAAAGAAGAAGATCTCTTGGCTGAAAACAGCATGTTGCAGGAAGAATGGCCATGCTAAT
 TTCTGGAGACTGGAAC

ACGCGTACGCGGCCGCTCGAG - GFP Tag - GTTTAA

Protein Sequence:

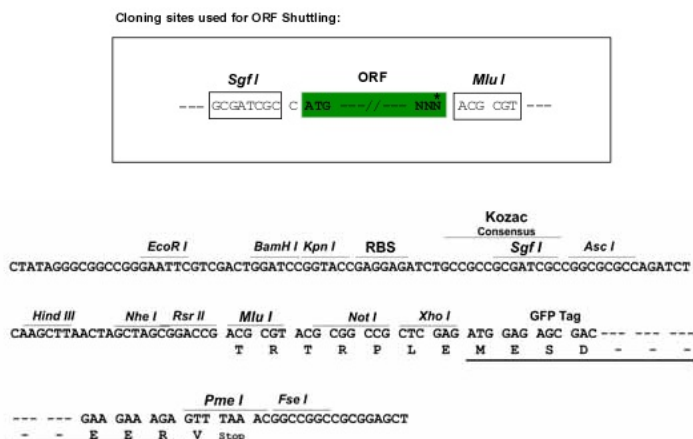
>RG227037 representing NM_001137671
 Red=Cloning site Green=Tags(s)

MVTEVCSMPAASAVKKPFDLRSMGKWFHHRFPCKGSGKSNMGTSGDHDDSFMKMLRSMGKCCCHCFP
 CCRGSGTSNVGTSGDHNSFMKTLRSMGKWCCHCFPCCRGSGKSNVGAWGDYDDSAFMEPRYHVRREDL
 DKLHRAAWGKVPKDLIVMLRDTDMNKRDKQKRTALHLASANGNSEVVQLLLDRRCQLNVLDNKKRTAL
 IKAVQCQEDECVLMLLEHGADQNIPDEYNTTLHYAVHNEDKLMAKALLLYGADIESKNKCGLTPLLLGV
 HEKQKQVVKFLIKKKANLNALDRYGRALILAVCCGSASIVNLLLEQNVDVSSQDLSGQTAREYAVSSH
 HVICELLSDYKEKQMLKISSSENSPEQDLKLTSEESQRLKVSSENSQPEKMSQPEINKDCDREVEEIK
 KHGSNPVGLPENLTNGASAGNGDDGLIPQRRSRKPENQQFPDTENEEYHSDEQNDTRKQLSEEQNTGISQ
 DEILTNKQKQIEVAEKKMNSLSLHKKEEDLLRENSMLQEEIAMLISGDWN

TRTRPLE - GFP Tag - V

Restriction Sites:

Sgfl-MluI

Cloning Scheme:


ACCN: NM_001137671

ORF Size: 1626 bp

OTI Disclaimer: The molecular sequence of this clone aligns with the gene accession number as a point of reference only. However, individual transcript sequences of the same gene can differ through naturally occurring variations (e.g. polymorphisms), each with its own valid existence. This clone is substantially in agreement with the reference, but a complete review of all prevailing variants is recommended prior to use. [More info](#)

OTI Annotation: This clone was engineered to express the complete ORF with an expression tag. Expression varies depending on the nature of the gene.

Components: The ORF clone is ion-exchange column purified and shipped in a 2D barcoded Matrix tube containing 10ug of transfection-ready, dried plasmid DNA (reconstitute with 100 ul of water).

Reconstitution Method:

1. Centrifuge at 5,000xg for 5min.
2. Carefully open the tube and add 100ul of sterile water to dissolve the DNA.
3. Close the tube and incubate for 10 minutes at room temperature.
4. Briefly vortex the tube and then do a quick spin (less than 5000xg) to concentrate the liquid at the bottom.
5. Store the suspended plasmid at -20°C. The DNA is stable for at least one year from date of shipping when stored at -20°C.

RefSeq: [NM_001137671.1](#), [NP_001131143.1](#)

RefSeq Size: 2243 bp

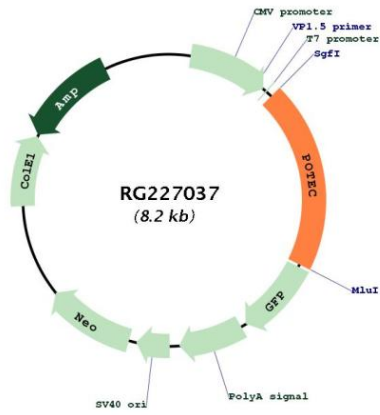
RefSeq ORF: 1629 bp

Locus ID: 388468

UniProt ID: [B2RU33](#)

Cytogenetics: 18p11.21

Product images:



Circular map for RG227037