

Product datasheet for **RG227026**

ALDH16A1 (NM_001145396) Human Tagged ORF Clone

Product data:

Product Type:	Expression Plasmids
Product Name:	ALDH16A1 (NM_001145396) Human Tagged ORF Clone
Tag:	TurboGFP
Symbol:	ALDH16A1
Mammalian Cell Selection:	Neomycin
Vector:	pCMV6-AC-GFP (PS100010)
E. coli Selection:	Ampicillin (100 ug/mL)



[View online »](#)

**ORF Nucleotide
Sequence:**

>RG227026 representing NM_001145396
 Red=Cloning site Blue=ORF Green=Tags(s)

TTTTGTAATACGACTCACTATAGGGCGGCCGGGAATTCGTCGACTGGATCCGGTACCGAGGAGATCTGCC
 GCC**CGGATCGCC**

ATGGCTGCGACGCGTGCAGGGCCCCGCGCCCGAGATCTTCACCTCGCTGGAGTACGGACCGGTGCCGG
 AGAGCCACGCATGCGCACTGGCCTGGCTGGACACCCAGGACCGGTGCTTGGGCCACTATGTGAATGGGAA
 GTGGTTAAAGCCTGAACACAGAAATTCAGTGCCTTGCCAGGATCCCATCACAGGAGAGAAGTTGGCCAGT
 TGCTGACAGGCACAGGCCGAGGATGTGGCTGCAGCCGTGGAGGCAGCCAGGATGGCATTAAAGGGCTGGA
 GTGCGCACCCCGCGTGTCCGGGCCAGCACCTGACCAGGCTGGCCGAGGTGATCCAGAAGCACCAGCG
 GCTGCTGTGGACCCTGGAATCCCTGGTACTGGCGGGCTGTTTCGAGAGGTTTCGAGACGGGGACGTCCAG
 CTGGCCCAGCAGTGTCCACTACCATGCAATCCAGGCATCCACCCAGGAGGAGGACTGGCAGGCTGGG
 AGCCCATGGGAGTAATTGGCCTCATCTGCCACCCACATTCCTCCTTCCTTGAGATGATGTGGAGGATTTG
 CCCTGCCCTGGCTGTGGGCTGCACCGTGGTGGCCCTCGTCCCCCGGCCCTCCCCGGCGCCCTCCTCCTG
 GCCCAGCTGGCGGGGAGCTGGGCCCTTCCCGGAATCCTGAATGTCTCAGTGGCCCTGCGTCCCTGG
 TGCCCATCCTGGCCTCCAGCCTGGAATCCGGAAGGTGGCCTTCTGCGGAGCCCCGGAGGGTGGCCTCAG
 GCTCCTCATCCAGGAGTCTGTGTGGATGAAGCCATGAGACGGCTGCAGGAGCGGATGGGGCGGCTTCGG
 AGTGGCCGAGGGCTGGATGGGGCCGTGGACATGGGGGCCCGGGGGCTGCCGCATGTGACCTGGTCCAGC
 GCTTTGTGCGTGAGGCCAGAGCCAGGGTGCACAGGTGTTCCAGGCTGGTGTGATGTGCCTTCGGAACGCC
 ATCTATCCCCAACCTTGGTCTCAACCTGCCCCAGCCTCCCATGTGCCAGGTGGAGGTGCCGTGG
 CCTGTGGTGTGGCCTCCCCCTCCGCACAGCCAAGGAGGCACTGTTGGTGGCAACGGGACGCCCGCG
 GGGCAGCGCCAGTGTGTGGAGCGAGAGGCTGGGGCAGCGCTGGAGCTGGGCTATGGGCTCCAGGTGGG
 CACTGTCTGGATCAACGCCACGGCCTCAGAGACCCTTCGGTGGCCACAGGCGGCTGCAAGGAGAGTGGG
 GTTTCCTGGCACGGGGGCCAGACGGGCTGTATGAGTATCTGCGGCCCTCAGGGACCCCTGCCCGGCTGT
 CCTGCCTCTCCAAGAACCTGAACTATGACACCTTTGGCCTCGCTGTTCCCTCAACCCTGCCGGCTGGGCC
 TGAAATAGGGCCAGCCAGCACCCCTATGGGCTTTCGTTGGGGGCCGTTTCAGGCTCCTGGGGCC
 CGAAGCTCCAGGCCATCCGGGATTCGTCTGGCAACCTCCATGGCTACGTGGCTGAGGGTGGAGCCAAGG
 ACATCCGAGGTGCTGTGGAGGCCGCTCACCAGGCTTTCCTGGCTGGGCGGGCCAGTCCCAGGAGCCCG
 GGCAGCCCTGCTGTGGCCCTGGCGCTGCACTGGAGCGCCGGAAGTCTACCCTGGCCTCGAGGCTGGAG
 AGGCAGGGAGCGGAGCTCAAGGCTGCGGAGGCGGAGGTGGAGCTGAGCGCAAGACGACTTCGGGCTGGG
 GGGCCCGGTGCAGGCCAAGGCCACACCCTGCAGGTAGCCGGGCTGAGAGGCCCTGTGCTGCGCCTGCG
 GGAGCCGCTGGGTGTGCTGGCTGTGGTGTGTCGGACGAGTGGCCCTGCTTGCCTTCGTGTCCCTGCTG
 GCTCCCGCCTGGCCTACGGCAACTGTGGTCAATGGTGGCCAGTGCAGCCTGTCTCTGCTGGCCCTGG
 AGGTCTGCCAGGACATGGCCACCGTGTCCAGCAGGCCCTGGCCAACGTGGTGGACAGGAGACCGGGACCA
 TCTGACCCGCTGCCTGGCCTTGCACCAAGACGTCCAGGCCATGTGGTATTTCCGATCAGCCAGGGTTCC
 CAGTTTGTGAGTGGCCTCGGCAGGAAACCTCAAACCGGTGTGGGCGAGCAGGGGCTGCCCGGGGCT
 GGGACAGGAGGCCAGGGGGCAGGCCAGAGCTGGGGCTGCGAGTGGCGCGACCAAGGCCCTGTGGCT
 GCCTATGGGGAC

AC**CGGCCCGC**TCGAG - GFP Tag - GTTTAA

Protein Sequence: >RG227026 representing NM_001145396
 Red=Cloning site Green=Tags(s)

```

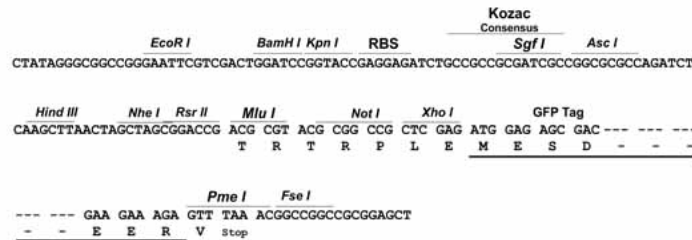
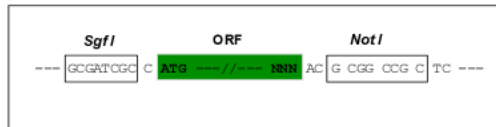
MAATRAGPRAREIFTSLEYGPVPESHACALAWLDTQDRCLGHVYNGKWLKPEHRNSVPCQDPITGENLAS
CLQAQAEDVAAAVEAARMAFKGWSAHPGVVRAQHLTRLAEVIQKHQRLLWTLESLVTGRAVREVRDGDVQ
LAQQLLHYHAIQASTQEEALAGWEPMGVIGLILPPTFSFLEMMWRICPALAVGCTVVALVPPASPAPLLL
AQLAGELGPFPGILNLVSGPASLVPILASQPGIRKVAFCGAPEGGLRLLIQESVWDEAMRRLQERMGRLR
SGRGLDGAVDMGARGAAACDLVQRFVREAQSQGAQVFQAGDVPSEPFYPPTLVSNLPPASPCAQVEVPW
PVVVASPFRTAKEALLVANGTPRGGASVWSERLGQALELGYGLQVGTVWINAHGLRDPVPTGGCKESG
CSWHGGPDGLYEYLRPSGTPARLSCLSKNLNYDTFGLAVPSTLPAGPEIGPSPAPPYGLFVGGRFQAPGA
RSSRPIRDSSGNLHGYYAEGGAKDIRGAVEAAHQAFPGWAGQSPGARAALLWALAAALERRKSTLASRLE
RQGAELKAAEALEVELSARRLRAWGARVQAQGHTLQVAGLRGPVLRRLREPLGVLAVVCPDEWPLLAFLVSL
APALAYGNTVVMVPSAACPLLALEVCQDMATVFPAGLANVVTGDRDHLTRCLALHQDVQAMWYFSAQGS
QFVEWASAGNLKPVWASRGCPRAWDQEAEGAGPELGLRVARTKALWLPMD
  
```

TRPLE - GFP Tag - V

Restriction Sites: SgfI-NotI

Cloning Scheme:

Cloning sites used for ORF Shutting:



ACCN: NM_001145396

ORF Size: 2253 bp

OTI Disclaimer: The molecular sequence of this clone aligns with the gene accession number as a point of reference only. However, individual transcript sequences of the same gene can differ through naturally occurring variations (e.g. polymorphisms), each with its own valid existence. This clone is substantially in agreement with the reference, but a complete review of all prevailing variants is recommended prior to use. [More info](#)

OTI Annotation: This clone was engineered to express the complete ORF with an expression tag. Expression varies depending on the nature of the gene.

Components: The ORF clone is ion-exchange column purified and shipped in a 2D barcoded Matrix tube containing 10ug of transfection-ready, dried plasmid DNA (reconstitute with 100 ul of water).

Reconstitution Method:

1. Centrifuge at 5,000xg for 5min.
2. Carefully open the tube and add 100ul of sterile water to dissolve the DNA.
3. Close the tube and incubate for 10 minutes at room temperature.
4. Briefly vortex the tube and then do a quick spin (less than 5000xg) to concentrate the liquid at the bottom.
5. Store the suspended plasmid at -20°C. The DNA is stable for at least one year from date of shipping when stored at -20°C.

RefSeq: [NM_001145396.2](#)

RefSeq Size: 2966 bp

RefSeq ORF: 2256 bp

Locus ID: 126133

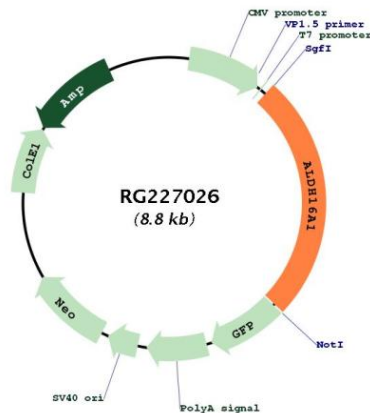
UniProt ID: [Q8IZ83](#)

Cytogenetics: 19q13.33

Protein Families: Druggable Genome

Gene Summary: This gene encodes a member of the aldehyde dehydrogenase superfamily. The family members act on aldehyde substrates and use nicotinamide adenine dinucleotide phosphate (NADP) as a cofactor. This gene is conserved in chimpanzee, dog, cow, mouse, rat, and zebrafish. The protein encoded by this gene interacts with maspardin, a protein that when truncated is responsible for Mast syndrome. Alternatively spliced transcript variants encoding different isoforms have been found for this gene. [provided by RefSeq, Apr 2010]

Product images:



Circular map for RG227026