

Product datasheet for **RG227014**

TMEM169 (NM_001142311) Human Tagged ORF Clone

Product data:

Product Type: Expression Plasmids
Product Name: TMEM169 (NM_001142311) Human Tagged ORF Clone
Tag: TurboGFP
Symbol: TMEM169
Mammalian Cell Selection: Neomycin
Vector: pCMV6-AC-GFP (PS100010)
E. coli Selection: Ampicillin (100 ug/mL)
ORF Nucleotide Sequence: >RG227014 representing NM_001142311
Red=Cloning site Blue=ORF Green=Tags(s)

TTTTGTAATACGACTCACTATAGGGCGGCCGGAATTCGTCGACTGGATCCGGTACCGAGGAGATCTGCC
GCC**CGATCGCC**

ATGGAAGAGCCAACAGCAGTAGAAGGCCAGGTCCAGCTTCCAAGCCCCACCAGGGCTCTCTCAGGAAGG
CTGTGGCTGTGCCCTGGCGCTGGATGGGAATCCACAATGGGGCACAGGAAAAAGAGGAAAGAGTC
ACGCCAGAATCCATCATCATCTACCGCTCAGACAATGAGAAAACAGATGAGGAGCCCGGAGAATCAGAA
GGTGGAGATCAGCCTAAAGAGGAGGAGGGAGATGATTTCTAGACTATCCTGTGGATGATGATATGTGGA
ACCTGCCTCTGGACAGCCGCTACGTCACCTTAACTGGGACCATCACACGAGGGAAGAAAAAGGGTCAGAT
GGTGGACATCCATGTACATTGACAGAGAAAGAGCTGCAGGAACCTGACCAAACCTAAAGAGTCATCAAGG
GAAACGACGCCTGAAGGAAGAATGGCCTGCCAGATGGGAGCTGACCGTGGGCCCCATGTGGTCCTCTGGA
CGTGATCTGCCTGCCTGTGGTTTTTCATCCTTTCTTTTGTGTCTTTTCTACTACGGCACTATCACCTG
GTACAACATCTTCTCGTGTATAATGAGGAAAGGACCTTCTGGCACAAGATCTCGTATTGCCCTTGCCTC
GTTCTCTTCTATCCAGTGCTCATCATGGCCATGGCTTCTCCCTCGGCCTCTACGCTGCTGTGGTCCAGC
TCTCGTGGTCTGGGAAGCATGGTGGCAAGCTGCCCGGACATGGAGAAAGGCTTCTGTGGCTGGCTCTG
CAGCAAGCTGGGCTGGAGGACTGTTCTCCCTACAGCATTGTGGAGTTGCTTGAATCCGACAATATCTCA
AGCACTCTCCAACAAGGACCCATCCAAGAAGTAGAAACCTCCACGGT

ACGCGTACGCGGCCGCTCGAG - GFP Tag - GTTTAA



[View online »](#)

Protein Sequence: >RG227014 representing NM_001142311
Red=Cloning site Green=Tags(s)

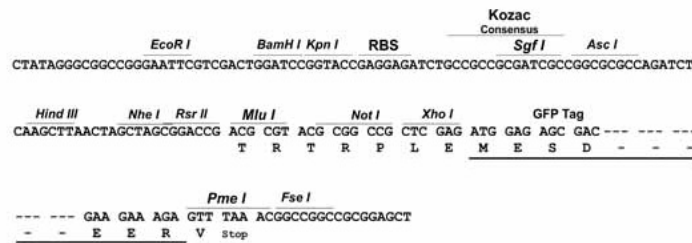
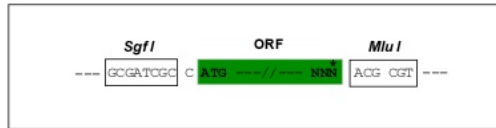
MEEPTAVEGQVQLPSPHQGLSRKAVAAALDGESTMGHRKKRKRKESRPESIIYRSDNEKTDEEPPGESE
GGDQPKKEEGDDFLDYPVDDDMWNLPLDSRYVTLTGTITRGKKKGQMVDIHVTLTEKELQELTKPKESSR
ETTPEGRMACQMGADRGPHVVLWTLICLPVVFILSFVVSFYYGTITWYNI FLVYNEERTFWHKISYCPCL
VLFYFVPLIMAMASSLGLYAAVVQLSWSWEAWWQAARDMEKGF CGWLCSKLGLED CSPYSIVELLESDNIS
STLSNKDPIQEVETSTV

TRTRPLE - GFP Tag - V

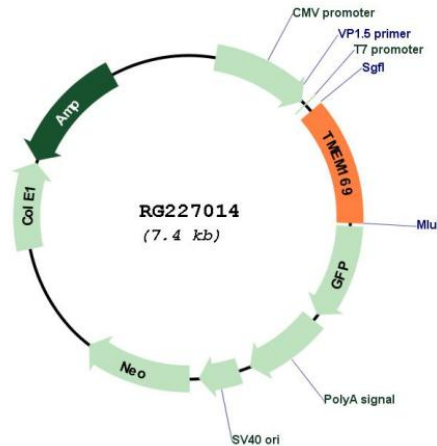
Restriction Sites: SgfI-MluI

Cloning Scheme:

Cloning sites used for ORF Shutting:



Plasmid Map:



ACCN: NM_001142311

ORF Size: 891 bp

OTI Disclaimer:	The molecular sequence of this clone aligns with the gene accession number as a point of reference only. However, individual transcript sequences of the same gene can differ through naturally occurring variations (e.g. polymorphisms), each with its own valid existence. This clone is substantially in agreement with the reference, but a complete review of all prevailing variants is recommended prior to use. More info
OTI Annotation:	This clone was engineered to express the complete ORF with an expression tag. Expression varies depending on the nature of the gene.
Components:	The ORF clone is ion-exchange column purified and shipped in a 2D barcoded Matrix tube containing 10ug of transfection-ready, dried plasmid DNA (reconstitute with 100 ul of water).
Reconstitution Method:	<ol style="list-style-type: none">1. Centrifuge at 5,000xg for 5min.2. Carefully open the tube and add 100ul of sterile water to dissolve the DNA.3. Close the tube and incubate for 10 minutes at room temperature.4. Briefly vortex the tube and then do a quick spin (less than 5000xg) to concentrate the liquid at the bottom.5. Store the suspended plasmid at -20°C. The DNA is stable for at least one year from date of shipping when stored at -20°C.
RefSeq:	NM_001142311.2
RefSeq Size:	3391 bp
RefSeq ORF:	894 bp
Locus ID:	92691
UniProt ID:	Q96HH4
Cytogenetics:	2q35
Protein Families:	Transmembrane