

Product datasheet for **RG226988**

Parvin gamma (PARVG) (NM_001137605) Human Tagged ORF Clone

Product data:

Product Type:	Expression Plasmids
Product Name:	Parvin gamma (PARVG) (NM_001137605) Human Tagged ORF Clone
Tag:	TurboGFP
Symbol:	PARVG
Mammalian Cell Selection:	Neomycin
Vector:	pCMV6-AC-GFP (PS100010)
E. coli Selection:	Ampicillin (100 ug/mL)
ORF Nucleotide Sequence:	>RG226988 representing NM_001137605 Red=Cloning site Blue=ORF Green=Tags(s)

TTTTGTAATACGACTCACTATAGGGCGGCCGGAATTCGTCGACTGGATCCGGTACCGAGGAGATCTGCC
GCC**CGATCGCC**

ATGGAGCCGGAGTTCTTGTACGACCTGCTGCAGCTCCCCAAGGGGGTGGAGCCCCAGCGGAGGAGGAGC
TCTCAAAGGAGGAAAGAAGAAATACCTGCCACCACTTCCCAGGAGACCCAAATTTGAAGAAGTCA
GAAGGTGTTGATGGAGTGGATCAATGCCACTCTCTCCCCGAGCACATTGTGGTCCGAGCCTGGAGGAG
GACATGTTGACGGGCTCATCTACACCACCTATCCAGAGGCTGGCGGCGCTCAAGCTGGAAGCAGAGG
ACATCGCCCTGACAGCCACAAGCCAGAAGCACAAAGCTCACAGTGGTCTGGAGGCCGTAACCCGGAGTCT
GCAGCTGGAGGAGTGGCAGGCCAAGTGGAGCGTGGAGAGCATCTTCAACAAGGACCTGTTGTCTACCCTG
CACCTCCTTGTGGCCCTGGCCAAGCGCTTCCAGCCGACCTCTCCCTCCAACCAACGTCCAGGTGGAGG
TCATCACTATCGAGAGCACAAAAGTGGTCTGAAGTCAGAGAAGTTGGTGGAACAGCTCACTGAATACAG
CACAGACAAGGACGAGCCTCAAAGGACGTCTTTGATGAATTATTTAAGCTGGCTCCGGAGAAAGTGAAC
GCAGTGAAGAGGCCATCGTGAACCTTGTCAACCAGAAGCTGGACCGCCTGGCCTGTCTGTGCAGAATC
TGGACACCCAGTTTGCAGATGGGGTCACTTACTCTTGTGATTGGACAACCTGAAGGCTTCTTCTGCA
CTTAAAGGAATTCTACCTCACTCCCAACTCTCCTGCAGAAATGCTGCACAACGTACCCTGGCGCTGGAG
CTGCTGAAGGACGAGGGCCTGCTCAGCTGCCCTGTCAGCCCTGAAGATATCGTGAACAAGGATGCCAAGA
GCACACTGCGGGTCTCTATGGTCTGTTCTGCAAGCACACGCAGAAGGCACACAGGGACAGGACGCCCA
TGGAGCCCCGAAT

ACGCGTACGCGGCCGCTCGAG - GFP Tag - GTTTAA



[View online »](#)

Protein Sequence: >RG226988 representing NM_001137605
Red=Cloning site Green=Tags(s)

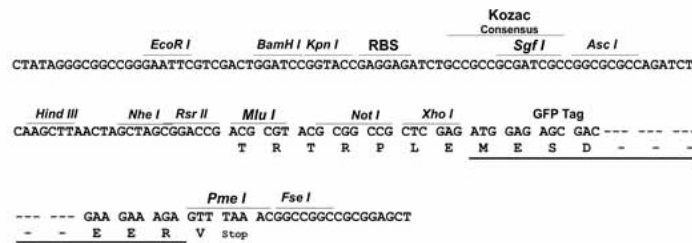
MEPEFLYDLLQLPKGVEPPAEEELSKGGKKKYLPTSRKDPKFEELQKVLMEWINATLLPEHIVVRSLEE
 DMFDGLILHHLFQRLAALKLEAEDIALTATSQKHKLTVVLEAVNRSLQLEEWQAKWSVESIFNKDLLSTL
 HLLVALAKRFQPDLSLPTNVQVEVITIESTKSLKSEKLVEQLTEYSTDKDEPPKDVFDLFLAPEKVN
 AVKEAIVNFVNQKLDRLGLSVQNLDTQFADGVILLLLIGQLEGFFLHLKEFYLTNPSPAEMLHNVTLAL
 LLKDEGLLSCPVPEDIVNKDAKSTLRVLYGLFCKHTQKAHRDRTPHGAPN

TRTRPLE - GFP Tag - V

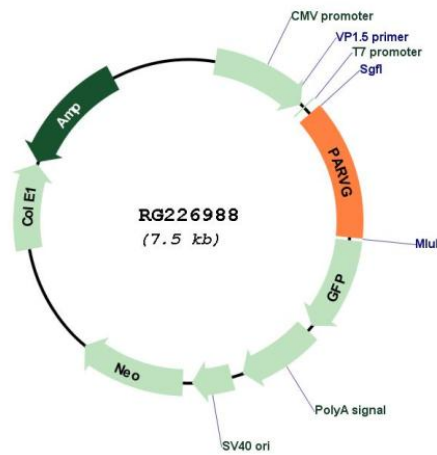
Restriction Sites: SgfI-MluI

Cloning Scheme:

Cloning sites used for ORF Shutting:



Plasmid Map:



ACCN: NM_001137605

ORF Size: 993 bp

OTI Disclaimer:	The molecular sequence of this clone aligns with the gene accession number as a point of reference only. However, individual transcript sequences of the same gene can differ through naturally occurring variations (e.g. polymorphisms), each with its own valid existence. This clone is substantially in agreement with the reference, but a complete review of all prevailing variants is recommended prior to use. More info
OTI Annotation:	This clone was engineered to express the complete ORF with an expression tag. Expression varies depending on the nature of the gene.
Components:	The ORF clone is ion-exchange column purified and shipped in a 2D barcoded Matrix tube containing 10ug of transfection-ready, dried plasmid DNA (reconstitute with 100 ul of water).
Reconstitution Method:	<ol style="list-style-type: none">1. Centrifuge at 5,000xg for 5min.2. Carefully open the tube and add 100ul of sterile water to dissolve the DNA.3. Close the tube and incubate for 10 minutes at room temperature.4. Briefly vortex the tube and then do a quick spin (less than 5000xg) to concentrate the liquid at the bottom.5. Store the suspended plasmid at -20°C. The DNA is stable for at least one year from date of shipping when stored at -20°C.
RefSeq:	NM_001137605.1 , NP_001131077.1
RefSeq Size:	2172 bp
RefSeq ORF:	996 bp
Locus ID:	64098
UniProt ID:	Q9HBI0
Cytogenetics:	22q13.31
Protein Pathways:	Adherens junction, Arrhythmogenic right ventricular cardiomyopathy (ARVC), Dilated cardiomyopathy, Focal adhesion, Hypertrophic cardiomyopathy (HCM), Leukocyte transendothelial migration, Pathogenic Escherichia coli infection, Regulation of actin cytoskeleton, Tight junction, Vibrio cholerae infection, Viral myocarditis
Gene Summary:	Members of the parvin family, including PARVG, are actin-binding proteins associated with focal contacts.[supplied by OMIM, Aug 2004]