

Product datasheet for **RG226963**

FGFR2 (NM_001144913) Human Tagged ORF Clone

Product data:

Product Type:	Expression Plasmids
Product Name:	FGFR2 (NM_001144913) Human Tagged ORF Clone
Tag:	TurboGFP
Symbol:	FGFR2
Synonyms:	BBDS; BEK; BFR-1; CD332; CEK3; CFD1; ECT1; JWS; K-SAM; KGFR; TK14; TK25
Mammalian Cell Selection:	Neomycin
Vector:	pCMV6-AC-GFP (PS100010)
E. coli Selection:	Ampicillin (100 ug/mL)



[View online »](#)

ORF Nucleotide Sequence:

>RG226963 representing NM_001144913
 Red=Cloning site Blue=ORF Green=Tags(s)

GACGTTGTATACGACTCCTATAGGGCGGCCGGGAATTCGTCGACTGGATCCGGTACCGAGGAGATCTGCC
 GCCGGCGCGCC

ATGGTCAGCTGGGGTCGTTTCATCTGCCTGGTCGTGGTACCATGGCAACCTTGTCCCTGGCCCGCCCT
 CCTTCAGTTTAGTTGAGGATACACATTAGAGCCAGAAGAGCCACCAACCAATACCAAATCTCTCAACC
 AGAAGTGTACGTGGCTGCGCCAGGGGAGTCGCTAGAGGTGCGCTGCCTGTTGAAAGATGCCGCCGTGATC
 AGTTGGACTAAGGATGGGGTGCCTTGGGGCCCAACAATAGGACAGTGCTTATTGGGGAGTACTTGCAGA
 TAAAGGGCGCCACGCCTAGAGACTCCGGCTCTATGCTTGTACTGCCAGTAGGACTGTAGACAGTAAAC
 TTGGTACTTCATGGTGAATGTCACAGATGCCATCTCATCCGGAGATGATGAGGATGACACCGATGGTGCG
 GAAGATTTTGTGAGTGAACAGTAACAACAAGAGAGCACCATACTGGACCAACACAGAAAAGATGGAAA
 AGCGGCTCCATGCTGTGCTGCGGCCAACACTGTCAAGTTTCGCTGCCAGCCGGGGGAACCAATGCC
 AACCATGCGGTGGCTGAAAACGGGAAGGAGTTTAAAGCAGGAGCATCGCATTGGAGGCTACAAGGTACGA
 AACGAGCACTGGAGCCTCATTATGGAAAGTGTGGTCCCATCTGACAAGGGAAATTAACCTGTGTAGTGG
 AGAATGAATACGGGTCCATCAATCACACGTACCACCTGGATGTTGTGGAGCGATCGCCTCACCGGCCAT
 CCTCCAAGCCGGACTGCCGGCAAATGCCTCCACAGTGGTCGGAGGAGACGTAGAGTTTGTCTGCAAGGTT
 TACAGTGTGCCAGCCCAATCCAGTGGATCAAGCAGTGGAAAAGAACGGCAGTAAATACGGGCCCCG
 ACGGGCTGCCCTACCTCAAGGTTCTCAAGCACTCGGGGATAAATAGTTCCAATGCAGAAGTGTGGCTCT
 GTTCAATGTGACCGAGGCGGATGCTGGGGAATATATGTAAGGTCTCCAATTATAGGGCAGGCCAAC
 CAGTCTGCCTGGCTCACTGTCTGCCAAAACAGCAAGCGCTGGAAGAGAAAAGGAGATTACAGCTTCCC
 CAGACTACCTGGAGATAGCCATTTACTGCATAGGGGCTTCTTAAATCGCCTGTATGGTGGTAAACATCAT
 CCTGTGCCGAATGAAGAACAGCAAGCAAGCCAGACTTCAGCAGCCAGCCGGCTGTGCACAAGCTGACC
 AAACGTATCCCCCTGCGGAGACAGGTAACAGTTTCGGCTGAGTCCAGCTCCTCCATGAACTCCAACACCC
 CGCTGGTGAAGATAACAACACGCCTCTCTTCAACGGCAGACACCCCATGCTGGCAGGGGTCTCCGAGTA
 TGAACTCCAGAGGACCAAAAATGGGAGTTTCCAAGAGATAAGCTGACTGGGCAAGCCCTGGGAGAA
 GGTTGCTTTGGGCAAGTGGTCATGGCGAAGCAGTGGGAATTGACAAAGACAAGCCCAAGGAGCGGTCA
 CCGTGGCCGTGAAGATGTTGAAAGATGATGCCACAGAGAAAGACCTTTCTGATCTGGTGTGACAGATGGA
 GATGATGAAGATGATTGGGAAACACAAGAATATCATAAATCTTCTGGAGCCTGCACACAGGATGGGCT
 CTCTATGTCATAGTTGAGTATGCCTCTAAAGGCAACCTCCGAGAATACCTCCGAGCCGGAGGCCACCCG
 GGATGGAGTACTCCTATGACATTAACCGTGTCTCTGAGGAGCAGATGACCTTCAAGGACTTGGTGTGATG
 CACCTACCAGCTGGCCAGAGGCATGGAGTACTTGGCTTCCAAAAATGTATTTCATCGAGATTTAGCAGCC
 AGAAATGTTTTGGTAACAGAAAACAATGTGATGAAAATAGCAGACTTTGGACTCGCCAGAGATATCAACA
 ATATAGACTATTACAAAAGACCACCAATGGGCGGCTTCCAGTCAAGTGGATGGCTCCAGAAGCCCTGTT
 TGATAGAGTATACACTCATCAGAGTGTGTCTGGTCTTCGGGGTGTAAATGTGGGAGATCTTCACTTTA
 GGGGGCTCGCCCTACCCAGGGATTCCCGTGGAGGAACCTTTTAAAGCTGCTGAAGGAAGGACACAGAAATGG
 ATAAGCCAGCCAACTGCACCAACGAAGTACATGATGATGAGGGACTGTTGGCATGCAGTGCCTCCCA
 GAGACCAACGTTCAAGCAGTTGGTAGAAGACTTGGATCGAATTCCTCACTCTCACAAACCAATGAGATC

ACGCGTACGCGGCCGCTCGAG – GFP Tag – GTTTAA

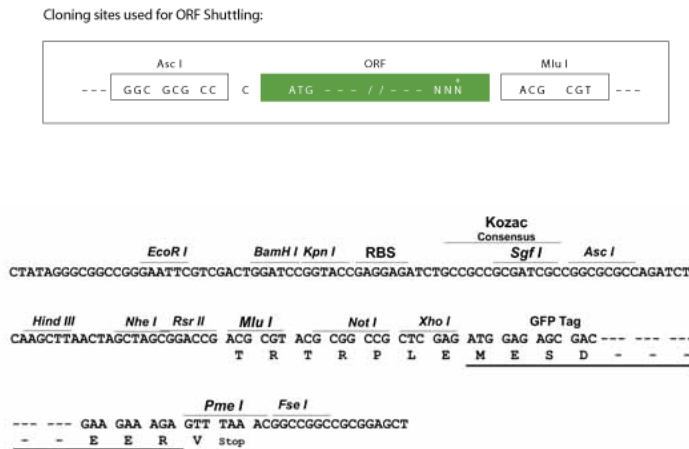
Protein Sequence: >RG226963 representing NM_001144913
Red=Cloning site Green=Tags(s)

```
MVSWGRFICLVVVTMATLSLARPSFSLVEDTTLEPEPPTYQISQPEVYVAAPGESLEVRCLLKDAAVI
SWTKDGVHLGPNRTVLIGEYLQIKGATPRDSGLYACTASRTVDESETWYFMVNVTDAISSGDEDDTDGA
EDFVSENSNNKRAPYWTNTEKMEKRLHAVPAANTVKFRCPAGGNPMPMTMRWLKNGKEFKQEHRIGGYKVR
NQHWSLIMESVVP SDKGN YTCV VENEYGSINHTYHLDVVERSPHRPILQAGLPANASTVVGDDVEFVCKV
YSDAQPHIQWIKHVEKNGSKYGPDGLPYLKVLKHSGINSSNAEVLALFNVTEADAGEYICKVSNYIQAN
QSAWLTVLPKQQAPGREKEITASPDYLEIAIYICIGVFLIACMVTVILCRMKNNTTKKPDFSSQPAVHKL
KRIPLRRQVTVSAESSSSMNSNTPLVRITRSLSTADTPMLAGVSEYELPEDPKWEFPRDKLTLGKPLGE
GCGFQVMAEAVGIDKDKPKEAVTVAVKMLKDDATEKDLSDLVSEMEMMKMIGKHKNINLLGACTQDGP
LYVIVEYASKGNLREYL RARRPPGMEYSYDINRVPEEQMTFKDLV SCTYQLARGMEYLASQKCIHRDLAA
RNVLV TENVMKIADFLARDINNIDYKKTNGRLPVKWM APEALFDRVYTHQSDVWSFGVLMWEIFTL
GGSPYPGIPVEELFKLLKEGHRMDKPA NCTNEL YMMMRDCWHAVPSQRPTFKQLVEDLDRILTLTTNEI
```

TRTRPLE - GFP Tag - V

Restriction Sites: AscI-MluI

Cloning Scheme:



ACCN: NM_001144913

ORF Size: 2307 bp

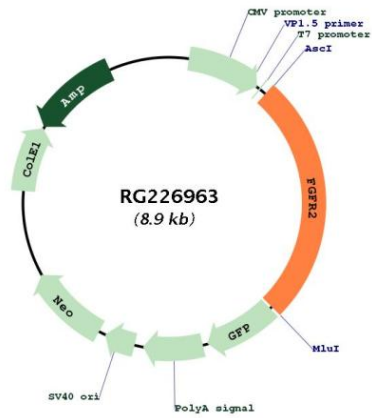
OTI Disclaimer: The molecular sequence of this clone aligns with the gene accession number as a point of reference only. However, individual transcript sequences of the same gene can differ through naturally occurring variations (e.g. polymorphisms), each with its own valid existence. This clone is substantially in agreement with the reference, but a complete review of all prevailing variants is recommended prior to use. [More info](#)

OTI Annotation: This clone was engineered to express the complete ORF with an expression tag. Expression varies depending on the nature of the gene.

Components: The ORF clone is ion-exchange column purified and shipped in a 2D barcoded Matrix tube containing 10ug of transfection-ready, dried plasmid DNA (reconstitute with 100 ul of water).

Reconstitution Method:	<ol style="list-style-type: none">1. Centrifuge at 5,000xg for 5min.2. Carefully open the tube and add 100ul of sterile water to dissolve the DNA.3. Close the tube and incubate for 10 minutes at room temperature.4. Briefly vortex the tube and then do a quick spin (less than 5000xg) to concentrate the liquid at the bottom.5. Store the suspended plasmid at -20°C. The DNA is stable for at least one year from date of shipping when stored at -20°C.
RefSeq:	<u>NM_001144913.1</u> , <u>NP_001138385.1</u>
RefSeq Size:	2781 bp
RefSeq ORF:	2310 bp
Locus ID:	2263
UniProt ID:	<u>P21802</u>
Cytogenetics:	10q26.13
Protein Families:	Druggable Genome, Protein Kinase, Secreted Protein, Transmembrane
Protein Pathways:	Endocytosis, MAPK signaling pathway, Pathways in cancer, Prostate cancer, Regulation of actin cytoskeleton
Gene Summary:	<p>The protein encoded by this gene is a member of the fibroblast growth factor receptor family, where amino acid sequence is highly conserved between members and throughout evolution. FGFR family members differ from one another in their ligand affinities and tissue distribution. A full-length representative protein consists of an extracellular region, composed of three immunoglobulin-like domains, a single hydrophobic membrane-spanning segment and a cytoplasmic tyrosine kinase domain. The extracellular portion of the protein interacts with fibroblast growth factors, setting in motion a cascade of downstream signals, ultimately influencing mitogenesis and differentiation. This particular family member is a high-affinity receptor for acidic, basic and/or keratinocyte growth factor, depending on the isoform. Mutations in this gene are associated with Crouzon syndrome, Pfeiffer syndrome, Craniosynostosis, Apert syndrome, Jackson-Weiss syndrome, Beare-Stevenson cutis gyrata syndrome, Saethre-Chotzen syndrome, and syndromic craniosynostosis. Multiple alternatively spliced transcript variants encoding different isoforms have been noted for this gene. [provided by RefSeq, Jan 2009]</p>

Product images:



Circular map for RG226963