

Product datasheet for **RG226953**

ABCG4 (NM_001142505) Human Tagged ORF Clone

Product data:

Product Type:	Expression Plasmids
Product Name:	ABCG4 (NM_001142505) Human Tagged ORF Clone
Tag:	TurboGFP
Symbol:	ABCG4
Synonyms:	WHITE2
Mammalian Cell Selection:	Neomycin
Vector:	pCMV6-AC-GFP (PS100010)
E. coli Selection:	Ampicillin (100 ug/mL)



[View online »](#)

ORF Nucleotide Sequence:

>RG226953 representing NM_001142505
 Red=Cloning site Blue=ORF Green=Tags(s)

TTTTGTAATACGACTCACTATAGGGCGGCCGGAATTCGTCGACTGGATCCGGTACCGAGGAGATCTGCC
 GCC**CGCATCGCC**

ATGGCGGAGAAGCGCTGGAGGCGCTGGGCTGTGGACTAGGGCCGGGGGTGTGGCCATGGCCGTGACGC
 TGGAGGACGGGGCGGAACCCCTGTGCTGACCACGCACCTGAAGAAGGTGGAGAACCACATCACTGAAGC
 CCAGCGCTTCTCCACCTACCAAGCGCTCAGCCGTGGACATCGAGTTCGTGGAGCTGTCTATTCCGTG
 CGGGAGGGCCCTGCTGGCGCAAAGGGTTATAAGACCCCTTCTCAAGTGCCTCTCAGGTAATTTGCC
 GCCGGGAGCTGATTGGCATCATGGGCCCTCAGGGGCTGGCAAGTCTACATTCATGAACATCTTGGCAGG
 ATACAGGGAGTCTGGAATGAAGGGGAGATCCTGGTTAATGGAAGGCCACGGGAGCTGAGGACCTCCGC
 AAGATGTCCTGCTACATCATGAAGATGACATGCTGCTGCCGCACCTCACGGTGTGGAAGCCATGATGG
 TCTCTGCTAACCTGAAGCTGAGTGAGAAGCAGGAGGTGAAGAAGGAGCTGGTACAGAGATCCTGACGGC
 ACTGGCCTGATGTCGTCTCCACACGAGGACAGCCCTGCTCTCTGGCGGCAGAGGAAGCGTCTGGCC
 ATCGCCCTGGAGCTGGTCAACAACCCGCTGTCATGTTCTTTGATGAGCCACCAGTGGTCTGGATAGCG
 CCTCTGTTTCAAGTGGTGTCCCTCATGAAGTCCCTGGCACAGGGGGCCGTACCATCATCTGCACCAT
 CCACCAGCCAGTGCCAAGCTCTTTGAGATGTTTGACAAGCTCTACATCCTGAGCCAGGGTCAAGTGCATC
 TTCAAAGGCGTGGTACCAACCTGATCCCTATCTAAAGGGACTCGGCTTGCATTGCCCCACCTACCACA
 ACCCGGCTGACTTCATCATCGAGGTGGCCTCTGGCGAGTATGGAGACCTGAACCCATGTTGTTCAAGGC
 TGTGCAGAATGGGCTGTGCGCTATGGCTGAGAAGAAGAGCAGCCCTGAGAAGAAGGAGTCCCTGCCCA
 TGCCCTCCTTGTCTCCGAAGTGGATCCCATTTGAAAGCCACACCTTTGCCACCAGCACCTCACACAGT
 TCTGCATCCTCTCAAGAGGACCTTCTGTCCATCCTCAGGGACACGGTCTGACCCACCTACGGTTCAT
 GTCCACGTGGTTATTGGCGTGTCTCATCGGCCTCCTCTACCTGCATATTGGCGACGATGCCAGCAAGGTC
 TTCAACAACACCGGCTGCCTCTTCTCCATGCTGTTCTCATGTTCCGCGCCCTCATGCCAAGTGTGC
 TCACCTTCCCCTTAGAGATGGCGGTCTTCATGAGGGAGCACCTCAACTACTGGTACAGCCTCAAAGCGTA
 TTACCTGGCCAAGACCATGGCTGACGTGCCCTTTCAGGTGGTGTGTCCGGTGGTCTACTGCAGCATTGTG
 TACTGGATGACGGGCCAGCCGCTGAGACCAGCCGCTTCTGCTTCTCAGCCCTGGCCACCGCCACCG
 CCTTGGTGGCCAATCTTGGGGCTGCTGATCGGAGCTGCTTCCAACCTACAGTGGCCACTTTTGT
 GGGCCAGTACCGCCATCCCTGTCTTCTTCTCCGGTCTTGTGTCAGCTTCAAGACCATCCCCTACT
 TACCTGCAATGGAGCTCCTATCTCTCTATGTCAGGTATGGCTTGGAGGTGTGATCCTGACGATCTATG
 GCATGGAGCGAGGAGACCTGACATGTTTAGAGGAACGCTGCCCGTTCCGGGAGCCACAGAGCATCCTCCG
 AGCGCTGGATGTGGAGGATGCCAAGCTCTACATGGACTTCTGGTCTTGGGCATCTTCTCTAGCCCTG
 CGGCTGCTGGCCTACCTGTGCTGCGTTACCGGGTCAAGTCAGAGAGA

ACGCGTACGCGGCCGCTCGAG - GFP Tag - GTTTAA

Protein Sequence:

>RG226953 representing NM_001142505
 Red=Cloning site Green=Tags(s)

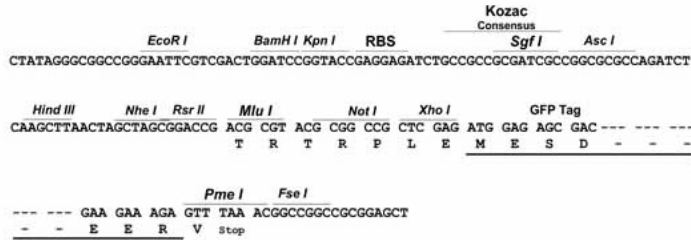
MAEKALEAVGCGLGPGAVAMAVTLEDGAEPVLTTHLKKVENHITAEQRFSHLPKRSAVDIEFVELSYSV
 REGPCWRKRGYKTLKCLSGKFCRRELIGIMPSGAGKSTFMNLAGYRESGMKGQILVNGRPRELRTFR
 KMSCYIMQDDMLLPHLTVLEAMMVSANLKLSEKQEVKKELVTEILTALGLMSCSHTRTALLSGGQRKRLA
 IALELVNPPVMFFDEPTSGLDASCFQVVSLMKSLAQGGRTIICTIHQPSAKLFEMFDKLYILSQGQCI
 FKGVVTLNIPYLKGLGLHCPYHNPADFIIEVASGEYGLNPMFLFRAVQNGLCAMAEEKSSPEKNEVPAP
 CPPCPPEVDPIESHTFATSTLTQFCILFKRTFLSILRDTVLTHLRFMSHVIVIGVLIIGLLYLHIGDDASKV
 FNNTGCLFFSMLFLMFAALMPTVLTFFLEMAVFMREHLNYWYSLKAYYLAKTMADVFPVQVVPVYCSIV
 YWMTGQPAETSRFLLFSALATATALVAQSLGLLIGAASNLSQVATFVGPVTAIPVLLSFGFFVSKTIPT
 YLQWSSYLSYVRYGFEGVILTIYGMERDGLTCLEERCPPREPQSIILRALDVEDAKLYMDFLVLGIFFLAL
 RLLAYLVLRYRVKSER

TRTRPLE - GFP Tag - V

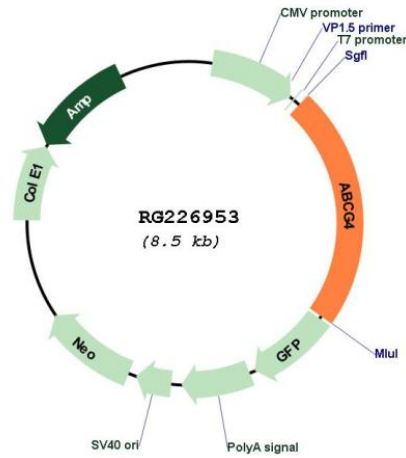
Restriction Sites: SgfI-MluI

Cloning Scheme:

Cloning sites used for ORF Shutting:



Plasmid Map:



ACCN: NM_001142505

ORF Size: 1938 bp

OTI Disclaimer:	The molecular sequence of this clone aligns with the gene accession number as a point of reference only. However, individual transcript sequences of the same gene can differ through naturally occurring variations (e.g. polymorphisms), each with its own valid existence. This clone is substantially in agreement with the reference, but a complete review of all prevailing variants is recommended prior to use. More info
OTI Annotation:	This clone was engineered to express the complete ORF with an expression tag. Expression varies depending on the nature of the gene.
Components:	The ORF clone is ion-exchange column purified and shipped in a 2D barcoded Matrix tube containing 10ug of transfection-ready, dried plasmid DNA (reconstitute with 100 ul of water).
Reconstitution Method:	<ol style="list-style-type: none">1. Centrifuge at 5,000xg for 5min.2. Carefully open the tube and add 100ul of sterile water to dissolve the DNA.3. Close the tube and incubate for 10 minutes at room temperature.4. Briefly vortex the tube and then do a quick spin (less than 5000xg) to concentrate the liquid at the bottom.5. Store the suspended plasmid at -20°C. The DNA is stable for at least one year from date of shipping when stored at -20°C.
RefSeq:	NM_001142505.1 , NP_001135977.1
RefSeq Size:	3650 bp
RefSeq ORF:	1941 bp
Locus ID:	64137
UniProt ID:	Q9H172
Cytogenetics:	11q23.3
Protein Families:	Druggable Genome, Transmembrane
Protein Pathways:	ABC transporters
Gene Summary:	The protein encoded by this gene is a member of the ATP-binding cassette (ABC) transporter superfamily. ABC proteins transport various molecules across extra- and intra-cellular membranes. ABC genes are divided into seven distinct subfamilies (ABC1, MDR/TAP, MRP, ALD, OABP, GCN20, White). The encoded protein is a member of the White subfamily and plays an important role in cellular cholesterol homeostasis. This protein functions as either a homodimer or as a heterodimer with another ABC subfamily protein such as ABCG1. [provided by RefSeq, Jan 2017]