

Product datasheet for **RG226933**

SEC13L1 (SEC13) (NM_001136232) Human Tagged ORF Clone

Product data:

Product Type:	Expression Plasmids
Product Name:	SEC13L1 (SEC13) (NM_001136232) Human Tagged ORF Clone
Tag:	TurboGFP
Symbol:	SEC13L1
Synonyms:	D3S1231E; npp-20; SEC13L1; SEC13R
Mammalian Cell Selection:	Neomycin
Vector:	pCMV6-AC-GFP (PS100010)
E. coli Selection:	Ampicillin (100 ug/mL)
ORF Nucleotide Sequence:	>RG226933 representing NM_001136232 Red=Cloning site Blue=ORF Green=Tags(s)

TTTTGTAATACGACTCACTATAGGGCGGCCGGAATTCGTCGACTGGATCCGGTACCGAGGAGATCTGCC
GCC**CGATCGCC**

ATGGTGTCAGTAATTAACACTGTGGATACCTCCCATGAGGACATGATTCACGACGCCAGATGGACTACT
ATGGCACCCGCTGGCAACCTGCTCATCAGACAGGTCGGTCAAAATCTTTGATGTGCGCAATGGAGGGCA
GATCCTTATCGCCGACCTCAGGGGTCATGAGGGTCTGTGTGGCAAGTGGCTGGGCTCACCCCATGTAC
GGCAACATCCTGGCATCGTGCTCCTATGACCGGAAAGTCATTATCTGGAGAGAGGAAAACGGCACCTGGG
AGAAGAGCCACGAGCATGCGGGACAGACTCCTCAGTGAAGTGGTGTGCTGGGCCCCCATGACTACGG
CCTGATCCTGGCCTGTGGGAGCTCGGATGGGGCCATCTCCTGCTGACTTACACCGGGAAGGCCAATGG
GAAGTAAAGAAGATCAACAACGCTCACACCATTGGCTGCAATGCCGTGAGCTGGGCCCTGCTGTTGTAC
CTGGAAGCCTCATAGACCACCCATCGGGGAGAGAAACCAATTACATCAAGAGGTTTGCATCAGGTGGCTG
TGACAACCTCATCAAGCTGTGGAAGGAGGAGGAGGACGGCCAGTGAAGGAGGAGCAGAAGCTAGAAGCG
CACAGTACTGGGTTGAGATGTGGCTGGGCCCCCTCCATCGGCTGCCACCAGCACCATCGCCAGCT
GCTCCCAGGATGGTGTGTTTCAATTTGGACCTGTGATGATGCCTCAAGCAATACGTGGTCCCCTAAATT
GTTGCACAAGTTCAACGATGTGGTGTGGCATGTGAGCTGGTCCATCACAGCCAACATCCTGGCTGTCTCT
GGTGGAGACAATAAGGTGACCCGTGGAAGGAGTCAGTTGATGGGCAGTGGGTGTGCATCAGTGTGCA
ACAAGGCCAGGGCTCCGTATCAGCATCAGTGACAGAGGGCCAGCAGAACGAGCAG

ACGCGTACGCGGCCGCTCGAG - GFP Tag - GTTTAA



[View online »](#)

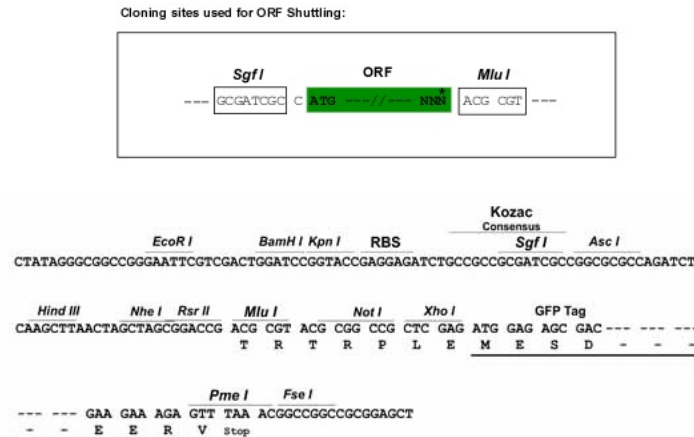
Protein Sequence: >RG226933 representing NM_001136232
 Red=Cloning site Green=Tags(s)

MVSVINTVDTSHEDMIHDAQMDYYGTRLATCSSDRSVKIFDVRNGGQIL IADLRGHEGPVWQVAWAHPMY
 GNILASCSYDRKVI IWREENGTEWKSHEHAGHDSSVNSVCWAPHDYGL I LACGSSDGAISLLTYTGEGQW
 EVKKINNAHTIGCNAVSWAPAVVPGSL IDHPSGQKPNYIKRFASGGCDNL IKLWKEEEDGQWKKEQKLEA
 HSDWVRDVAWAPSIGLPTSTIASCSQDGRVFIWTCDDASNTWSPKLLHKFNDVVVHVSWSITANILAVS
 GGDNKVTLWKESVDGQWVICISDVNKGQGSVSASVTEGQQNEQ

TRTRPLE - GFP Tag - V

Restriction Sites: SgfI-MluI

Cloning Scheme:



ACCN: NM_001136232

ORF Size: 924 bp

OTI Disclaimer: The molecular sequence of this clone aligns with the gene accession number as a point of reference only. However, individual transcript sequences of the same gene can differ through naturally occurring variations (e.g. polymorphisms), each with its own valid existence. This clone is substantially in agreement with the reference, but a complete review of all prevailing variants is recommended prior to use. [More info](#)

OTI Annotation: This clone was engineered to express the complete ORF with an expression tag. Expression varies depending on the nature of the gene.

Components: The ORF clone is ion-exchange column purified and shipped in a 2D barcoded Matrix tube containing 10ug of transfection-ready, dried plasmid DNA (reconstitute with 100 ul of water).

Reconstitution Method:

1. Centrifuge at 5,000xg for 5min.
2. Carefully open the tube and add 100ul of sterile water to dissolve the DNA.
3. Close the tube and incubate for 10 minutes at room temperature.
4. Briefly vortex the tube and then do a quick spin (less than 5000xg) to concentrate the liquid at the bottom.
5. Store the suspended plasmid at -20°C. The DNA is stable for at least one year from date of shipping when stored at -20°C.

RefSeq: [NM_001136232.1](#), [NP_001129704.1](#)

RefSeq Size: 1490 bp

RefSeq ORF: 927 bp

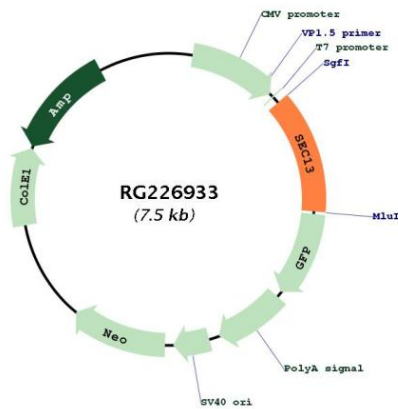
Locus ID: 6396

UniProt ID: [P55735](#)

Cytogenetics: 3p25.3

Gene Summary: The protein encoded by this gene belongs to the SEC13 family of WD-repeat proteins. It is a constituent of the endoplasmic reticulum and the nuclear pore complex. It has similarity to the yeast SEC13 protein, which is required for vesicle biogenesis from endoplasmic reticulum during the transport of proteins. Multiple alternatively spliced transcript variants have been found. [provided by RefSeq, Oct 2008]

Product images:



Circular map for RG226933