

Product datasheet for **RG226921**

FAM194B (ERICH6B) (NM_182542) Human Tagged ORF Clone

Product data:

Product Type:	Expression Plasmids
Product Name:	FAM194B (ERICH6B) (NM_182542) Human Tagged ORF Clone
Tag:	TurboGFP
Symbol:	ERICH6B
Synonyms:	FAM194B
Mammalian Cell Selection:	Neomycin
Vector:	pCMV6-AC-GFP (PS100010)
E. coli Selection:	Ampicillin (100 ug/mL)



[View online »](#)

ORF Nucleotide Sequence:

>RG226921 ORF sequence, **codon optimized**.
Due to the complexity of NM_182542, the ORF clone is codon optimized for mammalian Expression.
The nucleotide sequence differs from the reference sequence, yet the amino acid sequence remains identical.

Red=Cloning site Blue=ORF Green=Tags(s)

TTTTGTAATACGACTCACTATAGGGCGCCGGGAATTCGTCGACTGGATCCGGTACCGAGGAGATCTGCC
 GCC**CGCATCGCC**

ATGTCTGCTGAGAATAATCAGCTGAGCGGGGCGTCCCCCCTCATCTCCACAACCCACAGTACAGCA
 CCCAGAATCTGCCCTCTGAGAAGGAGGATACCGAGGTGGAATTGGATGAGGAGTCTTTCAGGATGAATC
 CCCATTACGCCCAGGGCGAGTCTCTGGAAGATAAAGAGTACCTCGAGGAGGAAGAAGATCTGGAAGAG
 GAGGAGTATTTGGCAAAGAGGAGTATCTCAAAGAAGAAGAATACCTTGGCAAGGAGGAACACCTCGAGG
 AAGAGGAGTACCTTGAGAAGGCAGGATATCTCGAGGAGGAAGAATATATAGAAGAGGAGGAATACCTGGG
 CAAAGAGGGCTACCTGGAGGAGGAGGAGTACCTGGGAAAAGAGGAACACCTGGAGGAGGAGGAATACTTG
 GGCAAAGAAGGCTATCTGGAGAAGGAGGACTATATCGAAGAGGTGGATTATCTCGGGAAGAAAGCCTATC
 TCGAGGAAGAAGAGTACTTGGGAAAAGAGGTTATCTGGAAGAAGAGAAGGCCCTGGAGAAGGAGGAGAA
 CTTGGAGGAGGAGGAAGCCCTTGAGAAAAGAGGAGAATCTCGATGGCAAGGAGAATCTTTATAAGAAATAT
 CTCAAGGAGCCGAAAGCTAGCTACTCAAGCCAGACAATGCTCCTCCGCGACGCTAGATCACCTGACGCGG
 GCCCTTCCAGGTTACCACGTTCTCACTGTACCTCTGACCTTCGCTACCCCATCACCTGTCTCCGAGTC
 TGCTACTGAGAGTAGCGAACTGCTGCTCACACTGTATAGAAGGTCCCAAGCATCTCAGACTGACTGGTGC
 TAGCACCAGGACCCGCTCAAGTCCCTGAAAAGTAAAAGTGAGACTGAGCAAGAGACTACCCAAAACTTG
 CACCCGAAGAGCATGTGAACACTAAAGTGCAGCAGAAAAAGGAGGAGAACGTTCTGGAATTCGCCTCAAA
 AGAAAAATTTCTGGGATGGGATTACGGATGAGAGTATCGATAAGCTGGAAGTCAAGACCTGGATGAGAAC
 TTTCTGAACTCTAGCTATCAGACAGTATTCAAGACCATCATCAAAGAGATGGCTGCACACAATGAGCTGG
 AGGAGGATTTGACATTCGCTTACTAACTCCTGGAAAGCGAGAACAGGTGGAAGCTGGTATAATGCT
 GAAAAAGAATTATGAAAAGTTAAAGAAACCATTCTCCGATTAAGCGGAGGCGGGAGGCACAGAACTT
 ACTGAGATGACATCCTTACCTTCCATCTGATGTCTAAGCCGACCCAGAGAACTGAAACCGAGGAGA
 TTCAGAAACCTCAGCGGGTCTGCACCACAGGAAGAACTTGAACGGGACAAAGAGTGGATCCAAAAGAA
 GACTGTGGTGCACCAGGAGACGGGAACTGATCCTTTACCCAAATAAGAACGTGTACCAGATCCTGTTC
 CCAGATGGCACCGGCAAATTCCTACCCCTCCGTAATCTGGCTATGTTGATTCTGTACGCCAAGATGA
 AAAAGTTCACCTACATTATTTGGAAGATAGCCTGGAGGGCCGAATCCGCGCACTGATAAAATAATCCGG
 CAACGCTACATTCACGACGAAACTCTGATATATGGTGAACCTGAGCAGCAATTTGGGATACTATTTT
 CCCAAAGATAAGAGACAGAAGGCTGGAACCTGGTGAACCTCAATATCCACGTGCATGCTCCACCTGTGC
 AGCCCATCAGCCTGAAGATCAACGAGTACATAAAGTACAGATCAGATCCCAGGATAAGATTATTTTCTG
 TTTCACTTATGAGCAGAAGCAGATTTGTTTGAACCTCGGCACCAGGTACAAGTTCGTGATCCAGAAGTG
 CTGAGTGAGATGAAAAAGAAAATACTGAGGAGCCGAGCCGGCCGACTGCCAGAAAAATAGGGTGC
 TTCTGGGTAAAAATGAATAGGCTCCTCAATTACGCTACAACCCCGGACCTGGAAAAATTTATTGAAGCAGT
 TAGCATATCCCTCATGGATAACAAGTATCTTAAGAAGATGCTCTCCAAATTGTGGTTT

ACGCGTACGCGGCCGCTCGAG – GFP Tag – GTTTAA

Protein Sequence: >RG226921 representing NM_182542
 Red=Cloning site Green=Tags(s)

MSAENQLSGASPPHPPTTPQYSTQNLPSKEKEDTEVELDEESLQDESPFSPEGESLEDKEYLEEEEDLEE
 EEYLGKEEYLKEEEYLGKEEHLEEEYLEKAGYLEEEYIEEEYLGKEGYLEEEYLGKEEHLEEEYLG
 GKEGYLEKEDYIEVDYLGKKAYLEEEYLGKKSYLEEEKALEKEENLEEEALEKEENLDGKENLYKKY
 LKEPKASYSSQTMLLRDARSPDAGPSQVTTFLTVPLTFATPSPVSESAATESSELLTLTYRRSQASQTDWC
 YDRTAVKSLKSKSETEQETTTKLAPEEHVNTKVQQKEENVLEFASKENFWDGITDESIDKLEVEDLDEN
 FLNSSYQTVFKTIKEMA AHNELEEDFDIPLTKLLESENWKLVIMLKKNYEKFKETILRIKRRREAQKL
 TEMTSFTFHLMSKPTPEKPETEEIQKPQRVVHHRKKLERDKEWIQKKTVVHQGDGKLI LYPNKNVYQILF
 PDGTGQIHYPGSLAMLILYAKMKKFTYIILEDSEGRIRALINNSGNATFYDENSIDLNLSSNLGYFF
 PKDKRQKAWNWNLNIIHVHAPPVQPI SLKINEYIQVQIRSDKIIFCFTYEQKQICLNLGTRYKFKVPEV
 LSEMKKKTILEAEPGPTAQKIRVLLGKMNRLLNYATTPDLENFIEAVSISLMDNKYLKMLSKLWF

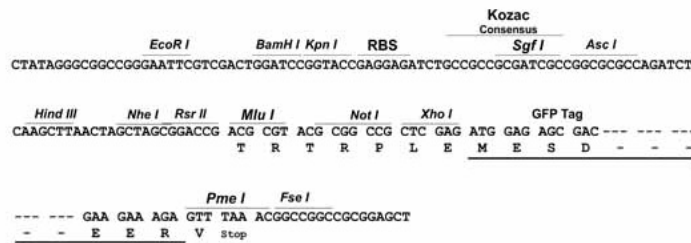
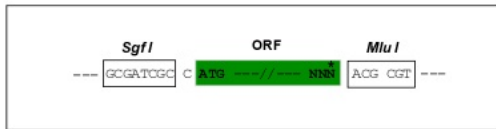
TRTRPLE - GFP Tag - V

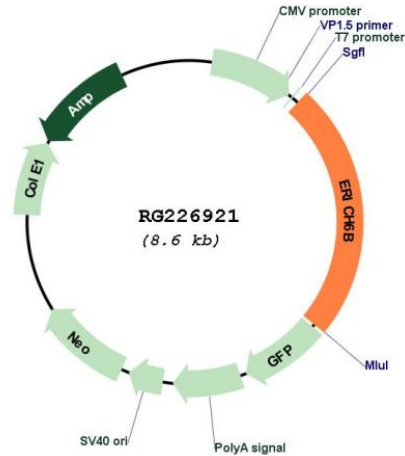
Restriction Sites:

SgfI-MluI

Cloning Scheme:

Cloning sites used for ORF Shuttling:



Plasmid Map:


ACCN: NM_182542

ORF Size: 2088 bp

OTI Disclaimer: The molecular sequence of this clone aligns with the gene accession number as a point of reference only. However, individual transcript sequences of the same gene can differ through naturally occurring variations (e.g. polymorphisms), each with its own valid existence. This clone is substantially in agreement with the reference, but a complete review of all prevailing variants is recommended prior to use. [More info](#)

OTI Annotation: This clone was engineered to express the complete ORF with an expression tag. Expression varies depending on the nature of the gene.

Components: The ORF clone is ion-exchange column purified and shipped in a 2D barcoded Matrix tube containing 10ug of transfection-ready, dried plasmid DNA (reconstitute with 100 ul of water).

Reconstitution Method:

1. Centrifuge at 5,000xg for 5min.
2. Carefully open the tube and add 100ul of sterile water to dissolve the DNA.
3. Close the tube and incubate for 10 minutes at room temperature.
4. Briefly vortex the tube and then do a quick spin (less than 5000xg) to concentrate the liquid at the bottom.
5. Store the suspended plasmid at -20°C. The DNA is stable for at least one year from date of shipping when stored at -20°C.

RefSeq: [NM_182542.2](#), [NP_872348.2](#)

RefSeq Size: 2421 bp

RefSeq ORF: 2091 bp

Locus ID: 220081

UniProt ID: [Q5W0A0](#)

Cytogenetics: 13q14.13