

## Product datasheet for **RG226902**

### Prostaglandin dehydrogenase 1 (HPGD) (NM\_001145816) Human Tagged ORF Clone

#### Product data:

**Product Type:** Expression Plasmids  
**Product Name:** Prostaglandin dehydrogenase 1 (HPGD) (NM\_001145816) Human Tagged ORF Clone  
**Tag:** TurboGFP  
**Symbol:** HPGD  
**Synonyms:** 15-PGDH; PGDH; PGDH1; PHOAR1; SDR36C1  
**Mammalian Cell Selection:** Neomycin  
**Vector:** pCMV6-AC-GFP (PS100010)  
**E. coli Selection:** Ampicillin (100 ug/mL)  
**ORF Nucleotide Sequence:** >RG226902 representing NM\_001145816  
 Red=Cloning site Blue=ORF Green=Tags(s)

TTTTGTAATACGACTCACTATAGGGCGCCGGGAATTCGTCGACTGGATCCGGTACCGAGGAGATCTGCC  
 GCC**CGATCGCC**

ATGCACGTGAACGGCAAAGTGCGCTGGTGACCGCGCGGCTCAGGGCATAGGCAGAGCCTTTGCAGAGG  
 CGCTGCTGCTTAAGGGCGCCAAGGTAGCGCTGGTGGATTGGAATCTTGAAGCAGGTGTACAGTGTAAGC  
 TGCCCTGGATGAGCAGTTTGAACCTCAGAAGACTCTGTTCCAGTGGATGTGGCTGACCAGCAACAA  
 CTGAGAGACACTTTTAGAAAAGTTGTAGACCACCTTGAAGACTGGACATTTGGTCAATAATGCTGGAG  
 TGAATAATGAGAAAACTGGGAAAAACTCTGCAATTAATTTGGTTTCTGTTATCAGTGAACCTATCT  
 TGGTTTGGATTACATGAGTAAGCAAAATGGAGGTGAAGCGGCATCATTATCAATATGTCATCTTTAGCA  
 GGACTCATGCCCGTTGCACAGCAGCCGGTTTATTGTGCTCAAAGCATGGCATAGTTGGATTACACCGCT  
 CAGCAGCGCCACCATTGATTGCCAATGGATTGATAACACTCAT

**ACGCGT**ACGCGGCGGCTCGAG - GFP Tag - GTTTAA

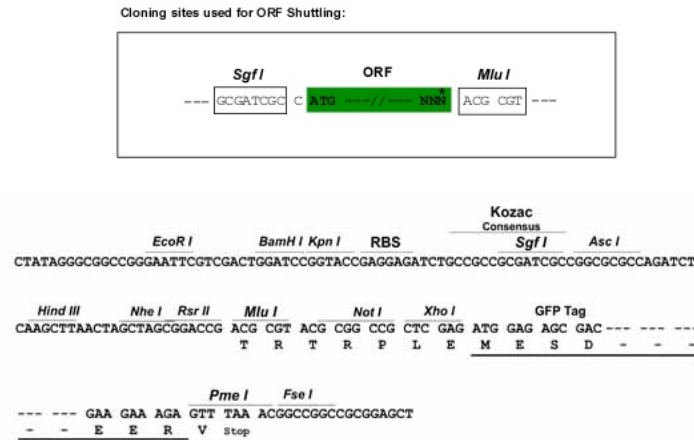
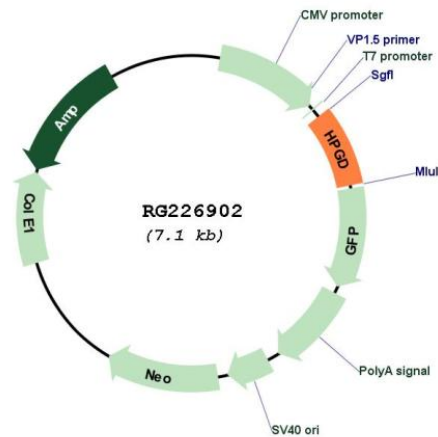
**Protein Sequence:** >RG226902 representing NM\_001145816  
 Red=Cloning site Green=Tags(s)  
 MHVNGKVALVTGAAQIGRAFAEALLLKAKVALVDWNLEAGVQCKAALDEQFEPQKTLFIQCDVADQQQ  
 LRDTFRKVVDFHGRDLILVNNAGVNNNEKNWEKTLQINLVSVISGTYLGLDYMSKQNGGEGGIINMSSLA  
 GLMPVAQQPVYCASKHGIVGFTRSAAPTIDCQWIDNTH

**TRTRPLE** - GFP Tag - V

**Restriction Sites:** SgfI-MluI



[View online »](#)

**Cloning Scheme:**

**Plasmid Map:**


**ACCN:** NM\_001145816

**ORF Size:** 534 bp

**OTI Disclaimer:** The molecular sequence of this clone aligns with the gene accession number as a point of reference only. However, individual transcript sequences of the same gene can differ through naturally occurring variations (e.g. polymorphisms), each with its own valid existence. This clone is substantially in agreement with the reference, but a complete review of all prevailing variants is recommended prior to use. [More info](#)

**OTI Annotation:** This clone was engineered to express the complete ORF with an expression tag. Expression varies depending on the nature of the gene.

<b>Components:</b>	The ORF clone is ion-exchange column purified and shipped in a 2D barcoded Matrix tube containing 10ug of transfection-ready, dried plasmid DNA (reconstitute with 100 ul of water).
<b>Reconstitution Method:</b>	<ol style="list-style-type: none"><li>1. Centrifuge at 5,000xg for 5min.</li><li>2. Carefully open the tube and add 100ul of sterile water to dissolve the DNA.</li><li>3. Close the tube and incubate for 10 minutes at room temperature.</li><li>4. Briefly vortex the tube and then do a quick spin (less than 5000xg) to concentrate the liquid at the bottom.</li><li>5. Store the suspended plasmid at -20°C. The DNA is stable for at least one year from date of shipping when stored at -20°C.</li></ol>
<b>RefSeq:</b>	<u><a href="#">NM_001145816.3</a></u>
<b>RefSeq Size:</b>	2623 bp
<b>RefSeq ORF:</b>	537 bp
<b>Locus ID:</b>	3248
<b>UniProt ID:</b>	<u><a href="#">P15428</a></u>
<b>Cytogenetics:</b>	4q34.1
<b>Protein Families:</b>	Druggable Genome
<b>Gene Summary:</b>	This gene encodes a member of the short-chain nonmetalloenzyme alcohol dehydrogenase protein family. The encoded enzyme is responsible for the metabolism of prostaglandins, which function in a variety of physiologic and cellular processes such as inflammation. Mutations in this gene result in primary autosomal recessive hypertrophic osteoarthropathy and cranioosteoarthropathy. Multiple transcript variants encoding different isoforms have been found for this gene. [provided by RefSeq, Mar 2009]