

Product datasheet for **RG226898**

SSC5D (NM_001144950) Human Tagged ORF Clone

Product data:

Product Type:	Expression Plasmids
Product Name:	SSC5D (NM_001144950) Human Tagged ORF Clone
Tag:	TurboGFP
Symbol:	SSC5D
Synonyms:	S5D-SRCRB
Mammalian Cell Selection:	Neomycin
Vector:	pCMV6-AC-GFP (PS100010)
E. coli Selection:	Ampicillin (100 ug/mL)
ORF Nucleotide Sequence:	>RG226898 representing NM_001144950 Red=Cloning site Blue=ORF Green=Tags(s)

TTTTGTAATACGACTCACTATAGGGCGGCCGGAATTCGTCGACTGGATCCGGTACCGAGGAGATCTGCC
GCC**CGATCGCC**

ATGAGGGTCTTGGCCTGCCTCCTTGC GGCCCTGGTGGGGATCCAGGCTGTTGAGCGCCTGCGCCTGGCCG
ATGGCCCCATGGGTGCGCTGGCCGCTGGAGGTCTGGCATGGCGGGCGCTGGGGACCGTGTGTGATGA
CGGCTGGGACCTGCGCGATGCCCGCTGGCCTGCCGCGAGCTGGGCTGCGGAGGGGCACTGGCCGCCCCG
GGAGGCGCCTTCTCGGGAGGGGGCAGGGCCTGTGTGGCTCAGCGAGCTGGCTTGCCGGGGCAACGAGG
GGCAGCTGGGCCCTGCCACCACCGGGGCTGGAAGGCCACATCTGCTCCACGAGGAGGACGCGGGCGT
CGTCTGCGCAGGTGAGCTGTGGCTAACTCCAGGGACGACTCAACATCTCCCTGGATGGGGCTCCCTGG
CCAGGGCTGTTGCTGGAGCTGAGCCCCAGCACGGAGGAGCCCCTGGTGACACATGCCCCCCGCCAGCTG
GGAACCCCAAGACGCTCCCGGAAGAAGAGCCCCCGGCCAAGCAGGCCAAGTCCACCCGGGCCCTCT
GCTGACGACAGGAGCCCCCGCAAGAGCGGCTGCGCCTGGTCTCTGGCCCCACAGGTGCGCCGGACGC
CTGGAGGTCTGGCAGCGGGGCGCTGGGGACCGTATGTGACGATGGCTGGGACCTGCGCGACGCTGCTG
TAGCCTGCCGGGAACGGGCTGTGGGGGGCGCTGGCTGCCCGGGCGGTGCCAGATTCGGGCTGGTGC
AGGGCCCGTGTGGATGGACGATGTGGGTGTGGAGGAGGAGAACAGGCCCTCCGAGACTGCCCGCAAGC
CCCTGGGGCCGGAGCAACTGTGACCACAGCGAGGATGCGGGGCTGGTCTGCACCGCCAGCACCTCGGC
TGCGCCTGGCCGATGGCCCCACGGGTGCGCCGGCCGCTGGAGGCTTGCGACGGGGTCCCTGGGGGTC
GGTGTGTGACGACGCTGGGACCTGCGAGACGCCGCTGTGGCCTGCCGAGAGCTGGGCTGCGGAGGGGCG
CTGGCCGCCCCGGGGCGCCTTCTTTGGGAGGGGTCTGGACCCATCATCTGGACGACCTTCGGTGTG
GGGAAACGAGACGGCCTTACGATTCTGCCAGCTCGGCCCTGGGGCCAGCATGACTGTACCACCCGCA
GGACGCCGGGGCGTGTGTGACGGCATGCCCTGGGCTACGTCCCTCCACGGCCCCACGGACAGCAAC
AACTCCACGCCAGGGAGGCTGCCTCCAGGCCCGTCCACCATGACGAGCCAGGCTCCAGGGACGGCAG
GCGTTTACCTCCTCCAGCCTCCCTACTGTCTTTGGGAGCCTGGACCGGAAGCCGGTCCCCCAGCT
GCGCCTGGTGGTGGGCCAGCAAGTGTCTCAGGTCGACTGGAGGTGTGGCATGACCAGCGCTGGGGACC



[View online »](#)

GTGTGTGACGATAGCTGGGACATGCGGGATTACAGCTGTGGTCTGCCGGGAGCTGGGCTGTGGTGGACCTC
AGCAGCCAGACCTGCTGCTGGCCGCTTTGGCTGGGGTGCGGGCCCATCTGGCTAGATGATGTGGGCTG
TGTGGGGACCGAGGCTTCACTGTCCGACTGCCCTGCTGCTCCCTGGGAAAGCACAACCTGCGCTCACAAT
GAGGATGTTGGGGTCACTGCCTGACTGGGCCCCAGGCTGGACTCCATCTCAGACCCTTCAGCTGGAGCT
GGATTCCTGGACTGGGGAGAGATCGGGATGCCTGGCTCCCGGGAGAGCTGGCCACCAAGCCCTCTGCAAG
TGTGACTGCCAGTGTCTGGAGAAAACAACCACGAAGGCCCCAGGGAAAATGCCTAAGAGTACTAAGAAG
TGGGTGACAAAAATGCAAAGAGACCAACCCTCAACCCCACTGATGCCAACCAAGCAACTCCAGGG
CCCAAAGCCCCAGACCTAACCTCACAGACCACTGCAGCACTGACCCTGAGGCCCTCCGAAGACCTAC
CTCTGAGTTTACCAGAAGGCCGACCACGGAGGCCCCAGAGATGGACCTCTCACACCACTGCCACGCTG
ACCCCTCAGGCCCCCGAGAACGGACCACTAAGACCATGGCAATGCTGACCACTCAAGGCCCCCAAGAAA
TGACCTCTGAGTCCACTATCAAGAGTATCCCTCAGGCCTCCCTGGAGCCATCTGCTGAGATCCCAGAAGG
GTCTCCAGAGTACCCAAAGACCCGCCCCCTCTCCAGTGTAGCACCCTGGGAATCAGGCCTGTTT
CGGGTTCGCTGGCCGATGGGCCAACCCGCTGTGCTGGCCGGCTGGAAGTGTGGCATGCCGGACGCTGGG
GAACAGTGTGTGATGACAACTGGGACCTGCGGGACGCCACTGTGGCTGTGGAACTGGGCTGTGGAAA
GGTCCGGCCTCGAGTAGGCAAAACCCATTACGGCCCTGGGACTGGGCCATCTGGCTGGATGACATGGGC
TGTAAGGGAAAGCGAGGCCCTCACTGAGCGACTGCCCTCGGGGGCTTGGGGGAAGCACAACCTGTGACCAG
AGGAAGACGTGGGGCTCACCTGCACTGGCTACACAGACTATGACGATTATCCCCCTGGACCTGGGACCC
CACCTCAAGAGAGGACCTGGCCAAGGGGACTACCACAGCGGGGTACCTGGACACTCTCCCTGGAGG
ACCACCCGGCGCCGGTAGTCTCTCCAGCAATAAGGCGCCTGCCGGACACAGGCAGCAAAAGATGGTT
ACAAGTTCCTGGACGTGGGACACACCATCAGGAAGGGGCTGGCTGAGGGGACCCCTACCGCAGGCAA
ACTAGGACCAACTCTGGGGTGGCACCACCAGGAGCCAGGCAGTCTCCAACCTGAGAGTCCATGGA
GACACAGGTTCCCGAGGAAACCGTGGCCGAGCGCCGCCACCCGCGCCGCTGCGACCAAGGACAGCGC
CCCCAACCCGTCCTCCAGTCCCTCCGCTCTCCGGGACCCCAAGGCCAGCGCTGACCTGACTGACCTCAG
TGGAGAGCTCACTCCCACTCAGCCTTGACGTCGAGGGGACCTCTGACGCTCCGGACACTTCACCAACC
ACCCAGACCCGCTCCCGGACGAACCCGACCTCATCTTGACAAGCCCTGACTTTGCTTTGTCCACCC
CTGACTCCAGTGTGGTTCCCGCTTGACCCGGAGCCCTCACCCAGCCCTTACCCACCTTGCCCAAAGA
GCTGACCTCTGACCCCTTACACCGTGGAGGTGACCAGCCTTCCCTACCTCAGAGCAGGTCCCAGAA
TCTGACACAACCCAGATTTGGACACAACCTCCATACTCCAGTACAGTCTCAGAATATTCTAGATCCCAG
ACCCCTCCCAAGCCCTCACCCACTACTACCCCTGATCCCACCATGGCCCTGACCCCATCACAACCT
TAACCTACTGTGACCCCTCACTTCCCTACCACCCCTCACCCACCAGCCCTCACCCACCACCATC
ACTCACTCCACCATGATTCTGACCCACCACAACCCCTCAACCTTACCACCATCACTCACTCCACCA
TGATTCTGACCCACCACAACCCCTCAACCTTACCACCATGCAGCCACCACAACCCCTCACTCCAC
AACCCCTCACCCACCAGCCCTCATCCACCACCATCACTCACTCCACCATGATTCTGACCCACC
ACAACCCCTCAACCTTACCACCATGCAGCCACCACGATGCCTCATCCACCAGCCCTCACCCCA
CCACGACTCTCACCCACCACAACCCCTCACCCACCACAACCCCTCACCCACCATGACTCTGACCC
CACCAGACCCCTTACCCACCCTACTCTGATCCACCAGCCCTCACCCACAACCTCTGACCCCT
TCCTCAACCCCTGTCATCACTACTGTGTCCCTTCAACCTCTTGGGGACAGAATCTCTCTCCACTC
TAGCACCAACAGTCAAGCCAGTCTGCACCCCAAGTGGACCTTACAGCACCTGCCCTCACACCTCCAC
ATCCCAGATACCCACCTTAGAGCCCTCTCCAGCCTTGGAGTCCAGCCCTCCAGTCTCCACAGCCACA
AGCATGGACCCACTGTCCACTGAGGACTTCAAGCCACCCAGAAGCCAGAGCCCAACCTAACCCCTCCAC
CCACCCATACCCACACTCAGCCTCTGACCTTACTGTGTCCCTGACCCCTCTTTCCCCACAGCCCA
CCCCTTGGATCATCTCCCTTACCCCTCACCTAGGGCCAACTCCTGGTCAGAGCCAGGCCCCAT
GGTCCATGTGTGGCCCAACACCACCTGTAAGGGTCATGGCTTGTGAGCCACCTGCCCTGGTGGAGCTGG
TGGCTGCTGTGAGGGATGTGGGTGGTCACTGCAGAGACTGACCCAGGTCGTGGAACAGGAGCGGCAGGA
GCGCCAAGCCCTGCTGCTGGGGTGCAGCAGTGGTGAAGCTGCCCGGGTCTGGGGCAGCTGGGTGAG
GCTGTGAAGAGACTGGCAGAGATGGCTGGACCACCAGCATGCCTGCACCAACCACCACTACCCAGAGG
AAGAAGAAAGACCCCTGAGGGGAGACGTG

ACGCGTACGCGGCCGCTCGAG - GFP Tag - GTTTAA

Protein Sequence: >RG226898 representing NM_001144950
 Red=Cloning site Green=Tags(s)

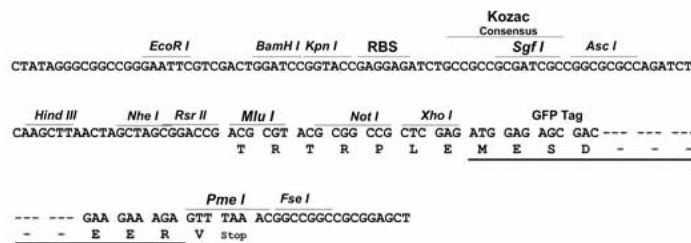
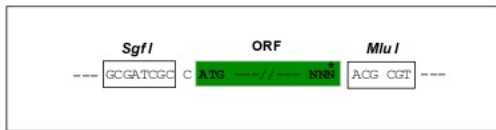
MRVLACLLAALVGIQAVERLRLADGPHGCAGRLEVWHGGRWGTVCDDGWDLRDAAVACRQLGCGGALAAP
 GGAFEGEGAGPVWLSELACRGNELGLCHHRGWKAHICSHEDAGVVCAGQVRANSRDDSTSPLDGAPW
 PGLLLELSPSTEEPLVTHAPRAGNPQNASRKKSPRPKQAKSTRAPLLTTGAPRQERLRLVSGPHRCAGR
 LEVWHGGRWGTVCDDGWDLRDAAVACRELGCGGALAAPGGARFGPGAGPVMMDDVCGCGGGEQALRDCPRS
 PWGRSNCDSHSEDAGLVCTGPAPRLRLADGPHGCAGRLEVWHGGRWGSVCDDAWDLRDAAVACRELGCGGA
 LAAPGGAFFGEGSGPIILDDLRCRGNELALRFPCARPWGQHDCHHREDAGAVCDGMPLGYVPTAPTDSN
 NSTPREAASRPPSTMTSQAPGTAGVSPPPASPTVLWEPGPEAGSPQLRLVAGPSKCSGRLEVWHQDQRWGT
 VCDDSWMDRSAYVCRELGCGGPQQPDAAGRFGWGAGPIWLDVVCVGTASLSDCPAAPWGKHCAHN
 EDVGTCTGPPGLDSISDPFSWSWIPGLGRDRDAWLPGELATKPSASVTASVLEKTTTKAPGKMPKSTKK
 WVTKNAKRPTTQPPVMTTKHSRAQSPDLTSQTAAALTEASRRPTSEFTRRPTTEAPQRWTSHTATL
 TPQAPRERTTKMAMLTQGPQEMTSESTIKSIPQASLEPSAEIPEGSPKDPAPSPSVSTTGESGLF
 RVRLADGPNRCAGRLEVWHAGRWGTVCDDNWDLRDATVACWELGCGKVRPRVGKTHYGPGTPIWLDLDMG
 CKGSEASLSDCPGAWGKHNCDEEDVGLTCTGYTDYDDYPPWTWDPTSREDLAKGTTTAGVPGHTLPWR
 TTRRPGSSSPAIRRLPDTGSKDGYKLPTWDTPSGRGLAEGTPTAGKLGPTLGAGTTRSPGSPPTLRVHG
 DTGSPRPWPERRPPRAARTAPTPSPGPSASPGPPALTSDSRELTPHSALTSEATSDADPTSPP
 TPDASRTNPDILTSDFALSTPDSSVVPALTEPSPPTLPLPKELTSDPSTPSEVTSLSPTSEQVPE
 SDTTPDLDTTPYSSTVSEYSRSDPSPSPHPTTTTPDPTMAPDPITLNPVTVPHPPTTTPHPTTI
 THSTMIPDPTTTPQFPTTIHSTMIPDPTTTPQFPTTMQPTTTPHSTTPHPTTTPHPTTIHSTMIPDPT
 TTPQFPTTMQPTTTPHPTTTPHPTTTPHPTTTPHPTTTPHPTTTPHPTTTPHPTTTPHPTTTPDPT
 SSTPVIITVSLPTSLGTELSSPTLAPTVPKPSLHPQLTFTAPAPHTSTSQIPTLEPSALESRSSTAT
 SMDPLSTEDFKPPRSQSPNLTPPTHTPHASDLTVSPDPLLSPAHPLDHPPLDPLTLGPTPGQSPGPH
 GPCVAPTPPVRVMACEPPALVELVAAVRDVGGQLQRLTQVVEQERQERQALLLGLTQLVEAARGLGQLGE
 AVKRLAEMAWTTSMPAPTTTTPEEEERPLRGDV

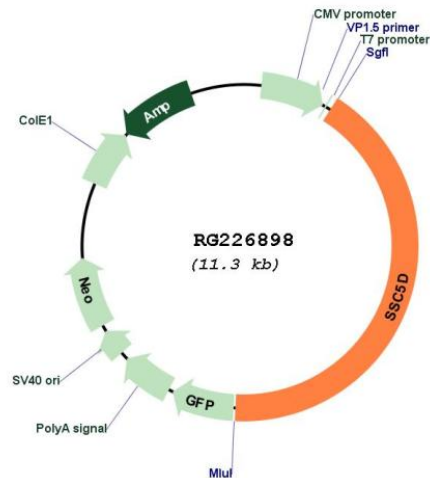
TRTRPLE - GFP Tag - V

Restriction Sites: SgfI-MluI

Cloning Scheme:

Cloning sites used for ORF Shutting:



Plasmid Map:


ACCN: NM_001144950

ORF Size: 4719 bp

OTI Disclaimer: The molecular sequence of this clone aligns with the gene accession number as a point of reference only. However, individual transcript sequences of the same gene can differ through naturally occurring variations (e.g. polymorphisms), each with its own valid existence. This clone is substantially in agreement with the reference, but a complete review of all prevailing variants is recommended prior to use. [More info](#)

OTI Annotation: This clone was engineered to express the complete ORF with an expression tag. Expression varies depending on the nature of the gene.

Components: The ORF clone is ion-exchange column purified and shipped in a 2D barcoded Matrix tube containing 10µg of transfection-ready, dried plasmid DNA (reconstitute with 100 µl of water).

Reconstitution Method:

1. Centrifuge at 5,000xg for 5min.
2. Carefully open the tube and add 100ul of sterile water to dissolve the DNA.
3. Close the tube and incubate for 10 minutes at room temperature.
4. Briefly vortex the tube and then do a quick spin (less than 5000xg) to concentrate the liquid at the bottom.
5. Store the suspended plasmid at -20°C. The DNA is stable for at least one year from date of shipping when stored at -20°C.

RefSeq: [NM_001144950.2](#)

RefSeq Size: 4910 bp

RefSeq ORF: 4722 bp

Locus ID: 284297

UniProt ID: [A1L4H1](#)

Cytogenetics: 19q13.42

Gene Summary: Binds to extracellular matrix proteins. Binds to pathogen-associated molecular patterns (PAMPs) present on the cell walls of Gram-positive and Gram-negative bacteria and fungi, behaving as a pattern recognition receptor (PRR). Induces bacterial and fungal aggregation and subsequent inhibition of PAMP-induced cytokine release. Does not possess intrinsic bactericidal activity. May play a role in the innate defense and homeostasis of certain epithelial surfaces (By similarity).[UniProtKB/Swiss-Prot Function]