

Product datasheet for **RG226885**

RAB1A (NM_015543) Human Tagged ORF Clone

Product data:

Product Type: Expression Plasmids
Product Name: RAB1A (NM_015543) Human Tagged ORF Clone
Tag: TurboGFP
Symbol: RAB1A
Synonyms: RAB1; YPT1
Mammalian Cell Selection: Neomycin
Vector: pCMV6-AC-GFP (PS100010)
E. coli Selection: Ampicillin (100 ug/mL)
ORF Nucleotide Sequence: >RG226885 representing NM_015543
Red=Cloning site **Blue**=ORF **Green**=Tags(s)

TTTTGTAATACGACTCACTATAGGGCGGCCGGAATTCGTCGACTGGATCCGGTACCGAGGAGATCTGCC
GCC**CGATCGCC**

ATGTCCAGCATGAATCCCGAATATGATTATTTATTCAAGTTACTTCTGATTGGCGACTCAGGGTTGGAA
AGTCTTGCCTTCTTCTTAGGTTTGCAGATGATACATACAGAAAGCTACATCAGCACAATTGGTGTGGA
TTTCAAATAAGAAGCTATAGAGTTAGACGGGAAAACAATCAAGCTTCAAATAGAATTTGCTGATCCCTT
GGAATTCGGTTTTTGGAAACAGTGCTAAGAATGCAACGAATGTAGAACAGTCTTTCATGACGATGGCAG
CTGAGATTAATAAAGCGAATGGGTCCCGGAGCAACAGCTGGTGGTCTGAGAAGTCCAATGTTAAATTC
GAGCACTCCAGTCAAGCAGTCAGGTGGAGTTGCTGC

ACGCGTACGCGGCCGCTCGAG - GFP Tag - GTTTAA

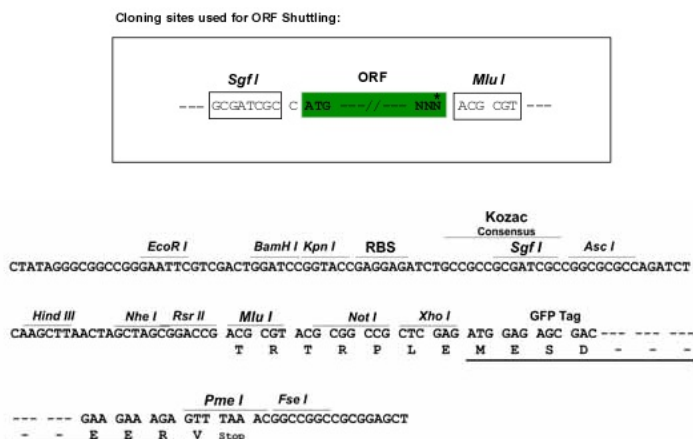
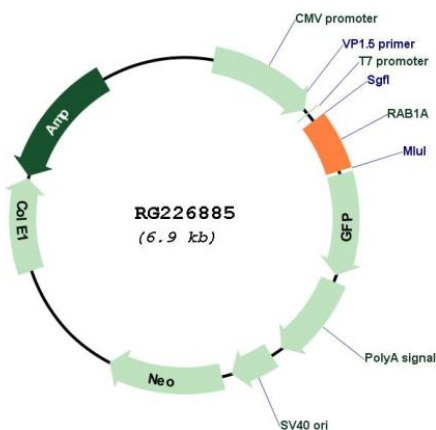
Protein Sequence: >RG226885 representing NM_015543
Red=Cloning site **Green**=Tags(s)
MSSMNPEYDYLFKLLLIIGDSGVGKSCLLLRFADDTYTESYISTIGVDFKIRTIELDGKTIKLQIEFADSL
GIPFLETSAKNATNVEQSFMTMAAEIKKRMGPATAGGAEKSNVKIQSTPVKQSGGGCC

TRTRPLE - GFP Tag - V

Restriction Sites: Sgfl-Mlul



[View online »](#)

Cloning Scheme:

Plasmid Map:


ACCN: NM_015543

ORF Size: 387 bp

OTI Disclaimer: The molecular sequence of this clone aligns with the gene accession number as a point of reference only. However, individual transcript sequences of the same gene can differ through naturally occurring variations (e.g. polymorphisms), each with its own valid existence. This clone is substantially in agreement with the reference, but a complete review of all prevailing variants is recommended prior to use. [More info](#)

OTI Annotation:	This clone was engineered to express the complete ORF with an expression tag. Expression varies depending on the nature of the gene.
Components:	The ORF clone is ion-exchange column purified and shipped in a 2D barcoded Matrix tube containing 10ug of transfection-ready, dried plasmid DNA (reconstitute with 100 ul of water).
Reconstitution Method:	<ol style="list-style-type: none">1. Centrifuge at 5,000xg for 5min.2. Carefully open the tube and add 100ul of sterile water to dissolve the DNA.3. Close the tube and incubate for 10 minutes at room temperature.4. Briefly vortex the tube and then do a quick spin (less than 5000xg) to concentrate the liquid at the bottom.5. Store the suspended plasmid at -20°C. The DNA is stable for at least one year from date of shipping when stored at -20°C.
RefSeq:	NM_015543.1 , NP_056358.1
RefSeq Size:	2420 bp
RefSeq ORF:	390 bp
Locus ID:	5861
UniProt ID:	P62820
Cytogenetics:	2p14
Protein Families:	Druggable Genome
Gene Summary:	This gene encodes a member of the Ras superfamily of GTPases. Members of the gene family cycle between inactive GDP-bound and active GTP-bound forms. This small GTPase controls vesicle traffic from the endoplasmic reticulum to the Golgi apparatus. Multiple alternatively spliced transcript variants have been identified for this gene which encode different protein isoforms. [provided by RefSeq, Oct 2008]