

## Product datasheet for **RG226855**

### RCOR3 (NM\_001136225) Human Tagged ORF Clone

#### Product data:

Product Type:	Expression Plasmids
Product Name:	RCOR3 (NM_001136225) Human Tagged ORF Clone
Tag:	TurboGFP
Symbol:	RCOR3
Mammalian Cell Selection:	Neomycin
Vector:	pCMV6-AC-GFP (PS100010)
E. coli Selection:	Ampicillin (100 ug/mL)
ORF Nucleotide Sequence:	>RG226855 representing NM_001136225 Red=Cloning site Blue=ORF Green=Tags(s)

TTTTGTAATACGACTCACTATAGGGCGGCCGGAATTCGTCGACTGGATCCGGTACCGAGGAGATCTGCC  
GCC**CGATCGCC**

ATGCCCGGCATGATGGAGAAAGGGCCCGAGTTACTGGGAAGAACCGATCGGCCAACGGCAGCGCCAAGA  
GCCCGGCAGGCGCGCGGCAGCGGCGCCTCGTCCACCAACGGCGGGCTGCACTACTCAGAGCCCGAGAG  
CGGCTGCAGCAGCGACGACGAGCAGCATGTTGGGATGAGAGTCCGAGCCGAATACCAAGCTCGGATCCCT  
GAATTTGATCCAGGTGTACAAAGTACACAGATAAAGACAATGGAGGGATGCTTGTATGGTCTCCATATC  
ACAGTATCCCAGATGCCAAATTGGATGAATACATTGCAATTGCAAAGGAAAAGCATGGCTACAATGTGGA  
ACAGGCACCTGGCATGTTGTTCTGGCATAAACATAACATTGAGAAGTCCCTTGCTGATCTCCCTAATTTTC  
ACTCCCTTTCCGGATGAGTGGACAGTGGAAAGATAAAGTCTATTTGAACAAGCCTTTAGTTTTTCATGGAA  
AGAGCTTTCACAGGATTCAGCAAATGCTTCCAGATAAGACAATTGCAAGCCTTGTAAAATTTACTATTC  
TTGGAAAAAACTCGCTCTAGGACAAGTTTGTGGATCGCCAGGCTCGTAACTAGCTAATAGACATAAT  
CAGGGTGACAGTGTATGATGTAGAAGAAACACATCCAATGGATGGGAATGATAGTGATTATGATCCCA  
AAAAAGAAGCCAAAAAGAGGGTAATACTGAACAACCTGTCCAACTAGCAAGATTGGACTTGAAGAAG  
AGAGTATCAGAGTTTACAACATCGCCATCATTCTCAGCGTTCTAAGTGCCGTCCACCTAAGGCATGTAT  
TTAACCCAGGAAGATGTGGTAGCAGTTTCTGTAGTCCCAATGCAGCCAACACCATCCTGAGGCAACTGG  
ACATGGAGTTGATCTCTCTAAAACGTCAAGTTCAGAAATGCTAAGCAAGTAAACAGTGCACCTAAACAGAA  
AATGGAAGGTGGAATTGAAGAATTCAAACCTCCTGAGTCAAATCAGAAAATTAATGCCCGTTGGACCACA  
GAGGAGCAGCTTCTAGCAGTGAAGGTGTCCGCAAAATATGGTAAAGATTTTCAAGCTATTGCAGATGTAA  
TTGGCAACAAGACTGTTGGCCAAGTGAAGAACTCTTTGTAAACTACAGGCGTCGGTTTAACTTAGAGGA  
GGTATTGCAGGAGTGGGAAGCAGAACAAGGAACCCAGGCTTCTAATGGTGTGCTTCTACTTTAGGGGAG  
GAGACAAAAGTGCTTCTAATGTGCCATCAGGGAAGAGCACTGATGAAGAAGAGGAGGTGTGTTGTGTA  
TGAATTTGAGCTAATA

ACGCGTACGCGGCCGCTCGAG - GFP Tag - GTTTAA



[View online »](#)

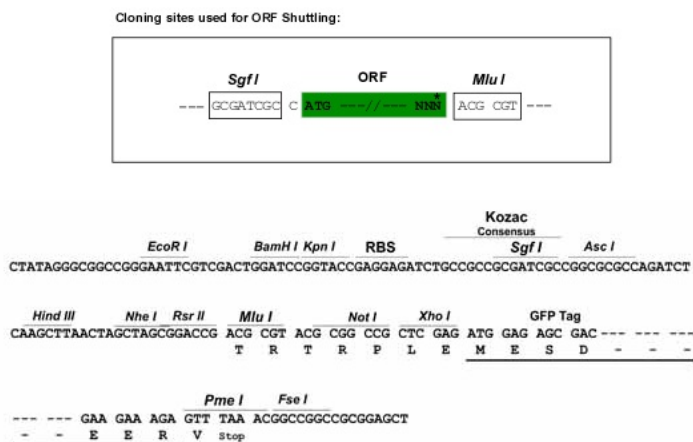
**Protein Sequence:** >RG226855 representing NM\_001136225  
Red=Cloning site Green=Tags(s)

MPGMMEKGPELLGKNRSANGSAKSPAGGGGSGASSTNGGLHYSEPESGCSDDEHDVGMRVGAEQARIP  
 EFDPGATKYTDKDNNGMLVWSPYHSIPDAKLDEYIAIAKEKHGYNVEQALGMLFWHKHNIKSLADLPNF  
 TPFPEWTVEDKVLFEQAFSFHGKSFHRIQQMLPDKTIASLVKYYYSWKKTRSRSLMDRQARKLANRHN  
 QGDSDDDVEETHPMDGNDSDYDPKKEAKKEGNTEQPVQTSKIGLRREYQSLQHRHHSQRSKCRPPKGM  
 LTQEDVVAVSCLPNAANTILRQLDMELISLKRQVQNAKQVNSALKQKMEGGIEEFKPPESNQKINARWTT  
 EEQLLAVQGVRYGKDFQAIADYIGNKTVGVKNFFVNYRRRFLNLEEVLQEWAEQGTQASNGDASTLGE  
 ETKSASNVPSTDEEEVCLCMFELI

TRTRPLE – GFP Tag – V

**Restriction Sites:** SgfI-MluI

**Cloning Scheme:**



**ACCN:** NM\_001136225

**ORF Size:** 1347 bp

**OTI Disclaimer:** The molecular sequence of this clone aligns with the gene accession number as a point of reference only. However, individual transcript sequences of the same gene can differ through naturally occurring variations (e.g. polymorphisms), each with its own valid existence. This clone is substantially in agreement with the reference, but a complete review of all prevailing variants is recommended prior to use. [More info](#)

**OTI Annotation:** This clone was engineered to express the complete ORF with an expression tag. Expression varies depending on the nature of the gene.

**Components:** The ORF clone is ion-exchange column purified and shipped in a 2D barcoded Matrix tube containing 10ug of transfection-ready, dried plasmid DNA (reconstitute with 100 ul of water).

**Reconstitution Method:**

1. Centrifuge at 5,000xg for 5min.
2. Carefully open the tube and add 100ul of sterile water to dissolve the DNA.
3. Close the tube and incubate for 10 minutes at room temperature.
4. Briefly vortex the tube and then do a quick spin (less than 5000xg) to concentrate the liquid at the bottom.
5. Store the suspended plasmid at -20°C. The DNA is stable for at least one year from date of shipping when stored at -20°C.

**RefSeq:** [NM\\_001136225.2](#)

**RefSeq Size:** 1873 bp

**RefSeq ORF:** 1350 bp

**Locus ID:** 55758

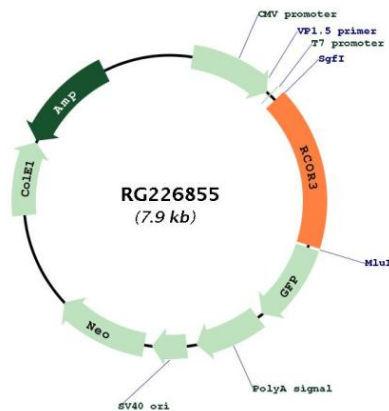
**UniProt ID:** [Q9P2K3](#)

**Cytogenetics:** 1q32.2-q32.3

**Protein Families:** Transcription Factors

**Gene Summary:** May act as a component of a corepressor complex that represses transcription. [UniProtKB/Swiss-Prot Function]

**Product images:**



Circular map for RG226855