

Product datasheet for **RG226853**

TMEM205 (NM_001145416) Human Tagged ORF Clone

Product data:

Product Type: Expression Plasmids
Product Name: TMEM205 (NM_001145416) Human Tagged ORF Clone
Tag: TurboGFP
Symbol: TMEM205
Synonyms: UNQ501
Mammalian Cell Selection: Neomycin
Vector: pCMV6-AC-GFP (PS100010)
E. coli Selection: Ampicillin (100 ug/mL)
ORF Nucleotide Sequence: >RG226853 representing NM_001145416
 Red=Cloning site Blue=ORF Green=Tags(s)

TTTTGTAATACGACTCACTATAGGGCGGCCGGAATTCGTCGACTGGATCCGGTACCGAGGAGATCTGCC
GCC**CGATCGCC**

ATGGAGGAAGGCGGGAACCTAGGAGGCCTGATTAAGATGGTCCATCTACTGGTCTTGTCAGGTGCCTGGG
GCATGCAAATGTGGGTGACCTTCGTCCTCAGGCTTCCTGCTTTCCGAAGCCTTCCCCGACATACCTTCGG
ACTAGTGCAGAGCAAACCTTCCCCTTCTACTTCCACATCTCCATGGGCTGTGCCTTCATCAACCTCTGC
ATCTTGGCTTACAGCATGCTTGGGCTCAGCTCACATTCTGGGAGCCAGCCAGCTTTACCTGCTGTTC
TGAGCCTTACGCTGGCCACTGTCAACGCCCGCTGGCTGGAACCCCGCACACAGCTGCCATGTGGGCCCT
GCAAACCGTGGAGAAGGAGCGAGGCCTGGGTGGGAGGTACCAGGCAGCCACCAGGGTCCCAGTCCCTAC
CGCCAGCTGCGAGAGAAGGACCCCAAGTACAGTGTCTCCGCCAGAAATTTCTTCCGCTACCATGGGCTGT
CCTCTCTTTGCAATCTGGGCTGCGTCTGAGCAATGGGCTCTGTCTCGTGGCCTTGCCTGGAAATAAG
GAGCCTC

ACGCGTACGCGGCCGCTCGAG - GFP Tag - GTTTAA

Protein Sequence: >RG226853 representing NM_001145416
 Red=Cloning site Green=Tags(s)

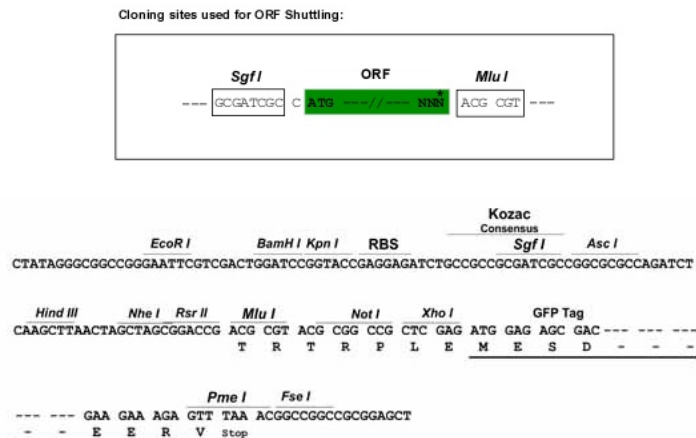
MEEGGLGGLIKMVHLLVLSGAWGMQMWVTFVSGFLLFRSLPRHTFGLVQSKLFPFYFHISMGCAFINLC
ILASQHAWAQLTFWEASQLYLLFLSLTLATVNARWLEPRTTAAMWALQTVEKERGLGGEVPGSHQGPDPY
RQLREKDPKYSALRQNF FRYHGLSSLCNLGCVLSNGLCLAGLALAIRSL

TRTRPLE - GFP Tag - V

Restriction Sites: Sgfl-MluI



[View online »](#)

Cloning Scheme:


ACCN: NM_001145416

ORF Size: 567 bp

OTI Disclaimer: The molecular sequence of this clone aligns with the gene accession number as a point of reference only. However, individual transcript sequences of the same gene can differ through naturally occurring variations (e.g. polymorphisms), each with its own valid existence. This clone is substantially in agreement with the reference, but a complete review of all prevailing variants is recommended prior to use. [More info](#)

OTI Annotation: This clone was engineered to express the complete ORF with an expression tag. Expression varies depending on the nature of the gene.

Components: The ORF clone is ion-exchange column purified and shipped in a 2D barcoded Matrix tube containing 10ug of transfection-ready, dried plasmid DNA (reconstitute with 100 ul of water).

Reconstitution Method:

1. Centrifuge at 5,000xg for 5min.
2. Carefully open the tube and add 100ul of sterile water to dissolve the DNA.
3. Close the tube and incubate for 10 minutes at room temperature.
4. Briefly vortex the tube and then do a quick spin (less than 5000xg) to concentrate the liquid at the bottom.
5. Store the suspended plasmid at -20°C. The DNA is stable for at least one year from date of shipping when stored at -20°C.

RefSeq: [NM_001145416.2](#)

RefSeq Size: 813 bp

RefSeq ORF: 570 bp

Locus ID: 374882

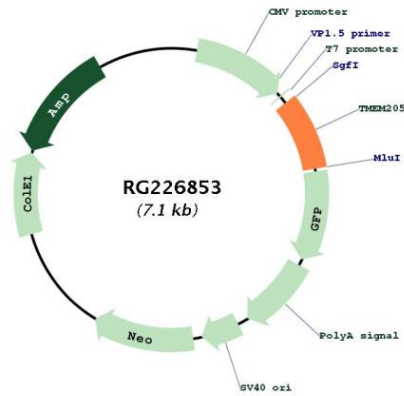
UniProt ID: [Q6UW68](#)

Cytogenetics: 19p13.2

Protein Families: Transmembrane

Gene Summary: In cancer cells, plays a role in resistance to the chemotherapeutic agent cisplatin.
[UniProtKB/Swiss-Prot Function]

Product images:



Circular map for RG226853