

Product datasheet for **RG226827**

PCDH15 (NM_001142768) Human Tagged ORF Clone

Product data:

Product Type:	Expression Plasmids
Product Name:	PCDH15 (NM_001142768) Human Tagged ORF Clone
Tag:	TurboGFP
Symbol:	PCDH15
Synonyms:	CDHR15; DFNB23; USH1F
Mammalian Cell Selection:	Neomycin
Vector:	pCMV6-AC-GFP (PS100010)
E. coli Selection:	Ampicillin (100 ug/mL)
ORF Nucleotide Sequence:	>RG226827 representing NM_001142768 Red=Cloning site Blue=ORF Green=Tags(s)

TTTTGTAATACGACTCACTATAGGGCGGCCGGAATTCGTCGACTGGATCCGGTACCGAGGAGATCTGCC
GCC**CGATCGCC**

ATGTTTCGACAGTTTTATCTCTGGACATGTTTAGCTTCAGGGATCATCCTGGGCTCTCTTTGAAATCT
GCTTGGGCCAGTATGATGATGGTACAATTCTGGTGGACAACATGCTGATCAAAGGGACTGCTGGAGGACC
AGACCCACCATAGAACTTTCTTAAAGGATAATGTGGATTACTGGGTGTTGATGGATCCTGTTAAGCAA
ATGCTTTTCTGAACAGCACCGGAAGAGTTCTGGATAGAGATCCACCGATGAACATACACTCCATTGTGG
TGCAGGTCAGTGCATCAACAAAAAGTGGGCACTATTATCTACCATGAAGTGGCAATAGTGGTGGAGAGA
CAGGAATGACAACCTACCCACTTTCAAGCATGAAAGCTACTATGCCACAGTGAATGAGCTACTCCAGTT
GGTACCACAATATTCACAGGATTTTCAGGAGACAATGGAGCTACAGATATAGATGATGGACCAATGGAC
AGATAGAGTATGTTATTCAGTATAATCCAGATGATCCGACATCCAATGACACCTTTGAAATCCCCTAAT
GTTGACTGGAAATATAGTGTTAAGGAAGAGGCTCAACTATGAAGATAAGACTCGCTACTTTGTCATAATC
CAAGCTAATGACCGTGCCAAAATCTGAATGAGAGGCGAACCACCACCACCCTCACAGTGGATGTTCC
TGGATGGAGATGACTTGGGTCCAATGTTTCTTCTTGTGTCTTGTGCCAAACACTCGTGATTGCCGTCC
ACTCACTTATCAAGCTGCCATACCTGAGTTGAGAACTCCGGAAGAAGTGAACCCATTATTGTTACGCCA
CCAATCCAAGCCATTGATCAGGACCGGAATATTCACCCGATCAGATAGGCCAGGAATCCTCTATTCCA
TCCTTGTGGGACTCCTGAGGATTACCCAGATTTTCCATATGCATCCTAGGACAGCAGAAGTATTAGTCT
CCTGGAGCCAGTAAACAGAGACTTTACCAAGAAATTTGATTTGGTTATTAAAGGCTGAACAAGACAATGGT
CATCCTCTTCTGCCTTTGCCGGTCTACACATTGAAATACTGGATGAAAACAATCAAAGTCCATATTTTA
CAATGCCAGTTATCAAGGCTATATCCTGGAATCTGCCCCAGTGGGAGCAACCAATTCGGACAGTCTCAA
TTTGACTTCACTTTAAGAATAGTAGCTCTGGACAAGGACATAGAAGATACAAAAGCCAGAGCTTCACT
CTTTTTCTGAATGACTACACCTCAGTCTTACCCTCACACAGACTGGTATTACTCGTACCTCACCTTAC
TTCAACCAGTGGACAGGGAAGAACGCAAACTTACACCTTTTCGATAACAGCATTGATGGTGTACAAGA
AAGTGAGCCAGTCATCGTCAATATCAAGTGATGGATGCAATGATAACAGCCAACTTCCCTGAAATA



View online »

TCCTATGATGTGTATGTTTATACAGACATGAGACCTGGGGACAGTGCATACAGCTCACTGCAGTCGACG
 CAGACGAAGGGTCAAATGGGGAGATCACATATGAAATCCTTGTGGGGCTCAGGGAGACTTCATCATCAA
 TAAACAACAGGGCTTATCACCATCGCTCCAGGGTGGAAATGATAGTCGGGCGGACTTACGCACTCAGC
 GTCCAAGCAGCGGATAATGCTCCTCCTGCAGAGCGAAGGAACTCCATCTGCACTGTGTATATTGAAGTGC
 TTCCACCAAATAATCAAAGCCCTCCTCGCTTCCACAGCTGATGTATAGCCTTGAATTAGTGAAGCCAT
 GAGGGTTGGTGTGTTTTATTAATCTACAGGCAACTGATCGAGAGGGAGACTCAATAACATATGCCATT
 GAGAATGGAGATCCTCAGAGAGTTTTTAATCTTTCAGAAACCAGGGGATTCTAACCTTAGGGAAGCAC
 TGGACAGGGAAAGCACTGATCGCTACATTCTGATCATCACAGCTTCAGATGGCAGGCCAGATGGGACCTC
 AACTGCCACAGTAAACATAGTGGTGACAGATGTCAATGACAATGCTCCAGTGTGGATCCTTATCTGCCA
 AGAAATTTATCTGTGGTGAAGAAGAAGCCAATGCCTTTGTGGGTCAAGTAAAAGCAACAGACCCTGATG
 CTGGAATAAATGGTCAAGTGCACACTACAGTTTGGGTAACCTTAAATAATCTTTTTCGTATCACATCCAATGG
 GAGCATTTACACAGCAGTGAAGCTAACAGAGAAGTCAAGGACTACTATGAACTTGTGTGTGGCAACA
 GATGGAGCAGTACACCCTCGTCATTCAACTCTAACCTTGCCATCAAGGTTTTGGACATTGATGATAACA
 GTCCTGTGTTACCAATCAACATACACTGTCCTTGTGGAAGAGAATTTGCCAGCTGGGACTACCATCCT
 TCAAATAGAGGCCAAAGATGTCGACCTTGAGCAAAATGTGCTTACCGGATAAGAAGCCAGAAGTGAAG
 CACTTTTTTGCACTACATCCATTTACAGGAGAACTATCGTTTTAAGGAGTTTAGATTATGAGGCATTTTC
 CAGACCAAGAAGCAAGTATCACTTTTTCTGGTAGAGGCCTTTGATATTTATGGAACAATGCCACCTGGTAT
 TGCTACTGTACAGTGATTGTAAGGATATGAATGATTATCCTCCTGTCTTTAGTAAACGAATATACAAA
 GGGATGGTGGCTCCGGATGCAGTCAAGGGTACACCTATCACAAAGTTTATGCTGAAGATGCAGACCCTC
 CTGGATTACCTGCAAGTCGTGTGAGGTATAGAGTAGATGATGTACAGTTTCTTACCCTGCCAGTATTTT
 TGAAGTGAAGAAGATTCTGGAAGAGTAATAACACGAGTCAATCTTAATGAAGAACCTACAACAATTTTT
 AAGTTGGTGGTGGTTGCTTTTGATGATGGGGAGCCTGTGATGTCCAGCAGTGCACAGTGAAGATTCTTG
 TCTTACATCCTGGTGTGAGATCCCAGCTTACACAGGAGGAATATAGACCTCCTCCAGTGAAGTGAAGTGC
 CACCAAAGGGACCATGGTTGGTGTAAATTTCTGCTGCTGCCAATTAATCAAAGTATTGTGTACTCCATTGTT
 TCAGGAAATGAAGAAGATACATTTGGAATTAATAACATCACAGGTGTATCTATGTGAATGGACCTCTGG
 ATTATGAGACCAGGACAAGCTATGTACTTCGAGTCCAAGCTGATTCCTGGAAAGTGGTCTTGCCAACTCT
 CCGAGTTCCTTCAAAAAGCAATACAGCTAAAGTATACATTGAGATTAGGATGAAAATAATCATCCCCCA
 GTGTTTCAGAAAAAATCTACATCGGAGGTGTATCTGAAGATGCAAGAATGTTTACTTCTGTACTCAGAG
 TGAAGGCTACTGATAAAGATACTGGCAATTATAGTGTATGGCCTACAGACTCATAATACCACCAATTA
 AGAGGGAAAAGAAGGATTTGTAGTGAAACATATACAGGGCTTACAAAAGTCTATGCTCTTCCATAAT
 ATGAGGAGATCCTACTTCAAGTTTCAAGTTATTGCAACTGACACTATGGGAAGGGACTGAGCGGCAAG
 CCGATGTACTCGTCTCCGTGGTCAATCAGCTGGATATGCAAGTATTGTTTCCAATGTGCCTCCTACTCT
 AGTGGAAAAAAGATAGAAGATCTTACAGAGATCTTGGATCGCTATGTTTCAGGAACAAATTCCTGGTGC
 AAGGTCGTAGTGGAGTCCATTGGAGCTCGCCGGCATGGAGATGCCTTTTCCCTAGAAGATTACACCAAAT
 GTGACTTGACTGTCTATGCAATTGACCCCCAAACCAACAGAGCCATCGATAGAAATGAGCTTTTTAAATT
 TTTGGATGGCAAACACTTGTATCAATAAAGACTTTTACGCCGATTATGGGGAAGGAGGACGCATTCTG
 GAGATCCGGACTCCAGAGGCAGTGACCAGCATAAAAAGAGAGGAGAAAGTCTAGGATACACAGAAGGGG
 CCTTGTGGCTCTGGCCTTATCATCATCCTCTGCTGCATTCTGCCATCTTGGTGGTTTTGGTCAAGTCA
 CAGACAGTTTAAAGTACGTCAAGCTGAGTGTACAAAGACTGCACGAATTCAGGCCCATTACCCGGCTT
 AAACCAGCAGTGCCGGCTCCTGCACCAGTGGCAGCGCCCCGCCGCCGCCGCCCTCCGCCAGTGGCGC
 ATCTCTATGAAGAACTTGGAGACAGCTCAATGCATAATCTTTTCTTCTTACCATTTTCAACAAAGCAG
 GGGAAATAACTCAGTCTCAGAAGACAGGAAACATCAACAAGTTGTGATGCCCTTTTCTTCCAATACTATT
 GAGGCTCACAAAGTCAAGTCAAGTCAAGTCAAGTCAAGTCAAGTCAAGTCAAGTCAAGTCAAGTCAAGT
 CATTCTATCTGATGAGGATGACTTAAGTGCCATAATCCCTTTATAAGGAAAACATAAGTCAAGTATC
 AACAAATTCAGACATTTACAGAGAACAGATTTGTAGACCCATTTTACCCAAAATAACAAGCCAAGAGT
 AAGTCTCTGAGGGGCCAAGAGAAAAGATTAGAGGCTGTGGAGTCAAGTCAAGTCAAGTCAAGTCAAGT
 TGATGAGGAAAGTTCAAATAGACCAGAGATCATAGATCTGCAGCAGTGGCAAGGCACCAGCAGAAAGC
 TGAATAATGAAAACACTGGAATCTGTACAAACAAAAGAGGTAGCAGCAATCCATTGCTTACAACCTGAAG
 GCAAAATTTGACAGAGAAAAGGAAATAAGGCAAGGTGAAACACTGATGATAGAAGGAACAGAACAGTTGA
 AATCTCTCTTTCAGACTCTTCAATTTTGTCTTCCAGGCCTCACTTCTCATTCTCCTTGGCAACTGT
 TTCAAGAAGTGTGGAACCTCAATCAGAACCTAATGTATCAGTCTCCTGCTGAGTGTTCCTTGGAACTT
 TCTCCTCAAGGCCTTGTGTTTTACATTTCTCACTCTCTAGGAGAGAGACACCTATTTGTATGTTACCTA

TTGAAACCGAAAGAAATATTTTTGAAAATTTTGGCCATCCACCAACATCTCTCCTTCTGCCTGTCCCCT
 TCCCCCTCCTCCTATTTCTCCTCCTTCTCCTCCTGCTCCTCTTCTCCTCCTCCTGAC
 ATTTCTCCTTTTTCTTTTTTGTCTCCTCCCTCCTCCTTCTATCCCTCTTCTCCTCCTCCTA
 CATTTTTTCCACTTTCGGTTTCAACGTCTGGTCCCCAACACCACCTCTTCTACCTCCATTTCCAACCTC
 TCTTCTCCACCCTCCTTCTATTCTTGGCCCTCCACCTCCTCAGTTCATTTCTGTCCACAGAGTGT
 GTCTGTATAACAGGTGTTAAATGCACGACCACTTGATGCCTGCCGAGAAAATTAAGTCTCTATGACAC
 AGCTATCAACAACGACAGTGTGTAACACGACCCCTCAGAGAGAACCAAAAGGCATCCTCAGACAGTTAA
 AAACCTTAGCAGAAGTTGAAAATCAGTAGCTAACATGTACAGTCAAATAGAAAAAACTATCTACGCACA
 AATGTTTCAGAAGTTCAACTATGTGCCCTTCAAGTAAACAAATATGAAATACATCTGAACAAAACA
 AGGGGAGTTTGAACAATATTGTCGAGGGAAGTAAAAACAATCTCACAGTCAATCTACTTCACTG

ACGCGTACGCGGCCGCTCGAG - GFP Tag - GTTTAA

Protein Sequence:

>RG226827 representing NM_001142768
 Red=Cloning site Green=Tags(s)

MFRQFYLWTLASGIIILGSLFEICLGQYDDGTLVDNMLIKGTAGGPDPTIELSLKDNVDYVWMLDPVKQ
 MLFLNSTGRVLD RPPMNIHSIVVQVQCINKKVGTTIYHEVRIVVRDRNDNSPTFKHESYATVNELTPV
 GTTIFTGFGSDNGATDIDDGPNQIEYVIQYNPDPTSNDFEIPMLTGNIVLRKRLNYEDKTRYFVII
 QANDRAQNLNERRTTTTLTVDVLGDGDLGPMFLPCVLPNTRDCRPLTYQAAIPELRTPEELNPIIVTP
 PIQAIDQDRNIQPPSDRPGILYSILVGTPEYPRFFHMHPRTAELSLLEPVNRDFHQKFDLVIAEKQDNG
 HPLPAFAGLHIEILDENNQSPYFTMPYQGYILESAPVGATISDSLNLTSPLRIVALDKDIEDTKDELH
 LFLNDYTSVFTVTQTGITRYLTLQLPVDREEQTYTFSITAFDGVQSEPVIVNIQVMDANDNTPTFPEI
 SYDVVYVYDMRPGDSVIQLTAVDADEGSNGEITYEILVGAQGDFIINKTTGLIT IAPGVEMIVGRTYALT
 VQAADNAPPAERRNSICTVYIEVLPNNQSPRFPQLMYSLEISEAMRVGAVLLNLQATDREGDSITYAI
 ENGDQQRVFNLSETTGILTLGKALDRESTDRYILIIITASDGRPDGTSTATVNIIVTVDNAPVDFPPLP
 RNL SVVEEENAFVGVKATDPDAGINGQVHYSLGNFNLFRIITSNQSIYAVKLNREVRDYELVVVAT
 DGAVHPRHSTLTLAIKVLDDIDNSPVFTNSTYTVLVEENLPAGTTILQIEAKDVLGANVSYRIRSPVVK
 HFFALHPFTGELSLRLSDYEAFPDQEAISITFLVEAFDIYGTMPPIATVTVIKDMNDYPPVFSKRIYK
 GMVAPDAVKGTPITTVYAEDADPPGLPASRVRYRVDVQFPYPASIFEVEEDSGRVITRVNLNEEPTTIF
 KLVVAFDDGEPVMSSSATVKILVLHPGEIPRFTQEEYRPPVSELATKGMTVGVISAAAINQSIYYSIV
 SGNEEDTFGINNITGVIYVNGPLDYETRTSYVLRVQADSLEVVLANLRVPSKSNKAKVYIEIQDENNHPP
 VFQKKFYIGGVSEDAARMFTSVLRVKATDKDTGNYSVMAYRLIIPPIKEGKEGFVETYTGLIKTAMLFHN
 MRRSYFKFQVIATDDYKGLSGKADVLVSVVNQLDMQVIVSNVPPTLVEKKIEDL TEILDYRVQEQIPGA
 KVVVESIGARRHGDAFSLDYTKCDLTVYAIDPQTNRAIDRNELFKFLDGKLLDINKDFQPPYEGGGRIL
 EIRTPAVTSIKKRGESLGYTEGALLALAFIIILCCIPAILVVLVSYRQFKVRQAECTKTARIQAALPAA
 KPAVPAPAPVAAPPPPPPPGHAHLYEELGDSSMHNLFLLYHFQQSRGNNSVSEDRKHQQVMPFSSNTI
 EAHKSAHVDGSLKSNLKSARKFTFLSDEDDL SAHNPL YKENISQVSTNSDISQRTDFVDPFSPKIQAKS
 KSLRGPREKIQRLWSQSVSLPRRLMRKVPNRPEIIDLQQWQGTQKAENENTGICTNKRGSNPLLTTEE
 ANL TEKEEIRQGETLMIEGTEQLKSLSSDSSFCFPRPHFSFSTLPTVSRTVELKSEPNVISSPAECSLEL
 SPSRPCVLHSSLRRETPICMPLIETERNIFENFAHPPNISPSACPLPPPPPI SPPSPPPAPAPLAPPPD
 ISPFSLFCPPSPSIPPLPPPTFFPLSVSTSGPPTPPLLPFPPTPLPPPPSIPCPPPSASFSTEC
 VCITGVKCTTNLMPAEIKSSMTQLSTTTVCKTDPQREP KILRHVKNLAELEKSVANMYSQIEKNYLR
 NVSELQTMCPSEVTNMEITSEQNKGSLNNIVEGTEKQSHSQSTSL

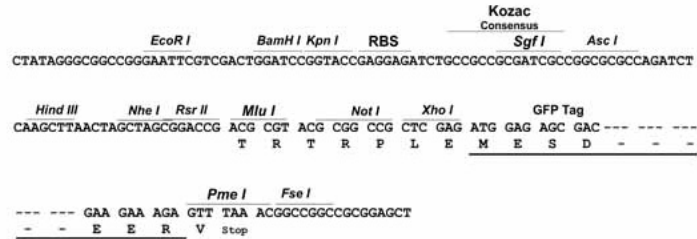
TRTRPLE - GFP Tag - V

Restriction Sites:

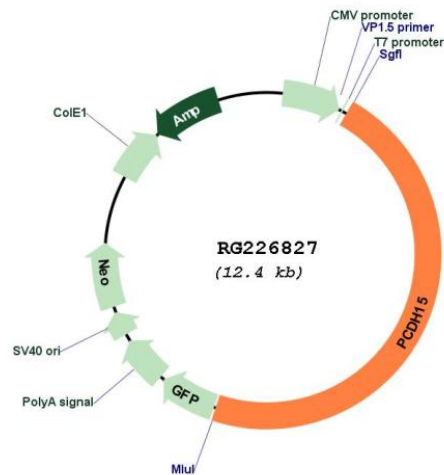
Sgfl-MluI

Cloning Scheme:

Cloning sites used for ORF Shutting:



Plasmid Map:



ACCN: NM_001142768

ORF Size: 5805 bp

OTI Disclaimer:	The molecular sequence of this clone aligns with the gene accession number as a point of reference only. However, individual transcript sequences of the same gene can differ through naturally occurring variations (e.g. polymorphisms), each with its own valid existence. This clone is substantially in agreement with the reference, but a complete review of all prevailing variants is recommended prior to use. More info
OTI Annotation:	This clone was engineered to express the complete ORF with an expression tag. Expression varies depending on the nature of the gene.
Components:	The ORF clone is ion-exchange column purified and shipped in a 2D barcoded Matrix tube containing 10ug of transfection-ready, dried plasmid DNA (reconstitute with 100 ul of water).
Reconstitution Method:	<ol style="list-style-type: none">1. Centrifuge at 5,000xg for 5min.2. Carefully open the tube and add 100ul of sterile water to dissolve the DNA.3. Close the tube and incubate for 10 minutes at room temperature.4. Briefly vortex the tube and then do a quick spin (less than 5000xg) to concentrate the liquid at the bottom.5. Store the suspended plasmid at -20°C. The DNA is stable for at least one year from date of shipping when stored at -20°C.
RefSeq:	NM_001142768.2
RefSeq Size:	6961 bp
RefSeq ORF:	5808 bp
Locus ID:	65217
Cytogenetics:	10q21.1
Protein Families:	Druggable Genome, Transmembrane
Gene Summary:	This gene is a member of the cadherin superfamily. Family members encode integral membrane proteins that mediate calcium-dependent cell-cell adhesion. It plays an essential role in maintenance of normal retinal and cochlear function. Mutations in this gene result in hearing loss and Usher Syndrome Type IF (USH1F). Extensive alternative splicing resulting in multiple isoforms has been observed in the mouse ortholog. Similar alternatively spliced transcripts are inferred to occur in human, and additional variants are likely to occur. [provided by RefSeq, Dec 2008]