

## Product datasheet for **RG226814**

### **NCR1 (NM\_001145458) Human Tagged ORF Clone**

#### Product data:

**Product Type:** Expression Plasmids  
**Product Name:** NCR1 (NM\_001145458) Human Tagged ORF Clone  
**Tag:** TurboGFP  
**Symbol:** NCR1  
**Synonyms:** CD335; LY94; NK-p46; NKP46  
**Mammalian Cell Selection:** Neomycin  
**Vector:** pCMV6-AC-GFP (PS100010)  
**E. coli Selection:** Ampicillin (100 ug/mL)  
**ORF Nucleotide Sequence:** >RG226814 representing NM\_001145458  
 Red=Cloning site Blue=ORF Green=Tags(s)

TTTTGTAATACGACTCACTATAGGGCGGCCGGAATTCGTCGACTGGATCCGGTACCGAGGAGATCTGCC  
 GCC**CGATCGCC**

ATGTCTTCCACACTCCCTGCCCTGCTCTGCGTCGGGCTGTGTCTGAGTCAGAGGATCAGCGCCCAGCAGC  
 AGACTCTCCAAAACCGTTCATCTGGGCCGAGCCCATTTTCATGGTTCCAAAGGAAAAGCAAGTGACCAT  
 CTGTTGCCAGGAAATTATGGGGCTGTTGAATACCAGCTGCACCTTGAAGGAAGCCTTTTGGCGTGGAC  
 AGACAAAACCCCTGAGCGGATTAACAAAGTCAAATTTACATCCCGGACATGAACTCCCGCATGGCAG  
 GGCAATACAGCTGCATCTATCGGGTTGGGGAGCTCTGGTCAGAGCCAGCAACTTCTGGATCTGGTGGT  
 AACAGAAATGTATGACACACCCACCTCTCGGTTTCATCCTGGACCCGAAGTGATCTCGGGAGAGAAGGTG  
 ACCTTCTACTGCCGTCTAGACACTGCAACAAGCATGTTCTTACTGCTCAAGGAGGGAAGATCCAGCCACG  
 TACAGCGCGGATACGGGAAGGTCCAGGGCGAGTCCCCCTGGGCCTGTGACCACAGCCCACCGAGGGAC  
 ATACCGATGTTTTGGCTCCTATAACAACCATGCCTGGTCTTTCCCGAGTGAGCCAGTGAAGCTCCTGGTC  
 ACAGGGCAGATTGAGAACACCAGCCTTGACCTGAAGACCCACCTTTCTGACCATGCCCTCTGGGATC  
 AACTGCCAGAATCTCCTTCGGATGGGCTGGCCTTTCTAGTCTGGTGGCTCTAGTGTGGTTCCTGGT  
 TGAAGACTGGCTCAGCAGGAAGAGGACTAGAGAGCGAGCCAGCAGAGCTTCCACTTGGGAAGGCAGGAGA  
 AGGCTGAACACACAGACTCTT

**ACGCGTACGCGGCCGCTCGAG** - GFP Tag - GTTTAA



[View online »](#)

**Protein Sequence:** >RG226814 representing NM\_001145458  
Red=Cloning site Green=Tags(s)

MSSTLPALLCVGLCLSQRISAQQQLPKPFIWAEPHFMPKPKQVTICCGNYGAVEYQLHFEGSLFAVD  
 RPKPPERINKVKFYIPDMNSRMAGQYSCIYRVGELWSEPSNLLDLVVTEMYDPTLSVHPGPEVISGEKV  
 TFYCRLDATATSMFLLLKEGRSSHVQRGYGKVAEFPLGPVTTAHRGTYRCFGSYNNHAWSPSEPVKLLV  
 TGDIENTSLAPEDPTFPDHALWDHTAQNLLRMGLAFLVLVALVWFLVEDWLSRKTRERASRASTWEGRR  
 RLNTQTL

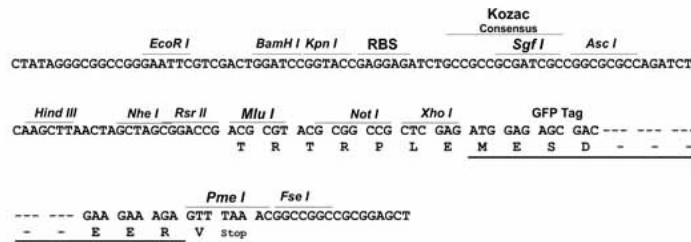
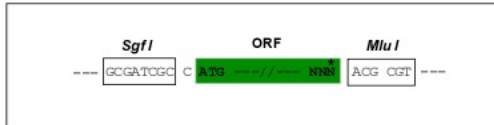
TRTRPLE - GFP Tag - V

**Restriction Sites:**

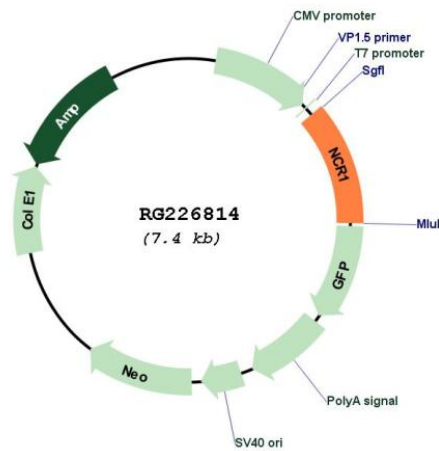
Sgfl-MluI

**Cloning Scheme:**

Cloning sites used for ORF Shuttling:



**Plasmid Map:**



**ACCN:** NM\_001145458

**ORF Size:** 861 bp

<b>OTI Disclaimer:</b>	The molecular sequence of this clone aligns with the gene accession number as a point of reference only. However, individual transcript sequences of the same gene can differ through naturally occurring variations (e.g. polymorphisms), each with its own valid existence. This clone is substantially in agreement with the reference, but a complete review of all prevailing variants is recommended prior to use. <a href="#">More info</a>
<b>OTI Annotation:</b>	This clone was engineered to express the complete ORF with an expression tag. Expression varies depending on the nature of the gene.
<b>Components:</b>	The ORF clone is ion-exchange column purified and shipped in a 2D barcoded Matrix tube containing 10ug of transfection-ready, dried plasmid DNA (reconstitute with 100 ul of water).
<b>Reconstitution Method:</b>	<ol style="list-style-type: none"><li>1. Centrifuge at 5,000xg for 5min.</li><li>2. Carefully open the tube and add 100ul of sterile water to dissolve the DNA.</li><li>3. Close the tube and incubate for 10 minutes at room temperature.</li><li>4. Briefly vortex the tube and then do a quick spin (less than 5000xg) to concentrate the liquid at the bottom.</li><li>5. Store the suspended plasmid at -20°C. The DNA is stable for at least one year from date of shipping when stored at -20°C.</li></ol>
<b>RefSeq:</b>	<a href="#">NM_001145458.1</a> , <a href="#">NP_001138930.1</a>
<b>RefSeq Size:</b>	1102 bp
<b>RefSeq ORF:</b>	864 bp
<b>Locus ID:</b>	9437
<b>UniProt ID:</b>	<a href="#">O76036</a>
<b>Cytogenetics:</b>	19q13.42
<b>Protein Families:</b>	Druggable Genome, Transmembrane
<b>Protein Pathways:</b>	Natural killer cell mediated cytotoxicity
<b>Gene Summary:</b>	Cytotoxicity-activating receptor that may contribute to the increased efficiency of activated natural killer (NK) cells to mediate tumor cell lysis.[UniProtKB/Swiss-Prot Function]