

Product datasheet for **RG226800**

Amyloid Precursor Protein (APP) (NM_001136016) Human Tagged ORF Clone

Product data:

Product Type:	Expression Plasmids
Product Name:	Amyloid Precursor Protein (APP) (NM_001136016) Human Tagged ORF Clone
Tag:	TurboGFP
Symbol:	APP
Synonyms:	AAA; ABETA; ABPP; AD1; alpha-sAPP; APPI; CTFgamma; CVAP; PN-II; PN2; preA4
Mammalian Cell Selection:	Neomycin
Vector:	pCMV6-AC-GFP (PS100010)
E. coli Selection:	Ampicillin (100 ug/mL)



[View online »](#)

ORF Nucleotide Sequence:

>RG226800 representing NM_001136016
 Red=Cloning site Blue=ORF Green=Tags(s)

TTTTGTAATACGACTCACTATAGGGCGGCCGGAATTCGTCGACTGGATCCGGTACCGAGGAGATCTGCC
 GCC**CGGATCGCC**

ATGGACCAATTAGAGACTTGTGGTTCTGTTTATCAACTATGTACCCACTGATGGTAATGCTGGCCTGC
 TGGCTGAACCCAGATTGCCATGTTCTGTGGCAGACTGAACATGCACATGAATGTCCAGAATGGGAAGTG
 GGATTCAGATCCATCAGGGACCAAAACCTGCATTGATACCAAGGAAGGCATCCTGCAAGTATTGCCAAGAA
 GTCTACCTGAACTGCAGATCACCAATGTGGTAGAAGCCAACCAACCAAGTACCATCCAGAAGTGGTGCA
 AGCGGGGCGCAAGCAGTGAAGACCCATCCCACTTTGTGATTCCCTACCGCTGCTTAGTTGGTGAGTT
 TGTAAAGTATGCCCTTCTCGTTCCTGACAAGTGCAAATCTTACACCAGGAGAGGATGGATGTTTGCAGAA
 ACTCATCTTCACTGGCACACCGTCGCCAAAGACATGCAGTGAGAAGAGTACCAACTTGCATGACTACG
 GCATGTTGCTGCCCTGCGGAATTGACAAGTTCCGAGGGGTAGAGTTTGTGTGTTGCCCACTGGCTGAAGA
 AAGTGACAATGTGGATTCTGCTGATGCGGAGGAGGATGACTCGGATGTCTGGTGGGGCGGAGCAGACACA
 GACTATGCAGATGGGAGTGAAGCAAAGTAGTAGAAGTAGCAGAGGAGGAAGAAGTGGCTGAGGTGGAAAG
 AAGAAGAAGCCGATGATGACGAGGACGATGAGGATGGTGTGAGGTAGAGGAAGAGGCTGAGGAACCCCTA
 CGAAGAAGCCACAGAGAGAACCACCAGCATTGCCACCACCACCACCACCACAGAGTCTGTGGAAGAG
 GTGGTTCGAGAGGTGTGCTCTGAACAAGCCGAGACGGGGCCGTGCCGAGCAATGATCTCCCGCTGGTACT
 TTGATGTGACTGAAGGGAAGTGTGCCCCATTCTTTACGGCGGATGTGGCGGCAACCGGAACAACCTTTGA
 CACAGAAGAGTACTGCATGGCCGTGTGTGGCAGCGCCATTCCTACAACAGCAGCCAGTACCCCTGATGCC
 GTTGACAAGTATCTCGAGACACCTGGGGATGAGAATGAACATGCCATTTCCAGAAAGCCAAAGAGAGGC
 TTGAGGCCAAGCACCCGAGAGAGAATGTCCAGGTCATGAGAGAATGGGAAGAGGCAGAACGTCAGCAAA
 GAACTTGCCATAAAGCTGATAAAGAAGGCAGTTATCCAGCATTTCCAGGAGAAAGTGAATCTTTGGAACAG
 GAAGCAGCCAACGAGAGACAGCAGCTGGTGGAGACACACATGGCCAGAGTGAAGCCATGCTCAATGACC
 GCCGCCGCTGGCCCTGGAGAATACATCACCGCTCTGCAGGCTGTTCTCTCGGCCCTCGTCACGTGTT
 CAATATGCTAAAGAAGTATGTCCGCGCAGAACAGAAGGACAGACAGCACACCCTAAAGCATTTCGAGCAT
 GTGCGCATGGTGGATCCCAAGAAAGCCGCTCAGATCCGGTCCCAGGTTATGACACACCTCCGTGTGATTT
 ATGAGCGCATGAATCAGTCTCTCCCTGCTCTACAACGTGCCTGCAGTGGCCGAGGAGATTGAGGATGA
 AGTTGATGAGCTGCTTCAGAAAGAGCAAACTATTGAGATGACGCTTTGGCCAACATGATTAGTGAACCA
 AGGATCAGTTACGAAACGATGCTCTCATGCCATCTTTGACCGAAACGAAACCACCGTGGAGCTCCTTC
 CCGTGAATGGAGAGTTCAGCCTGGACGATCTCCAGCCGTGGCATTCTTTGGGGCTGACTCTGTGCCAGC
 CAACACAGAAAACGAAGTTGAGCCTGTTGATGCCCGCCCTGCTGCCGACCGAGGACTGACCACTCGACCA
 GTTTCTGGGTTGACAAATATCAAGACGGAGGAGATCTCTGAAGTGAAGATGGATGCAGAATTCGACATG
 ACTCAGGATATGAAGTTCATCATCAAAAATGGTGTCTTTGAGAAAGATGTGGGTTCAAACAAAGGTGC
 AATCATTGGACTCATGGTGGGCGGTGTTGTGATAGCGACAGTGCATCGTCATCACCTTGGTGTGCTGAAG
 AAGAAACAGTACACATCCATTTCATGTTGTTGGTGGAGGTTGACGCGCTGTACCCCAAGAGGAGCGCC
 ACCTGTCCAAGATGCAGCAGAACGGCTACGAAAATCCAACCTACAAGTCTTTGAGCAGATGCAGAAC

ACGCGTACGCGGCCGCTCGAG - GFP Tag - GTTTAA

Protein Sequence: >RG226800 representing NM_001136016
 Red=Cloning site Green=Tags(s)

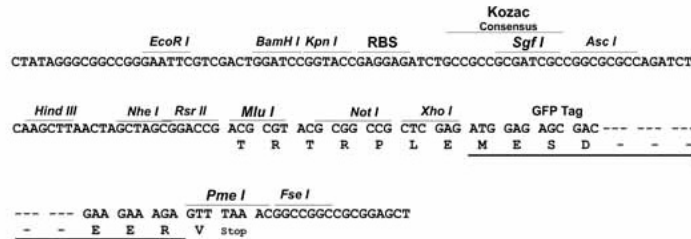
```
MDQLEDLLVLFINYVPTDGNAGLLAEPQIAMFCGRLNMHMNVQNGKWDSDPSGKTCIDTKEGILQYCQE
VYPELQITNVVEANQPVTIQNWCKRGRKQCKTHPHFVIPYRCLVGEFVSDALLVPDKCKFLHQERMDVCE
THLHWHTVAKETCSEKSTNLHDYGMLLPCGIDKFRGVEFVCCPLAEEEDNVDSADAEEEDSDVWGGADT
DYADGSEDKVVEVAEEEEVAEEEEADDEDEDEDEGDEVEEEAEEPYEEATERTTSIATTTTTTTESVVE
VVREVCSEQAETGPCRAMISRWFYFDVTEGKCAPFFYGGCGGNRNNFDTEEYCMVCGSAIPTTAASTPDA
VDKYLETPGDENEHAHFQKAKERLEAKHRERMSQVMREWEAERQAKNLPKADKKAVIQHFQEKVESLEQ
EAANERQQLVETHMARVEAMLNDRRRLALENYITALQAVPPRPRHVFNMLKKYVRAEQKDRQHTLKHFEH
VRMVDPKKAAQIRSQVMTHLRVIYERMNQLSLLYNVPAVAEEIQDEVELLQKEQNYSDVLANMISEP
RISYGNDALMPSLTETKTTVELLPVNGEFLSDDLQPWHSFGADSVANTENEVEPVDARPAADRGLTTRP
GSLGTLNIKTEEISEVKMDAEFRHDSGYEVHHQKLVFFAEDVGSNGAIIIGLMVGGVVIATVIVITLVMKL
KKQYTSIHGGVVEVDAAVTPEERHLSKMQQNGYENPTYKFFEQMQN
```

TRTRPLE - GFP Tag - V

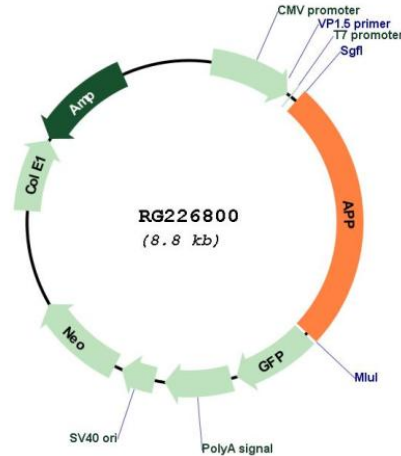
Restriction Sites: SgfI-MluI

Cloning Scheme:

Cloning sites used for ORF Shutting:



Plasmid Map:



ACCN: NM_001136016

ORF Size: 2238 bp

OTI Disclaimer: Due to the inherent nature of this plasmid, standard methods to replicate additional amounts of DNA in E. coli are highly likely to result in mutations and/or rearrangements. Therefore, OriGene does not guarantee the capability to replicate this plasmid DNA. Additional amounts of DNA can be purchased from OriGene with batch-specific, full-sequence verification at a reduced cost. Please contact our customer care team at custsupport@origene.com or by calling 301.340.3188 option 3 for pricing and delivery.

The molecular sequence of this clone aligns with the gene accession number as a point of reference only. However, individual transcript sequences of the same gene can differ through naturally occurring variations (e.g. polymorphisms), each with its own valid existence. This clone is substantially in agreement with the reference, but a complete review of all prevailing variants is recommended prior to use. [More info](#)

OTI Annotation: This clone was engineered to express the complete ORF with an expression tag. Expression varies depending on the nature of the gene.

Components: The ORF clone is ion-exchange column purified and shipped in a 2D barcoded Matrix tube containing 10ug of transfection-ready, dried plasmid DNA (reconstitute with 100 ul of water).

Reconstitution Method:	<ol style="list-style-type: none">1. Centrifuge at 5,000xg for 5min.2. Carefully open the tube and add 100ul of sterile water to dissolve the DNA.3. Close the tube and incubate for 10 minutes at room temperature.4. Briefly vortex the tube and then do a quick spin (less than 5000xg) to concentrate the liquid at the bottom.5. Store the suspended plasmid at -20°C. The DNA is stable for at least one year from date of shipping when stored at -20°C.
RefSeq:	NM_001136016.3 , NP_001129488.1
RefSeq Size:	3572 bp
RefSeq ORF:	2241 bp
Locus ID:	351
UniProt ID:	P05067
Cytogenetics:	21q21.3
Protein Families:	Druggable Genome, Transmembrane
Protein Pathways:	Alzheimer's disease
Gene Summary:	<p>This gene encodes a cell surface receptor and transmembrane precursor protein that is cleaved by secretases to form a number of peptides. Some of these peptides are secreted and can bind to the acetyltransferase complex APBB1/TIP60 to promote transcriptional activation, while others form the protein basis of the amyloid plaques found in the brains of patients with Alzheimer disease. In addition, two of the peptides are antimicrobial peptides, having been shown to have bacteriocidal and antifungal activities. Mutations in this gene have been implicated in autosomal dominant Alzheimer disease and cerebroarterial amyloidosis (cerebral amyloid angiopathy). Multiple transcript variants encoding several different isoforms have been found for this gene. [provided by RefSeq, Aug 2014]</p>