

Product datasheet for **RG226733**

TRPC4 (NM_001135958) Human Tagged ORF Clone

Product data:

Product Type:	Expression Plasmids
Product Name:	TRPC4 (NM_001135958) Human Tagged ORF Clone
Tag:	TurboGFP
Symbol:	TRPC4
Synonyms:	HTRP-4; HTRP4; TRP4
Mammalian Cell Selection:	Neomycin
Vector:	pCMV6-AC-GFP (PS100010)
E. coli Selection:	Ampicillin (100 ug/mL)



[View online »](#)

ORF Nucleotide
Sequence:

>RG226733 representing NM_001135958
Red=Cloning site Blue=ORF Green=Tags(s)

TTTTGTAATACGACTCACTATAGGGCGGCCGGAATTCGTCGACTGGATCCGGTACCGAGGAGATCTGCC
GCC**CGGATCGCC**

ATGGCTCAGTTCTATTACAAAAGAAATGTTAATGCTCCCTATAGAGACCGCATCCCTCTAAGGATAGTAA
GAGCAGAATCAGAACTCTGCCATCAGAAAAAGCCTACTTGAATGCTGTGAAAAAGGAGATTATGCCAG
TGCAAGAAATCCCTAGAGGAAGCTGAAATTTATTTTAAAATCAATATTAAATGCATTGATCCTCTCGGA
AGAAGTCTCTCCTCATTGCAATTGAAAATGAGAACTGGAGCTCATCGAACTACTCTTAAAGCTTTAATG
TCTATGTTGGAGATGCTCTATTACATGCTATCAGAAAAGAAGTCGTCGGAGCTGTTGAGCTGTTATTGAA
CCACAAAAACCTAGTGGAGAAAAACAGTTTGTGCCAGCCCAATTGTCAACAGCTGCTGGCATCTCGC
TGGTACGATGAGTTCCAGGCTGGAGGAGAAGACTGGGCAGTGAAGATGGTGACATGTTTCATAATAG
GACTTCTTTTCTGCTTCTCTGTGTGCTACCTGATAGCTCCAAAAGCCCACTGGACTGTTTCATCAG
GAAGCCATTTATCAAGTTTATCTGCCACACAGCCTCTATTTGACTTTTTGTTCTGCTGCTGCTGCTGCC
TCTCAGCACATCGACAGTCTGAGACTTGAACAGGCAAGGTCCACCACCAACCATCGTCGAGTGGATGATAT
TACCGTGGGTCCTGGGCTTCATATGGGGAGAAATTAACAGATGTGGGATGGCGGACTTCAGGACTACAT
CCATGATTGGTGGAACTAATGGACTTTGTAATGAACTCCTTATATTTAGCAACAATCTCCTTAAAAATT
GTTGCAATTTGAAAGTACAGTGCCTTAATCCACGAGAATCATGGGACATGTGGCATCCCACTCTGGTGG
CAGAGGCTTTATTTGCTATTGCAAACTCTCAGTTCTCTGCGTCTGATCTCACTGTTTACTGCAAAATC
TCACCTGGGACCTCTGCAAAATCTCTGGAAGAATGCTCCTGGACATTTTGAAGTTTCTATTATATAC
TGCTTTGTTGCTAGCATTGCAAAATGGCCTAAATCAATTGACTTCTATTATGAAGAAACGAAAGGGT
TAACCTGCAAGGCATAAGATGTGAAAAGCAGAATAATGCATTTTCAACGTTATTTGAGACACTGCAGTC
CCTGTTTTGGTCAATATTTGGGCTCATCAATTTATATGTGACCAATGTCAAAGCACAGCATGAATTTACT
GAGTTTGGTGGCCACCATGTTGGGACATACAATGTCATCTCTGTTGTTCTACTCAACATGTTAA
TAGCTATGATGAATAATTCTTACCAACTGATTGCTGACCATGCAGATATAGAATGGAAATTTGCACGAAC
AAAGCTTTGGATGAGTTATTTGAAAGAGGAGTACTCTGCCTACTCCCTTCAATGTCATCCCGAGCCCC
AAGTCTCTGTTACCTGATCAAATGGATCTGGACACACTTGCAAGAAAAAGATGAGAAGAAAGCCAG
AAAGTTTTGGAACAATAGGGAGGCGAGCTGCTGATAACTTGAGAAGACATACCAATACCAAGAAGTTAT
GAGGAACCTGGTGAAGCGATACGTTGCTGCAATGATTAGAGATGCTAAAAGTGAAGAAGGCTGACCGAA
GAGAACTTTAAGGAACTAAAGCAAGACATTTCTAGTTTCCGCTTTGAAGTCTGGGATTACTAAGAGGAA
GCAAACTTTCCACAATACAATCTGCGAATGCCTCGAAGGAGTCTCAAATTCGGCAGACTCAGATGAAAA
GAGTGATAGCGAAGGTAATAGCAAGGACAAGAAAAAGAATTTTCAGCCTTTTTGATTTAACCCCTGATT
CATCCGAGATCAGCAGCAATTGCCTCTGAAAGACATAACATAAGCAATGGCTCTGCCCTGGTGGTTCCAGG
AGCCGCCAGGGAGAAGCAGAGAAAAAGTGAATTTGTGACCGATATCAAAAACCTTTGGGTTATTTTCATAG
ACGATCAAAACAAAAATGCTGCTGAGCAAAATGCAAAACCAATCTCTCTGTTTCAGAAGAAGTTGCTCGT
CAACAGGCTGCAGGACCACTTGAGAGAAATATCAACTGGAATCTCGAGGATTAGCTTACGGGGTGACC
TGAGCATTCCCGGTCTCAGTGAACAATGTGTGTTAGTAGACCATAGAGAAAGGAATACGGACACACTGGG
GTTACAGGTAGGAAAGAGAGTGTGTCATTCAAGTCAGAGAAGGTGGTGGTGGAGGACACGGTTCCTATA
ATACCAAAGGAGAAACATGCAAAAAGAGAGGACTCTAGTATAGACTATGATCTAAACCTCCAGACACAG
TCACCCACGAAGATTACGTGACCACAAGATTG

ACGCGTACGCGGCCGCTCGAG – GFP Tag – GTTTAA

Protein Sequence: >RG226733 representing NM_001135958
Red=Cloning site Green=Tags(s)

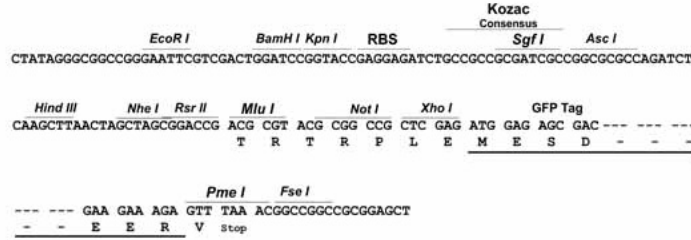
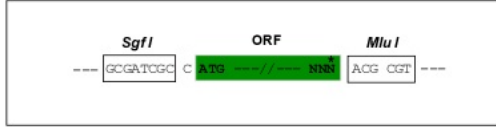
MAQFYKRNVNAPYRDRIPLRIVRAESELSPSEKAYLNAVEKGDYASVKKSLLEEAEIYFKININCIDPLG
RTALLIAIENENLELIELLLSFNVYVGDALLHAIRKEVVGAVELLLNHKKPSGEKQFVAQPNCQQLLASR
WYDEFGWRRRHWA VKMVTCFIIGLLFPVFSVCYLIAPKSPGLGFIKPFIKFICHTASYLTFLFLLLLA
SQHIDRSDLNRQGPPTIVEWMILPWVLFIEWEIKQMWDGGLQDYIHDWWNLMD FVMNSLYLATISLKI
VAFVKYSALNPRESWDMWHPTLVAEALFAIANIFSSLRLISLFTANSHLGPLQISLGRMLLDILKFLFIY
CLVLLAFANGLNQLYFYEEETKGLTCKGIRCEKQNNAFSTLFETLQSLFWSIFGLINLYVTNVKAQHEFT
EFVGATMFGTYNVISLVLLNMLIAMMNSYQLIADHADIEWKFARTKLWMSYFEEGGTLPTPFNVIPSP
KSLWYLKWIWTHLCKKKMRRKPESFGTIGRRAADNLRHHQYQEVMRNLVKRYVAAMIRDAKTEEGLTE
ENFKELKQDISSFRFEVLGLLRGSKLSTIQSANASKESSNSADSDEKSDSEGNSKDKKNFSLFDLTTLI
HPRSAAIASERHNISNGSALVVQEPREKQRKVNFTDIKNFGLFHRRSKQNAEQNANQIFSVSEEVAR
QQAAGPLERNIQLESRGLASRGDLSIPGLSEQCVLVDHRENTDTLGLQVGKRVCPFKSEKVVVEDTVP
IPKEKHAKKEEDSSIDYDLNLPDVTHTEDYVTTTL

TRTRPLE - GFP Tag - V

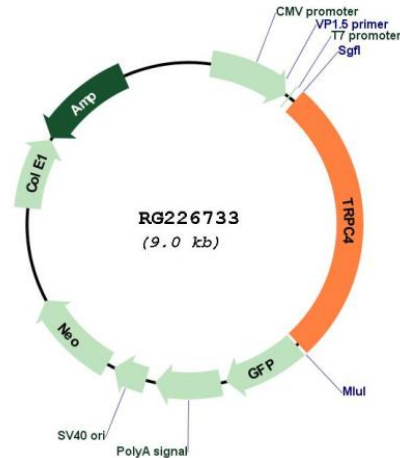
Restriction Sites: Sgfl-MluI

Cloning Scheme:

Cloning sites used for ORF Shutting:



Plasmid Map:



ACCN: NM_001135958

ORF Size: 2412 bp

OTI Disclaimer: The molecular sequence of this clone aligns with the gene accession number as a point of reference only. However, individual transcript sequences of the same gene can differ through naturally occurring variations (e.g. polymorphisms), each with its own valid existence. This clone is substantially in agreement with the reference, but a complete review of all prevailing variants is recommended prior to use. [More info](#)

OTI Annotation: This clone was engineered to express the complete ORF with an expression tag. Expression varies depending on the nature of the gene.

Components: The ORF clone is ion-exchange column purified and shipped in a 2D barcoded Matrix tube containing 10ug of transfection-ready, dried plasmid DNA (reconstitute with 100 ul of water).

Reconstitution Method:

1. Centrifuge at 5,000xg for 5min.
2. Carefully open the tube and add 100ul of sterile water to dissolve the DNA.
3. Close the tube and incubate for 10 minutes at room temperature.
4. Briefly vortex the tube and then do a quick spin (less than 5000xg) to concentrate the liquid at the bottom.
5. Store the suspended plasmid at -20°C. The DNA is stable for at least one year from date of shipping when stored at -20°C.

RefSeq: [NM_001135958.3](#)

RefSeq Size: 3015 bp

RefSeq ORF: 2415 bp

Locus ID: 7223

UniProt ID: [Q9UBN4](#)

Cytogenetics: 13q13.3

Protein Families: Druggable Genome, Ion Channels: Transient receptor potential, Transmembrane

Gene Summary: This gene encodes a member of the canonical subfamily of transient receptor potential cation channels. The encoded protein forms a non-selective calcium-permeable cation channel that is activated by Gq-coupled receptors and tyrosine kinases, and plays a role in multiple processes including endothelial permeability, vasodilation, neurotransmitter release and cell proliferation. Single nucleotide polymorphisms in this gene may be associated with generalized epilepsy with photosensitivity. Alternatively spliced transcript variants encoding multiple isoforms have been observed for this gene. [provided by RefSeq, Aug 2011]