

Product datasheet for **RG226717**

ATXN7L1 (NM_138495) Human Tagged ORF Clone

Product data:

Product Type:	Expression Plasmids
Product Name:	ATXN7L1 (NM_138495) Human Tagged ORF Clone
Tag:	TurboGFP
Symbol:	ATXN7L1
Synonyms:	ATXN7L4
Mammalian Cell Selection:	Neomycin
Vector:	pCMV6-AC-GFP (PS100010)
E. coli Selection:	Ampicillin (100 ug/mL)



[View online »](#)

ORF Nucleotide Sequence:

>RG226717 representing NM_138495
 Red=Cloning site Blue=ORF Green=Tags(s)

TTTTGTAATACGACTCACTATAGGGCGGCCGGGAATTCGTCGACTGGATCCGGTACCGAGGAGATCTGCC
 GCC**GCGATCGCC**

ATGTGTAGACCTTCTCCCTCTCCAGTGTCTCCAGCCTCCAATCCCAGGACATCACTAGTACAGGTGAAAA
 CAAAAGCCTGTCTCAGCGGCCATCACTCTGCCAGCAGCACCTCAAAGCCATTCAAACGCCCAAAGACAA
 TCTACTTACCTCCAGCAGCAAACAGCACACAGTCTTTCCTGCGAAAGGATCAAGGGATAAACCATGTGTT
 CCAGTTCTCTGTAGTCAGTTTAGAGAAAAATCTAACCTAGTGAAGGCAGATGGTGCCAATGTCAAATGA
 ACTCCACAACCACTACTGCAGTTTCTGCCTCCTCCACCTCGTCTCTGCCGTCTCCACCCCTCCTTAAT
 TAAGCCTGTCCTGATGTCCAAGTCAGTCCACCTTACCAGAGAAGATCTTAAATGGCAAAGGAATCTG
 CCAACCACCATAGACAAGAAACACAAAATGGCACAAAAACAGCAACAAGCCTTACAGGAGACTTTCAG
 AGAGAGAAATTTGACCAAATAAACACTGTGGAGTATTGGATCCCGAGACAAGAAACCTTGCACAAGATC
 CCTCACCTGCAAGACACATTCGTAAGCCATCGGAGGGCAGTCCCAGGCCGAAAAAGCAATTTGACCTC
 CTCTGGCAGAACACAAAGCAAAGTCCCGGAAAAAGAAGTTAAAGATAAAGAGCATCTCCTGACTTCCA
 CGAGGGAAATACTTCAAAGCCAATCCGGGCCGGCACAGGATTCTCTGCTAGGGTCTTCAGGGAGCTCTGG
 GCCAGAACCAAAGTTGCATCCCCTGCAAAATCCAGACCACCAACTCTGTACTTCTTAGACCATCATCT
 GCAAAATAGCATAAGCAGCAGCACATCTTCAAATCATAGCGGCCACACTCCAGAGCCCCACTCCCACCGG
 TTGGAGGTGACCTCGCCAGCCGACTGTCCAGTGATGAAGGGGAGATGGACGGAGCCGACGAATCCGAGAA
 GCTAGACTGTGAGTTCTCCAGCACCACCCAGACCTCTGGCGTTTTGCTCATTTGGGAGTCGCCTCATG
 GGACGAGGGTACTATGTGTTTGTAGAAGATGGGATCGTTTTCGATTGCACTAAACTCCATGGTAGAAA
 AACACCTGAATTCACAGATGTGGAAGAAGATCCCTCCTGCGGCAGATAGCCCCCTGCCCTCGCAGCAGC
 CCACATACCACCCCGTTCCAGCATCCGTTTTGAGCCTTTAGCAACCCCAAGTGTGTATCTTCTCT
 TCAGCTCCATCAGCTCGAGGCTCACCTTCTTACATAATGACATCAGCCATGCTCTCAAACGCAGCTT
 TCGTGACATCGCCGACCCGAGCGCCCTCATGTCCACACCACAGCTTTCCTCATGTGGCCGCAACCCCT
 CAGCATCATGGACTCAACCTTCAAGGCCCATCCGCCGTGCCCCGATACCAGCCGTCATCCCTTCCCCA
 TCCCACAAGCCATCCAAAACAAAACCAGCAAATCCTCAAAGTCAAAGACCTGTCCACCCGTAGCGACG
 AGTCTCCAAGTAACAAAAAAGGAAGCCACAGTCTTGCAGTCTCCTCCTCCTCCTCCTCCTCCTCCTC
 CTTGCAGACATCCCTCTCGTCTCCACTGTCAGGGCCTCACAAAAAGAACTGTGTTTTGAATGCCAGTTCT
 GCTTTGAACTCCTATCAGGCGGCCCTCCCTATAACAGCCTGTCTGTGCACAACCAACAATGGGGTGA
 GCCCACTCAGTGCAAACCTGGAGCCCTCAGGACGGACCTCGCTGCCCGGGGCCCGCGGACATAGTGAG
 ACAGGTGGGCGCGGTGGGAGGCAGCAGTACTCCTGTCCCTCTCTGTGCCCTCCCTTGGCTCCACGCA
 GGGGACCTCTCTTGGCCTCACACAATGCTGTGCTTCTCTGCCCTCTCTTTGACAAATCAGAAGGAA
 AAAAGCGTAAGAACTCGAGTTCTAGTAGCAAAGCCTGTAATACTAAAATGCCTGGTATGAATAGCGT
 TCACAAAAAGAACCCGCCAGCCTTCTCGCACCAGTCCCGATCCCGTTAACAGCACCTCCTCTCGGCAG
 GTTGGGAAAAATAGCAGCCTAGCTTTGTCACAATCCAGTCTTCAAGTATATCCAGCCCAGGACACAGCC
 GACAGAAGAACAACAGAACGGGCAGGATAAGGACTTCCA

ACGCGTACGCGGCCGCTCGAG - GFP Tag - GTTTAA

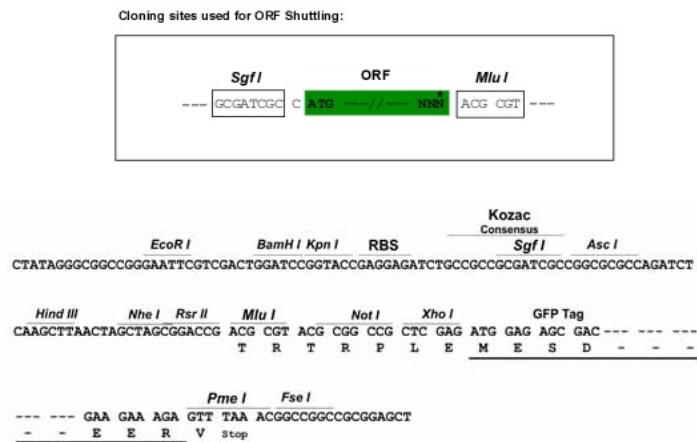
Protein Sequence: >RG226717 representing NM_138495
 Red=Cloning site Green=Tags(s)

```
MCRPSPSPVSPASNPRTSLVQVKTKACLSGHHSASSTSKPFKTPKDNLLTSSSKQHTVFPKAGSRDKPCV
PVPVVSLEKIPNLVKADGANVKMNSTTTTAVSASSTSSSAVSTPPLIKPVLMSKSVPPSPEKILNGKIL
PTTIDKKHQGTKNSNKPYYRRLSEREFDPNKHCGVLDPETKKPCTRSLTCKTHSLSHRRVAVPGRKKQFDL
LLAEHKAKSREKEVKDEHELLTSTREILPSQSGPAQDSSLGSSGSSGPEPKVASPAKSRPPNSVLRPSS
ANSISSSTSSNHSGHTPEPPLPPVGGDLASRLSSDEGEMDGADESEKLDQCQFSTHHRPLAFCSFGSRLM
GRGYVDFDRRWRFRFALNSMVEKHLNSQMWKIIPPAADSPLPSPAHHITTPVPAVSLQPFNSPSAVYLP
SAPISSRLTSSYIMTSAMLNAAFVTSPPSALMSHTTAFPHVAATLSIMDSTFKAPSAVSPIPAVIPSP
SHKPSKTKTSKSKVKDLSTRSDESPSNKRRKQSSSTSSSSSSSSSLQTSLSPLSGPHKKNCVLNASS
ALNSYQAAPPYNSLVHNSNNGVSPLSAKLEPSGRTSLPGGPADIVRQVAVGGSSDSCPLSVPSLALHA
GDL SLASHNAVSSLPLSFDKSEGKKRKNSSSSSKACKITKMPGMNSVHKKNPPSLLAPVDPVNSTSSRQ
VGKNSSLALSQSSPSSISSPGHSRQKNTNRTGRIRTLPL
```

TRTRPLE - GFP Tag - V

Restriction Sites: SgfI-MluI

Cloning Scheme:



ACCN: NM_138495

ORF Size: 2214 bp

OTI Disclaimer: The molecular sequence of this clone aligns with the gene accession number as a point of reference only. However, individual transcript sequences of the same gene can differ through naturally occurring variations (e.g. polymorphisms), each with its own valid existence. This clone is substantially in agreement with the reference, but a complete review of all prevailing variants is recommended prior to use. [More info](#)

OTI Annotation: This clone was engineered to express the complete ORF with an expression tag. Expression varies depending on the nature of the gene.

Components: The ORF clone is ion-exchange column purified and shipped in a 2D barcoded Matrix tube containing 10ug of transfection-ready, dried plasmid DNA (reconstitute with 100 ul of water).

Reconstitution Method:

1. Centrifuge at 5,000xg for 5min.
2. Carefully open the tube and add 100ul of sterile water to dissolve the DNA.
3. Close the tube and incubate for 10 minutes at room temperature.
4. Briefly vortex the tube and then do a quick spin (less than 5000xg) to concentrate the liquid at the bottom.
5. Store the suspended plasmid at -20°C. The DNA is stable for at least one year from date of shipping when stored at -20°C.

RefSeq: [NM_138495.1](#), [NP_612504.1](#)

RefSeq Size: 5423 bp

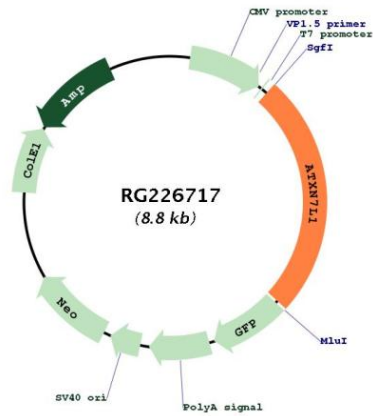
RefSeq ORF: 2217 bp

Locus ID: 222255

UniProt ID: [Q9ULK2](#)

Cytogenetics: 7q22.3

Product images:



Circular map for RG226717