

Product datasheet for **RG226715**

TRPC4 (NM_001135956) Human Tagged ORF Clone

Product data:

Product Type:	Expression Plasmids
Product Name:	TRPC4 (NM_001135956) Human Tagged ORF Clone
Tag:	TurboGFP
Symbol:	TRPC4
Synonyms:	HTRP-4; HTRP4; TRP4
Mammalian Cell Selection:	Neomycin
Vector:	pCMV6-AC-GFP (PS100010)
E. coli Selection:	Ampicillin (100 ug/mL)



[View online »](#)

ORF Nucleotide Sequence:

>RG226715 representing NM_001135956
 Red=Cloning site Blue=ORF Green=Tags(s)

TTTTGTAATACGACTCACTATAGGGCGGCCGGAATTCGTCGACTGGATCCGGTACCGAGGAGATCTGCC
 GCC**CGGATCGCC**

ATGGCTCAGTTCTATTACAAAAGAAATGTTAATGCTCCCTATAGAGACCGCATCCCTCTAAGGATAGTAA
 GAGCAGAATCAGAACTCTGCCATCAGAAAAAGCCTACTTGAATGCTGTGAAAAAGGAGATTATGCCAG
 TGTCAAGAAATCCCTAGAGGAAGCTGAAATTTATTTTAAAATCAATATTAATTGCATTGATCCTCTCGGA
 AGAACTGCTCTCCTCATTGCAATTGAAAATGAGAACTGGAGCTCATCGAACTACTCTTAAGCTTTAATG
 TCTATGTTGGAGATGCTCTATTACATGCTATCAGAAAAGAAGTCGTCGGAGCTGTTGAGCTGTTATTGAA
 CCACAAAAACCTAGTGGAGAAAAACAGGTGCCTCCTATACTCCTTGATAAGCAGTTCTCTGAATCACT
 CCAGACATTACACCAATCATTTTGGCAGCCCATACAAATAATTATGAGATAATAAACTCTTGGTTCAGA
 AAGGAGTCTCAGTGCCTCGACCCACGAGGTCCGCTGAACTGTGTGGAATGCGTGTCCAGTTCAGATGT
 GGACAGCTCCGTCACGCTCCAGACTCAACATCTACAAGGCCTTGCCAGTCCCTCTCTCATTGCA
 CTGTCAAGCGAAGATCCTTTTCTCACAGCTTTTCAAGTTAAGTTGGGAACCTCAGGAACCTGAGCAAGTGG
 AAAATGAATCAAGTCGGAGTATGAAGAGCTGTACGGCAGTGCACAAATTTGCTAAGGACCTACTGGA
 TCAGACGAGAAGTTCAGAGAAGTGGAAATCATTCTTAATTACCGAGATGACAATAGTCTCATAGAAGAA
 CAAAGTGGAAATGATCTTGCAAGACTAAAATGGCCATTAAGTACCGTCAAAAAGAGTTTGTGGCCAGC
 CCAATTGTCAACAGCTGCTGGCATCTCGCTGGTACGATGAGTTTCCAGGCTGGAGGAGAAGACACTGGGC
 AGTGAAGATGGTGACATGTTTATAATAGGACTTCTTTTCTGTCTTCTCTGTGTGCTACCTGATAGCT
 CCCAAAAGCCACTTGGACTGTTTCATCAGGAAGCCATTTATCAAGTTTATCTGCCACACAGCCTCCTATT
 TGACTTTTTTGTCTGCTGCTGCTGCCTCTCAGCACATCGACAGGTCAGACTTGAACCAAGTCC
 ACCACCAACCATCGTCGAGTGGATGATATTACCGTGGGTCTGGGCTTCATATGGGGAGAAATTAACAG
 ATGTGGGATGGCGGACTTCAGGACTACATCCATGATTGGTGAATCTAATGGACTTTGTAATGAACCTCT
 TATATTTAGCAACAATCTCCTTGAAAATGTTGCAATTTGTAAGTACAGTGCCCTTAATCCACGAGAATC
 ATGGGACATGTGGCATCCACTCTGGTGGCAGAGGCTTTATTTGCTATTGCAAACATCTTCAGTTCTCTG
 CGTCTGATCTCACTGTTTACTGCAAATCTCACCTGGGACCTCTGCAAATATCTCTGGGAAGAAATGCTCC
 TGGACATTTTGAAGTTTCTATTCATATACTGCCTTGTGTTGCTAGCATTGCAAATGGCCTAAATCAATT
 GTACTTCTATTATGAAGAAACGAAAGGGTTAACCTGCAAAGGCATAAGATGTGAAAAGCAGAATAATGCA
 TTTTCAACGTTATTTGAGACACTGCAGTCCCTGTTTTGGTCAATATTTGGGCTCATCAATTTATATGTGA
 CCAATGTCAAAGCACAGCATGAATTTACTGAGTTTGTGGTGCCACCATGTTGGGACATACAATGTCAT
 CTCTCTGGTTGTTCTACTCAACATGTTAATAGCTATGATGAATAATTCTTACCAACTGATTGCTAGGCGA
 GCTGCTGATAACTTGAGAAGACATCACCAATACCAAGAAGTTATGAGGAACCTGGTGAAGCGATACGTTG
 CTGCAATGATTAGAGATGCTAAAAGTGAAGAAGGCCTGACCGAAGAGAAGTAAAGGAACTAAAGCAAGA
 CATTTCTAGTTTCCGCTTTGAAGTCTGGGATTACTAAGAGGAAGCAAATTTCCACAATACAATCTGCG
 AATGCCTCGAAGGAGTCTTCAAATTCGGCAGACTCAGATGAAAAGAGTATAGCGAAGAAGAAGTTGCTC
 GTCAACAGGCTGCAGGACCACTTGAGAGAAATTTCAACTGGAATCTCGAGGATTAGCTTACGGGGTGA
 CCTGAGCATTCCCGTCTCAGTGAACAATGTGTGTTAGTACCCATAGAGAAAGGAATACGGACACACTG
 GGGTTACAGGTAGGAAAGAGAGTGTGTCCATTCAGTCAAGTCAAGTCAAGTCAAGTCAAGTCAAGTCAAGT
 TAATACCAAAGGAGAAACATGCAAAAAGAAGAGGACTCTAGTATAGACTATGATCTAAACCTCCAGACAC
 AGTCAACCCACGAAGATTACGTGACCACAAGATTG

ACGGTACGCGGCCGCTCGAG – GFP Tag – GTTTAA

Protein Sequence: >RG226715 representing NM_001135956
Red=Cloning site Green=Tags(s)

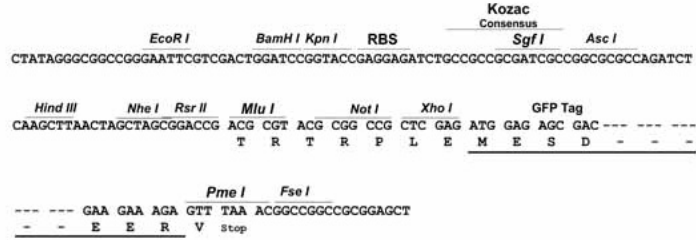
MAQFYKRNVNAPYRDRIPLRIVRAESELSPSEKAYLNAVEKGDYASVKKSLLEEAEIYFKININCIDPLG
RTALLIAIENENLELIELLLSFNVYVGDALLHAIRKEVVGAVELLLNHKKPSGEKQVPPILLDKQFSEFT
PDITPIILAAHTNNYEIIKLLVQKGVSVPRPHEVRCNCVECVSDDVDSLRRHSRSLNIYKALASPSLIA
LSSEDPFLTAFQLSWELQELSKVENEFKSEYEELSRQCKQFAKDLLDQTRSSRELEIILNYRDDNSLIEE
QSGNDLARLKLAIKYRQKEFVAQPNCQQLLASRWYDEFPGWRRRHWA VKMVTCTFIIGLLFPVFSVCYLIA
PKSPLGLFIRKPFIKFIHTASYLTFLFLLLLASQHIDRSDLNRQGPPPTIVEWMILPWVLFVWGEIKQ
MWDGGLQDYIHDWWNLMDVFNLSLYLATISLKIVAFVKYSALNPRESWDMWHPTLVAEALFAIANIFSSL
RLISLFTANSHLGPLQISLGRMLLDILKFLFIYCLVLLAFANGLNQLYFYYEETKGLTCKGIRCEKQNNA
FSTLFETLQSLFWSIFGLINLYVTNVKAQHEFTEFVGATMFGTYNVISLVLLNMLIAMMNSYQLIARR
AADNLRHHQYQEVMRNLVKRYVAAMIRDAKTEEGLTEENFKELKQDISSFRFEVLG LLRGSKLSTIQSA
NASKESSNSADSDEKSDSEEEVARQQAAGPLERNIQLESRLASRGDLSIPGLSEQCVLVDHRERNTDTL
GLQVGRKRVCPFSEKVVVEDTVP IIPKEKHAKEEDSSIDYDLNLPDVTHTEDYVTRRL

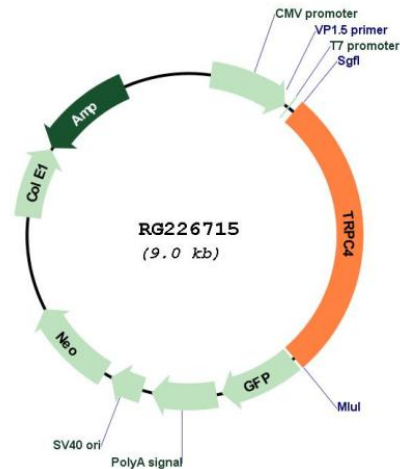
TRTRPLE - GFP Tag - V

Restriction Sites: Sgfl-MluI

Cloning Scheme:

Cloning sites used for ORF Shutting:



Plasmid Map:


ACCN: NM_001135956

ORF Size: 2484 bp

OTI Disclaimer: The molecular sequence of this clone aligns with the gene accession number as a point of reference only. However, individual transcript sequences of the same gene can differ through naturally occurring variations (e.g. polymorphisms), each with its own valid existence. This clone is substantially in agreement with the reference, but a complete review of all prevailing variants is recommended prior to use. [More info](#)

OTI Annotation: This clone was engineered to express the complete ORF with an expression tag. Expression varies depending on the nature of the gene.

Components: The ORF clone is ion-exchange column purified and shipped in a 2D barcoded Matrix tube containing 10ug of transfection-ready, dried plasmid DNA (reconstitute with 100 ul of water).

Reconstitution Method:

1. Centrifuge at 5,000xg for 5min.
2. Carefully open the tube and add 100ul of sterile water to dissolve the DNA.
3. Close the tube and incubate for 10 minutes at room temperature.
4. Briefly vortex the tube and then do a quick spin (less than 5000xg) to concentrate the liquid at the bottom.
5. Store the suspended plasmid at -20°C. The DNA is stable for at least one year from date of shipping when stored at -20°C.

RefSeq: [NM_001135956.3](#)

RefSeq Size: 3087 bp

RefSeq ORF: 2487 bp

Locus ID: 7223

UniProt ID: [Q9UBN4](#)

Cytogenetics: 13q13.3

Protein Families: Druggable Genome, Ion Channels: Transient receptor potential, Transmembrane

Gene Summary: This gene encodes a member of the canonical subfamily of transient receptor potential cation channels. The encoded protein forms a non-selective calcium-permeable cation channel that is activated by Gq-coupled receptors and tyrosine kinases, and plays a role in multiple processes including endothelial permeability, vasodilation, neurotransmitter release and cell proliferation. Single nucleotide polymorphisms in this gene may be associated with generalized epilepsy with photosensitivity. Alternatively spliced transcript variants encoding multiple isoforms have been observed for this gene. [provided by RefSeq, Aug 2011]