

Product datasheet for **RG226693**

COG6 (NM_001145079) Human Tagged ORF Clone

Product data:

| | |
|---------------------------|--|
| Product Type: | Expression Plasmids |
| Product Name: | COG6 (NM_001145079) Human Tagged ORF Clone |
| Tag: | TurboGFP |
| Symbol: | COG6 |
| Synonyms: | CDG2L; COD2; SHNS |
| Mammalian Cell Selection: | Neomycin |
| Vector: | pCMV6-AC-GFP (PS100010) |
| E. coli Selection: | Ampicillin (100 ug/mL) |



[View online »](#)

ORF Nucleotide Sequence:

>RG226693 representing NM_001145079
 Red=Cloning site Blue=ORF Green=Tags(s)

TTTTGTAATACGACTCACTATAGGGCGGCCGGGAATTCGTCGACTGGATCCGGTACCGAGGAGATCTGCC
 GCC**CGGATCGCC**

ATGGCAGAGGGCAGCGGGGAAGTGGTGCAGTGTCTGCGACCGGGGTGCCAACGCCTCAACAATGGGG
 CAGGCGGGACCTCGGCGACGACCTGCAACCCGCTGTCGCGCAAGCTGCATAAGATCCTGGAGACGGGCT
 GGACAACGACAAGGAGATGTTAGAAGCTCTCAAGGCACCTTCAACCTTTTTTTGTTGAAAATAGTCTGCGG
 ACTCGAAGAAATTTACGTGGAGATATTGAACGTAAAAGTTAGCCATCAATGAAGAATTTGTAAGCATT
 TCAAGGAAGTGAAGGAGGAAGTGAAGCATAGCGAAGATGTTCAAGCAATGAGCAACTGTTGTCAAGA
 TATGACAAGTGCCTACAGGCAGCAAAGGAACAGACTCAAGATTTAATAGTAAAAACCACTAAGCTTCAA
 TCTGAAAGCCAAAAATTAGAGATAAGAGCTCAAGTTGCAGATGCCTTCTATCCAAGTTCCAAGTACT
 CTGATGAAATGAGTCTTCTCCGAGGTACAAGAGAAGGACCCATTACTGAGGATTTTTTCAAGGCACTGGG
 AAGAGTAAACAGATTCATAATGATGTCAAAGTCTCTTTCGCTACAAATCAACAAACGGCAGGTTTAGAA
 ATTATGGAACAGATGGCCTTACTTCAAGAAACGGCTTATGAAAGACTTTACCGATGGGCTCAAAGTGAAT
 GCAGAACATTGACACAAGAATCATGTGACGTATCTCCAGTATTGACACAGGCAATGGAAGCCCTGCAGGA
 CAGACCTGCTTATATAAATATACCTTAGATGAATTTGGAACAGCCAGAAGAAGTACAGTTGTTCTGTTGGA
 TTTATTGATGCGCTCACAAAGAGGGGGCCCGGAGGTACACCTAGACCAATTGAAATGCATTCTCATGACC
 CTTTGAGGTATGTAGGAGATATGTTGGCTGGCTCCATCAAGCTACTGCTTCTGAAAAGGAACACCTTGA
 AGCTCTCTAAAGCATGTAACACAAAGGTGTTGAAGAAAATATTCAAGAAGTGTGGGCATATCACT
 GAAGGTGTGTGCAGGCCCTAAAGGTTTCAAGTTGAGCAAGTAATAGTTGCTGAACCTGGGCAGTTTTAT
 TATATAAAATTTCTAATCTCCTCAAATTTATCACCATAACAATCAGTGGTATTGTTGAAAATAGTGCAAC
 TGCATTATTGACTACCATTGAAGAAATGCATTTGCTAAGCAAAAAAATATTCTTCAATAGCTTGAGTCTT
 CATGCAAGTAAATTAATGGACAAGGTTGAACTCCACACCTGATCTTGACCAAGTTCTGCACTAAATC
 AGACACTCATGTTGCTGCGTGAAGTTTTAGCATCTCACGATTCTTTCAGTTGTACCATTAGATGCTCGTCA
 AGCTGATTTTGTGAGGTTTTATCATGTGCTTGGATCCTCTCTACAGATGTGTACTGTATCAGCCAGC
 AATTTAGGCACAGCTGACATGGCCACTTTCATGGTCAATTCATATATGATGAAGACAACATTAGCTC
 TATTTGAATTCAGTACAGAGCTCTGAAATGCTACAGTTTCAGATCGAAGCACATTTGGACACACTTAT
 AAATGAGCAAGCCTTTATGTTTTAACTAGGGTAGGCTTGAGTTACATCTATAACACTGTACAGCAACAT
 AAACCTGAACAGGCTCTTTAGCTAATATGCCCAACCTAGATTCTGTGACTGAAGGCTGCAATGGTTC
 AGTTTGATCGTTATCTGTGAGCCCGAGACAACCTATTGATACCACAGCTGAACTTCTTCTAAGTGCCAC
 AGTGAAGCGTCCACCAACGGCCCA

ACGCGTACGCGGCCGCTCGAG – GFP Tag – GTTTAA

Protein Sequence:

>RG226693 representing NM_001145079
 Red=Cloning site Green=Tags(s)

MAEGSGEVVAVSATGAANGLNNGAGGTSATTCNPLSRKHLKILETRLDNDKEMLEALKALSTFFVENSRL
 TRRNLRGDIERKSLAINEEFVSIKFEVKEELESISEDVQAMSNCQDMTSRLQAAKEQTQDLIVKTKLQ
 SESQKLEIRAQVADAFLSKFQLTSDMSLLRGTREGPITEDFFKALGRVKQIHNDVKVLLRTNQQTAGLE
 IMEQMALLQETAYERLYRWAQSECRTLTQESCDVSPVLQAMEALQDRPVLYKYTLDEFGTARRSTVVRG
 FIDALTRGGPGGTPRPIEMHSHDPLRYVGDMLAWLHQATASEKEHLEALLKHVTTQGVENIQEVVGHIT
 EGVCRPLKVRIEQVIVAEPGAVLLYKISNLLKFYHHTISGIVGNSATALLTIEEMHLLSKKIFFNSLSL
 HASKLMDKVELPPDLGPSSALNQTLMLLREVLASHDSSVPLDARQADFVQVLSVLDPLLQMCVTSAS
 NLGTADMATFMVNSLYMMKTTLALFEFTDRRLEMLQFQIEAHLDTLINEQASYVLTRVGLSYIYNTVQQH
 KPEQGLSANMPNLDVSTLKAAMVQFDRYLSAPDNLLIPQLNLLSATVKRPPNGP

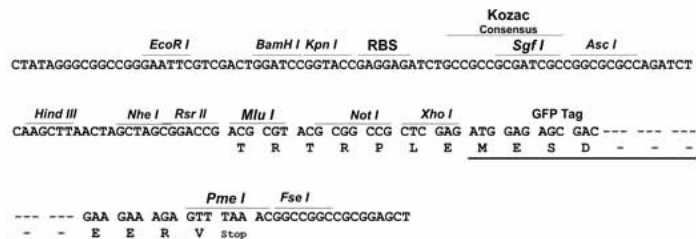
TRTRPLE – GFP Tag – V

Restriction Sites:

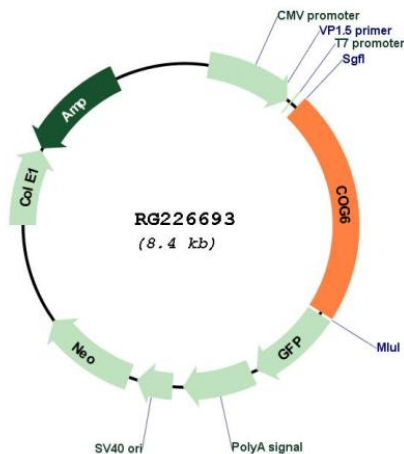
Sgfl-MluI

Cloning Scheme:

Cloning sites used for ORF Shutting:



Plasmid Map:



ACCN: NM_001145079

ORF Size: 1845 bp

| | |
|-------------------------------|---|
| OTI Disclaimer: | The molecular sequence of this clone aligns with the gene accession number as a point of reference only. However, individual transcript sequences of the same gene can differ through naturally occurring variations (e.g. polymorphisms), each with its own valid existence. This clone is substantially in agreement with the reference, but a complete review of all prevailing variants is recommended prior to use. More info |
| OTI Annotation: | This clone was engineered to express the complete ORF with an expression tag. Expression varies depending on the nature of the gene. |
| Components: | The ORF clone is ion-exchange column purified and shipped in a 2D barcoded Matrix tube containing 10ug of transfection-ready, dried plasmid DNA (reconstitute with 100 ul of water). |
| Reconstitution Method: | <ol style="list-style-type: none">1. Centrifuge at 5,000xg for 5min.2. Carefully open the tube and add 100ul of sterile water to dissolve the DNA.3. Close the tube and incubate for 10 minutes at room temperature.4. Briefly vortex the tube and then do a quick spin (less than 5000xg) to concentrate the liquid at the bottom.5. Store the suspended plasmid at -20°C. The DNA is stable for at least one year from date of shipping when stored at -20°C. |
| RefSeq: | NM_001145079.2 |
| RefSeq Size: | 5257 bp |
| RefSeq ORF: | 1848 bp |
| Locus ID: | 57511 |
| UniProt ID: | Q9Y2V7 |
| Cytogenetics: | 13q14.11 |
| Gene Summary: | This gene encodes a subunit of the conserved oligomeric Golgi complex that is required for maintaining normal structure and activity of the Golgi apparatus. The encoded protein is organized with conserved oligomeric Golgi complex components 5, 7 and 8 into a sub-complex referred to as lobe B. Alternative splicing results in multiple transcript variants. [provided by RefSeq, Feb 2009] |