

Product datasheet for **RG226691**

NCOA4 (NM_001145262) Human Tagged ORF Clone

Product data:

Product Type:	Expression Plasmids
Product Name:	NCOA4 (NM_001145262) Human Tagged ORF Clone
Tag:	TurboGFP
Symbol:	NCOA4
Synonyms:	ARA70; ELE1; PTC3; RFG
Mammalian Cell Selection:	Neomycin
Vector:	pCMV6-AC-GFP (PS100010)
E. coli Selection:	Ampicillin (100 ug/mL)



[View online »](#)

ORF Nucleotide Sequence:

>RG226691 representing NM_001145262
 Red=Cloning site Blue=ORF Green=Tags(s)

TTTTGTAATACGACTCACTATAGGGCGGCCGGGAATTCGTCGACTGGATCCGGTACCGAGGAGATCTGCC
 GCC**CGATCGCC**

ATGAATACCTTCCAAGACCAGAGTGGCAGCTCCAGTAATAGAGAACCCTTTTGAGTGTAGTGATGCAC
 GGAGGGACTTGGAGCTTGTCTATTGGTGGAGTCTCCGGGCTGAACAGCAAATTAAGATAACTTGGCAGA
 GGTCAAAGCTCAGATTCACAGTTGCATAAGCCGTCACCTGGAATGTCTTAGAAGCCGTGAGGTATGGCTG
 TATGAACAGGTGGACCTATTTATCAGCTTAAAGAGGAGACACTCAACAGCAGGCTCAGCAGCTCTACT
 CGTTATTGGGCCAGTTCAATTGTCTTACTCATCAACTGGAGTGTACCCAAAACAAAGATCTAGCCAAATCA
 AGTCTCTGTGTGCTGGAGAGACTGGGCAGTTGACCCTTAAGCCTGAAGATTCAACTGTCCTGCTCTTT
 GAAGCTGACACAATTACTCTGCGCCAGACCATCACCACATTTGGGTCTCTAAAACCATTCAAATTCCTG
 AGCACTTGATGGCTCATGCTAGTTCAGCAAATATTGGGCCCTTCTGGAGAAGAGAGGCTGTATCTCCAT
 GCCAGAGCAGAAGTCAGCATCCGGTATTGTAGCTGCCCTTTCAGCGAATGGCTCCTTGGAAAGCAAACCT
 GCCAGTGGTTATCAAGCTCCTTACATACCCAGCACCGACCCCGAGACTGGCTTACCCAAAAGCAGACCT
 TGGAGAACAGTCAGACTTCTTCCAGAGCCTGCAATTTCTCAATAATGTCGGGGGAAACCTAAAGGGCTT
 AGAAAACCTGGCTCCTCAAGAGTGAAAAATCAAGTTATCAAAAGTGAACAGCCATTCCACTACTAGTTCT
 TTCTCCATTGAAATGGAAAAGGTTGGAGATCAAGAGCTTCTGATCAAGATGAGATGGACCTATCAGATT
 GGCTAGTGACTCCCAGGAATCCCATAGCTGCGGAAGCCTGAGAATGGCAGTCGTGAAACCAGTGAGAA
 GTTTAAGCTCTTATCCAGTCTATAATGTGAATGATTGGCTTGCAAGACTGACTCCTGTACCAACTGT
 CAGGGAAAACAGCCAAAGGTGTGGAGATTGAAAACCTGGGCAATCTGAAGTGCCTGAATGACCATTGG
 AGCCAAAGAAACCATTGTCCACCCAGCATGGTTACAGAGGATTGGCTTGTCCAGAACCATCAGGACCC
 ATGTAAGGTAGAGGAGGTGTCAGAGCCAATGAGCCCTGCACAAGCTTTCAGAGTGTGTGTGATGAG
 AATTGTGAGAAGGAGGCTCTGTATAAGTGGCTTCTGAAGAAAGAAGGAAAGGATAAAAAATGGGATGCCTG
 TGGAAACCAAACCTGAGCCTGAGAAGCATAAAGATTCCCTGAATATGTGGCTCTGTCTAGAAAAGAAGT
 AATAGAACAACTAAAGCACAAAGGCAATGACTCCTTCTAGAATTGCTGATTCTTCCAAGTCATAAAG
 AACAGCCCTTGTGGAGTGGCTTATCAGGCCCCATACAAGAAGGAAGTCCCAAGGAAGTGCCTGGTA
 CTGAAGACAGAGCTGGCAAACAGAAGTTTAAAAGCCCATGAATACTTCTGGTGTCTTTAACACAGC
 TGACTGGTCTGCCAGGAAAGAAGATGGGCAACCTCAGCCAGTATCTTCTGGAGAAGACAAGTGGCTG
 CTTGAAAGAAGGCCAGGAAGTATTACTTAATCACCTCTACAGGAGGAACATAACTTCCCCCAGACC
 ATTATGGCTCCCTGCAGTTTGTGATCTTTGCCTGTATGCAGCTTAAAGTTGATAAAGAGAAGTGTT
 ATATCGAACTCCTCTACAGATG

ACGCGTACGCGGCCGCTCGAG – GFP Tag – GTTTAA

Protein Sequence:

>RG226691 representing NM_001145262
 Red=Cloning site Green=Tags(s)

MNTFQDQSGSSSNREPLLRCSDDARRDLELAIGGVLRAEQQIKDNLREVKAQIHSCISRHLECLRSREVWL
 YEQVDLIYQLKEETLQQQAQQLYSLGQFNCLTHQLECTQNKDLANQVSVCLERLGSLLKPEDSTVLLF
 EADTITLRQTITTFGLKTIQIPEHLMHASSANIGPFLEKRGCSIMPEQKSASGIVAVPFSEWLLGSKP
 ASGYQAPYIPSTDPODWLTQKQLENSQTSRRACNFFNNVGGNLKLENWLLKSEKSSYQKCNHSTTSS
 FSIEMEKVGDQELPDQDEMDLSDWL VTPQESHKLRKPENGSRETSEKFKLLFQSYNVNDWL VKTDSCNTC
 QGNQPKGVEIENLGNLKLNDHLEAKKPLSTPSMVTEDWL VQNHQDPCKVEEVCNANEPCTSF AECVCDE
 NCEKEALYKWLKKEGKDKNGMPVEPKPEPEKHKDSLNMWLCPRKEVIEQTKAPKAMTPSRIADSFQVIK
 NSPLSEWLIRPPYKEGSPKEVPGTEDRAGKQKFKSPMNTSWCSFNADWVLP GKMKMNLSQLSSGEDKWL
 LRKKAQEVLLNSPLQEEHNFPPDHYGLPAVCDLFAQMQLKVDKEKWL YRTP LQM

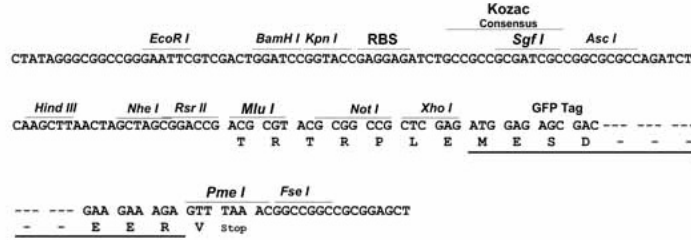
TRTRPLE – GFP Tag – V

Restriction Sites:

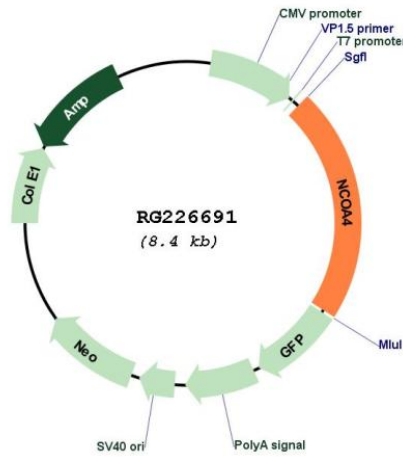
Sgfl-MluI

Cloning Scheme:

Cloning sites used for ORF Shutting:



Plasmid Map:



ACCN: NM_001145262

ORF Size: 1842 bp

OTI Disclaimer:	The molecular sequence of this clone aligns with the gene accession number as a point of reference only. However, individual transcript sequences of the same gene can differ through naturally occurring variations (e.g. polymorphisms), each with its own valid existence. This clone is substantially in agreement with the reference, but a complete review of all prevailing variants is recommended prior to use. More info
OTI Annotation:	This clone was engineered to express the complete ORF with an expression tag. Expression varies depending on the nature of the gene.
Components:	The ORF clone is ion-exchange column purified and shipped in a 2D barcoded Matrix tube containing 10ug of transfection-ready, dried plasmid DNA (reconstitute with 100 ul of water).
Reconstitution Method:	<ol style="list-style-type: none">1. Centrifuge at 5,000xg for 5min.2. Carefully open the tube and add 100ul of sterile water to dissolve the DNA.3. Close the tube and incubate for 10 minutes at room temperature.4. Briefly vortex the tube and then do a quick spin (less than 5000xg) to concentrate the liquid at the bottom.5. Store the suspended plasmid at -20°C. The DNA is stable for at least one year from date of shipping when stored at -20°C.
RefSeq:	NM_001145262.1 , NP_001138734.1
RefSeq Size:	3588 bp
RefSeq ORF:	1845 bp
Locus ID:	8031
UniProt ID:	Q13772
Cytogenetics:	10q11.22
Protein Families:	Druggable Genome, Transcription Factors
Protein Pathways:	Pathways in cancer, Thyroid cancer
Gene Summary:	This gene encodes an androgen receptor coactivator. The encoded protein interacts with the androgen receptor in a ligand-dependent manner to enhance its transcriptional activity. Chromosomal translocations between this gene and the ret tyrosine kinase gene, also located on chromosome 10, have been associated with papillary thyroid carcinoma. Alternatively spliced transcript variants have been described. Pseudogenes are present on chromosomes 4, 5, 10, and 14. [provided by RefSeq, Feb 2009]